

Product datasheet for **RC216761**

RECQL5 (NM_001003716) Human Tagged ORF Clone

Product data:

Product Type: Expression Plasmids
 Product Name: RECQL5 (NM_001003716) Human Tagged ORF Clone
 Tag: Myc-DDK
 Symbol: RECQL5
 Synonyms: RECQ5
 Mammalian Cell Selection: Neomycin
 Vector: pCMV6-Entry (PS100001)
 E. coli Selection: Kanamycin (25 ug/mL)
 ORF Nucleotide Sequence: >RC216761 representing NM_001003716
 Red=Cloning site Blue=ORF Green=Tags(s)

TTTTGTAATACGACTCACTATAGGGCGCCGGGAATTCGTCGACTGGATCCGGTACCGAGGAGATCTGCC
 GCC**CGATCGCC**

ATGAGCAGCCACCATAACCACCTTTCCTTTTGACCCTGAGCGGCGAGTCCGGAGTACGCTGAAGAAGGTCT
 TTGGGTTTGACTCTTTAAAGACGCCTTTACAGGAGAGTGCACCATGGCTGTAGTAAAAGGTAACAAGGA
 CGTCTTTGTGTGCATGCCACAGGGGCAGGAAAATCCCTATGCTATCAGCTCCCTGCTCTGTTGGCCAAA
 GGCATCACCATTGTAGTCTCCTCTCATTGCTTTGATTGAGGACCAAGTGGACCACTTGCTAACCTAA
 AGGTACGAGTAAGTTCCTGAAGCTCCTGACAGGAAAGGAGGAGTCTGCTGACCTGGA
 GCGAGAAAAGCCCGAGACCAAGATTCTGTACATACCCCGAGAGATGGCAGCTTCATCCTCCTCCAGCCC
 ACCCTGAAGTCCCTGGTGTCCCGCCACCTGCTGTCTTACTTGGTGGTGGATGAAGCTCATTGTGTTTCCC
 AATGGGGGCATGACTTTTCGTCCTGACTACTTGCCTGCTGGGTGCCCTGCGCTCCCGCTGGGACATGCCCC
 TTGTGTGGCTCTGACCGCCACAGCCACCCACAGGTCCAAGAGGACGTGTTTGGCTGCCCTGCACCTGAAG
 AAACAGTTGCCATCTCAAGACTCCCTGCTTCCGGGCCAACCTCTTCTATGATGTGCAATTCAGGAAC
 TGATTTCTGATCCCTATGGGAACCTGAAGGACTTCTGCCTAAGGCTCTGGACAGGAGGCTGATAAAGG
 GTTATCTGGCTGCGGCATTGTGTACTGCAGGACTAGAGAGGCTTGTGAACAGCTGGCCATAGAGCTCAGC
 TGCAGGGGTGTGAACGCCAAGGCTTACCATGCAGGGCTGAAGGCCCTGAAAGAAGCCTGGTGCAGAACG
 ACTGGATGGAGGAGAAGTCCCTGTAATTGTTGCAACCATTAGTTTTGGGATGGGAGTGGATAAAGCCAA
 TGTGAGTTTGTGCGCCATTGGAATATTGCCAAGTCTATGGCTGGTACTACCAGGAGTCTGGCCGGCT
 GGCAGGGATGGGAAGCCTTCTGGTGCCGCTCTCTATTACTCCAGGAATGACCGGGACCAAGTCAAGCTTCC
 TGATCAGGAAGGAGTAGCAAACTCCAGGAAAAGAGAGGAAACAAGCATCTGATAAAGCCACTATCAT
 GGCCTTTGATGCCCTGGTACCTTCTGTGAAGAACTGGGG

ACGCGTACGCGGCCGCTCGAGCAGAACTCATCTCAGAAGAGGATCTGGCAGCAATGATATCCTGGATT
 ACAAGGATGACGACGATAAGGTTTAA



[View online »](#)

Protein Sequence: >RC216761 representing NM_001003716
Red=Cloning site Green=Tags(s)

MSSHHTTFPDPERRVRLTLKKVFGFDSFKTPLQESATMAVVKGNKDVFCMPTGAGKSLCYQLPALLAK
 GITIVVSPLIALIQDQVDHLLTLKVRVSSLNSKLSAQERKELLADLEREKPTKILYITPEMAASSSFQP
 TLNSLVSRHLLSYLVVDEAHCVSQWGHDFRPDYLRGALRSRLGHAPCVALTATATPQVQEDVFAALHLK
 KPVAIFKTPCFRANLFYDVQFKELISDPYGNLKDFCLKALGQEADKGLSGCGIVYCRTREACEQLAIELS
 CRGVNAKAYHAGLKASERTLVQNDWMEEKVPVIVATISFIMGVDKANVRFVAHWNIAKSMAGYYQESGRA
 GRDGKPSWCRLYYSRNDRDQVSFLIRKEVAKLQEKRGKASDKATIMAFDALVTFCEELG

TRTRPLEQKLISEEDLAANDILDYKDDDDKV

Chromatograms: https://cdn.origene.com/chromatograms/ja1305_b10.zip

Restriction Sites: SgfI-MluI

Cloning Scheme:



* The last codon before the Stop codon of the ORF

ACCN: NM_001003716

ORF Size: 1230 bp

OTI Disclaimer: The molecular sequence of this clone aligns with the gene accession number as a point of reference only. However, individual transcript sequences of the same gene can differ through naturally occurring variations (e.g. polymorphisms), each with its own valid existence. This clone is substantially in agreement with the reference, but a complete review of all prevailing variants is recommended prior to use. [More info](#)

OTI Annotation: This clone was engineered to express the complete ORF with an expression tag. Expression varies depending on the nature of the gene.

Components: The ORF clone is ion-exchange column purified and shipped in a 2D barcoded Matrix tube containing 10ug of transfection-ready, dried plasmid DNA (reconstitute with 100 ul of water).

Reconstitution Method:

1. Centrifuge at 5,000xg for 5min.
2. Carefully open the tube and add 100ul of sterile water to dissolve the DNA.
3. Close the tube and incubate for 10 minutes at room temperature.
4. Briefly vortex the tube and then do a quick spin (less than 5000xg) to concentrate the liquid at the bottom.
5. Store the suspended plasmid at -20°C. The DNA is stable for at least one year from date of shipping when stored at -20°C.

RefSeq: [NM_001003716.4](#)

RefSeq Size: 3710 bp

RefSeq ORF: 1233 bp

Locus ID: 9400

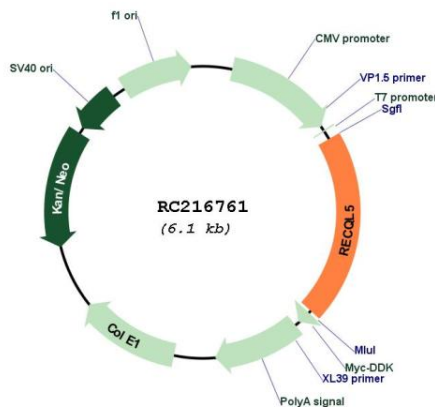
UniProt ID: [O94762](#)

Cytogenetics: 17q25.1

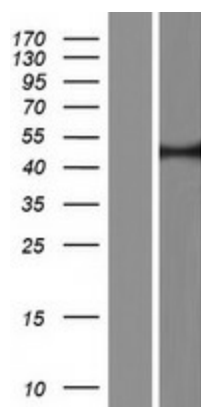
MW: 45.5 kDa

Gene Summary: The protein encoded by this gene is a helicase that is important for genome stability. The encoded protein also prevents aberrant homologous recombination by displacing RAD51 from ssDNA. Three transcript variants encoding different isoforms have been found for this gene. [provided by RefSeq, Jul 2011]

Product images:



Circular map for RC216761



Western blot validation of overexpression lysate (Cat# [LY423995]) using anti-DDK antibody (Cat# [TA50011-100]). Left: Cell lysates from untransfected HEK293T cells; Right: Cell lysates from HEK293T cells transfected with RC216761 using transfection reagent MegaTran 2.0 (Cat# [TT210002]).