

Product datasheet for RC216747

LRPPRC (NM_133259) Human Tagged ORF Clone

Product data:

Product Type:	Expression Plasmids
Product Name:	LRPPRC (NM_133259) Human Tagged ORF Clone
Tag:	Myc-DDK
Symbol:	LRPPRC
Synonyms:	CLONE-23970; GP130; LRP130; LSFC; MC4DN5
Mammalian Cell Selection:	Neomycin
Vector:	pCMV6-Entry (PS100001)
E. coli Selection:	Kanamycin (25 ug/mL)
ORF Nucleotide Sequence:	>RC216747 representing NM_133259 Red=Cloning site Blue=ORF Green=Tags(s)

TTTTGTAATACGACTCACTATAGGGCGGCCGGAATTCGTCGACTGGATCCGGTACCGAGGAGATCTGCC
GCC**CGATCGCC**

ATGGCAGCCCTGCTGAGATCCGCGGTTGGTTGCTGCGTGCCGGGGCGGCCCGCGCCTCCCGCTCTCCC
TGCGCCTCCTCCCTGGCGGCCGGGCGGCTGCATGCCGCTCCTATCTGCCCGCGCTCGCGCCGGGCC
CGTGGCCGGAGGACTACTGAGCCAGCCAGGCTGTATGCCATTGCTGCCAAAGAAAAGATATCAAGAG
GAGTCCACTTTTTCTTCTAGGAAGATTTCCAATCAGTTTGATTGGGCTCTAATGAGACTAGATCTTTCTG
TTCGAAGAAGTGGCCGATTCCAAAGAAGCTTCTACAAAAGTTTTTAATGATACCTGCCGCTCAGGTGG
CCTAGGTGGTAGTCATGCCTTGCTTCTACTACGTAGTTGTGGTTCTCTTGCCTGAACTAAAGCTTGAA
GAGAGAACAGAATTTGCTCATAGGATATGGGACACACTTCAGAAAATTAGGTGCTGTGTATGATGTGAGTC
ACTATAATGCTTTACTTAAAGTCTATCTTCAAAATGAATATAAATTTCTCACCAACTGATTTCTGGCAAA
AATGGAGGAAGCAAACATTCAACCAATTCGAGTGACATACCAGAGATTGATTGCTTCTTATTGTAATGTA
GGAGATATTGAAGGTGCCAGCAAGATTCTGGATTTATGAAAATAAGGATCTCCAGTTACAGAGGCAG
TATTCAGTGCCCTTGTGACAGGGCATGCCAGAGCTGGTGATATGGAGAATGCAGAAAACATTCTCACAGT
GATGAGAGATGCCGGAATTGAGCCTGGTCCAGACACATACCTCGCATTATTGAATGCATATGCTGAGAAG
GGCGCATTGACCATGTTAAGCAGACTCTGGAGAAGGTGGAGAAGTCCGAGCTTACCTTATGGACCGTG
ATTTACTGCAAAATTTTTAGCTTCAGTAAAGCTGGGTATCCTCAGTATGTCTCAGAAAATTTGGAAAA
AGTTACATGTGAAAGAAGATATATTCCAGATGCAATGAACCTCATTCTTTACTTTTAGTCACTGAAAAATTG
GAAGATGTAGCGTTGCAATTTTACTAGCATGCCCGTATCAAAGGAAGATGGCCCAAGTGTCTTTGGCA
GTTTCTTTTACAACACTGTGTGACTATGAATACGCCTGTGGAGAAGCTAACAGACTACTGTAAGAAGTT
AAAGGAAGTCCAGATGCACTCCTTCTCTGCAGTTCACCCTCCATTGTGCTTTACTCGCCAATAAACT
GATTTGGCAAAAGCCTTAATGAAGGCTGTGAAGGAGGAAGTTTTCTATCAGACCTCACTATTTCTGGC
CATTGCTAGTTGGACGTCCGAAGGAAAAAATGTTCAAGGTATAATTGAAATCCTCAAAGGAATGCAAGA
ATTGGGAGTACATCCTGATCAGGAAACATATACAGATTATGTGATTCCATGCTTTGATAGTAACTCA



[View online »](#)

GCACGAGCCATTTTCAGGAAAAATGGATGTCTGTCTGATAGTGATATGTTTTCTCAAGCTGGATTGAGAA
GTGAAGCAGCAAAATGGAACTTAGACTTTGTATTATCATTTTTGAAATCAAATACATTGCCCATCTCGCT
GCAGTCTATAAGAAGTAGCCTACTGCTAGGCTTCAGGAGGTCTATGAATATAAATCTTTGGAGCGAGATA
ACAGAATTGTTGTACAAGGATGGACGTTATTGCCAGGAGCCTCGAGGACCGACGGAAGCTGTTGGCTATT
TTCTTTATAAATTGATTGACAGCATGAGTACTCAGAAGTACAGGCCAAGGAGGACATTTGAGACAATA
CTTCCATCAGCTGGAGAAGATGAATGTAATAATTCCTGAAAATATCTACAGAGGCATTCGTAATCTCCTG
GAAAGCTACCATGTTCCCTGAATTGATTAAGGATGCTCACTTGTGGTTGAGAGTAAGAATTTAGATTTTC
AAAAAAGCTGTGCAACTTACATCATCTGAATTGGAGTCCACACTTGAACACTAAAAGCTGAAAATCAACC
TATAAGAGATGTCCTAAAGCAACTCATATTAGTGCTTTGTTTCAGAAGAGAATATGCAAAAAGCCCTTGAA
TTGAAAGCAAAATATGAATCCGACATGGTTACTGGTGGCTATGCAGCTTTAATAAATTTATGCTGTCGAC
ATGATAAAGTAGAAGATGCCTTGAACCTGAAAGAAGAATTTGACCCTTAGATTCATCTGCTGTCCTTGA
CACCGCAAGTATGTAGGCTTGAAGAGTATTGGCAAAGCATGGCAAGCTCCAAGATGCTATTAACATT
CTGAAGGAGATGAAAGAGAAGGATGTTCTTATCAAAGATACAACAGCCTTGCCTTTTTCCACATGCTAA
ATGGCGCAGCTTAAAGAGGTGAAATTGAAACAGTAAAACAGTTGCATGAAGCCATCGTGACTCTAGGGT
AGCAGAACCATCCACCAACATAAGTTTCCATTGGTCACTGTACACTTGGAAAAGGGCGACCTATCTACT
GCTCTTAGGTCGCCATTGACTGCTATGAAAAGTATAAAGTATTACCAAGGATTCATGATGCTTTGTGTA
AACTGGTAGAGAAAGGCGAGACTGATCTAATTCAGAAAAGCAATGGACTTTGTGAGCCAAGAACAAGTGA
AATGGTGTGCTCTATGATCTCTTCTTTGCCTTCTACAAACAGGAAATTACAAAGAGGCCAAGAAGATC
ATTGAGACTCCAGGGATTAGAGCTCGATCTGCAAGGCTTCAGTGGTTTTGTGACAGATGTGTTGCAATA
ATCAGGTTGAAACTCTGGAAAAATTAGTGGAGCTGACACAGAAGCTATTTGAATGTGATAGAGACCAGAT
GTACTACAATCTGCTAAAAGTATAAAAATAACGGTACTGGCAAAGAGCTGATGCAGTCTGGAATAAA
ATCCAAGAAGAAAATGTTATTCCTCGTAAAAGACATTAAGATTATTAGCAGAAATCCTTAGAGAGGGTA
ACCAGGAAGTCCGTTTACGTACCTGAGTTGTGGTATGAAGATGAAAAACATTCCTGAATTCCTGTC
AGCCTCAACCACAGAACCTGATTTCCAGAAAGATATATTGATTGCCTGCCGATTGAACCAAAAAAAGGG
GCATATGATATTTTCTGAATGCAAAAGAGCAAAACATTGTGTTAATGCTGAAACCTACAGCAATCTCA
TTAAATTAAGTGTGAGAAAGTATTTTACACAAGCAATGGAAGTGAAGCATTGCGGAGACCCACAT
CAAGGGCTTCACACTGAACGATGCTGCCAACAGCCGCTCATATAACGCAAGTTAGGCGGGATTATTTG
AAAGAGGCTGTGACAACACTGAAAACAGTATTGGATCAGCAGCAGACCCCTTCTAGGTTAGCAGTGACCC
GTGTCATCCAGGCATTGGCCATGAAGGGTGTGTTGAAAACATAGAAGTAGTTGAGAAGATGTTAAATGG
ACTCGAAGACTCCATTGGACTTTCAAAAATGGTTTTTCATCAATAACATTGCTTTGGCTCAAATAAAGAT
AATAACATAGATGCCGAATAGAAAACATTGAAAATATGCTTACTTCAGAGAATAAAGTCATTGAACCCC
AATACTTCGGCTTGGCATACTTATTCAGAAAAGTAAATAGAGGAGCAGTTGGAACAGCAGTTGAAAAGAT
AAGCATCATGGCGGAGAGATTGGCCAATCAGTTTGCAATTTATAAACCTGTCACTGATTTTTTCTTCAA
CTTGTTGATGCAGGCAAGGTGGATGATGCCAGAGCTCTCTACAGAGATGTGGTGAATTTGCTGAACAAA
CCCCGATTTTGTGTTGTTTCTCCTTAGGAATTCAGGAAACAAGGAAAGGCATCAACTGTGAAATCTGT
GTTAGAATTGATTCCTGAATTAATGAAAAGGAAGAAGCATACAATTCCTCATGAAAAGCTATGTCTCA
GAGAAAGATGTCACATCTGCTAAAGCACTGTATGAACATTTGACTGCAAAGAATACAAAATTTGGATGATC
TGTTTCTAAAGCGTTACGCATCTTTGCTGAAGTATGCTGGAGAGCCTGTCCCTTTTATTGAACCCCTGA
AAGCTTTGAATTTATGCACAGCAGCTAAGAAAATGAGGGAAAACCTTCT

ACGCGTACGCGGCCGCTCGAGCAGAACTCATCTCAGAAGAGGATCTGGCAGCAATGATATCCTGGATT
ACAAGGATGACGACGATAAGGTTTAA

Protein Sequence: >RC216747 representing NM_133259
 Red=Cloning site Green=Tags(s)

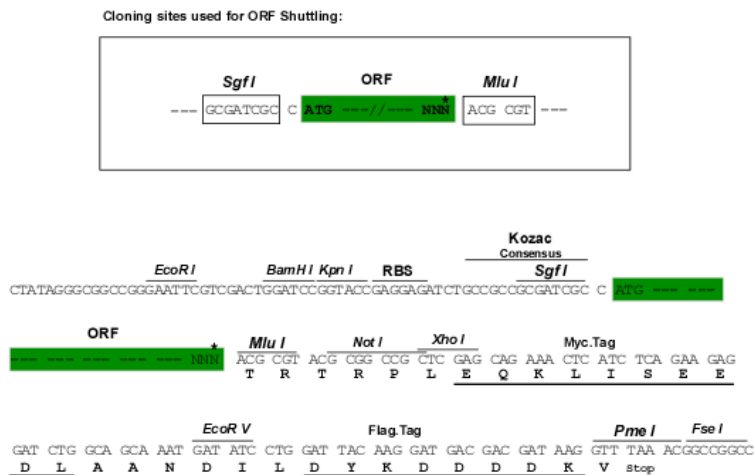
MAALLRSARWLLRAGAAPRLPLSLRLLPGGPGRLHAASYLPAARAGPVAGLLSPARLYAIAAKEKDIQE
 ESTFSSRKISNQFDWALMRLDLVSRRTGRIPKLLQKVFNDTCRSGGLGGSHALLLRSCGSLPELKLE
 ERTEFAHRIWDTLQKLGAVYDVSHYNALLKVYLQNEYKFSPTDFLAKMEEANIQPNRVTYQRLIASYCNV
 GDIEGASKILGFMKTKDLPVTEAVFSALVTGHARAGDMENAENILTVMRDAGIEPDPDYLALLNAYA EK
 GDIDHVQKTLKVEKSELHLMRDLLQIIFSFSKAGYPQYVSEILEKVT CERRYIPDAMNLI LLLVTEKL
 EDVALQILLACPVSKEDGPSVFGSFFLQHCVTMNTPEKLT DYCKKLKEVQMHSFPLQFTLHCALLANKT
 DLAKALMKAVKEEGFPIRPHYFWPLLVGRRKEKNVQGIIEILKGMQELGVHPDQET YTDYVIPC FDSVNS
 ARAILQENGLSDSDFMSQAGLRSEAANGNDFVL SFLKSNTLPISLQSI RSSL L LFRRSMNINLWSEI
 TELL YK DGRY CQEP RGPTEAVGYFLYNLIDSMSDSEVQAKEEHLRQYFHQLEKMNVKIPENIYRGIRNLL
 ESYHVP ELIKDAHLLVESKNLDFQKTVQLTSSELESTLETLKAENQPI RDVLKQLILVLCSEENMQKALE
 LKAKYESDMVTGGYAALINLCCRHDKVEDALNLKEEFDRLDSSAVLDTGKYVGLVRVLAKHGK LQDAINI
 LKEMKEKDVLIKDTTAL SFFHMLNGAALRGEIETVKQLHEAIVTLGLAEPSTNISFPLVTVHLEKGD LST
 ALEVAIDCYEKYKVLPRIHVLCCKLVEKGETDLIQKAMDFVSQEQGEMVMLYDLFFAFLQTGN YKAEAKKI
 IETPGIRARSARLQWFCDRCVANNQVETLEKVELTQKLFECDRDQMYNLLKLYKINGDWQRADAVWNK
 IQEENVIPREKTLRLAEILREGNQEVFPDVP ELYEDEKHS LNSSSASTTEPDFQKDIL IACRLNQKKG
 AYDIFLNAKEQNI VFNAETYSNLIKLLMSEDYFTQAMEVKAF AETHIKGFTL NDAANSRLIITQVRRDYL
 KEAVTTLKT VLDQQTPSRLAVTRVIQALAMKGDVENIEVVQKMLNGLED S IGLSKMVF INNIALAQIKN
 NNIDAAIENIENMLTSENKVI EPQYFGLAYLFRKVI EEQLEPAVEKISIMAE RLANQFAIYKPVTDFFLQ
 LVDAGKVDDARALLQRCGAIAEQTPILL LFLLRNSRKQ GKASTVKS VLELIPELNEKEEAYNSLMKSYVS
 EKDVTSAKALYEHLTAKNTKLDLFLKRYASLLKYAGEPVPFIEPPESFEFYAQLRKLRENS

TRTRPLEQKLISEEDLAANDILDYKDDDDKV

Chromatograms: https://cdn.origene.com/chromatograms/mk6263_b03.zip

Restriction Sites: SgfI-MluI

Cloning Scheme:



* The last codon before the Stop codon of the ORF

ACCN: NM_133259

ORF Size: 4182 bp

OTI Disclaimer: Due to the inherent nature of this plasmid, standard methods to replicate additional amounts of DNA in E. coli are highly likely to result in mutations and/or rearrangements. Therefore, OriGene does not guarantee the capability to replicate this plasmid DNA. Additional amounts of DNA can be purchased from OriGene with batch-specific, full-sequence verification at a reduced cost. Please contact our customer care team at custsupport@origene.com or by calling 301.340.3188 option 3 for pricing and delivery.

The molecular sequence of this clone aligns with the gene accession number as a point of reference only. However, individual transcript sequences of the same gene can differ through naturally occurring variations (e.g. polymorphisms), each with its own valid existence. This clone is substantially in agreement with the reference, but a complete review of all prevailing variants is recommended prior to use. [More info](#)

OTI Annotation: This clone was engineered to express the complete ORF with an expression tag. Expression varies depending on the nature of the gene.

Components: The ORF clone is ion-exchange column purified and shipped in a 2D barcoded Matrix tube containing 10ug of transfection-ready, dried plasmid DNA (reconstitute with 100 ul of water).

Reconstitution Method:

1. Centrifuge at 5,000xg for 5min.
2. Carefully open the tube and add 100ul of sterile water to dissolve the DNA.
3. Close the tube and incubate for 10 minutes at room temperature.
4. Briefly vortex the tube and then do a quick spin (less than 5000xg) to concentrate the liquid at the bottom.
5. Store the suspended plasmid at -20°C. The DNA is stable for at least one year from date of shipping when stored at -20°C.

RefSeq: [NM_133259.2](#), [NP_573566.2](#)

RefSeq Size: 5095 bp

RefSeq ORF: 4185 bp

Locus ID: 10128

UniProt ID: [P42704](#)

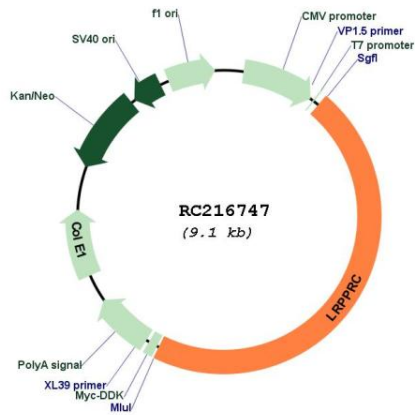
Cytogenetics: 2p21

Domains: PPR

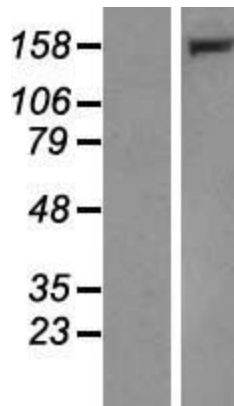
MW: 157.7 kDa

Gene Summary: This gene encodes a leucine-rich protein that has multiple pentatricopeptide repeats (PPR). The precise role of this protein is unknown but studies suggest it may play a role in cytoskeletal organization, vesicular transport, or in transcriptional regulation of both nuclear and mitochondrial genes. The protein localizes primarily to mitochondria and is predicted to have an N-terminal mitochondrial targeting sequence. Mutations in this gene are associated with the French-Canadian type of Leigh syndrome. [provided by RefSeq, Mar 2012]

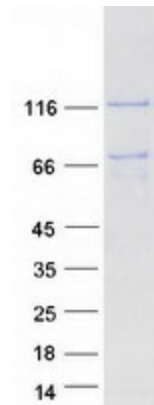
Product images:



Circular map for RC216747



Western blot validation of overexpression lysate (Cat# [LY408850]) using anti-DDK antibody (Cat# [TA50011-100]). Left: Cell lysates from untransfected HEK293T cells; Right: Cell lysates from HEK293T cells transfected with RC216747 using transfection reagent MegaTran 2.0 (Cat# [TT210002]).



Coomassie blue staining of purified LRPPRC protein (Cat# [TP316747]). The protein was produced from HEK293T cells transfected with LRPPRC cDNA clone (Cat# RC216747) using MegaTran 2.0 (Cat# [TT210002]).