

## Product datasheet for RC216745

### WDHD1 (NM\_007086) Human Tagged ORF Clone

#### Product data:

Product Type:	Expression Plasmids
Product Name:	WDHD1 (NM_007086) Human Tagged ORF Clone
Tag:	Myc-DDK
Symbol:	WDHD1
Synonyms:	AND-1; AND1; CHTF4; CTF4
Mammalian Cell Selection:	Neomycin
Vector:	pCMV6-Entry (PS100001)
E. coli Selection:	Kanamycin (25 ug/mL)
ORF Nucleotide Sequence:	>RC216745 representing NM_007086 Red=Cloning site Blue=ORF Green=Tags(s)

TTTTGTAATACGACTCACTATAGGGCGGCCGGAATTCGTCGACTGGATCCGGTACCGAGGAGATCTGCC  
GCCCGATCGCC

ATGCTGCCACACGGAAGCCAATGAGATATGGGCATACAGAGGGACACACGGAGGTCTGTTTTGATGATT  
CTGGGAGTTTTATTGTGACTTGTGGAAGTGATGGTGATGTGAGGATTTGGGAAGACTTGGATGATGATGA  
TCCTAAGTTCATTAATGTTGGAGAAAAGGCATATTCATGTGCTTTGAAGAGTGGAAAACCTGGTCACTGCA  
GTTTCTAATAACTATTCAAGTCCACACATTTCTGAAGGAGTCCAGATGGTATATTGACTCGCTTCA  
CTACAAATGCAAACCATGTGGTCTTTAATGGGGATGGTACTAAAATTGCTGCTGGATCTAGTGATTTTCT  
AGTCAAAATTGTGGATGTGATGGATAGCAGCCAACAGAAAACATTTTCGAGGACATGATGCCCTGTTTTA  
AGTCTTTCTTTGATCCTAAGGACATCTTTCTGGCATCAGCTAGTTGTGATGGATCTGTCAGAGTGTGGC  
AAATTTGAGATCAGACATGTGCTATTAGTTGGCCACTGCTACAAAAATGCAACGATGTGATAAATGCAAA  
ATCAATCTGCAGACTTGCTTGGCAGCAAAAAGTGGGAAGTTACTGGCAATTCCTGTGAAAAAATCTGTT  
AAGCTATATAGAAGAGAATCTTGAGTCATCAATTTGATCTTTCAGATAATTTCACTCTCAGACCTCA  
ATATAGTAACCTGGTCTCCCTGTGGCAATATTTAGCTGCAGGTAGTATTAATGGTCTAATCATAGTTTG  
GAATGTGGAACCAAGACTGCATGAAAGGGTGAACATGAGAAAGGTTATGCAATTTGTGGTCTGGCA  
TGGCATCTACTTGTGGTCAATATCGTATACTGATGCGGAAGGAAATCTAGGGCTCTAGAGAATGTT  
GTGACCCAGTGGAAAGACATCAAGCAGTAAGGTATCTAGCAGAGTGGAAAAGGATTATAATGATCTTTT  
TGATGGAGATGATATGAGTAATGCTGGTATTTCTAAATGACAATGCAGTTGAGATCCCTTCTTTTTCA  
AAAGGGATTATAAATGATGATGAGGATGATGAAGACCTCATGATGGCTTCAGGTCGCTCCTAGACAGCGAA  
GTCACATCCTAGAAGATGATGAAAACCTCAGTTGATATTTCAATGCTAAAAACTGGTTCTAGTCTTCTCAA  
AGAGGAGGAGGAAGATGGTCAAGAAGGCAGCATTACAATCTACCACTTGAACATCCCAAAGGCCATTT  
TATGATGGACCCATGCCAACTCCCGGCAAAAGCCATTTCAAGTCAAGTTCTACACCGTTGCATCTCACTC  
ACAGATTCATGGTGTGAACTCTATTGGAATTATTCGCTGCTATAATGATGAGCAAGACAATGCCATAGA  
TGTGGAGTCCATGATACCTCCATACACCATGCAACACACTTATCAAACACTTTGAATTACAATAGCA



GATCTTTCCACGAAGCTATTTTGTGGCATGTGAAAGCACTGATGAACTAGCAAGCAAGCTTCACTGCC  
TGCACTTAGTTCTTGGGATTCAAGCAAAGAGTGGATAATAGACTTGCCTCAGAATGAGGATATTGAAGC  
CATATGTCTCGGTCAAGGATGGGCTGCTGCCGCTACTAGTGCCCTGCTTCTTCGATTGTTTACTATTGGA  
GGGGTTCAAAAAGAGGTATTCAGCCTTGTGGACCTGTGGTGTCAATGGCAGGACATGGAGAACAGCTTT  
TCATTGTTATCACAGAGGTACAGGATTTGATGGGGATCAGTGCCTTGGAGTTCAACTGCTAGAGCTGG  
GAAAAAGAAAAACAAATTTTGCATGGTGACCTCTTCTCTTACAAGGAAATCCTACCTTGCATGGATT  
GGGTTTTAGCTGAAGTACCCCTTGTACGTGGATTGAGAAGGAAATGTTTCAATGCTTAAACAGAGGAC  
TTGGTAATACGTGGACTCCTATATGTAATACAAGAGAGCACTGCAAAGGAAAAATCTGATCACTACTGGGT  
GGTTGGTATCCATGAAAAATCCCCAGCAACTAAGGTGCATTCTTGTAAAGGTTCTCGGTTTCCCCAACCC  
CTTCCAGCCCTGCTGTTGCTATATTATCCTTTAAGCTTCTTACTGTCAGATTGCAACAGAGAAAAGGAC  
AAATGGAGGAGCAATTTTGGCGTTCAGTTATATTTACAACACCTTGATTATTTAGCTAAAAATGGTTA  
TGAATATGAAGAGAGCACTAAAAATCAAGCAACAAAAGAGCAACAGGAACTTTTAATGAAAAATGCTTGC  
CTTTCTGTAAACTGGAGCGAGAATCCGTTGTGTGGAACCTGCTGATCTAATGACTCAAAATGCTGTGA  
ATTTAGCCATTAATATGCTTCTCGCTCTCGGAAATTAATACTGGCTCAAAAATAAGTGAAGTGGCTGT  
AGAGAAGCGAGCCGAATTGACAGCAACCCAGGTGGAAGAGGAAGAAGAAGAAGATTTTCAAAAAAG  
CTGAATGCTGGTTACAGCAATACTGCTACAGAGTGGAGCCAACCAAGGTTCAAGAAATCAAGTTGAAGAAG  
ATGCTGAGGACAGTGGAGAAGCTGATGATGAAGAAAAACAGAAATACATAAGCCTGGACAGAACTCGTT  
TTCCAAAAGTACAAATCCTCTGATGTTTCAAGTCAAGTGCAGTTACCTTTAGCAGCCAAGGACGA  
GTAATCCCTTTAAGGTATCAGCCAGTTCAAAAGAACCAGCCATGCAATGAATTCAGCAGTTCAACTA  
ATATTTTAGACAATATGGGCAATCATCCAAGAAATCCACTGCACTTAGTCGAACTACAAATAATGAAAA  
GTCTCCCATATAAAGCCTCTGATTCCAAGCCGAAAGCCTAAGCAGGCATCTGCAGCATCCTATTTCCAG  
AAAAGAAATCTCAAACTAATAAAACTGAGGAAGTAAAAGAAAGAAATCTTAAAAATGTATTATCTGAAA  
CCCCAGCTATATGCTCCTCCTCAAAACACTGAAAACCAAGGCCAAAGACCGGGTTCCAGATGTGGTTAGA  
AGAAAATAGAAGTAATATTTTGTCTGACAATCCTGACTTTTTCAGATGAAGCAGACATAATAAAGAAAGGA  
ATGATTGATTTAGAGTATTGTCAACTGAAGAAAAGAAAGGTGTGGGCTAACAAAGCCAAAGGAGAAACGG  
CAAGTGAAGGAACTGAAGCAAAGAAGCGAAAACGTGTGGTTGATGAAAGTATGAAACAGAAAACAGGA  
AGAAAAGCAAAGAGAACCTGAATTTGTCTAAAAAGCAGAAACCTTTAGATTTTCTACAAATCAGAAA  
CTATCAGCTTTTGCATTTAAGCAGGAG

ACGCGTACGCGGCCGCTCGAGCAGAACTCATCTCAGAAGAGGATCTGGCAGCAATGATATCCTGGATT  
ACAAGGATGACGACGATAAGGTTTAA



**OTI Disclaimer:** Due to the inherent nature of this plasmid, standard methods to replicate additional amounts of DNA in *E. coli* are highly likely to result in mutations and/or rearrangements. Therefore, OriGene does not guarantee the capability to replicate this plasmid DNA. Additional amounts of DNA can be purchased from OriGene with batch-specific, full-sequence verification at a reduced cost. Please contact our customer care team at [custsupport@origene.com](mailto:custsupport@origene.com) or by calling 301.340.3188 option 3 for pricing and delivery.

The molecular sequence of this clone aligns with the gene accession number as a point of reference only. However, individual transcript sequences of the same gene can differ through naturally occurring variations (e.g. polymorphisms), each with its own valid existence. This clone is substantially in agreement with the reference, but a complete review of all prevailing variants is recommended prior to use. [More info](#)

**OTI Annotation:** This clone was engineered to express the complete ORF with an expression tag. Expression varies depending on the nature of the gene.

**Components:** The ORF clone is ion-exchange column purified and shipped in a 2D barcoded Matrix tube containing 10ug of transfection-ready, dried plasmid DNA (reconstitute with 100 ul of water).

**Reconstitution Method:**

1. Centrifuge at 5,000xg for 5min.
2. Carefully open the tube and add 100ul of sterile water to dissolve the DNA.
3. Close the tube and incubate for 10 minutes at room temperature.
4. Briefly vortex the tube and then do a quick spin (less than 5000xg) to concentrate the liquid at the bottom.
5. Store the suspended plasmid at -20°C. The DNA is stable for at least one year from date of shipping when stored at -20°C.

**RefSeq:** [NM\\_007086.4](#)

**RefSeq Size:** 4734 bp

**RefSeq ORF:** 3390 bp

**Locus ID:** 11169

**UniProt ID:** [O75717](#)

**Cytogenetics:** 14q22.2-q22.3

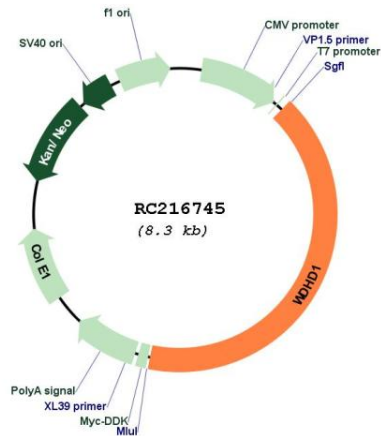
**Domains:** HMG, WD40

**Protein Families:** Druggable Genome, Transcription Factors

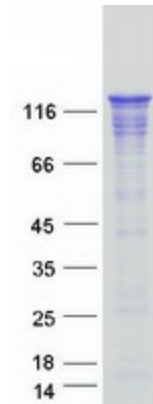
**MW:** 125.8 kDa

**Gene Summary:** The protein encoded by this gene contains multiple N-terminal WD40 domains and a C-terminal high mobility group (HMG) box. WD40 domains are found in a variety of eukaryotic proteins and may function as adaptor/regulatory modules in signal transduction, pre-mRNA processing and cytoskeleton assembly. HMG boxes are found in many eukaryotic proteins involved in chromatin assembly, transcription and replication. Alternative splicing results in two transcript variants encoding different isoforms. [provided by RefSeq, Jul 2008]

Product images:



Circular map for RC216745



Coomassie blue staining of purified WDHD1 protein (Cat# [TP316745]). The protein was produced from HEK293T cells transfected with WDHD1 cDNA clone (Cat# RC216745) using MegaTran 2.0 (Cat# [TT210002]).