

Product datasheet for **RC216743**

ASB3 (NM_016115) Human Tagged ORF Clone

Product data:

Product Type:	Expression Plasmids
Product Name:	ASB3 (NM_016115) Human Tagged ORF Clone
Tag:	Myc-DDK
Symbol:	ASB3
Synonyms:	ASB-3
Mammalian Cell Selection:	Neomycin
Vector:	pCMV6-Entry (PS100001)
E. coli Selection:	Kanamycin (25 ug/mL)



[View online »](#)

ORF Nucleotide Sequence:

>RC216743 representing NM_016115
 Red=Cloning site Blue=ORF Green=Tags(s)

TTTTGTAATACGACTCACTATAGGGCGGCCGGAATTCGTCGACTGGATCCGGTACCGAGGAGATCTGCC
 GCC**CGGATCGCC**

ATGGATTTTACAGAGGCTTACGCGGACACGTGCTCTACAGTTGGACTTGCTGCCAGGGAAGCAATGTTA
 AAGTCTTAAGGAACTGCTCAAAAAGGGCCGAAGTGTCGATGTTGCTGATAACAGGGGATGGATGCCAAT
 TCATGAAGCAGCTTATCACAACCTGTAGAATGTTTGAATGTTAATTATGCAGATTCATCTGAAAAAC
 TACATTAAGATGAAGACCTTTGAAGTTTCTGTGCTTTGCATCTCGTGCAGTCAAGGACATTGAAAA
 TCGTACAGATTCTTTAGAAGCTGGGCAGATCCTAATGCAACTACTTTAGAAGAAACGACACCATTGTT
 TTTAGCTGTTGAAAAATGGACAGATAGATGTGTTAAGGCTGTTGCTTCAACACGGAGCAAATGTTAATGGA
 TCCATTCTATGTGTGGATGGAACCTCTGCACCAGGCTCTTTTCAGGAAAATGCTGAGATCATAAAAT
 TGCTTCTTAGAAAAGGAGCAAACAAGGAATGCCAGGATGACTTTGGAATCACACCTTTATTTGTGGCTGC
 TCAGTATGGCAAGCTAGAAAAGCTTGAGCATACTTATTTTCATCGGGTGCAAATGTCAATTGTCAAGCCTTG
 GACAAAGCTACACCTTGTTCATTGCTGCTCAAGAGGGACACAAAAATGTGTGGAGCTTTTGTCTCCA
 GTGGGGCAGATCCTGATCTTTACTGTAATGAGGACAGTTGGCAGTTACCTATTCATGCAGCTGCACAAAT
 GGGCCATACAAAAATCTTGGACTTGTTAATACCACTTACTAACCGGGCCTGTGACTGGCTAAACAAA
 GTAAGCCCTGTTTACTCAGCAGTGTGGGGGACATGAAGATTGCCTAGAAAATTACTCCGGAATGGCT
 ACAGCCCAGACGCCAGCGTGCCTTGTGGATTGAGTTCTCCTGTGTGCATGGCTTTCCAAAAGGA
 CTGTGAGTTCTTTGGAATTGTGAACATCTTTGAAATATGGAGCCCAGATAAATGAACTTCATTTGGCA
 TACTGCCTGAAGTACGAGAAGTTTTCGATATTTGCTACTTTTGGAGAAAGTTGCTCATTGGGACCAT
 GGAACCATATATGAATTTGAAATCATGAATTAAGCACAAGCAAATAAAGGAGTGGTTGCCACA
 TCTTCTGTTGCTGATTTGACCACTGATCTACTGTGCAATCTTGGATTGACTCAGTCAGCATTGAC
 ACCCTTATCTTACTTTGGAGTTTACTAATTGGAAGACACTTGCACCAGCTGTTGAAAGGATGCTCTCTG
 CTCGTGCCTCAAACGCTTGGATTCTACAGCAACATATTGCCACTGTTCCATCCCTGACCCATCTTTGTCG
 TTTGAAATTCGGTCCAGTCTAAAATCAGAAGCTCTACGGTCTGACAGTTATATTAGTCAGCTGCCACTT
 CCCAGAAGCCTACATAATTATTTGCTCTATGAAGAGCTTCTGAGGATGTATGAAGTCCAGAAGTGGCAG
 CTATTCAGATGGA

ACGCGTACGCGGCCGCTCGAGCAGAAACTCATCTCAGAAGAGGATCTGGCAGCAAATGATATCCTGGATT
 ACAAGGATGACGACGATAAGGTTTAA

Protein Sequence:

>RC216743 representing NM_016115
 Red=Cloning site Green=Tags(s)

MDFTEAYADTCSTVGLAAREGNVVKLRKLLKGRSVDVADNRGWMPIHEAAYHNSVECLQMLINADSSSEN
 YIKMKTFFEGFCALHLAASQGHWKIVQILLEAGADPNATTLEETPLFLAVENGQIDVLRLLQLHGANVNG
 SHSMCGWNSLHQASFQENAEIKLLLRKGANKECQDDFGITPLFVAAQYKLESLSILISSGANVNCQAL
 DKATPLFIAAQEGHTKCVELLLSSGADPDLYCNEDSWQLPIHAAAQMGHTKILDLLIPLTNRACDTGLNK
 VSPVYSAVFGGHEDCLEILLRNGYSPDAQCLVFGFSSPVCMAFQKDCEFFGIVNILLKYGAQINELHLA
 YCLKYEKFSIFRYFLRKGCSLGPWNHIYEFVNHAIKAQAKYKEWLPHELLVAGFDPLILLCNSWIDSVSID
 TLIFTLEFTNWKTLAPAVRMLSARASNAWILQHQHIATVPSLTHLCRLEIRSSLKSERLRSDSYISQLPL
 PRSLHNYLLYEDVLRMYEVPAAIQDG

TRTRPLEQKLISEEDLAANDILDYKDDDDKV

Chromatograms:

https://cdn.origene.com/chromatograms/mk6179_a09.zip

Restriction Sites:

Sgfl-Mlul

Cloning Scheme:

Cloning sites used for ORF Shutting:



* The last codon before the Stop codon of the ORF

ACCN: NM_016115

ORF Size: 1554 bp

OTI Disclaimer: The molecular sequence of this clone aligns with the gene accession number as a point of reference only. However, individual transcript sequences of the same gene can differ through naturally occurring variations (e.g. polymorphisms), each with its own valid existence. This clone is substantially in agreement with the reference, but a complete review of all prevailing variants is recommended prior to use. [More info](#)

OTI Annotation: This clone was engineered to express the complete ORF with an expression tag. Expression varies depending on the nature of the gene.

Components: The ORF clone is ion-exchange column purified and shipped in a 2D barcoded Matrix tube containing 10ug of transfection-ready, dried plasmid DNA (reconstitute with 100 ul of water).

Reconstitution Method:

1. Centrifuge at 5,000xg for 5min.
2. Carefully open the tube and add 100ul of sterile water to dissolve the DNA.
3. Close the tube and incubate for 10 minutes at room temperature.
4. Briefly vortex the tube and then do a quick spin (less than 5000xg) to concentrate the liquid at the bottom.
5. Store the suspended plasmid at -20°C. The DNA is stable for at least one year from date of shipping when stored at -20°C.

RefSeq: [NM_016115.5](#)
RefSeq Size: 2214 bp

RefSeq ORF: 1557 bp

Locus ID: 51130

UniProt ID: [Q9Y575](#)
Cytogenetics: 2p16.2

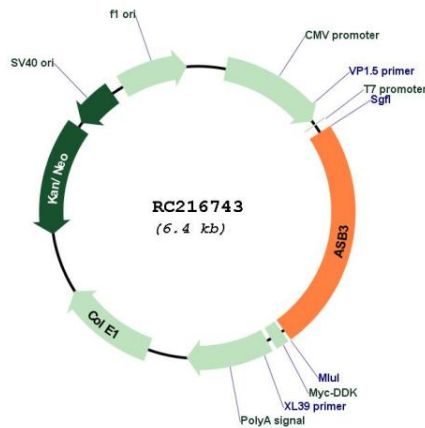
Domains: ANK

Protein Families: Druggable Genome

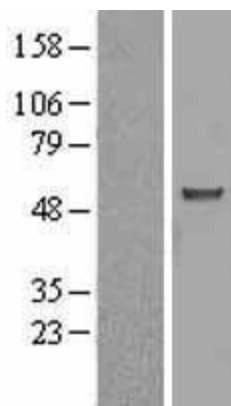
MW: 57.6 kDa

Gene Summary: The protein encoded by this gene is a member of the ankyrin repeat and SOCS box-containing (ASB) family of proteins. They contain ankyrin repeat sequence and SOCS box domain. The SOCS box serves to couple suppressor of cytokine signalling (SOCS) proteins and their binding partners with the elongin B and C complex, possibly targeting them for degradation. Alternatively spliced transcript variants have been described for this gene. [provided by RefSeq, Jan 2011]

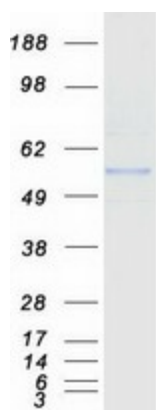
Product images:



Circular map for RC216743



Western blot validation of overexpression lysate (Cat# [LY402502]) using anti-DDK antibody (Cat# [TA50011-100]). Left: Cell lysates from untransfected HEK293T cells; Right: Cell lysates from HEK293T cells transfected with RC216743 using transfection reagent MegaTran 2.0 (Cat# [TT210002]).



Coomassie blue staining of purified ASB3 protein (Cat# [TP316743]). The protein was produced from HEK293T cells transfected with ASB3 cDNA clone (Cat# RC216743) using MegaTran 2.0 (Cat# [TT210002]).