

## Product datasheet for RC216740

### TReP132 (TRERF1) (NM\_033502) Human Tagged ORF Clone

#### Product data:

Product Type:	Expression Plasmids
Product Name:	TReP132 (TRERF1) (NM_033502) Human Tagged ORF Clone
Tag:	Myc-DDK
Symbol:	TReP132
Synonyms:	BCAR2; dj139D8.5; HSA277276; RAPA; TReP-132; TREP132
Mammalian Cell Selection:	Neomycin
Vector:	pCMV6-Entry (PS100001)
E. coli Selection:	Kanamycin (25 ug/mL)
ORF Nucleotide Sequence:	>RC216740 representing NM_033502 Red=Cloning site Blue=ORF Green=Tags(s)

TTTTGTAATACGACTCACTATAGGGCGGCCGGAATTCGTCGACTGGATCCGGTACCGAGGAGATCTGCC  
GCC**CGATCGCC**

ATGGGTGACCAGCAACTGTACAAGACCAACCATGTGGCCCATGGTAGTGAGAACCCTTTCTACCAACAGC  
CACCACCTGGCGTCCACAGCGGGCTGAACCACAACCTATGGGAATGCAGTTACAGGGGGCGGAATGGATGC  
CCCTCAGGCTCGCCAATCTCCCCCACTCCCTCAAGATACACGGGATGGTCTGGGCTTGCTGTGGC  
TCCAAAAACCTTGCCAAATGGATACCTCGAGGCAGGGAGGGTGGGAAGTCATGCAGGGCTGAAAC  
ATGTCCAGCTACGTGAAACCTGGCAACTCAAACATGATGTGGGGGCACCAGCCAGGCTGAGCCAC  
TGATGGCTACCAATACACCTACTCCAGGCCAGCGAGATCCGGACCCAGAAGCTTACCAGCGGTGTCTTA  
CACAAGCTGGACTCTTTCACCCAGGTGTTTGCCAAACAAAACCTGCGAATTCAGGTCAACAATATGGCC  
AGGTGCTGCACACTCAGTCAGCAGTGATGGATGGAGCCCTGACAGTGCTCTCCGCCAGCTGCTGTCTCA  
GAAGCCCATGGAGCCCCAGCACCGGCTATCCCTTCCCGTACCAGCAGGTGCCCCAGCAGCCTCACCT  
GGTTTCACTGGTGGGCTGTCAAACAGCTCTCAGGTGGGCAGCACCTACCAAGGGCACCTGTATT  
ATGACTACCAGCAGCCTCTGGCTCAGGTGCCAGTGCCAGGGAGGACAGCCACTGCAGGCCCCACAGATGCT  
GTCACAGCACATGCAACAGATGCAGCAGCACAGTATTACCCACCGCAGCAACAGCAGCAAGCCGGGCAA  
CAGCGTATCTCCATGCAAGAAATACAGACGCAGCCGCAACAAATTCGCCCATCACAGCCACAGCCGCGC  
CACAGCAGCAGCAGCCGACAGCTACAGCTGCAGCAGCGGAGGTTCAATGCAGATACCTCAGTATTA  
TCAGCCCCAACCCATGATGCAGCACTTGAAGAGCAGCAGCAGCAACAGATGCACCTGCAGCCTCCTTCT  
TATCACAGGGACCCTCACAGTATACCCAGAGCAGGCACACACTGTCCAGCTGATTCCTGGGCTCCA  
TGTCCCAGTACTACTACCAGGAGCCCCAGCAGCCCTACAGCCACCCCTCTACCAGCAGAGCCACCTGTC  
CCAGCACCAGCAGCGTGAGGACAGTCAGCTGAAGACCTACTCTAGTGACAGACAGGCCAGGCCATGCTG  
AGCTCCCATGGGACCTGGGCTCCTGACACAGGAATGGGAGACCCAGCGAGCTCAGATCTGACCCGGG  
TCAGCAGCACCTCCCCATCGCCCCCTCTATCCCCAGTGGGATCCACCTCAACAACATGGGGCTCA  
GCATCAGCAGCTGTCTCCAGTGCCATGTGGCCCCAGATGCACCTACCTGATGGGAGAGCCAGCCAGGG



[View online >](#)

TCCCCTGAGTCAAGTGGCCAACCCAAAGGAGCGTTTGGGAGCAGTTTGATGCCAAGAACAAGCTGACAT  
GCTCCATCTGCCTGAAGGAGTTCAAGAACCTGCCTGCCCTGAATGGCCACATGCGGTCCCACGGGGGAAT  
GAGGGCTCCCCAACCTCAAACAGGAGGAAGGAGAGAAGGTCTGCCGCTCAGCCCCAGCCCACTG  
CCGCTCCGCCTCCGCCTCCGCCACCACAGCTCCCTCCCAGGCAGAAAGCCTCACGCCTATGGTCA  
TGCCCCGTGTGTCCCTGTCAAGCTTCTCCGCCAAGCCAGCTCTCAGGGTTACCAACAGCACCGT  
TGCCGCCCCCTCCGCCAGAGACAAGCCAGCCAGCTCGATGTCGGACGACGAGATGCCTGTGCTCGAAATC  
CCAGGAAGCATCAGCCGAGTGTGCCAAAGCCGAGGAGCCCTCAAGACCGTGCAGGAGAAGAAAAAGT  
TCCGGCACCGGCCGGAACCTCTCTTATCCCGCCGCCCTCCTACAACCCGAACCCCGCTGCCTCCTA  
CTCGGGGCCACCTGTACCAGAGCCAGCTGCGCTCCCGCGCGTCTCGGGGACCACCTGCTCCTGGAC  
CCCACCCACGAGCTGCCCTTACACGCCCCACCCATGCTGAGCCCGTGCAGGCTCGGGCTCT  
TCAGCAATGCTCTCATCTCCGGCCACGGCCCTGGCGCCACCCGAGCTGCCCTGACGCCCTGACGCC  
CACACCACGGGTGCTGTGTGCTGCTCCAACAGCATCGATGGCAGCAACGTGACGGTACCCACGGGCT  
GGAGAGCAGAGTGTAGATGTTGAACCACGCATCAACATTGGCTTGAGATCCAAGCAGAAATCCCTGAAC  
TCCAAGATATCTCTGCCCTGGCCAGGACACACAAGGCCACACTGGTATGGAAGCCCTGGCCAGAAT  
AGAAAACCATGACCTCCAGCAAAGAGTGGAGAATCTTCTGAATTTGTGCTTCCAGTGCATTGCCAGT  
GGAGGGACCAATTCTGAATTTGCTTTGACTCTCTGTTTGAGGCCAAAGTGATGTGATGGTTGCTCTGG  
AAATGCTGCTACTGCGGAAGCCTGTCAGGTTAAAATGTATCCTTTAGCAAATACCACATGCCCGTTC  
GGCAAAGTGGACCTCCCTAGAAAAGAAAAGTGTAAACAAAGCACTAGCCACTTACAGCAAAGACTTATT  
TTTGTACAGAAGATGGTGAAGTCCAAGACGGTGGCTCAGTGCCTGGAGTACTACTACACGTGAAAAAGA  
TCATGCGGCTGGGGCGGAAACACCGGACACGCCTGGCAGAAATCATCGACGATTGTGTGACAAGTGAAGA  
AGAAGAAGAGTTAGAGGAGGAGGAGGAGGAGGACCCGGAAGAAGATAGGAAATCCACAAAAGAAGAAGAG  
AGTGAGGTGCCAAGTCCCCGGAGCCACCACCCGTCCCGTCTGGCTCCCACGGAGGGCCGCCCTGC  
AGGCCCTGGGCCAGCCCTCAGGCTCCTTCTCATCTGTGAAATGCCCAACTGTGGGGCTGTGTTGAGTCCCG  
ACAGGCACTGAATGGCCATGCCCGCATCCACGGGGCACCAACCAGGTGACCAAGGCCCGAGGTGCCATC  
CCCTCTGGGAAGCAGAAGCCTGGTGGCACCAGAGTGGTACTGTTGCGTAAAGAGCTCACCTCTCACA  
GCACCACCAGCGGAGACAGACACCCACCACCTTCCCTGCAAGGAGTGTGGCAAAGTCTTCTTCAA  
GATCAAAGCCGAAATGCACACATGAAAAGTACAGGCAGCAGGAGGAACAACAGAGGCAAAGGCTCAG  
AAGGCGGCTTTTGCAGCTGAGATGGCAGCCACGATTGAGAGGACTACGGGCCCCGTGGGGCGCCGGGGC  
TGCTGCCCTGGACCAGCTGAGTCTGATCAAACCCATCAAGGATGTGGACATCTCGACGACGACGTCGT  
CCAGCAGTTGGAGGTGTATGGAAGAGGCTGAAGTTGTGGACACCGATCTTCTTGGATGATCAAGAT  
TCAGTCTTGCTTCAGGGTACGCAGAATA

ACGCGTACGCGGCCGCTCGAGCAGAAACTCATCTCAGAAGAGGATCTGGCAGCAAATGATATCCTGGATT  
ACAAGGATGACGACGATAAGGTTAA

**Protein Sequence:** >RC216740 representing NM\_033502  
 Red=Cloning site Green=Tags(s)

```

MGDQQLYKTNHVAHGSENLFYQQPPLGVHSGLNHNHYGNAVTTGGMDAPQASPI SPHFQDTRDGLGLPVG
SKNLGQMDTSRQGGWGS HAGPGNHVQLRGNLANSNMMWGAPAQAEP TDGYQYTYSQASEIRTQKLTSGVL
HKLDSFTQVFANQNLRIQVNNMAQVLTQSAVMDGAPDSALRQLLSQKPM EPPAPAIPSR YQQVPPQPHF
GFTGGLSKPALQVGQHP TQGHLYDYQQPLAQVPVQGGQPLQAPQML SQHMQQMQQHYYPPQQQQAGQ
QRISMQEIQTPQQIRPSQP PPPQQQQPQLQLQQRQGS MQIPQYYQPQPMQHLQEQQQQMHLQPPS
YHRDPHQYTPEQAHTVQLIPLGSM SQYYQEPQQPYSHPLYQQSHLSQHQQREDSQLKTYSSDRQAQAML
SSHGDLGPPDTGMGDPASSDL TRVSSTLPHRPLLSPSGIHLNMMGPQHQQQLSPSAMWPMHLPDGRAQPG
SPESSGQPKGAFGEQFDANKL TCSICLKEFKNLPALNGHMRS HGGMRASP NLKQEEGEKVLPPQP PPL
PPPPPPPPPPQLPPEASLTPMVMPVSVVKLLPPKSSQGFTNSTVAAPSARDKPASSMSDDEMPVLEI
PRKHQSPVPAEELKT VQEKKKFRHRPELFI PPPPSYNPNPAASYS GATLYQS QLSRPRVLDHLLLD
PTHELPPYT PPM LSPVRQSGSLF SNVLSGHGPGAHPQLPL TPLTPTPRVLLCRSNSIDGSNVTPTPGP
GEQTV DVEPRINIGLRFQAEIPELQDISALAQDTHKATLVWKPPELENHDLQQRVENLNLCCSSALPG
GGTNSEFALHSLFEAKGDVMVALEMLLLRKPVRLKCHPLANYHYAGSDKWTSLERKLFNKALATYSKDFI
FVQKMVSKTVAQCVEYYTWKIMRLGRKHRTR LAEIIDDCVTSEEEEEEEEEEDPEEDRKSTKEEE
SEVPKSP EPPVPVLAPTEG PPLQALGQP SGSFICEMPNC GAVFSSRQALNGHARIHGGTNQVTKARGAI
PSGKQKPGGTQSGYCSVKSSPSHSTTSGETDPTTIFPCKE CGKVF FFIKSRNAHMKTHRQEEQQRKAQ
KAAFAAEMAATIERTTGPV GAGLLPLDQLSLIKPIKDV DILDDDDVVQQLGGVMEAEVVD TLLDDDDQD
SVLLQGD AEL
  
```

TRTRPLEQKLISEEDLAANDILDYKDDDDKVV

**Chromatograms:** [https://cdn.origene.com/chromatograms/mk8018\\_d02.zip](https://cdn.origene.com/chromatograms/mk8018_d02.zip)

**Restriction Sites:** SgfI-MluI

**Cloning Scheme:**

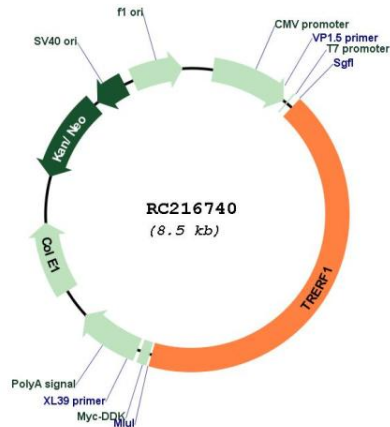


**ACCN:** NM\_033502

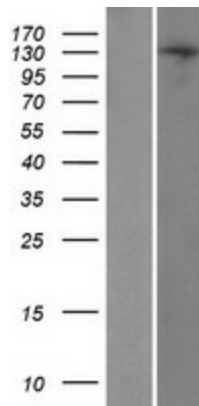
**ORF Size:** 3600 bp

<b>OTI Disclaimer:</b>	The molecular sequence of this clone aligns with the gene accession number as a point of reference only. However, individual transcript sequences of the same gene can differ through naturally occurring variations (e.g. polymorphisms), each with its own valid existence. This clone is substantially in agreement with the reference, but a complete review of all prevailing variants is recommended prior to use. <a href="#">More info</a>
<b>OTI Annotation:</b>	This clone was engineered to express the complete ORF with an expression tag. Expression varies depending on the nature of the gene.
<b>Components:</b>	The ORF clone is ion-exchange column purified and shipped in a 2D barcoded Matrix tube containing 10ug of transfection-ready, dried plasmid DNA (reconstitute with 100 ul of water).
<b>Reconstitution Method:</b>	<ol style="list-style-type: none"><li>1. Centrifuge at 5,000xg for 5min.</li><li>2. Carefully open the tube and add 100ul of sterile water to dissolve the DNA.</li><li>3. Close the tube and incubate for 10 minutes at room temperature.</li><li>4. Briefly vortex the tube and then do a quick spin (less than 5000xg) to concentrate the liquid at the bottom.</li><li>5. Store the suspended plasmid at -20°C. The DNA is stable for at least one year from date of shipping when stored at -20°C.</li></ol>
<b>RefSeq:</b>	<a href="#">NM_033502.4</a>
<b>RefSeq Size:</b>	4395 bp
<b>RefSeq ORF:</b>	3603 bp
<b>Locus ID:</b>	55809
<b>UniProt ID:</b>	<a href="#">Q96PN7</a>
<b>Cytogenetics:</b>	6p21.1
<b>Protein Families:</b>	Druggable Genome, Transcription Factors
<b>MW:</b>	132.1 kDa
<b>Gene Summary:</b>	This gene encodes a zinc-finger transcriptional regulating protein which interacts with CBP/p300 to regulate the human gene CYP11A1. Alternative splicing results in multiple transcript variants encoding different isoforms. [provided by RefSeq, Jul 2014]

Product images:



Circular map for RC216740



Western blot validation of overexpression lysate (Cat# [LY409534]) using anti-DDK antibody (Cat# [TA50011-100]). Left: Cell lysates from untransfected HEK293T cells; Right: Cell lysates from HEK293T cells transfected with RC216740 using transfection reagent MegaTran 2.0 (Cat# [TT210002]).