

Product datasheet for RC216739

DNMBP (NM_015221) Human Tagged ORF Clone

Product data:

Product Type:	Expression Plasmids
Product Name:	DNMBP (NM_015221) Human Tagged ORF Clone
Tag:	Myc-DDK
Symbol:	DNMBP
Synonyms:	ARHGEF36; CTRCT48; TUBA
Mammalian Cell Selection:	Neomycin
Vector:	pCMV6-Entry (PS100001)
E. coli Selection:	Kanamycin (25 ug/mL)
ORF Nucleotide Sequence:	>RC216739 representing NM_015221 Red=Cloning site Blue=ORF Green=Tags(s)

TTTTGTAATACGACTCACTATAGGGCGGCCGGAATTCGTCGACTGGATCCGGTACCGAGGAGATCTGCC
GCC**CGATCGCC**

ATGGAGGCTGGCTCAGTGGTTCGAGCCATTTTGGACTTCTGCCCTAGCGTATCAGAAGAAGTCCGCTCT
TTGTGGGAGATATTATTGAGGTGCTGGCAGTGGTGGATGAATTTGGCTTCTAGGAAAGAAGGAGGATGT
TACAGGACAATCCCCAGCAGTTTTGTGAAATTTGTGACCATTCCAGTCTAAAAGAGGGAGAGAGGCTG
TTTGTGTGCAATTTGAATTCACATCCCAAGAGTTGGATAATCTTCCCCTCCATCGAGGTGACCTGGTGA
TTCTCGATGGCATTCCCCTGCAGGCTGGCTGCAGGGCCGAAGCTGCTGGGGCGCACGGGGCTTCTTCCC
ATCTTCATGTGTCCGCGAGCTCTGCCTCTCCTCACAGAGCCGGCAGTGGCACTCCAGAGCGCCCTGTTT
CAGATTCGGAATATTCCATGGGACAAGCCCGGCCCTAATGGGGCTTTCTGCTCAGCTGGATGAAGAGC
TGGACTTCAGGGAAGGGGATGTGATCACCATTATTGGAGTTCTGAACCAGGCTGGTTTGAAGGGGAGTT
AGAGGGCCGAAGAGGCATTTTTCCAGAAGGTTTTGTAGAGCTGTTGGGGCCCTGAGGACTGTGGATGAG
TCAGTAAGTTCTGGAAATCAAGATGACTGCATTGTTAATGGTGAAGTAGATACCCCGTAGGAGAAGAAG
AGATAGGGCCGGATGAGGATGAGGAGGAGCCAGGACCTATGGGGTCGCCCTGTACAGATTCCAAGCCCT
GGAGCCAAATGAGCTGGATTTTCGAGGTTCGGGATAAAAATCCGAATTCGGCGACCTTGAAGATGGCTGG
CTGGAAGGATCCCTGAAGGGCAGGACAGGCATTTTCTTACCGGTTTGTGAAATTAATGTCCTGACACAC
GGGTGGAGGAAACCATGGCTCTGCCCCAGGAAGGCAGCCTTGCCAGGATCCCGGAAACTCTTTGGATTG
TTTGGAGAACACCTTAGGAGTAGAGGAACAAAGACATGAAACCAGTGACCATGAGCCGAGGAGCCTGAC
TGCATTATTTCTGAAGCACCCACTTCTCCCCTCGGTCACTGACTTCAGAGTATGACACAGACAGAAACT
CTTATCAGGACGAGGACACCGCAGGAGGGCCCCGAGAAGCCAGGCGTGGAGTGGGAAATGCCTCTTGC
CACAGACTCTCCACATCTGACCCTACAGAAGTAGTCAATGGTATTTCTCCCACTCAGGTCCCTTTT
CATCCCAACTGCAGAAAAGCCAGTATTATTCTACAGTGGGAGGAAGCCACCCGCACTCAGAACAGTACC
CCGACCTTCTCCCCTAGAAGCAAGGACTAGAGACTATGCCAGCCTACCTCCCAAAGAATGATTTCCCA
GCTAAAACCTCTCAGAAGCCAGTCTCCCTCTTACAGGGGCTCTTCTGTTTCAGTTCAGGGTATGC



[View online >](#)

AAACCCAGACAATCAAGTCCTCAGCTCCACAACCTAGCAAGTTATACTAAAAAGCACACACGTCCAGTG
TTTACTCCATCTCAGAGAGATTGGAGATGAAGCCTGGTCCGCAAGCCCAAGGGCTTGTATGGAAGCAGC
AACACATTCACAGGGAGACGGCAGCACTGACCTGGACTCGAAGCTGACACAACAGCTGATCGAGTTTGGAG
AAGAGCTTGGCAGGGCCCGGCACAGAGCCAGATAAAAATTTACGCCACTTTTCAATCATGGACTTTAACT
CTGAGAAGGATATTGTCCGAGGTTCTCAAAGTTAATCACCGAGCAGGAGCTGCCGAAAGGAGAAAAGGC
CCTAAGGCCACCGCCACCTCGTCCCTGTACTCCGGTATCCACTTCTCCCCATTTGCTGGTTGACCAGAAC
CTAAAACCTGCACCACCCTTGGTGGTGGCACCCTCTCGCCAGCTCCCCCTGCCTCCCTCAGCACAGCAGA
GAACGAATGCGGTATCCCCAAGCTCCTATCTCGACACCCTCTACCTGTGAGACCTTAGAAAAGGAGGG
CCCTGGTCATATGGGAAGGAGTCTGGACCAGACCTCCCCATGCCCTTAGTGCTGGTGAGGATTGAGGAA
ATGGAGCGGGACTTGGATATGTACAGTAGAGCTCAAGAAGAGCTAAACCTCATGTGGAGGAGAAGCAGG
ATGAATCATCAAGAGCAGAGACCCTCGAGGATCTCAAGTTCTGTGAAAGTAACATTGAAAGTTTGAATAT
GGAACCTCAGCAACTAAGAGAAATGACGCTCCTCTCCTCCAGTCTTCATCACTGGTGGCCCTTCTGGG
TCTGTGTCTGCCGAAAATCCAGAGCAGAGGATGCTGGAGAAGAGAGCCAAGGTCATAGAAGAACTTCTTC
AGACAGAAAGAGACTACATTCGGGATCTGGAAATGTGTATTGAGCGGATCATGGTACCCATGCAGCAGGC
ACAGGTACCAAACATTGATTTTGGAGGACTTTTTGGAAATATGCAGATGGTGATTAAGGTCTCGAAGCAA
TTATTGGCTGCTCTGAAATCAGCGATGCTGTAGGACCTGTGTTCTTGGTCACCGGGATGAGCTTGAGG
GAACATACAAGATTTACTGCCAGAATCATGATGAGGCCATTGCGCTGCTTGAATCTACGAGAAGGATGA
GAAGATCCAGAAGCATCTTCAGGACTCCTTGGCAGATCTGAAGAGCCTATACAACGAATGGGGATGCACA
AATTATATTAACCTGGGCTCCTTCTCATCAAACCACTACAGAGAGTAATGCGTTACCCGCTGTTGCTAA
TGGAGTTGCTGAATCCACCCAGAAATCCACCCAGATAAAGTGCCTTTAACCAATGCAGTCCTTGGCGT
CAAGGAAATCAACGTTAACATTAATGAATATAAACGGCGAAAGGACCTGGTCTCAAGTACCGTAAGGGT
GATGAAGATAGCCTTATGGAGAAAATTTCAAACCTGAACATCCACTCCATCATCAAGAAATCCAACCGAG
TTAGCACTACCTGAAGCATCTCACTGGCTTTGCTCCTCAGATAAAAGATGAAGTATTTGAAGAAAACAGA
AAAAAACTTCCGAATGCAAGAAAGATTGATTAAGTCTTTTATCCGAGACCTGTCTCTACCTCCAGCAC
ATCCGGGAGTCCGCATGTGTAAAGTGGTGGCTGCTGTGAGCATGTGGGATGTGTGCATGGAGAGAGGAC
ACCGGGACCTGGAGCAGTTTGGAGGGTGCATCGCTACATCAGTGACCAGCTCTTCAAAAATTTAAGGA
GAGGACAGAGCGGCTTGTATCTCCCCCTAAATCAGTTACTGAGCATGTTTACAGGGCCCCATAAGCTG
GTACAGAAACGCTTTGACAAGCTCCTGGACTTCTATAACTGTACAGAACGGGCAGAAAAGCTAAAGGACA
AGAAGACCCTGGAGGAGCTGCAGTCGGCCCGGAACAATATGAGGCCCTGAATGCACAGCTGCTGGATGA
GCTGCCAAGTCCACCAGTACGCCAGGGCTCTTACCAACTGTGTCCACGGCTATGTGAAGCCAC
TGTGACTTTGTGACCAGGCTCTGGAGCAATTAAGCCACTGCTTTCGTTACTCAAAGTGGCTGGCAGAG
AGGGAAACCTTATCGCCATCTTCCAGCAAGAGCACAGCAGAGTTCTGCAGCAACTCCAGGTTTTTACCTT
CTTCCCGAGTCTCTTCCAGCTACCAAGAAACCGTTTGGAGGAAAACCTTACCCGACGCTGCTGCTCGA
AAGCCACTCCTGGGCTGCCAAGTTACATGCTACAGTCAGAAGAACTCCGGGCTCCCTCCTGGCCAGGT
ATCCCCCTGAAAACTCTTCCAGGCAGAACGAACTTCAATGCTGCCAAGACTTGGATGTCTCACTTTT
GGAAGGTGACCTGGTGGTGTGATTAAGAAAAAGACCCCATGGGAGCCAGAACCGCTGGCTGATTGAC
AATGGAGTCACCAAAGGCTTGTGTACAGCTCTTCTAAAGCCCTACAATCCTCGCCGACGCACTCCG
ATGCTCCGTGGTAGCCACTCTCCACAGAGTCTGAGCACGGCAGCTCCTCCCCAGGTTCCACGCCA
GAACAGCGCAGCACCCCTGACCTTCAACCCAGCAGCATGGCTGTATCCTTTACCTCGGGTCTTGGCCAG
AAGCAGCCTCAAGATGCATCTCCTCCGCAAAAAGAAATGTGACCAAGGAACCTCAGTGCATCCCTAAATC
CGAGTAATTCAGAGAGTAGTCTTCCAGATGCCCTTCCAGCCAGACTCCACCTCCAGCCAAGGTGAGG
GGACTCTGCAGATGTAGCTAGAGATGTAAGCAGCCACTGCCACGCCGAGGAGTACCAGCACTTCCAGG
CATCCAGAAATAGTTGGCTACTCCGTACCAGGACGAAATGGGCAAAGTCAAGACCTCGTCAAAGGATGTG
CAAGAACAGCCAGGCTCCGGAAGACAGAAGTACAGAGCCAGATGGCAGTGAGGCAGAAGGCAACCAGGT
CTATTTGCTGTCTACACCTTCAAGGCACGAAACCCAAATGAGCTGAGCGTGTACGCCAATCAGAAACTC
AAGATCCTCGAGTTAAAGATGTTACAGGAAATACAGAGTGGTGGTTAGCTGAGGTTAACGGGAAGAAGG
GCTACGTTCCCTCAATTATATCCGCAAAACCGAGTACACC

ACGCGTACGCGGCCGCTCGAGCAGAAACTCATCTCAGAAGAGGATCTGGCAGCAAATGATATCCTGGATT
ACAAGGATGACGACGATAAGGTTTAA

Protein Sequence: >RC216739 representing NM_015221
 Red=Cloning site Green=Tags(s)

```
MEAGSVVRAIFDFCPSVSEELPLFVGDIIIEVLAVVDEFWLLGKKEDVTGQFPSSFVEIVTIPSLKEGERL
FVCICEFTSQELDNLPLHRGDLVLDGIPTAGWLQGRSCWGARGFFPSSCVRELCLSSQSRQWHSQSALF
QIPEYSMGQARALMGLSAQLDEELDFREGDVITIIIGVPEPGWFEGELEGRRGIFPEGFVELLGPLRTVDE
SVSSGNQDDCIVNGEVDTPVGEIEEIGPDEDEEEEPGTYGVALYRFQALEPNELDFVEQDKIRILATLEDGW
LEGLSKGRTGIFPYRFVKLCPDTRVEETMALPQEGSLARIPETSLDCLENTLGVEEQRHETSDHEAEEP
CIISEAPTSPLGHLTSEYDTRNSYQDEDTAGGPPRSPGVWEMPLATDSPTSPTSDTEVVNGISSQPQVFF
HPNLQKSQYYSTVGGSHPHSEQYPDLLPLEARTDYASLPPKRMYSQLKTLQKPVLPYRGSSVSASRVV
KPRQSSPQLHNLASYTKKHTSSVYSISERLEMKPGPQAQGLVMEATHSQDGDGTDLDSKLTQQLIEFE
KSLAGPGTEPDKILRHFSIMDFNSEKDIVRGSSKLITEQELPERRKALRPPPPRCPVSTSPHLLVDQN
LKPAPPLVVRPSRAPLPPSAQQRNAVSPKLLSRHRPTCETLEKEGPGHMGRSLDQTSPCPLVLRIEE
MERDLDMYSRAQEELNMLEEKQDESSRAETLEDLKFCESNIESLNMELQQLREMTLLSSQSSSLVAPSG
SVSAENPEQRMLEKRAKVEELLQTERDYIRDLEMCIERIMVPMQQAQVFNIDFEGLFGNMQMVIKYSKQ
LLAALEISDAVGPVFLGHRDELEGTYKIYCNHDEAIALLEIYEKDEKIQKHLQDSLADLKSLYNEWGCT
NYINLGSFLIKPVQRMRYPLLLMELLNSTPESHDPKVPILTNAVLAVKEINVNINEYKRRKDLVLKYRKG
DEDSLMEKISKLNIIHSIIKKSNRVSSHLKHLTGFAPQIKDEVFEETEKNFRMQLIKSFIRDLSLYLQH
IRESACVKVVAASMWDVCMERGHDRLEQFERVHRYISDQLFTNFKERTERLVISPLNQLLSMFTGPHKL
VQKRFDKLLDFYNCTERAELKDKKTLLEELQSARNNYEALNAQLLDELPKFHQYAQGLFTNCVHGYAEA
CDFVHQALEQLKPLL SLLKVAGREGNLI AIFHEEHSRVLQQLQVFTFFPESLPATKKPFERKIDRQSAR
KPLLGLPSYMLQSEELRASLLARYPPEKLFQAERNFNAQDLVSLLEGLDVGVIKKKDPMGSQNRWLID
NGVTKGFVYSSFLKPYNPRRSHSDASVGSHSSTESEHGSSSPRFRQNSGSTLTFNPSSMAVSFTSGSCQ
KQPQDASPPPKECDQGLSASLNPSNSESSSRCPSPDPDSTSQPRSGDSADVARDVKPTATPRSYRNFR
HPEIVGYSVPGRNGQSQDLVKGCARTAQAPEDRSTPEPDGSEAEGNQVYFVYTFKARNPNELSVSANQKL
KILEFKDVTGNTEWLAEVNGKKGYVPSNYIRKTEYT
```

TRTRPLEQKLISEEDLAANDILDYKDDDDKV

Chromatograms: https://cdn.origene.com/chromatograms/mk8018_d03.zip

Restriction Sites: SgfI-MluI

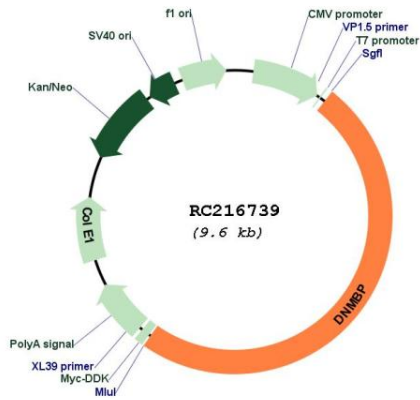
Cloning Scheme:



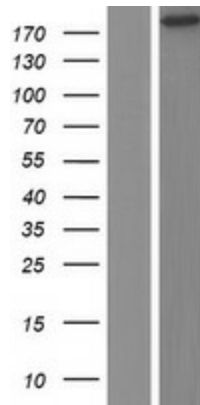
ACCN: NM_015221

ORF Size:	4731 bp
OTI Disclaimer:	The molecular sequence of this clone aligns with the gene accession number as a point of reference only. However, individual transcript sequences of the same gene can differ through naturally occurring variations (e.g. polymorphisms), each with its own valid existence. This clone is substantially in agreement with the reference, but a complete review of all prevailing variants is recommended prior to use. More info
OTI Annotation:	This clone was engineered to express the complete ORF with an expression tag. Expression varies depending on the nature of the gene.
Components:	The ORF clone is ion-exchange column purified and shipped in a 2D barcoded Matrix tube containing 10ug of transfection-ready, dried plasmid DNA (reconstitute with 100 ul of water).
Reconstitution Method:	<ol style="list-style-type: none">1. Centrifuge at 5,000xg for 5min.2. Carefully open the tube and add 100ul of sterile water to dissolve the DNA.3. Close the tube and incubate for 10 minutes at room temperature.4. Briefly vortex the tube and then do a quick spin (less than 5000xg) to concentrate the liquid at the bottom.5. Store the suspended plasmid at -20°C. The DNA is stable for at least one year from date of shipping when stored at -20°C.
RefSeq:	NM_015221.1 , NP_056036.1
RefSeq Size:	4734 bp
RefSeq ORF:	4734 bp
Locus ID:	23268
UniProt ID:	Q6XZF7
Cytogenetics:	10q24.2
MW:	177.2 kDa
Gene Summary:	This gene encodes a protein belonging to the guanine nucleotide exchange factor family, and which regulates the configuration of cell junctions. It contains multiple binding sites for dynamin and thus links dynamin to actin regulatory proteins. Polymorphisms in this gene have been linked to Alzheimer's disease in some populations, though there are conflicting reports of such linkages in other populations. Alternative splicing results in multiple transcript variants. [provided by RefSeq, Dec 2015]

Product images:



Circular map for RC216739



Western blot validation of overexpression lysate (Cat# [LY414696]) using anti-DDK antibody (Cat# [TA50011-100]). Left: Cell lysates from untransfected HEK293T cells; Right: Cell lysates from HEK293T cells transfected with RC216739 using transfection reagent MegaTran 2.0 (Cat# [TT210002]).