

Product datasheet for **RC216735**

CDCA7 (NM_031942) Human Tagged ORF Clone

Product data:

Product Type:	Expression Plasmids
Product Name:	CDCA7 (NM_031942) Human Tagged ORF Clone
Tag:	Myc-DDK
Symbol:	CDCA7
Synonyms:	ICF3; JPO1
Mammalian Cell Selection:	Neomycin
Vector:	pCMV6-Entry (PS100001)
E. coli Selection:	Kanamycin (25 ug/mL)



[View online »](#)

ORF Nucleotide Sequence:

>RC216735 representing NM_031942
 Red=Cloning site Blue=ORF Green=Tags(s)

TTTTGTAATACGACTCACTATAGGGCGGCCGGAATTCGTCGACTGGATCCGGTACCGAGGAGATCTGCC
 GCC**CGCATCGCC**

ATGGACGCTCGCCGCTGCCGAGAAAGATCTCAGAGTAAAGAAGAACTTAAAGAAATTCAGATATGTGA
 AGTTGATTTCCATGGAAACCTCGTCATCCTCTGATGACAGTTGTGACAGCTTTGCTTCTGATAATTTTGC
 AACACGAAACCTAAATTCAGGTCAGATATCAGTGAAGAAGTGGCAAATGTTTTTATGAGGACTCTGAT
 AATGAATCTTTCTGCGGCTTTTCAGAAAGTGAGGTGCAAGATGTATTAGACCATTGTGGATTTTACAGA
 AACCAAGGCCAGATGTCCTAACGAACTGGCCGGTATTTTTCATGCCGACTCTGACGATGAATCATTTTG
 CGGTTTCTCAGAGAGTGAGATACAAGATGGAATGAGGCTGCAGTCAGTTCGGGAAGGCTGTAGGACCCGC
 AGCCAGTGCAGGCACTCTGGACCTCTCAGGGTGGCGATGAAGTTCCAGCGCGGAGTACCAGGGGAGCAA
 CCAACAAAAAGCAGAGTCCCGCCAGCCCTCAGAGAATTCGTGACTGATTCCAACCTCCGATTCCAGAAGA
 TGAAGTGAATGAATTTTTGGAGAAAAGGGCTTTAAATATAAAGCAAAACAAAGCAATGCTTGCAAAA
 CTATGTCTGAATTAGAAAGCTTCCCTGGCTCGTTCCGTGGAAGACATCCCTCCAGGCTCCGACTCAC
 AATCAAGGAGACCGGAAGGCGTACATTCGCGGTGTTGCTTCCAGGAGAAACCTGAACGGAGAGCTCG
 TCCTCTTACCAGGTCAAGGTCCCGGATCCTCGGGTCCCTTGACGCTTACCCATGGAGGAGGAGGAGGAA
 GAGGATAAGTACATGTTGGTGAGAAAGAGGAAGACCGTGGATGGCTACATGAATGAAGATGACCTGCCCA
 GAAGCCGTCGCTCCAGATCATCCGTGACCTTCCGCATATAATTCGCCAGTGAAGAAATTACAGAGGA
 GGAGTTGAGAACGTCTGCAGCAATTCTCGAGAGAAGATATAACCGTTCACTGGGCTCACTTGTGCAT
 CAATGCCGTGAGAAGACTATTGATACAAAACAACTGCAGAAACCCAGACTGCTGGGGCGTTCGAGGCC
 AGTTCTGTGGCCCTGCCTTCGAAACCGTTATGGTGAAGAGGTCAGGGATGCTCTGCTGGATCCGAAGCTG
 GCATTGCCCGCCTTGTGAGGAATCTGCAACTGCAGTTTCTGCCGCGAGGAGATGGACGGTGTGCGACT
 GGGTCTTGTGTATTTAGCAAATATCATGGCTTTGGGAATGTGCATGCCTACTTGAAAAGCCTGAAAC
 AGGAATTTGAAATGCAAGCA

ACGCGTACGCGGCCGCTCGAGCAGAACTCATCTCAGAAGAGGATCTGGCAGCAAATGATATCCTGGATT
 ACAAGGATGACGACGATAAGGTTTAA

Protein Sequence:

>RC216735 representing NM_031942
 Red=Cloning site Green=Tags(s)

MDARRVPQKDLRVKKNLKKFRYVKLISMETSSSSDDSCDSFASDNFANTKPKFRSDISEELANVFYEDSD
 NESFCGFSESEVQDVLHCGFLQKPRPDVTNELAGIFHADSDDESFCGFSESEIQDGMRLQSVREGCRTR
 SQCRHSGPLRVAMKFPARSTRGATNKKAESRQPSSENSVTDNSDSEDESGMNFLEKRALNIKQNKAMLAK
 LMSELESFPGSFRGRHPLPGSDSQSRRRPRRRTFPGVASRRNPERRARPLTRSRIRLGLDALPMEEEEE
 EDKYMLVRKRKTVDGYMNEDDLPRSRRSSVTLPHIIRPVEEITEELENVCSNSREKIYNRSLGSTCH
 QCRQKTIIDTKNCRNPDWVGRGQFCGPCLRNRYGEEVRDALLDPNWHCPPCRGICNCSFCRQRDGRCAT
 GVLVYLAKYHGFNVHAYLKSLSKQEFEMQA

TRTRPLEQKLISEEDLAANDILDYKDDDDKV

Chromatograms:

https://cdn.origene.com/chromatograms/mg3818_a05.zip

Restriction Sites:

Sgfl-Mlul

Cloning Scheme:


ACCN: NM_031942

ORF Size: 1350 bp

OTI Disclaimer: The molecular sequence of this clone aligns with the gene accession number as a point of reference only. However, individual transcript sequences of the same gene can differ through naturally occurring variations (e.g. polymorphisms), each with its own valid existence. This clone is substantially in agreement with the reference, but a complete review of all prevailing variants is recommended prior to use. [More info](#)

OTI Annotation: This clone was engineered to express the complete ORF with an expression tag. Expression varies depending on the nature of the gene.

Components: The ORF clone is ion-exchange column purified and shipped in a 2D barcoded Matrix tube containing 10ug of transfection-ready, dried plasmid DNA (reconstitute with 100 ul of water).

- Reconstitution Method:**
1. Centrifuge at 5,000xg for 5min.
 2. Carefully open the tube and add 100ul of sterile water to dissolve the DNA.
 3. Close the tube and incubate for 10 minutes at room temperature.
 4. Briefly vortex the tube and then do a quick spin (less than 5000xg) to concentrate the liquid at the bottom.
 5. Store the suspended plasmid at -20°C. The DNA is stable for at least one year from date of shipping when stored at -20°C.

RefSeq: [NM_031942.5](#)

RefSeq Size: 2839 bp

RefSeq ORF: 1353 bp

Locus ID: 83879

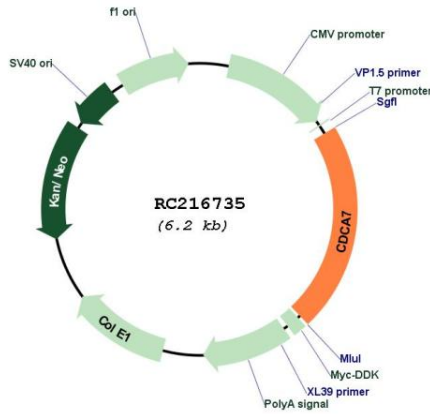
UniProt ID: [Q9BWT1](#)

Cytogenetics: 2q31.1

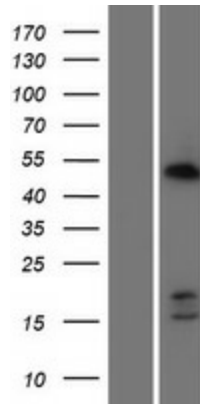
MW: 51.3 kDa

Gene Summary: This gene was identified as a c-Myc responsive gene, and behaves as a direct c-Myc target gene. Overexpression of this gene is found to enhance the transformation of lymphoblastoid cells, and it complements a transformation-defective Myc Box II mutant, suggesting its involvement in c-Myc-mediated cell transformation. Two alternatively spliced transcript variants encoding distinct isoforms have been reported. [provided by RefSeq, Jul 2008]

Product images:



Circular map for RC216735



Western blot validation of overexpression lysate (Cat# [LY410426]) using anti-DDK antibody (Cat# [TA50011-100]). Left: Cell lysates from untransfected HEK293T cells; Right: Cell lysates from HEK293T cells transfected with RC216735 using transfection reagent MegaTran 2.0 (Cat# [TT210002]).