

Product datasheet for RC216734

SH3TC1 (NM_018986) Human Tagged ORF Clone

Product data:

Product Type:	Expression Plasmids
Product Name:	SH3TC1 (NM_018986) Human Tagged ORF Clone
Tag:	Myc-DDK
Symbol:	SH3TC1
Mammalian Cell Selection:	Neomycin
Vector:	pCMV6-Entry (PS100001)
E. coli Selection:	Kanamycin (25 ug/mL)
ORF Nucleotide Sequence:	>RC216734 representing NM_018986 Red=Cloning site Blue=ORF Green=Tags(s)

TTTTGTAATACGACTCACTATAGGGCGGCCGGAATTCGTCGACTGGATCCGGTACCGAGGAGATCTGCC
GCCCGATCGCC

ATGGAGAACCTCCCTGCCGTGACCACTGAGGAGCCGACCCCATGGGGAGGGTCTGTGGGACCCTCAG
GAGGTGGCAGCACCCGGGACCAGGTCCGGACTGTGGTCATGAGGCCCTCTGTGAGCTGGGAGAAAGCGGG
GCCCGAGGAGGCCAAGGCGCCAGTGAGAGGCGACGAGGCTCCTCCTGCCCGCTGGCTGGCCTGCTGCT
GGGACCCTCCCTGCCAGATGGGGTTTATCCCACAGACCTGACCCTGCAGCTGTGGCTGTGCGGAGGA
AGAGCAGACTGCGGGACCCCGCCTACAGCAGACCTCCGGGGCCAGCTCCGCCTGGAGAATGATAG
CCGGGAGATGGCCCGCTGTGGGAATTATCAGCCAGGCTGTGTCCATCCACAGTGACCAGGACCCGG
ATCGTGGTGACGTTTAAAGACTTTTGAAGAAATCTGGAAGTTTTCCACCTACCATGCTCTCGGCTTACTC
ATCACTGCCTGGCAAACCTGCTCATGGACCAGGCTTCTGGCTGCTTGGCCAGTGAGGAGGAGGAGAC
GGCCATCCAAGTCCATGTGGATGAGAACGCCTTAAAGGCTGACCCACGAGAGCCTCCTCATCCAAGAAGGG
CCCTTCTTTGCTGTGTCTGACCACCATGTGAGAGTGATGACGGTCCCGGGATGCAGGAAATGGCC
CCCAGGCCCTCAGGACGCTTCCGGGGCACCCAGGGAGAGGCGGCCCGGAAACAGACTTTCACCGCC
GAGCCCCAGCGTGTCTCCGAGGAGGTGGCAGTGGCGGCCCGCCGAGCCTTTGATTCCATTTTCATCAG
TGGGCTCTTAGGATCCCCAGGACCCATCGACGATGCCATGGGTGGCCCTGTGATGCCCGCAACCCGC
TGATGGCTGTGGCCTGGCCTCGCATTGGCAGACTTCCAGGGCTCGGGGCCCAAGAGATGACCTTCCG
AGGTGGCGACCTCATCGAGATCCTTGGGGCGCAGGTGCCAGCCTGCCCTGGTGCCTGGGCGACACGCA
GCCTCGGGCCGGTGGGTTTGTGCGGAGCAGCCTCATCAGCATGCAGGGCCCGGTGTCCGAGTTGGAAA
GTGCGATTTTTCTCAATGAGGAAGAAAAGTCAATTTTCAGCGAGGGCTGCTTTTCTGAGGAGGATGCCAG
GCAGTTGCTGAGGCGGATGTCCGGCACCAGTGTCTGCAGCGTGTACAGCCTGGACTCAGTAGAGGAAGCT
GAGACCGAGCAGCCGAGGAAAAAGAAATACCTCCACCTTGCTGAGCCCGGAGCCACAGGAGACCTTGC
AGAAGGTGAAGAATGTTCTGGAACAATGCAAGACCTGCCAGGCTGCCCCAGGAGCCAGCGTCTGGGG
TCTCTGTGCGGCATCCAGCGAGTGTGAGCTTGCAGGACCCGAGGAGCCCTCCTTGTGTTGGAACCGGAG
GACGACTGGGAGGACCCAGAGGCCCTGAGCTCACTGCTGCTTTCCTGAACGCCCTGGGTACAAGGCCA
GCTTCCGTGGCCTGTACGATGTGGCGCTGCCGTGGCTGAGCAGCGTGTCCGAGCTTACGCGACGAGGA



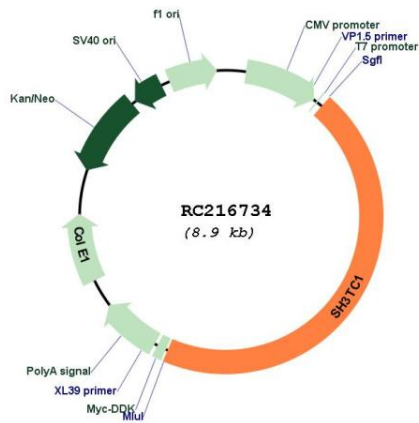
[View online »](#)

GGAGCTGACTGGGCGCCTGGCACAGGCCCGGGGGCGGCCAAGAAAGCTGGCCTCCTCATGGCCCTGGCC
AGGCTCTGCTTCTCCTGGGGCGGCTGTGCAGCAGGAGGCTCAAGCTGTCCCAGGCCCGGGTGTACTTTG
AGGAAGCGCTGGGGGCCCTGGAGGGCAGCTTCGGGGACCTGTTCTCTAGTGGTGGCTGTGTACGCCAACCT
GGCCAGCATTTACCGGAAGCAGAAGAACCAGGGAGAAGTGTGCACAGGTGGTGCCTAAAGCCATGGCCCTG
CTCCTGGGGACGCTGACCACATCTGCAGCACCAGGGCGAGGGGGAGCTCCTGCAGCTGGCGCTGCGGC
GGGCGGTGGTGGCCAGAGCCTGCAGGCCGAGGCCCGGGCCTGCTTCTGCTGGCCAGGCACCACGTGCA
CCTCAAGCAGCCCGAGGAGGCCCTGCCCTTCTAGAGCGGCTGCTGCTTTTGCACAGGGACTCGGGAGCC
CCAGAGGCCGCTGGCTCTCAGACTGCTACCTACTCCTGGCTGACATCTACAGCCGCAAGTGCCTGCCCC
ACCTGGTGTGAGCTGTGTCAAGGTGGCCTCATTGCGGACACGGGGCTCGCTGGCCGGCTCGCTGAGGAG
TGTGAACCTGGTGTCCAGAACGCCCCACAGCCACAGCCTCCCTGCCAAACTTCCACTACCTCAGG
CAAGCGCTGGCCTCCCTGACCCGGGCACAGGCCAGGCGTGCAGCGCCCTCTACACCAGCTTGCC
AGCTGTACAGCCACCATGGTGCACGGCCCGGCATCACCTTATGACGCAGGCAGTGAAGCCAGTGC
TATTGCCGGAGTCCGTGCCATCGTGGACCCTGGTGGCCCTGGCCTGGTGCACGTGCTTATGGGCAG
AGCCCGGTGGCCCTGGACATCTGCAGTCTGTCCGGGATGCAGTGGTGGCCAGCAGGACCAGGAGGGCG
TGATTGCCAACATGGTGGCCGTGGCTCTGAAGAGGACGGGCCGGACGAGGCAGGCAGCTGAGAGCTACTA
CCGCGCCCTGCGGGTGGCTCGGGACCTGGGCCAGCAAAGGAACCAGGCAGTGGGGCTGGCCAACTTCGGG
GCCCTGTGCCTGCATGCGGGTGCACGAGGCTGGCCAGCACTACCTCCTGGAGGCCGTGCGGCTGTTCT
CGAGGCTGCCCTTGGGGAGTGTGGCCGGGACTTACCCACGTGCTCCTGCAGCTGGGCCATCTCTGCAC
CCGCCAGGGCCCGGCCAGCAGGGCAAGGGCTACTACGAGTGGGCCCTTCTGGTCCGCGTGGAGATGGGC
CACGTGGAGAGCCAGCTGCGGGCCGTCCAGCGGCTGTGCCACTTCTACAGCGCCGTATGCCAGCGAGG
CCCAGTGTGTCTACCATGAGCTCCAGCTCTCCCTGGCCTGCAAGGTGGCCGACAAGGTGCTGGAGGG
GCAGCTCCTGGAGACCATCAGCCAGCTTACCTGTCCCTGGGCACCGAGCGGGCTACAAATCCGCACTG
GACTACACCAAACGAAGTCTGGGGATTTTCATTGACCTCCAGAAGAAAGAGAAGGAGGCATGCCTGGC
TGCAAGCAGGGAAGATCTATTACATCTTGCGGCAGAGCGAGCTGGTGGACCTCTACATCCAGGTGGCACA
GAACGTGGCCCTGTACACAGGCGACCCCAACTGGGGCTGGAGCTGTTTGAGGCGGCTGGAGACATCTTC
TTCGACGGGGCCTGGGAGCGGGAGAAAGCTGTGTCTTCTACCGGGACCGGGCCCTGCCCTGGCAGTGA
CTACGGGCAACCGAAGGCGGAGCTGCGGCTGTGCAACAAGCTGGTGGCACTGCTGGCCACGCTGGAGGA
GCCCCAGGAGGGCTTGGAGTTTGCCACATGGCCCTAGCACTCAGCATCACCTGGGGGACCGGCTGAAC
GAGCGCTGGCCCTACCACCGGCTGGCCGCCCTGCAACACCGACTGGGCCATGGCGAGCTGGCAGAGCACT
TCTACCTCAAGGCCCTGTCGCTCTGCAACTCGCCGCTGGAGTTTGACGAGGAGACCCTCTACTACGTGAA
GGTGTACCTGGTGTGCTCGGTGACATCATCTTCTACGACCTGAAGGACCCGTTTGATGCAGCCGGTACTAC
CAGCTGGCGCTGGCGGCCCGGTGGACCTGGGCAACAAGAAGGCACAGCTGAAGATCTACACGCGGCTGG
CCACCATCTACCAAACTTCTCCTGGACCGTGAGAAAGTGCCTCTTCTTCTACCAGAAGGCCAGGACCTT
CGCCACAGAGCTCAACGTCCGAGGGTCAACCTGCCTCCTCTGCCACTCTGCGGGTGGGCCCCCTGGTTG
GCCCCAGCCACCCTCGC

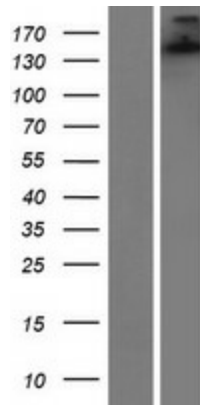
ACGCGTACGCGGCCGCTCGAGCAGAACTCATCTCAGAAGAGGATCTGGCAGCAATGATATCCTGGATT
ACAAGGATGACGACGATAAGGTTTAA

OTI Disclaimer:	The molecular sequence of this clone aligns with the gene accession number as a point of reference only. However, individual transcript sequences of the same gene can differ through naturally occurring variations (e.g. polymorphisms), each with its own valid existence. This clone is substantially in agreement with the reference, but a complete review of all prevailing variants is recommended prior to use. More info
OTI Annotation:	This clone was engineered to express the complete ORF with an expression tag. Expression varies depending on the nature of the gene.
Components:	The ORF clone is ion-exchange column purified and shipped in a 2D barcoded Matrix tube containing 10ug of transfection-ready, dried plasmid DNA (reconstitute with 100 ul of water).
Reconstitution Method:	<ol style="list-style-type: none">1. Centrifuge at 5,000xg for 5min.2. Carefully open the tube and add 100ul of sterile water to dissolve the DNA.3. Close the tube and incubate for 10 minutes at room temperature.4. Briefly vortex the tube and then do a quick spin (less than 5000xg) to concentrate the liquid at the bottom.5. Store the suspended plasmid at -20°C. The DNA is stable for at least one year from date of shipping when stored at -20°C.
RefSeq:	NM_018986.4 , NP_061859.3
RefSeq Size:	4239 bp
RefSeq ORF:	4011 bp
Locus ID:	54436
UniProt ID:	Q8TE82
Cytogenetics:	4p16.1
Domains:	TPR, SH3
MW:	146.8 kDa

Product images:



Circular map for RC216734



Western blot validation of overexpression lysate (Cat# [LY412827]) using anti-DDK antibody (Cat# [TA50011-100]). Left: Cell lysates from untransfected HEK293T cells; Right: Cell lysates from HEK293T cells transfected with RC216734 using transfection reagent MegaTran 2.0 (Cat# [TT210002]).