

## Product datasheet for RC216730

### TTPAL (NM\_001039199) Human Tagged ORF Clone

#### Product data:

Product Type:	Expression Plasmids
Product Name:	TTPAL (NM_001039199) Human Tagged ORF Clone
Tag:	Myc-DDK
Symbol:	TTPAL
Synonyms:	C20orf121
Mammalian Cell Selection:	Neomycin
Vector:	pCMV6-Entry (PS100001)
E. coli Selection:	Kanamycin (25 ug/mL)
ORF Nucleotide Sequence:	>RC216730 ORF sequence Red=Cloning site Blue=ORF Green=Tags(s)

TTTTGTAATACGACTCACTATAGGGCGGCCGGAATTCGTCGACTGGATCCGGTACCGAGGAGATCTGCC  
GCC**CGATCGCC**

ATGTCGGAAGAAAGTGACTCTCTGAGAACCAGCCCTTCTGTGGCCTCACTCTCTGAAAAATGAGCTGCCAC  
CACCACCTGAGCCTCCGGGCTATGTGTGCTCACTGACAGAAGACCTGGTCACCAAAGCCCGGAAGAGCT  
GCAGGAAAAGCCGAATGGAGACTTCGAGATGTGCAGGCCCTTCGTGACATGGTGCGAAGGAGTACCCC  
AACCTGAGCACATCCCTCGACGATGCCTTCCTGTGCGCTTCCTCCGAGCCCGCAAGTTTGATTACGACC  
GGGCCCTGCAGCTCCTCGTCAACTACCACAGCTGTAGAAGAAGCTGGCCCGAAGTCTTCAATAACTTGAA  
GCCATCAGCCTTAAAAGATGTCCTTGCTCCGGGTTCTCACCGTGTGCCCCACACTGACCCAGGGGC  
TGCCATGTGCTGTCATCCGCCCAGACAGATGGATACCAAGCAACTATCCAATTACTGAAAAATCCGAG  
CCATATACTTGACCTTAGAAAACTCATTCACTGTGAAGAAACCCAGGTGAATGGAATTGTAATTCTTGC  
AGACTACAAAGGAGTGAGTTTATCAAAAGCATCTCACTTTGGCCCTTTTATAGCCAAAAGGTGATTGGC  
ATCCTCCAGGATGGTTTCCCATTCGGATAAAAGCAGTCCATGTGGTGAATGAACCTCGAATATTTAAAG  
GCATTTTGGCCATCATAAAACATTTCTAAAGGAGAAAATAGCAAACAGATTCTTCTCCATGGGTCTGA  
CTTGAACCTCTCCACACAAAACCTTCCAAGAAGCATCTCCCAAGGAGTATGGGGCACGGCTGGGGAG  
CTGGACACTGCCACCTGGAACCGGTAAGTGTGGCTTCAAGAAGCAGATTTGTGAAAGAGTTCTGCCAAC  
CTGTTCTGCTGTGACAGCATCTGGCCAGACGCTGCTGCCCGAGGGCCTGACCTCAGATGCACAGTG  
TGACGACTCCTTGCGAGCTGTGAAGTACAGCTGTACTCCTGCTAC

**ACGCGT**ACGCGGCCGCTCGAGCAGAACTCATCTCAGAAGAGGATCTGGCAGCAAATGATATCCTGGATT  
ACAAGGATGACGACGATAAGGTTTAA



[View online »](#)

**Protein Sequence:** >RC216730 protein sequence  
Red=Cloning site Green=Tags(s)

MSEESDSLRTSPSVASLSENELPPPEPPPGYVCSLTEDLVTKAREELQEKPEWRLRDVQALRDMVRKEYP  
 NLSTSLDDAFLRLRARKFDYDRALQLLVNYHSCRRSWPEVFNNLKPSALKDVLASGFLTVLPHTDPRG  
 CHVVCIRPDRWIPSNYPITENIRAIYL TLEKLIQSEETQVNGIVILADYKGVSLSKASHFGPFI AKKVI  
 ILQDGFPIRIKAVHVVNEPRIFKGI FAI IKPFLKEKIANRFFLHGS DLNSLHTNLP RSILPKEYGGTAGE  
 LDTATWNAVLLASEDDFVKEFCQPV PACDSILGQTLLPEGLTSDAQCD DDLRAVKSQLYSCY

TRTRPLEQKLISEEDLAANDILDYKDDDDKV

**Chromatograms:** [https://cdn.origene.com/chromatograms/mk6385\\_h08.zip](https://cdn.origene.com/chromatograms/mk6385_h08.zip)

**Restriction Sites:** SgfI-MluI

**Cloning Scheme:**



**ACCN:** NM\_001039199

**ORF Size:** 1026 bp

**OTI Disclaimer:** The molecular sequence of this clone aligns with the gene accession number as a point of reference only. However, individual transcript sequences of the same gene can differ through naturally occurring variations (e.g. polymorphisms), each with its own valid existence. This clone is substantially in agreement with the reference, but a complete review of all prevailing variants is recommended prior to use. [More info](#)

**OTI Annotation:** This clone was engineered to express the complete ORF with an expression tag. Expression varies depending on the nature of the gene.

**Components:** The ORF clone is ion-exchange column purified and shipped in a 2D barcoded Matrix tube containing 10ug of transfection-ready, dried plasmid DNA (reconstitute with 100 ul of water).

**Reconstitution Method:**

1. Centrifuge at 5,000xg for 5min.
2. Carefully open the tube and add 100ul of sterile water to dissolve the DNA.
3. Close the tube and incubate for 10 minutes at room temperature.
4. Briefly vortex the tube and then do a quick spin (less than 5000xg) to concentrate the liquid at the bottom.
5. Store the suspended plasmid at -20°C. The DNA is stable for at least one year from date of shipping when stored at -20°C.

**RefSeq:** [NM\\_001039199.3](#)

**RefSeq Size:** 6212 bp

**RefSeq ORF:** 1029 bp

**Locus ID:** 79183

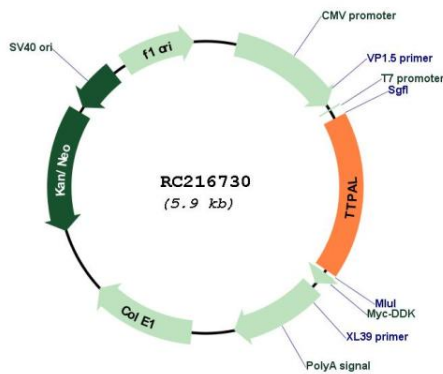
**UniProt ID:** [Q9BTX7](#)

**Cytogenetics:** 20q13.12

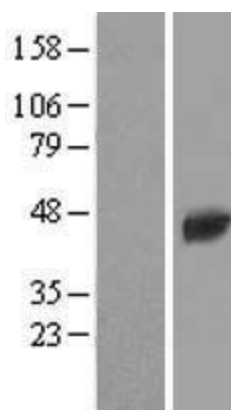
**MW:** 38.5 kDa

**Gene Summary:** May act as a protein that binds a hydrophobic ligand.[UniProtKB/Swiss-Prot Function]

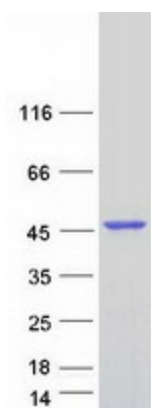
**Product images:**



Circular map for RC216730



Western blot validation of overexpression lysate (Cat# [LY422027]) using anti-DDK antibody (Cat# [TA50011-100]). Left: Cell lysates from untransfected HEK293T cells; Right: Cell lysates from HEK293T cells transfected with RC216730 using transfection reagent MegaTran 2.0 (Cat# [TT210002]).



Coomassie blue staining of purified TTPAL protein (Cat# [TP316730]). The protein was produced from HEK293T cells transfected with TTPAL cDNA clone (Cat# RC216730) using MegaTran 2.0 (Cat# [TT210002]).