

## Product datasheet for **RC216728**

### **ATG16L1 (NM\_030803) Human Tagged ORF Clone**

#### **Product data:**

Product Type:	Expression Plasmids
Product Name:	ATG16L1 (NM_030803) Human Tagged ORF Clone
Tag:	Myc-DDK
Symbol:	ATG16L1
Synonyms:	APG16L; ATG16A; ATG16L; IBD10; WDR30
Vector:	pCMV6-Entry (PS100001)
E. coli Selection:	Kanamycin (25 ug/mL)
Cell Selection:	Neomycin



[View online »](#)

**ORF Nucleotide Sequence:**

>RC216728 representing NM\_030803  
 Red=Cloning site Blue=ORF Green=Tags(s)

TTTTGTAATACGACTCACTATAGGGCGGCCGGGAATTCGTCGACTGGATCCGGTACCGAGGAGATCTGCC  
 GCC**CGGATCGCC**

ATGTCGTCGGGCCTCCGCGCCGCTGACTTCCCCGCTGGAAGCGCCACATCTCGGAGCAACTGAGGCGCC  
 GGGACCGGCTGCAGAGACAGGCGTTCGAGGAGATCATCCTGCAGTATAACAAATTGCTGGAAAAGTCAGA  
 TCTTCATTCAGTGTGGCCAGAAACTACAGGCTGAAAAGCATGACGTACCAAACAGGCACGAGATAAGT  
 CCCGGACATGATGGCACATGGAATGACAATCAGCTACAAGAAATGGCCAACTGAGGATTAAGCACCAAG  
 AGGAACTGACTGAATTACACAAGAAACGTGGGAGTTAGCTCACTGGTATTGACCTGAATAACCAAAT  
 GCAGCGGAAGGACAGGGAGATGCAGATGAATGAAGCAAAAATGCAGAATGTTTGCAGACTATCTCTGAC  
 CTGGAGACGGAGTGCCTAGACCTGCGCACTAAGCTTTGTACCTTGAAGAGCCAACCAGACCCTGAAGG  
 ATGAATATGATGCCCTGCAGATCACTTTACTGCCTTGGAGGGAAAAGTACGGAAGAGAA  
 CCAGGAGCTGGTACCAGATGGATGGCTGAGAAAGCCAGGAAGCCAATCGGCTTAATGCAGAGAATGAA  
 AAAGACTCCAGGAGGCGCAAGCCCGGCTGCAGAAAGAGCTTGCAGAAGCAGCAAAGGAACCTCTACCAG  
 TCGAACAGGATGATGACATTGAGGTCATTGTGGATGAACTTCTGATCACACAGAAGAGACCTCTCTGT  
 GCGAGCCATCAGCAGAGCAGCCACTAAGCGACTCTCGCAGCCTGCTGGAGGCTTCTGGATTCTATCACT  
 AATATCTTTGGGAGACGCTCTGTCTCTTCCCTCCAGTCCCCAGGACAATGTGGATACTCATCTGGTT  
 CTGGTAAAGAAGTGAGGGTACCAGCTACTGCCTTGTGTCTTCGATGCACATGATGGGGAAGTCAACGC  
 TGTGCAGTTCAGTCCAGGTTCCCGGTTACTGGCCACTGGAGGCATGGACCGCAGGTTAAGCTTTGGGAA  
 GTATTTGGAGAAAAATGTGAGTTCAAGGTTCCCTATCTGGCAGTAATGCAGGAATACAAGCATTGAAT  
 TTATCGATTACGGCACACACTCACGGGACACAGTGGGAAAGTGCTGTCTGCTAAGTTCTCTGGACAAT  
 GCGCGGATTGTCTCAGGAAGTACGACCGGACTCTCAAACCTCTGGGATCTACGCAGCAAAGTCTGCATAA  
 AGACAGTGTTCAGGATCCAGTTGCAATGATATTGTCTGCACAGAGCAATGTGTAATGAGTGGACATTT  
 TGACAAGAAAAATCGTTTCTGGGACATTCGATCAGAGAGCATAGTTGAGAGATGGAGCTTTGGGAAAG  
 ATTACTGCCCTGGACTTAAACCCAGAAAGGACTGAGCTCCTGAGCTGCTCCCGTATGACTTGCTAAAAG  
 TTATTGATCTCCGAACAAATGCTATCAAGCAGACATTAGTGCACCTGGGTTCAAGTGGCGCTGACTG  
 GACCAGAGTTGTCTTACGCCCTGATGGCAGTTACGTGGCGGCAGGCTCTGCTGAGGGCTCTCTGTATATC  
 TGGAGTGTCTCACAGGAAAGTGGAAAAGTTCTTTCAAAGCAGCACAGCTCATCCATCAATGCGGTGG  
 CGTGGTCGCCCTCTGGCTCGCACGTTGTAGTGTGGACAAAGGATGCAAAGCTGTCTGTGGGCACAGTA  
 C

**ACGCGT**ACGCGGCCGCTCGAGCAGAAACTCATCTCAGAAGAGGATCTGGCAGCAAATGATATCCTGGATT  
 ACAAGGATGACGACGATAAGGTTTAA

**Protein Sequence:**

>RC216728 representing NM\_030803  
 Red=Cloning site Green=Tags(s)

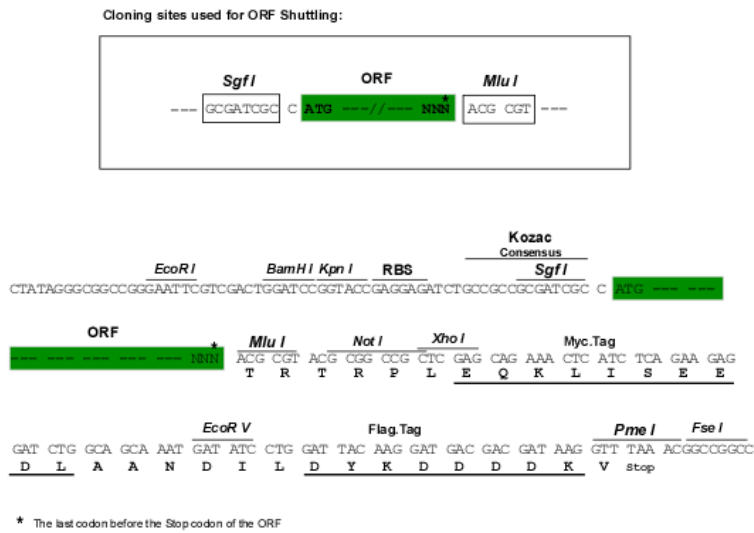
MSSGLRAADFPRWKRHISEQLRRRDRLQRQAFEEIILQYNKLLLEKSDLHSVLAQKLQAEKHDVPNRHEIS  
 PGHDGTWNDNLQEMAQLRIKHQEELTELHKRGEAQLVIDLNNQMQRKDREMQMNEAKIAECLQTISD  
 LETECLDLRKLCDLERANQTLKDEYDALQITFTALEGKLRKTTEENQELVTRWMAEKAQEANRLNAENE  
 KDSRRRQARLQKELAEAAKEPLPVEQDDIEIVDETSDHTEETSPVRAISRATKRLSQPAGLLDSIT  
 NIFGRRSVSSFPVPQDNVDTHPGSGKEVRVPATALCVFDAHDGEVNAVQFSPGSRLLATGGMDRRVKLWE  
 VFGEKCEFKGSLSGSNAGITSIEFDSAGSYLLAASNDFASRIWTVDYRLRHTLTGHSKVL SAKFLLDN  
 ARIVSGSHDRTLKLDLRSKVCIKTVFAGSSCNDIVCTEQCVMSGHFDDKIRFDWIRSESI VREMELLGK  
 ITALDLNPERTELLSCSRDILLKVIDLRTNAIKQTF SAGPFKCGSDWTRVVFSPDGSYVAAGSAEGLYI  
 WSVLTGKVEKVL SKQHSSINAVAWSPSGSHVVSVDKGGKAVLWAQY

**TRTRPLEQKLISEEDLAANDILDYKDDDDKV**

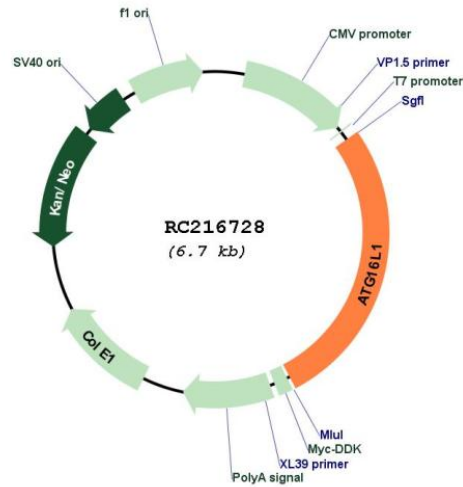
Chromatograms: [https://cdn.origene.com/chromatograms/mg3115\\_b02.zip](https://cdn.origene.com/chromatograms/mg3115_b02.zip)

Restriction Sites: SgfI-MluI

Cloning Scheme:



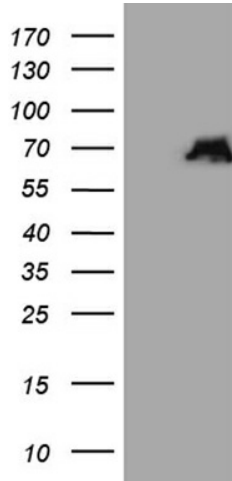
Plasmid Map:



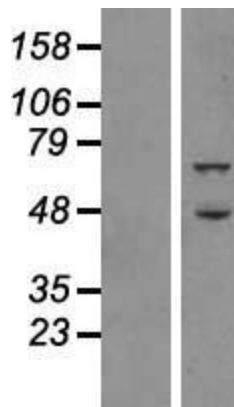
ACCN: NM\_030803

ORF Size: 1821 bp

<b>OTI Disclaimer:</b>	The molecular sequence of this clone aligns with the gene accession number as a point of reference only. However, individual transcript sequences of the same gene can differ through naturally occurring variations (e.g. polymorphisms), each with its own valid existence. This clone is substantially in agreement with the reference, but a complete review of all prevailing variants is recommended prior to use. <a href="#">More info</a>
<b>OTI Annotation:</b>	This clone was engineered to express the complete ORF with an expression tag. Expression varies depending on the nature of the gene.
<b>Components:</b>	The ORF clone is ion-exchange column purified and shipped in a 2D barcoded Matrix tube containing 10ug of transfection-ready, dried plasmid DNA (reconstitute with 100 ul of water).
<b>Reconstitution Method:</b>	<ol style="list-style-type: none"><li>1. Centrifuge at 5,000xg for 5min.</li><li>2. Carefully open the tube and add 100ul of sterile water to dissolve the DNA.</li><li>3. Close the tube and incubate for 10 minutes at room temperature.</li><li>4. Briefly vortex the tube and then do a quick spin (less than 5000xg) to concentrate the liquid at the bottom.</li><li>5. Store the suspended plasmid at -20°C. The DNA is stable for at least one year from date of shipping when stored at -20°C.</li></ol>
<b>RefSeq:</b>	<a href="#">NM_030803.7</a>
<b>RefSeq Size:</b>	3411 bp
<b>RefSeq ORF:</b>	1824 bp
<b>Locus ID:</b>	55054
<b>UniProt ID:</b>	<a href="#">Q676U5</a>
<b>Cytogenetics:</b>	2q37.1
<b>Domains:</b>	WD40
<b>MW:</b>	68.1 kDa
<b>Gene Summary:</b>	The protein encoded by this gene is part of a large protein complex that is necessary for autophagy, the major process by which intracellular components are targeted to lysosomes for degradation. Defects in this gene are a cause of susceptibility to inflammatory bowel disease type 10 (IBD10). Several transcript variants encoding different isoforms have been found for this gene.[provided by RefSeq, Jun 2010]

**Product images:**


HEK293T cells were transfected with the pCMV6-ENTRY control (Cat# [PS100001], Left lane) or pCMV6-ENTRY ATG16L1 (Cat# RC216728, Right lane) cDNA for 48 hrs and lysed. Equivalent amounts of cell lysates (5 ug per lane) were separated by SDS-PAGE and immunoblotted with anti-ATG16L1 (1:500) (Cat# [TA809570]). Positive lysates [LY410699] (100ug) and [LC410699] (20ug) can be purchased separately from OriGene.



Western blot validation of overexpression lysate (Cat# [LY410699]) using anti-DDK antibody (Cat# [TA50011-100]). Left: Cell lysates from untransfected HEK293T cells; Right: Cell lysates from HEK293T cells transfected with RC216728 using transfection reagent MegaTran 2.0 (Cat# [TT210002]).