

## Product datasheet for RC216725

### CLEC3A (NM\_005752) Human Tagged ORF Clone

#### Product data:

Product Type:	Expression Plasmids
Product Name:	CLEC3A (NM_005752) Human Tagged ORF Clone
Tag:	Myc-DDK
Symbol:	CLEC3A
Synonyms:	CLECSF1
Mammalian Cell Selection:	Neomycin
Vector:	pCMV6-Entry (PS100001)
E. coli Selection:	Kanamycin (25 ug/mL)
ORF Nucleotide Sequence:	>RC216725 ORF sequence Red=Cloning site Blue=ORF Green=Tags(s)

TTTTGTAATACGACTCACTATAGGGCGCCGGAATTCGTCGACTGGATCCGGTACCGAGGAGATCTGCC  
GCC**CGATCGCC**

ATGGCAAAGAATGGACTTGTAATTTGCATCCTGGTGATCACCTTACTCCTGGACCAGACCACCAGCCACA  
CATCCAGATTAAGCCAGGAAGCACAGCAAACGTCGAGTGAGAGACAAGGATGGAGATCTGAAGACTCA  
AATTGAAAAGCTCTGGACAGAAGTCAATGCCTTGAAGGAAATCAAGCCCTGCAGACAGTCTGTCTCCGA  
GGCACTAAAGTTCACAAGAAATGCTACCTTGTTCAGAAGTTTGAAGCATTTCATGAGGCCAATGAAG  
ACTGCATTTCAAAGGAGGAATCCTGGTTATCCCCAGGAATCCGACGAAATCAACGCCCTCCAAGACTA  
TGGTAAAAGGAGCCTGCCAGGTGCAATGACTTTTGGCTGGGCATCAATGACATGGTCACGGAAGGCAAG  
TTTGTGACGTCAACGGAATCGCTATCTCTTCTCAACTGGGACCGTACACAGCCTAACGGTGGCAAGC  
GAGAAAATGTGTCTGTCTCCCAATCAGCTCAGGGCAAGTGGAGTGATGAGGCCTGTCCGACGAGCAA  
GAGATACATATGCGAGTTCACCATCCCTCAA

**ACGCGT**ACGCGGCCGCTCGAGCAGAACTCATCTCAGAAGAGGATCTGGCAGCAAATGATATCCTGGATT  
ACAAGGATGACGACGATAAGGTTTAA

Protein Sequence:	>RC216725 protein sequence Red=Cloning site Green=Tags(s)
-------------------	--

MAKNGLVICILVITLLLDQTTSHTSRLKARKHSKRRVRDKDGLKTQIEKLWTEVNALKEIQALQTVCLR  
GTKVHKKCYLASEGLKHFHEANEDCISKGGILVIPRNSDEINALQDYGKRSLPGVNDFWLGINDMVTEGK  
FVDVNGIAISFLNWDRTQPNGGKRENCVLFQSQAQGWSDACRSKRYICEFTIPQ

**TRTRPLEQKLISEEDLAANDILDYKDDDDKV**

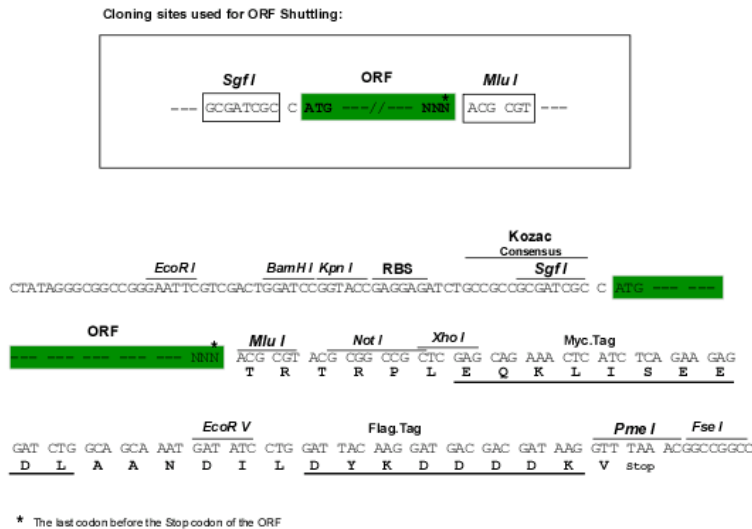


[View online »](#)

**Chromatograms:** [https://cdn.origene.com/chromatograms/mk6448\\_d05.zip](https://cdn.origene.com/chromatograms/mk6448_d05.zip)

**Restriction Sites:** SgfI-MluI

**Cloning Scheme:**



**ACCN:** NM\_005752

**ORF Size:** 591 bp

**OTI Disclaimer:** The molecular sequence of this clone aligns with the gene accession number as a point of reference only. However, individual transcript sequences of the same gene can differ through naturally occurring variations (e.g. polymorphisms), each with its own valid existence. This clone is substantially in agreement with the reference, but a complete review of all prevailing variants is recommended prior to use. [More info](#)

**OTI Annotation:** This clone was engineered to express the complete ORF with an expression tag. Expression varies depending on the nature of the gene.

**Components:** The ORF clone is ion-exchange column purified and shipped in a 2D barcoded Matrix tube containing 10ug of transfection-ready, dried plasmid DNA (reconstitute with 100 ul of water).

**Reconstitution Method:**

1. Centrifuge at 5,000xg for 5min.
2. Carefully open the tube and add 100ul of sterile water to dissolve the DNA.
3. Close the tube and incubate for 10 minutes at room temperature.
4. Briefly vortex the tube and then do a quick spin (less than 5000xg) to concentrate the liquid at the bottom.
5. Store the suspended plasmid at -20°C. The DNA is stable for at least one year from date of shipping when stored at -20°C.

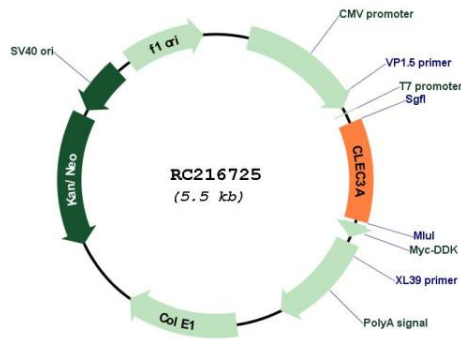
**RefSeq:** [NM\\_005752.6](#)

**RefSeq Size:** 1952 bp

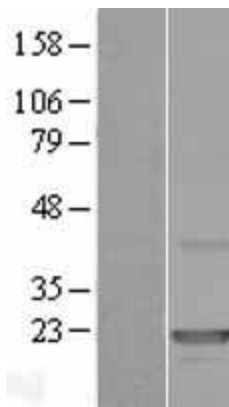
**RefSeq ORF:** 594 bp

**Locus ID:** 10143

**UniProt ID:** [O75596](#)  
**Cytogenetics:** 16q23.1  
**MW:** 22.3 kDa  
**Gene Summary:** Promotes cell adhesion to laminin-332 and fibronectin.[UniProtKB/Swiss-Prot Function]

**Product images:**


Circular map for RC216725



Western blot validation of overexpression lysate (Cat# [LY417093]) using anti-DDK antibody (Cat# [TA50011-100]). Left: Cell lysates from untransfected HEK293T cells; Right: Cell lysates from HEK293T cells transfected with RC216725 using transfection reagent MegaTran 2.0 (Cat# [TT210002]).