

Product datasheet for RC216723

Dystrophin (DMD) (NM_004011) Human Tagged ORF Clone

Product data:

Product Type:	Expression Plasmids
Product Name:	Dystrophin (DMD) (NM_004011) Human Tagged ORF Clone
Tag:	Myc-DDK
Symbol:	DMD
Synonyms:	BMD; CMD3B; DXS142; DXS164; DXS206; DXS230; DXS239; DXS268; DXS269; DXS270; DXS272; MRX85
Vector:	pCMV6-Entry (PS100001)
E. coli Selection:	Kanamycin (25 ug/mL)
Cell Selection:	Neomycin
ORF Nucleotide Sequence:	>RC216723 representing NM_004011 Red=Cloning site Blue=ORF Green=Tags(s)

TTTTGTAATACGACTCACTATAGGGCGCCGGAATTCGTCGACTGGATCCGGTACCGAGGAGATCTGCC
GCC**CGATCGCC**

ATGACTGAGATGATTTTGCTAATTTTTTTCCAGCCTATTTCTTAATGCTGTAAGGAGGCAAAAGTTGC
TTGAACAGAGCATCCAGTCTGCCAGGAGACTGAAAAATCCTTACACTTAATCCAGGAGTCCCTCACATT
CATTGACAAGCAGTTGGCAGCTTATATTGCAGACAAGGTGGACGCAGCTCAAATGCCTCAGGAAGCCAG
AAAATCCAATCTGATTTGACAAGTCATGAGATCAGTTTGAAGAAATGAAGAAACATAATCAGGGGAAGG
AGGCTGCCAAAGAGTCTGTCTCAGATTGATGTTGCACAGAAAAATTACAAGATGTCTCCATGAAGTT
TCGATTATTCCAGAAACCAGCAATTTTGGCAGCGTCTACAAGAAAGTAAAGATGATTTTAGATGAAGTG
AAGATGCACCTTGCTGCATTGGAACAAAGAGTGTGGAACAGGAAGTAGTACAGTACAGCTAAATCATT
GTGTGAACTTGTATAAAAGTCTGAGTGAAGTGAAGTCTGAAGTGGAAATGGTGATAAAGACTGGACGTCA
GATTGTACAGAAAAAGCAGACGGAAAAATCCCAAAGAACTTGTGAAAGAGTAAACAGCTTTGAAATTCAT
TATAATGAGCTGGGAGCAAAGGTAACAGAAAGAAAGCAACAGTTGGAGAAATGCTTGAATTTGCCCGTA
AGATGCGAAAGGAAATGAATGTCTTGACAGAATGGCTGGCAGCTACAGATATGGAATTGACAAAGAGATC
AGCAGTTGAAGGAATGCCTAGTAATTTGGATTCTGAAGTTGCCTGGGAAAGGCTACTCAAAAAGAGATT
GAGAAACAGAAGGTGCACCTGAAGAGATCACAGAGGTAGGAGAGGCCTTGAAAACAGTTTTGGGCAAGA
AGGAGACGTTGGTGAAGATAAACTCAGTCTTCTGAATAGTAAGTGGATAGCTGTACCTCCGAGCAGA
AGAGTGGTTAAATCTTTTGTGGAATACCAGAAACACATGGAACCTTTTGACCAGAAATGTGGACCACATC
ACAAAGTGGATCATTCAGGCTGACACACTTTTGGATGAATCAGAGAAAAAGAAACCCAGCAAAAAGAG
ACGTGCTTAAGCGTTTAAAGGCAGAAGTGAATGACATACGCCAAAGGTGGACTCTACACGTGACCAAGC
AGCAAACCTTGTGCAAACCGCGGTGACCACTGCAGGAAATTAGTAGAGCCCAATCTCAGAGCTCAAC
CATCGATTTGAGCCATTTACACAGAATTAAGACTGGAAAGGCCTCCATTCCTTTGAAGGAATTTGGAGC
AGTTTAACTCAGATATACAAAAATGCTTGAACCACTGGAGGCTGAAATTCAGCAGGGGGTGAATCTGAA
AGAGGAAGACTTCAATAAAGATATGAATGAAGACAATGAGGGTACTGTAAAAGAATTTGTTGCAAAGAGGA



[View online »](#)

GCAACTTACAACAAAGAATCACAGATGAGAGAAAGCGAGAGGAAATAAAGATAAAAACAGCAGCTGTTAC
 AGACAAAACATAATGCTCTCAAGGATTTGAGGTCTCAAAGAAGAAAAAGGCTCTAGAAATTTCTCATCA
 GTGGTATCAGTACAAGAGGCAGGCTGATGATCTCCTGAAATGCTTGGATGACATTGAAAAAAATTAGCC
 AGCCTACCTGAGCCCAGAGATGAAAGGAAAAATAAGGAAATGATCGGGAATTGCAGAAGAAGAAAGAGG
 AGCTGAATGCAGTGCCTAGGCAAGCTGAGGGCTTGTCTGAGGATGGGCGCCAATGGCAGTGGAGCCAAC
 TCAGATCCAGCTCAGCAAGCGCTGGCGGAAATGAGAGCAAATTTGCTCAGTTTCAAGACTCAACTTT
 GCACAAATTCACACTGTCCGTGAAGAAACGATGATGGTGATGACTGAAGACATGCCTTTGGAAATTTCTT
 ATGTGCCCTTCTACTTATTTGACTGAAATCACTCATGTCTCACAAGCCCTATTAGAAGTGGAAACAATCT
 CAATGCTCCTGACCTCTGTGCTAAGGACTTTGAAGATCTCTTAAAGCAAGAGGAGTCTCTGAAGAATATA
 AAAGATAGTCTACAACAAAGCTCAGGTCGGATTGACATTATTCATAGCAAGAAGACAGCAGCATTGCAAA
 GTGCAACGCTGTGAAAGGGTGAAGCTACAGGAAGCTCTCTCCAGCTTGATTTCCAATGGGAAAAAGT
 TAACAAAATGTACAAGGACCGACAAGGGCGATTTGACAGATCTGTTGAGAAATGGCGGCTTTTCATTAT
 GATATAAAGATATTTAATCAGTGGCTAACAGAAGCTGAACAGTTTCTCAGAAAGACACAAATTCCTGAGA
 ATTTGGGAACATGCTAAATACAAATGGTATCTTAAGGAACTCCAGGATGGCATTGGCAGCGGCAAACTGT
 TGTGAGAACATTGAATGCAACTGGGAAGAAATAATTCAGCAATCCTCAAAAACAGATGCCAGTATTCTA
 CAGGAAAAATTTGGGAAGCCTGAATCTGCGGTGGCAGGAGTCTGCAAACAGCTGTGAGACAGAAAAAGA
 GGCTAGAAGAACAAAAGAATATCTTGTGAGAATTTCAAAGAGATTTAAATGAATTTGTTTTATGGTTGGA
 GGAAGCAGATAACATTGCTAGTATCCCCTTGAACCTGGAAAAGAGCAGCAACTAAAAGAAAAGCTTGAG
 CAAGTCAAGTTACTGGTGAAGAGTTGCCCTGCGCCAGGGAATTTCTCAAACAATTAATGAAAATGGAG
 GACCCGTGCTTGTAAAGTCTCCATAAGCCAGAGCAAGATAAACTTAAAAAAGCTCAAGCAGAC
 AAATCTCCAGTGGATAAAGGTTTCCAGAGCTTTACCTGAGAAACAAGGAGAAATGAAAGTCAAAATAAA
 ATCTTTGGCAGCTTGAAAAAAGCTTGAAGACCTTGAAGAGCAGTTAAATCATCTGCTGTGAGTTAT
 CTCCTATTAGGAATCAGTTGAAATTTATAACCAACCAAGCAAGAGGACCATTTGACGTTGAGAAAC
 TGAATAGCAGTTCAAGCTAAACAACCGGATGTGGAAGAGATTTGTCTAAAGGGCAGCATTGTACAAG
 GAAAAACAGCCACTCAGCCAGTGAAGAGGAAGTTAGAAGATCTGAGCTCTGAGTGAAGGCGGTAACCC
 GTTTACTTCAAGAGCTGAGGGCAAAGCAGCCTGACCTAGCTCCTGGACTGACCACTATTGGAGCCTCTCC
 TACTCAGACTGTTACTCTGGTGACACAACCTGTGGTTACTAAGGAACTGCCATCTCCAACTAGAAATG
 CCATCTTCTTGATGTTGGAGGTACCTGCTCTGGCAGATTTCAACCGGCTTGGACAGAACTTACCGACT
 GGCTTTCTCTGCTTGATCAAGTTATAAAATCACAGAGGGTATGGTGGGTGACCTTGAGGATATCAACGA
 GATGATCATCAAGCAGAAGGCAACAATGCAGGATTTGGAACAGAGGCGTCCCAGTTGGAAGAACTCATT
 ACCGCTGCCAAAATTTGAAAAACAAGACCAGCAATCAAGAGGCTAGAACAATCATTACGGATCGAATTG
 AAAGAATTCAGAAATCAGTGGGATGAAGTACAAGAACACCTTCAGAACCGAGGCAACAGTTGAATGAAAT
 GTTAAAGGATTCAACACAATGGCTGGAAGCTAAGGAAGAAGCTGAGCAGGCTTAGGACAGGCCAGAGCC
 AAGCTTGAGTCATGGAAGGAGGGTCCCTATACAGTAGATGCAATCCAAAAGAAAAACACAGAAACCAAGC
 AGTTGGCCAAAGACCTCCGCCAGTGGCAGACAAATGTAGATGTGGCAATGACTTGGCCCTGAAACTTCT
 CCGGGATTATTCTGCAGATGATACCAGAAAAGTCCACATGATAACAGAGAATATCAATGCCTCTTGAGA
 AGCATTATAAAAGGGTGAAGTGAAGGAGGCTGCTTTGGAAGAACTCATAGATTACTGCAACAGTTCC
 CCCTGGACCTGGAAAAGTTTCTTGCTGGCTTACAGAAGCTGAAACAACGCAATGTCTACAGGATGC
 TACCCGTAAAGAAAGGCTCCTAGAAGACTCCAAGGGAGTAAAAGAGCTGATGAAACAATGGCAAGACCTC
 CAAGGTGAAATTTGAAGCTCACACAGATGTTTATCACAACTGGATGAAAACAGCCAAAAATCCTGAGAT
 CCCTGGAAGGTTCCGATGATGCAGTCTGTTACAAGACGTTTGGATAACATGAACCTTCAAGTGGAGTGA
 ACTTCGAAAAAGTCTCTCAACATTAGGTCCCATTGGAAGCCAGTTCTGACCAGTGAAGCGTCTGCAC
 CTTTCTCTGCAGGAACCTCTGGTGTGGCTACAGCTGAAAGATGATGAATTAAGCCGGCAGGCACCTATTG
 GAGGCGACTTTCCAGCAGTTCAGAAGCAGAACGATGTACATAGGGCCTTCAAGAGGGAATGAAAACATA
 AGAACCTGTAATCATGAGTACTCTTGAAGTGTACGAATATTTCTGACAGAGCAGCCTTTGGAAGGACTA
 GAGAACTCTACCAGGAGCCAGAGAGCTGCCTCCTGAGGAGAGAGCCAGAATGCTACTCGCTTCTAC
 GAAAGCAGGCTGAGGAGGTCAATACTGAGTGGGAAAAATGAACTGCACTCCGCTGACTGGCAGAGAAA
 AATAGATGAGACCCTTGAAGACTCCAGGAACCTCAAGAGGCCACGGATGAGCTGGACCTCAAGCTGCGC
 CAAGCTGAGGTGATCAAGGGATCCTGGCAGCCCGTGGGCGATCTCCTCATTGACTCTCTCAAGATCACC
 TCGAGAAAGTCAAGGCACTTCGAGGAGAAATGCGCCTCTGAAAGAGAACGTGAGCCACGTCAATGACCT
 TGCTCGCCAGCTTACCCTTTGGGCATTGAGCTCTCACCGTATAACCTCAGCACTCTGGAAGACCTGAAC
 ACCAGATGGAAGCTTCTGCAGGTGGCCGTGAGGACCGAGTCAGGACGCTGCATGAAGCCACAGGGACT

TTGGTCCAGCATCTCAGCACTTTCTTTCCACGTCTGTCCAGGGTCCCTGGGAGAGAGCCATCTCGCCAAA
CAAAGTGCCCTACTATATCAACCACGAGACTCAAACAACCTTGCTGGGACCATCCCAAAATGACAGAGCTC
TACCAGTCTTTAGCTGACCTGAATAATGTCAGATTCTCAGCTTATAGGACTGCCATGAAACTCCGAAGAC
TGCAGAAGGCCCTTTGCTTGGATCTCTTGAGCCTGTCAGCTGCATGTGATGCCTTGGACCAGCACAACT
CAAGCAAAATGACCAGCCATGGATATCCTGCAGATTATTAATTGTTTGACCACTATTTATGACCGCCTG
GAGCAAGAGCACAACAATTTGGTCAACGTCCCTCTCTGCGTGGATATGTGTCTGAACTGGCTGCTGAATG
TTTATGATACGGGACGAACAGGGAGGATCCGTGCTCTTTTAAAACCTGGCATCATTTCCCTGTGTAA
AGCACATTTGGAAGACAAGTACAGATACCTTTTCAAGCAAGTGGCAAGTTCAACAGGATTTTGTGACCAG
CGCAGGCTGGGCCTCCTTCTGCATGATTCTATCCAAATCCAAAGACAGTTGGGTGAAGTGCATCCTTTG
GGGCGAGTAACTTGGCCAAAGTGTCCGGAGCTGCTTCCAATTTGCTAATAATAAGCCAGAGATCGAAGC
GGCCCTCTTCTAGACTGGATGAGACTGGAACCCAGTCCATGGTGTGGCTGCCCGTCTGCACAGAGTG
GCTGCTGCAGAACTGCCAAGCATCAGGCCAAATGTAACATCTGCAAAGAGTGTCCAATCATTGGATTCA
GGTACAGGAGTCTAAAGCACTTTAATTATGACATCTGCCAAAGCTGCTTTTTTCTGGTCGAGTTGCAAA
AGGCCATAAAATGCACTATCCCATGGTGAATATTGCACTCCGACTACATCAGGAGAAGATGTTGAGAC
TTTGCCAAGGTAATAAAAAACAATTTGAAACAAAAGGTATTTTGCAGCATCCCGAATGGGCTACC
TGCCAGTGCAGACTGTCTTAGAGGGGGACAACATGGAAACTCCCGTACTCTGATCAACTCTGGCCAGT
AGATTCTGCGCCTGCCTCGTCCCCTCAGCTTTCACACGATGATACTCATTACGCATTGAACATTATGCT
AGCAGGCTAGCAGAAATGGAAAACAGCAATGGATCTTATCTAAATGATAGCATCTCTCCTAATGAGAGCA
TAGATGATGAACATTTGTTAATCCAGCATTACTGCCAAAGTTTGAACCAGGACTCCCCCTGAGCCAGCC
TCGTAGTCTGCCAGATCTTGATTTCTTAGAGAGTGAGGAAAGAGGGGAGCTAGAGAGAATCCTAGCA
GATCTTGAGGAAGAAAACAGGAATCTGCAAGCAGAATATGACCGTCTAAAGCAGCAGCACGAACATAAG
GCCTGTCCCCTGCCGTCCTCCTGAAATGATGCCACCTCTCCCAGAGTCCCCGGGATGCTGAGCT
CATTGCTGAGGCAAGCTACTGCGTCAACACAAGGCCCGCTGGAAGCCAGGATGCAAACTCTGGAAGAC
CACAATAAACAGCTGGAGTCACAGTTACACAGGCTAAGGCAGCTGCTGGAGCAACCCAGGCAGAGGCCA
AAGTGAATGGCACAACGGTGTCTCTCCTTCTACCTCTCTACAGAGGTCCGACAGCAGTACGCCTATGCT
GCTCCGAGTGGTTGGCAGTCAAACCTTCGGACTCCATGGGTGAGGAAGATCTTCTCAGTCTCCCCAGGAC
ACAAGCACAGGGTTAGAGGAGGTGATGGAGCAACTCAACAACCTTCCCTAGTTCAAGAGGAAGAATA
CCCCTGGAAGCCAATGAGAGAGGACACAATG

ACGGTACGCGGCCGCTCGAGCAGAACTCATCTCAGAAGAGGATCTGGCAGCAATGATATCCTGGATT
ACAAGGATGACGACGATAAGGTTTAA

Protein Sequence: >RC216723 representing NM_004011
 Red=Cloning site Green=Tags(s)

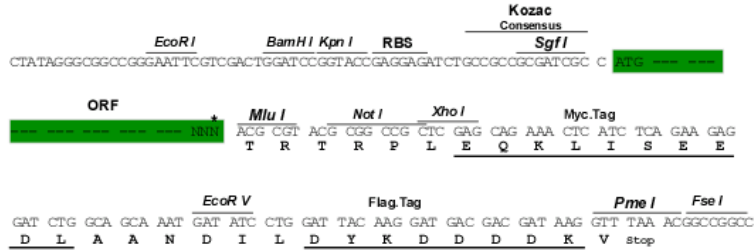
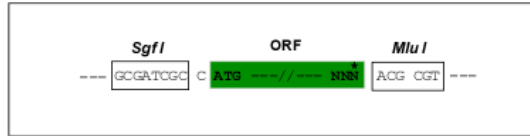
MTEMILLIFFPAYFLNAVRRQKLLLEQSIQSAQETEKSLHLIQESLTFIDKQLAAYIADKVDAAQMPQEAQ
 KIQSDLTSHEISLEEMKKHNQGKEAAQRVLSQIDVAQKKLQDVSMKFRLFQKQANFEQRLQESKMILDEV
 KMHLPALETKSVEQEVVQSQLNHCYNLYKSLSEVKSEVEMVIKTGRQIVQKKQTENPKELDERVTALKLH
 YNELGAKVTERKQQLLEKCLKLSRKMREKMNVLTEWLAATDMELTKRSAVEGMPSNLDSEVAWGKATQKEI
 EKQKVHLKSITEVGEALKTVLGKKE TLVEDKLSLLNSNWI AVTSRAEEWLNLLLEYQKHMETFQDQNV DHI
 TKWIIQADTLLDESEKKKPKQKEDVLRKLAELNDIRPKVDSTRDQAANLMANRGDHCRLKLEPQISELN
 HRFAAIASHRIKTGKASIPLKELEQFNSDIQKLLLEPLEAEIQQGVNLEEDFNKDMNEDNEGTVKELLQRG
 DNLQQRITDERKREEIKIKQQLLQTKHNALKDLRSQRRKKALEISHQWYQYKRQADDLLKCLDDIEKLA
 SLPEPRDERKIKEIDRELQKKKEELNAVRRQAEGLEDGAAMAVEPTQIQLSKRWREIESKFAQFRRLNF
 AQIHTVREETMMVMTEDMPLEISYVPSTYLTEITHVSQALLEVEQLLNAPDLCAKDFEDLQKQESLKNI
 KDSLQSSGRIDIHSHKTAALQSATPVERVKLQEQALSQLDFQWEKVNKMYKDRQGRFDRSEVKWRFFHY
 DIKIFNQWLTEAEQFLRKTQIPENWEHAKYKWLKELQDGIQGRQTVVRTL NATGEEIIQQSSKTDASIL
 QEKLGSLLNRWQEVCKQLSDRKKRLEEQKNI LSEFQRDLNEFVWLWLEEADNIASIPLEPGKEQQLKEKLE
 QVKLLVEELPLRQGILKQLNETGGPVLVSAPISPEEQDKLENKQTNLQWIKVSRALPEKQGEIEAQIK
 DLGQLEKKLEDLEQLNHL LLLWLSPIRNQLEIYNQPNQEGPFDVQETEIAVQAKQPDVEEILSKGQHLK
 EKPATQPVKRLLEDLSSEWKA VNRLLQELRAKQPD LAPGLTTIGASPTQTVTLVTQPVVTKETAISKLEM
 PSSLMLEVPALADFNRAWTELTDWL SLLDQV IKSQRVMVGDLEDINEMI IKQKATMQDLEQRRPQLEELI
 TAAQNLKNKTSNQEARTIITDRIERIQNQWDEVQEHQNRRLQNLNEMIKDSTQWLEAKEEAEQVLGQARA
 KLESWKEGPTYVD AIQKKITETKQLAKDLRQWQTNVDVANDLALKLLRDYSADDTRKVMITENINASWR
 SIHKRVSEREAAL EETHRLLQQFPLDLEKFLAWL TEAETTANVLQDATRERLLED SKGVKELMKQWQDL
 QGEIEAHTDVYHNL DENSQKILRSLEGSDDAVLLQRRLDNMNFKWSLELRKSLNIRSHLEASSDQWKRLH
 LSLQELLVWLQLKDEL SRQAPIGGDFPAVQKQNDVHRAFKRELKTKPEVIMSTLETVRIFL TEQPLEGL
 EKLYQEPRELPEERAQNVTRLLRQKAEVNTWEKLNLSADWQRKIDETLERLQELQEATDEL DLKLR
 QAEVIKGSWQPVGDLLIDSLQDHLEKVKALRGEIAPLKENVSHVNDLARQLTTLGIQLSPYNLSTLEDLN
 TRWKLLQVAVEDRVRQLHEHRDFGPASQHF LSTSVQGPWERAISPKNVPYYINHETQTTCDWHPKMTL
 YQSLADLNNVRF SAYRTAMKLRRLQKALCLDLLSL SAACDALDQHNLKQNDQPM DILQIINCLTTIYDRL
 EQEHNLLVNVPLCVMCLN WLLNVYDTGRTGRIRVLSFKTGIISLCKAHLEDKYRYL FKQVASSTGFCQDQ
 RRLGLLLHDSIQIPRQLGEVASFGGSNIEPSVRSCFQFANNKPEIEAALFLDWMRLEPQSMVWLPVLRHV
 AAETAKHQAKCNICKECPIIGFRYRSLKHFNYD ICQSCFFSGRVAKGHKMHPMVEYCTPTTSGEDVDR
 FAKVLKNKFRTRKRYFAKHPRMGYLPVQTVLEGDNMETPVTLINFWPVDSAPASSPQLSHDDTHSRIEHYA
 SRLAEMENSNGSYLND SISPNE SIDDEHLLIQHYCQSLNQDSPLSQPRSPAQILISLESEERGELE RILA
 DLEENRNLQAEYDR LKQHQHEHGLSPLSPPEMPTSPQSPRDAELIAEAKLLRQHKGRLEARMQI LED
 HNKQLESQHLRQLLEQPQAEAKVNGTTVSSPSTSLQRS DSSQPMLLRVVGSTSDSMGEEDLLSPPQD
 TSTGLEEVMEQLNNSFPSSRGRNTPGKPMREDTM

TRTRPLEQKLI SEEDLAANDILDYKDDDDKV

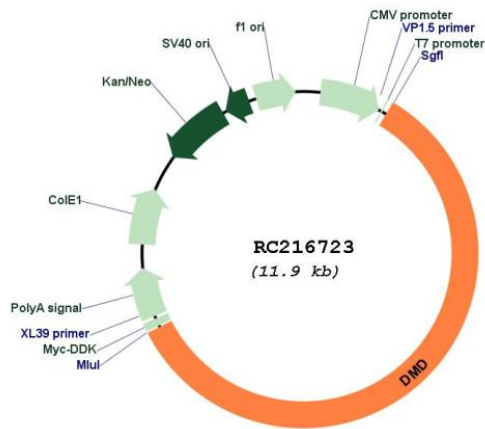
Restriction Sites: SgfI-MluI

Cloning Scheme:

Cloning sites used for ORF Shuttling:



* The last codon before the Stop codon of the ORF

Plasmid Map:


ACCN: NM_004011

ORF Size: 7032 bp

OTI Disclaimer: The molecular sequence of this clone aligns with the gene accession number as a point of reference only. However, individual transcript sequences of the same gene can differ through naturally occurring variations (e.g. polymorphisms), each with its own valid existence. This clone is substantially in agreement with the reference, but a complete review of all prevailing variants is recommended prior to use. [More info](#)

OTI Annotation: This clone was engineered to express the complete ORF with an expression tag. Expression varies depending on the nature of the gene.

Components: The ORF clone is ion-exchange column purified and shipped in a 2D barcoded Matrix tube containing 10ug of transfection-ready, dried plasmid DNA (reconstitute with 100 ul of water).

Reconstitution Method:	<ol style="list-style-type: none">1. Centrifuge at 5,000xg for 5min.2. Carefully open the tube and add 100ul of sterile water to dissolve the DNA.3. Close the tube and incubate for 10 minutes at room temperature.4. Briefly vortex the tube and then do a quick spin (less than 5000xg) to concentrate the liquid at the bottom.5. Store the suspended plasmid at -20°C. The DNA is stable for at least one year from date of shipping when stored at -20°C.
RefSeq:	NM_004011.3 , NP_004002.2
RefSeq Size:	9771 bp
RefSeq ORF:	7035 bp
Locus ID:	1756
UniProt ID:	P11532
Cytogenetics:	Xp21.2-p21.1
Protein Pathways:	Arrhythmogenic right ventricular cardiomyopathy (ARVC), Dilated cardiomyopathy, Hypertrophic cardiomyopathy (HCM), Viral myocarditis
MW:	271.4 kDa
Gene Summary:	This gene spans a genomic range of greater than 2 Mb and encodes a large protein containing an N-terminal actin-binding domain and multiple spectrin repeats. The encoded protein forms a component of the dystrophin-glycoprotein complex (DGC), which bridges the inner cytoskeleton and the extracellular matrix. Deletions, duplications, and point mutations at this gene locus may cause Duchenne muscular dystrophy (DMD), Becker muscular dystrophy (BMD), or cardiomyopathy. Alternative promoter usage and alternative splicing result in numerous distinct transcript variants and protein isoforms for this gene. [provided by RefSeq, Dec 2016]