

Product datasheet for RC216722

ITGA11 (NM_001004439) Human Tagged ORF Clone

Product data:

Product Type:	Expression Plasmids
Product Name:	ITGA11 (NM_001004439) Human Tagged ORF Clone
Tag:	Myc-DDK
Symbol:	ITGA11
Synonyms:	HsT18964
Mammalian Cell Selection:	Neomycin
Vector:	pCMV6-Entry (PS100001)
E. coli Selection:	Kanamycin (25 ug/mL)
ORF Nucleotide Sequence:	>RC216722 representing NM_001004439 Red=Cloning site Blue=ORF Green=Tags(s)

TTTTGTAATACGACTCACTATAGGGCGGCCGGAATTCGTCGACTGGATCCGGTACCGAGGAGATCTGCC
GCC**CGATCGCC**

ATGGACCTGCCAGGGGCTGGTGGTGGCTGGGCGCTCAGCCTGTGGCCAGGGTTCACGGACACCTTCA
ACATGGACACCAGGAAGCCCCGGGTCATCCCTGGCTCCAGGACCGCTTCTTTGGCTACACAGTGCAGCA
GCACGACATCAGTGGCAATAAGTGGCTGGTCGTGGGCGCCCCACTGGAAACCAATGGCTACCAGAAGACG
GGAGACGTGTACAAGTCCAGTATCCACGGAACTGCACAAACTCAACTGGGAAGGGTCAACCTGT
CCAACGTGTCGAGCGGAAAGACAACATGCGCCTCGGCCCTTAGTCTCGCCACCAACCCCAAGGACAACAG
CTTCTGGCTGCAGCCCCCTCTGGTCTCATGAGTGTGGGAGCTCCTACTACACCACAGGGATGTGTTC
AGAGTCAACTCCAATTCAAGTTCTCCAAGACCGTGGCCCCAGCTCTCCAAGGTGCCAGACCTACATGG
ACATCGTCATTGTCTGGATGGCTCCAACAGCATCTACCCCTGGGTGGAGTTTCAGCACTTCTCTATCAA
CATCTGAAAAAGTTTTACATTGGCCCAGGGCAGATCCAGGTTGGAGTTGTGCAGTATGGCGAAGATGTG
GTGCATGAGTTTCACTCAACGACTACAGGTCTGTAAAAGATGTGGTGGAAAGCTGCCAGCCACATTGAGC
AGAGAGGAGGAACAGAGACCCGGACGGCATTGGCATTGAATTTGCACGCTCAGAGGCTTCCAGAAGGG
TGGAAGGAAAGGACCAAGAAGGTGATGATTGTATCACAGATGGGGAGTCCCACGACAGCCAGACCTG
GAGAAGGTGATCCAGCAAAGCGAAAGAGACAACGTAACAAGATATGCGGTGGCCCTCTGGGCTACTACA
ACCGCAGGGGATCAATCCAGAACTTTTCTAAATGAAATCAAATACATCGCCAGTGACCCCTGATGACAA
GCACTTCTTCAATGTCAGTATGAGGCTGCCTTGAAGGACATTGTCGATGCCCTGGGGGACAGAATCTTC
AGCCTGGAAGGCACCAACAAGAACGAGACCTCCTTTGGGCTGGAGATGTCACAGACGGGCTTTCTCTCGC
ACGTGGTGGAGGATGGGTTCTGCTGGGAGCCGTCGGTGCCTATGACTGGAATGGAGCTGTGCTAAAGGA
GACGAGTCCCGGAAGGTCATTCTCTCCGCGAGTCTACCTGAAAGAGTTCCCCGAGGAGCTCAAGAAC
CATGGTGCATACCTGGGTACACAGTACATCGGTCGTCTCCAGGCAGGGGCGGGTGTACGTGGCCG
GAGCCCCCGGTTCAACCACACGGGCAAGGTCATCCTGTTACCATGCACAACAACCGGAGCCTCACCAT
CCACCAGGCTATGCGGGCCAGCAGATAGGCTTACTTTGGGAGTGAATCACCTCGGTGGACATCGAC



[View online »](#)

GGCGACGGCGTGACTGATGTCCTGCTGGTGGGCGCACCCATGTA CTTC AACGAGGGCCGTGAGCGAGGCA
AGGTGTACGTCTATGAGCTGAGACAGAACCTGTTTGTATAACGGAACGCTAAAGGATTCACACAGTTA
CCAGAATGCCCGATTTGGGTCTCCATTGCCTCAGTTCGAGACCTCAACCAGGATTCCTACAATGACGTG
GTGGTGGGAGCCCCCTGGAGGACAACCACGCAGGAGCCATCTACATCTCCACGGCTCCGAGGGCAGCA
TCCTGAAGACACCTAAGCAGAGAATCACAGCCTCAGAGCTGGCTACCGGCCTCCAGTATTTGGCTGCAG
CATCCACGGGCAATTGGACCTCAATGAGGATGGGCTCATCGACCTGGCAGTGGGAGCCCTTGGCAACGCT
GATTTCTGTGGTCCCGCCAGTGGTTCAGATCAATGCCAGCCTCCACTTTGAGCCATCCAAGATCAACA
TCTTCCACAGAGACTGCAAGCGCAGTGGCAGGGATGCCACCTGCCTGGCCGCTTCTCTGCTTCACGCC
CATCTTCTGGCACCCCATTTCCAAACAACA ACTGTTGGCATCAGATACAACGCCACCATGGATGAGAGG
CGGTATACACCGAGGGCCACCTGGACGAGGGCGGGGACCGATTACCAACAGAGCCGTA CTGCTCTCT
CCGGCCAGGAGCTCTGTGAGCGGATCAACTTCCATGTCTGGACACTGCTGACTACGTGAAGCCAGTGAC
CTTCTCAGTCGAGTATCCCTGGAGGACCCTGACCATGGCCCATGTGGACGACGGCTGGCCACCACT
CTCAGAGTCTCGGTGCCCTTCTGGAACGGCTGCAATGAGGATGAGCACTGTGCCCTGACCTTGTGTTGG
ATGCCCGAGTGACCTGCCACGGCCATGGAGTACTGCCAGAGGGTGTGAGGAAGCCTGCGCAGGACTG
CTCCGCATACACGCTGTCTTCGACACCACAGTCTTCATCATAGAGAGCACACGCCAGCGAGTGGCGGTG
GAGGCCACACTGGAGAACAGGGGCGAGAAGCCTACAGCACGGTCTAAATATCTCGCAGTCAGCAAACC
TGCAGTTTGCCAGCTTGATCCAGAAGGAGGACTCAGACGGTAGCATTGAGTGTGTGAACGAGGAGAGGAG
GCTCCAGAAGCAAGTCTGCAACGTGAGTATCCCTTCTCCGGGCCAAGGCCAAGGTGGCTTCCGCTCT
GATTTTGAGTTCAGCAAATCCATCTTCTACACCACCTGGAGATCGAGCTCGCTGCAGGCAGTGACAGTA
ATGAGCGGGACAGCACC AAGGAAGACAACGTGGCCCCCTTACGCTTCCACCTCAAATACGAGGCTGACGT
CCTCTTACCAGGAGCAGCAGCCTGAGCCACTACGAGGTCAAGCCCAACAGCTCGCTGGAGAGATACGAT
GGTATCGGGCCTCCCTTTCAGCTGCATCTTCAGGATCCAGA ACTTGGGCTTGTCCCATCCACGGGATGA
TGATGAAGATCACCATTCCATCGCCACCAGGAGCGGCAACCGCCTACTGAAGCTGAGGGACTTCTCAG
GGACGAGGCGAACACGTCTGTAACATCTGGGGCAATAGCACTGAGTACCGGCCACCCCACTGGAGGAA
GACTTGGCTCGTCTCCACAGCTGAATCACAGCAACTCTGATGTCGTCTCCATCAACTGCAATATACGGC
TGGTCCCCAACCAAGAAAATCAATTTCCATCTACTGGGAACTGTGGTTGAGGTCCCTAAAAGCACTCAA
GTACAAATCCATGAAAATCATGGTCAACGCAGCCTTGCAGAGGCAGTTCACAGCCCTTCTCTCCGT
GAGGAGGATCCCAGCCGAGATCGTGTGAGATCTCCAAGCAAGAGGACTGGCAGGTCCCATCTGGA
TCATTGTAGGCAGCACCTGGGGGCTCTACTGCTGGCCCTGCTGGTCTGGCACTGTGGAAGCTCGG
CTTCTTTAGAAGTGCCAGGCGCAGGAGGGAGCCTGGTCTGGACCCACCCCAAGTCTGGAG

ACGCGTACGCGGCCGCTCGAGCAGAACTCATCTCAGAAGAGGATCTGGCAGCAAATGATATCTGGATT
ACAAGGATGACGACGATAAGGTTTAA

Protein Sequence: >RC216722 representing NM_001004439
 Red=Cloning site Green=Tags(s)

```
MDLPRGLVVAWALSLWPGFTDTFNMDTRKPRVIPGSRTAFFGYTVQQHDISGNKWL VVGAPLETNGYQKT
GDVYKCPVIHGNETKLNLRVTL SNVSRKDNMRLGLSLATNPKDNSFLACSPLWSHECGSSYYTTGMCS
RVNSNFRFSKTVAPALQRCQTYMDIVIVLDGSNSIYPWVEVQHFLINILKKFYIGPGQIQVGVVQYGEDV
VHEFHLDYRSVKDVVEAASHIEQRGGTETRTAFGIEFARSEAFQKGGRKGAKKVMIVITDGESHDSPDL
EKVIQQSERDNVTRYAVAVLGYNRRGINPETFLNEIKYIASDPDDKHFNVNDEAALKDIVDALGDRIF
SLEGTNKNETSFGLEMSQTGFSSHVEDGVLLGAVGAYDWN GAVLKETSAGKVIPLRESYLKEFPEELKN
HGAYLGYVTVSVYSSRQGRVYVAGAPRFNHTGK VILFTMHNRSLSLTIHQAMRQQIGSYFGSEITSVDID
GDGVTDLVLLVGAPMYFNEGRERKGVVYVELRQNL FVYNGTLKDSHSYQNARFGSSIASVRDLNQDSYNDV
VVGAPLEDNHAGAIYIFHGFGRSILKTPKQRITASELATGLQYFGCSIHGQLDLNEDGLIDLAVGALGNA
VILWSRPVVQINASLHFEPKINIFHRDCKRSGRDATCLA AFLCFPIFLAPHFQTTTVGIRYNATMDER
RYTPRAHLDEGGDRFTNRAVLLSSGQELCERINFHVLDTADYVKPVTF SVEYSLEDPDHGPMDDGWPTT
LRVSVPFWNGCNEDEHCVPDLVLDARSDLP TAMEYCVRLRKAQDCSAYTLSFDTTVFIIESTRQRVAV
EATLENRGENAYSTVLNISQSANLQFASLIQKEDSDGSI ECVNEERRLQKQVCNVSYPFFRAKAKVAFRL
DFEFSKSI FLHHLIEI LAAGSDSNERDSTKEDNVAPLRFHLKYEADVLFTRSSSLSHYEVKPNSSSLERYD
GIGPPFSCIFRIQNLGLFPIHGMMKITIPIATRSGNRLLKLRDFLTDEANTSCNIWGNSTEYRPTPVEE
DLRRAPQLNHSNSDVVSINCNIRLVPNQEIFHLLGNLWLRSLKALKYKSMKIMVNAALQRQFHSPFIFR
EEDPSRQIVFEISKQEDWQVPIWIIVGSTLG LLLLALLVLALWKLGFFRSARRRRREPGLDPTPKVLE
```

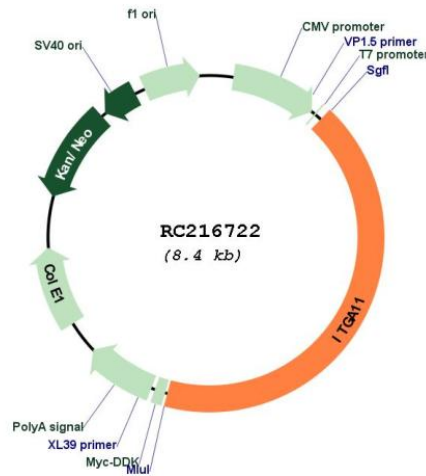
TRTRPLEQKLISEEDLAANDILDYKDDDDKV

Chromatograms: https://cdn.origene.com/chromatograms/mk8001_h10.zip

Restriction Sites: SgfI-MluI

Cloning Scheme:



Plasmid Map:


ACCN: NM_001004439

ORF Size: 3564 bp

OTI Disclaimer: The molecular sequence of this clone aligns with the gene accession number as a point of reference only. However, individual transcript sequences of the same gene can differ through naturally occurring variations (e.g. polymorphisms), each with its own valid existence. This clone is substantially in agreement with the reference, but a complete review of all prevailing variants is recommended prior to use. [More info](#)

OTI Annotation: This clone was engineered to express the complete ORF with an expression tag. Expression varies depending on the nature of the gene.

Components: The ORF clone is ion-exchange column purified and shipped in a 2D barcoded Matrix tube containing 10ug of transfection-ready, dried plasmid DNA (reconstitute with 100 ul of water).

Reconstitution Method:

1. Centrifuge at 5,000xg for 5min.
2. Carefully open the tube and add 100ul of sterile water to dissolve the DNA.
3. Close the tube and incubate for 10 minutes at room temperature.
4. Briefly vortex the tube and then do a quick spin (less than 5000xg) to concentrate the liquid at the bottom.
5. Store the suspended plasmid at -20°C. The DNA is stable for at least one year from date of shipping when stored at -20°C.

RefSeq: [NM_001004439.2](#)

RefSeq Size: 5035 bp

RefSeq ORF: 3567 bp

Locus ID: 22801

UniProt ID: [Q9UKX5](#)

Cytogenetics: 15q23

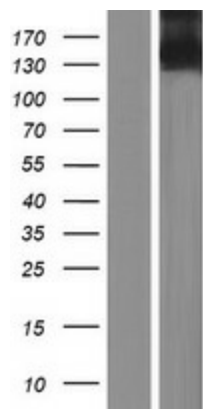
Protein Families: Druggable Genome, Transmembrane

Protein Pathways: Arrhythmogenic right ventricular cardiomyopathy (ARVC), Dilated cardiomyopathy, ECM-receptor interaction, Focal adhesion, Hypertrophic cardiomyopathy (HCM), Regulation of actin cytoskeleton

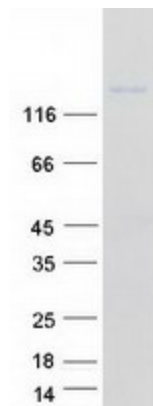
MW: 133.47 kDa

Gene Summary: This gene encodes an alpha integrin. Integrins are heterodimeric integral membrane proteins composed of an alpha chain and a beta chain. This protein contains an I domain, is expressed in muscle tissue, dimerizes with beta 1 integrin in vitro, and appears to bind collagen in this form. Therefore, the protein may be involved in attaching muscle tissue to the extracellular matrix. Alternative transcriptional splice variants have been found for this gene, but their biological validity is not determined. [provided by RefSeq, Jul 2008]

Product images:



Western blot validation of overexpression lysate (Cat# [LY423752]) using anti-DDK antibody (Cat# [TA50011-100]). Left: Cell lysates from untransfected HEK293T cells; Right: Cell lysates from HEK293T cells transfected with RC216722 using transfection reagent MegaTran 2.0 (Cat# [TT210002]).



Coomassie blue staining of purified ITGA11 protein (Cat# [TP316722]). The protein was produced from HEK293T cells transfected with ITGA11 cDNA clone (Cat# RC216722) using MegaTran 2.0 (Cat# [TT210002]).