

Product datasheet for **RC216709**

PAX1 (NM_006192) Human Tagged ORF Clone

Product data:

Product Type:	Expression Plasmids
Product Name:	PAX1 (NM_006192) Human Tagged ORF Clone
Tag:	Myc-DDK
Symbol:	PAX1
Synonyms:	HUP48; OFC2
Mammalian Cell Selection:	Neomycin
Vector:	pCMV6-Entry (PS100001)
E. coli Selection:	Kanamycin (25 ug/mL)



[View online »](#)

ORF Nucleotide Sequence:

>RC216709 representing NM_006192
 Red=Cloning site Blue=ORF Green=Tags(s)

TTTTGTAATACGACTCACTATAGGGCGGCCGGAATTCGTCGACTGGATCCGGTACCGAGGAGATCTGCC
 GCC**CGGATCGCC**

ATGGAGCAGCGTATGGCGAGGTGAACCACTGGCGCGTGTTCGTCAACGGCCGCCCTGCCAACG
 CCATCCGCTTGGCATTGTGGAGCTGGCGCAGCTGGGCATCCGACCCTGTGACATCAGTCGGCAGCTCCG
 CGTATCCACGGCTGCGTGAGCAAGATCCTGGCGCGCTACAACGAGACCGGCTCCATTCTGCCCGGGCC
 ATCGGGGGGAGCAAGCCCGCGTCACTACTCCAACTGGTCAAGCACATCCGGGACTACAAGCAAGGAG
 ACCCTGGCATCTTGCCTGGGAGATCCGCGACCGGCTGCTGGCCGACGGCGTCTGTGACAAGTAAATGT
 GCCTTCGGTGAGCTCCATCAGCCGCATCCTGCGCAACAAGATCGGCAGCCTGGCGCAGCCCGGACCGTAC
 GAGGCAAGTAAGCAGCCGCGTGCAGCCTACGCTGCCCTACAACCACATCTACCAGTACCCTACCCCA
 GTCCCGTGTCCCGACGGGCGCAAGATGGGCAGCCACCCGGGGTCCCGGGCACGGCGGGCCACGTCAG
 CATCCCGCGCTCATGGCCCTCGGCACACTCGGTACGAAACATCCTGGGCATCCGGACGTTTATGGAGCAA
 ACAGGGGGCCCTGGCTGGGAGCGAAGGCACCGCTTACTCTCCCAAGATGGAAGACTGGGCCGCGTGAACC
 GCACGGCCTTCCCGCCACCCCGCAGTGAATGGGCTAGAGAACTGCCTTAGAGGCAGACATTAATA
 CACTCAGTCGGCTCCACCTCTCTGCGTGGCGGCTTTCTCCCGCCTGCGCCTACCCGGCCTCCAAC
 CAGCACGGCGGTACAGCGCCCCGGGCGGGCTACCTCGCCCCGGGCCCGCTGGCCGCTGCGCAAG
 GTCCTCTCTGGCGCCCCCGGGCGGGCTAGCTGTGCATGGCGGGAACTCGCGGCAGCAATGACCTT
 CAAGCATCCAGCCGAGAAGGAAGCCTCCAGCTCCGGCAGCAAGGCCCGGACGCCCTCAGTAGCTTAC
 ACGGACTGCCCATCCCGCCTCGACCTCCTAGGGCAGCTCTCCCGGACCCGAGCCCGGAGGGAACGGC
 AGCGGACCCGGGCGCACAGGTCTGCGCGGCGGCCCGCAATCGGCACGGGCAGGATCGGAGGACTCGC
 GGAGGAGGAAGCCAGTGCAGGCCCGGGTGCACGCCAGCCAGCCCGAGCCCGAGCCCGAGCCCTGCCTCTGG
 CCGGACCCACCACACTTCCTTTATTGGTCTGGGTTTTTAGGCTTCTGAACTTGGGTTT

ACGCGTACGCGGCCGCTCGAGCAGAACTCATCTCAGAAGAGGATCTGGCAGCAATGATATCCTGGATT
 ACAAGGATGACGACGATAAGGTTTAA

Protein Sequence:

>RC216709 representing NM_006192
 Red=Cloning site Green=Tags(s)

MEQTYGEVNQLGGVFVNGRPLPNAIRLRIVELAQLGIRPCDISRQLRVSHGCVSKILARYNETGSILPGA
 IGGSKPRVTTPNVVKHIRDYKQDGPFIWEIRDRLADGVCDKYNVPSVSSISRILRNKIGSLAQPGPY
 EASKQPPSQPTLPYNHIYQYPSPVSPGTAKMGSHPGVPGTAGHVSIPRSWPSAHSVSNILGIRTFMEQ
 TGALAGSEGTAYSPKMEDWAGVNRATFPATPAVNGLEKPALEADIKYTQSASTLSAVGGFLPACAYPASN
 QHGVYSAPGGYLAPGPPWPPAQGPPLAPPGAGVAVHGGELAAAMTFKHPSREGSLPAPAARPRTPSVAY
 TDCPSRPRPPRGSSPRTRRERQADPGAQVCAAPAIIGTRIGGLAEELASAGPRGARPASPQAQPCW
 PDPPHFLYWSGFLGFLSELGF

TRTRPLEQKLISEEDLAANDILDYKDDDDKV

Chromatograms:

https://cdn.origene.com/chromatograms/mk6098_d11.zip

Restriction Sites:

Sgfl-Mlul

Cloning Scheme:



ACCN: NM_006192

ORF Size: 1320 bp

OTI Disclaimer: The molecular sequence of this clone aligns with the gene accession number as a point of reference only. However, individual transcript sequences of the same gene can differ through naturally occurring variations (e.g. polymorphisms), each with its own valid existence. This clone is substantially in agreement with the reference, but a complete review of all prevailing variants is recommended prior to use. [More info](#)

OTI Annotation: This clone was engineered to express the complete ORF with an expression tag. Expression varies depending on the nature of the gene.

Components: The ORF clone is ion-exchange column purified and shipped in a 2D barcoded Matrix tube containing 10ug of transfection-ready, dried plasmid DNA (reconstitute with 100 ul of water).

- Reconstitution Method:**
1. Centrifuge at 5,000xg for 5min.
 2. Carefully open the tube and add 100ul of sterile water to dissolve the DNA.
 3. Close the tube and incubate for 10 minutes at room temperature.
 4. Briefly vortex the tube and then do a quick spin (less than 5000xg) to concentrate the liquid at the bottom.
 5. Store the suspended plasmid at -20°C. The DNA is stable for at least one year from date of shipping when stored at -20°C.

RefSeq: [NM_006192.2](#), [NP_006183.1](#)

RefSeq Size: 2771 bp

RefSeq ORF: 1605 bp

Locus ID: 5075

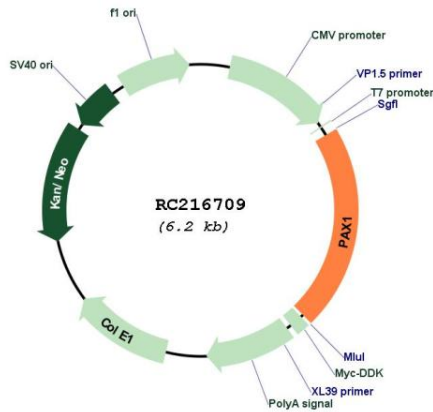
UniProt ID: [P15863](#)

Cytogenetics: 20p11.22

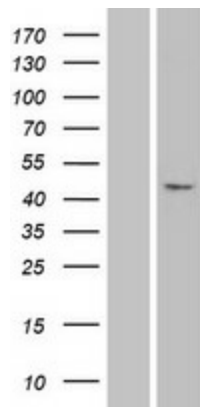
MW: 46.1 kDa

Gene Summary: This gene is a member of the paired box (PAX) family of transcription factors. Members of the PAX family typically contain a paired box domain and a paired-type homeodomain. These genes play critical roles during fetal development. This gene plays a role in pattern formation during embryogenesis and may be essential for development of the vertebral column. This gene is silenced by methylation in ovarian and cervical cancers and may be a tumor suppressor gene. Mutations in this gene are also associated with vertebral malformations. [provided by RefSeq, Mar 2012]

Product images:



Circular map for RC216709



Western blot validation of overexpression lysate (Cat# [LY401864]) using anti-DDK antibody (Cat# [TA50011-100]). Left: Cell lysates from untransfected HEK293T cells; Right: Cell lysates from HEK293T cells transfected with RC216709 using transfection reagent MegaTran 2.0 (Cat# [TT210002]).