

Product datasheet for **RC216698**

CCRK (CDK20) (NM_012119) Human Tagged ORF Clone

Product data:

Product Type:	Expression Plasmids
Product Name:	CCRK (CDK20) (NM_012119) Human Tagged ORF Clone
Tag:	Myc-DDK
Symbol:	CCRK
Synonyms:	CCRK; CDCH; P42; PNQALRE
Mammalian Cell Selection:	Neomycin
Vector:	pCMV6-Entry (PS100001)
E. coli Selection:	Kanamycin (25 ug/mL)
ORF Nucleotide Sequence:	>RC216698 representing NM_012119 Red=Cloning site Blue=ORF Green=Tags(s)

TTTTGTAATACGACTCACTATAGGGCGGCCGGAATTCGTCGACTGGATCCGGTACCGAGGAGATCTGCC
GCC**CGATCGCC**

ATGGACCACTACTGCATCCTGGGCCGCATCGGGGAGGGCGCCACGGCATCGTCTTCAAGGCCAAGCAGC
TGGAGACTGGCGAGATAGTTGCCCTCAAGAAGGTGGCCCTAAGGCGGTTGGAAGACGGCTTCCCTAACCA
GGCCCTGCGGGAGATTAAGGCTCTGCAGGAGATGGAGACAATCAGTATGTGGTACAACGAAGGCTGTG
TCCCACACGGTGGAGGCTTTGTGCTGGCCTTTGAGTTTCATGCTGTCGGATCTGGCCGAGGTGGTGC
ATGCCAGAGGCCACTAGCCAGGCACAGGTCAAGAGCTACCTGCAGATGCTGCTCAAGGTTGTCGCCTT
CTGCCATGCCAACAACTTGTACATCGGGACCTGAAACCTGCCAACCTGCTCATCAGCGCCTCAGGCCAG
CTCAAGATAGCGGACTTTGGCCTGGCTCGAGTCTTTTCCCAGACGGCAGCCGCCTCTACACACACCAGG
TGGCCACCAGGTCTGTGGGCTGCATCATGGGGAGCTGTTGAATGGGTCCCCCTTTTCCCGGGCAAGAA
CGATATTGAACAGCTTTGCTATGTGCTTCGCATCTTGGGCACCCCAAACCTCAAGTCTGGCCGGAGCTC
ACTGAGCTGCCGGACTACAACAAGATCTCCTTTAAGGAGCAGGTGCCATGCCCTGGAGGAGGTGCTGC
CTGACGCTCTCCCCAGGCATTGGATCTGCTGGGTCAATTCCTTCTCTACCCTCCTACCAGCGCATCGC
AGCTTCCAAGGCTCTCCTCCATCAGTACTTCTTACAGCTCCCTGCCTGCCATCCATCTGAGCTGCCG
ATTCTCAGCGTCTAGGGGGACCTGCCCAAGGCCATCCAGGGCCCCCACATCCATGACTTCCACG
TGGACCGCCTTTGAGGAGTCTGTTGAACCCAGAGCTGATTGGCCCTTCATCCTGGAGGGG

ACGCGTACGCGGCCGCTCGAGCAGAACTCATCTCAGAAGAGGATCTGGCAGCAAATGATATCCTGGATT
ACAAGGATGACGACGATAAGGTTTAA



[View online »](#)

Protein Sequence: >RC216698 representing NM_012119
Red=Cloning site Green=Tags(s)

MDQYCILGRIGEGAHGIVFKAKHVETGEIVALKKVALRRLEDGFPNQALREIKALQEMEDNQYVVQLKAV
 FPHGGGFVLAFFMLSDLAEVVRHAQRPLAQAQVKSYLQMLLKGVAFCHANNIVHRDLKPANLLISASGQ
 LKIAADFLARVSPDGSRLYTHQVATRSVGCIMGELLNGSPLFPKNDIEQLCYVLRILGTPNPQVWPEL
 TELPDYNKISFKEQVPMPLLEEVLDPVSPQALDLLGQFLLYPPHQRIAASKALLHQYFFFTAPLPAHPSELP
 IPQRLGGPAPKAHPGPPHIDHFVDRPLEESLLNPELIRPFILEG

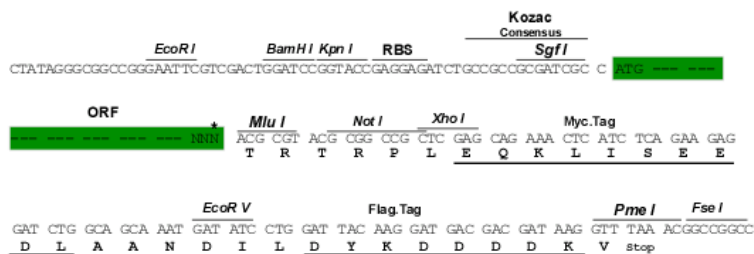
TRTRPLEQKLISEEDLAANDILDYKDDDDKV

Chromatograms: https://cdn.origene.com/chromatograms/mg4251_f01.zip

Restriction Sites: SgfI-MluI

Cloning Scheme:

Cloning sites used for ORF Shuttling:



* The last codon before the Stop codon of the ORF

ACCN: NM_012119

ORF Size: 975 bp

OTI Disclaimer: The molecular sequence of this clone aligns with the gene accession number as a point of reference only. However, individual transcript sequences of the same gene can differ through naturally occurring variations (e.g. polymorphisms), each with its own valid existence. This clone is substantially in agreement with the reference, but a complete review of all prevailing variants is recommended prior to use. [More info](#)

OTI Annotation: This clone was engineered to express the complete ORF with an expression tag. Expression varies depending on the nature of the gene.

Components: The ORF clone is ion-exchange column purified and shipped in a 2D barcoded Matrix tube containing 10ug of transfection-ready, dried plasmid DNA (reconstitute with 100 ul of water).

Reconstitution Method:

1. Centrifuge at 5,000xg for 5min.
2. Carefully open the tube and add 100ul of sterile water to dissolve the DNA.
3. Close the tube and incubate for 10 minutes at room temperature.
4. Briefly vortex the tube and then do a quick spin (less than 5000xg) to concentrate the liquid at the bottom.
5. Store the suspended plasmid at -20°C. The DNA is stable for at least one year from date of shipping when stored at -20°C.

RefSeq: [NM_012119.4](#)

RefSeq Size: 2250 bp

RefSeq ORF: 978 bp

Locus ID: 23552

UniProt ID: [Q8IZL9](#)

Cytogenetics: 9q22.1

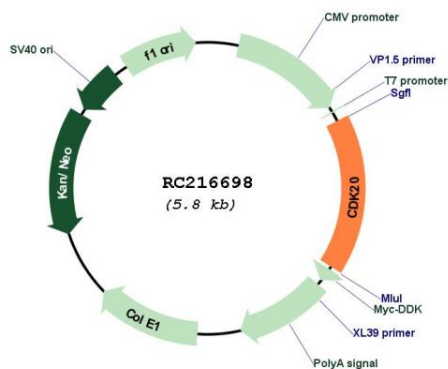
Domains: pkinase, TyrKc, S_TKc

Protein Families: Druggable Genome, Protein Kinase

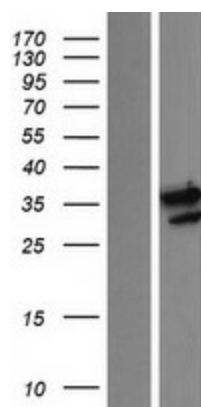
MW: 35.9 kDa

Gene Summary: The protein encoded by this gene contains a kinase domain most closely related to the cyclin-dependent protein kinases. The encoded kinase may activate cyclin-dependent kinase 2 and is involved in cell growth. Alternatively spliced transcript variants encoding distinct isoforms have been reported. [provided by RefSeq, Dec 2009]

Product images:



Circular map for RC216698



Western blot validation of overexpression lysate (Cat# [LY415970]) using anti-DDK antibody (Cat# [TA50011-100]). Left: Cell lysates from untransfected HEK293T cells; Right: Cell lysates from HEK293T cells transfected with RC216698 using transfection reagent MegaTran 2.0 (Cat# [TT210002]).