

## Product datasheet for **RC216694**

### gamma Adaptin (AP1G1) (NM\_001128) Human Tagged ORF Clone

#### Product data:

Product Type:	Expression Plasmids
Product Name:	gamma Adaptin (AP1G1) (NM_001128) Human Tagged ORF Clone
Tag:	Myc-DDK
Symbol:	gamma Adaptin
Synonyms:	ADTG; CLAPG1
Mammalian Cell Selection:	Neomycin
Vector:	pCMV6-Entry (PS100001)
E. coli Selection:	Kanamycin (25 ug/mL)



[View online »](#)

**ORF Nucleotide Sequence:**

>RC216694 representing NM\_001128  
 Red=Cloning site Blue=ORF Green=Tags(s)

TTTTGTAATACGACTCACTATAGGGCGGCCGGGAATTCGTCGACTGGATCCGGTACCGAGGAGATCTGCC  
 GCC**CGGATCGCC**

ATGCCAGCCCCATCAGATTGCGGGAGCTGATCCGGACCATCCGGACAGCCCGAACCAAGCTGAAGAAC  
 GAGAAATGATCCAGAAAGAAATGTCTGCAATCCGGTCATCTTTAGAGAAGAAGACAATACATACCGATG  
 TCGGAATGTGGCAAAATTAAGTATATGCACATGCTGGGCTACCTGCTCACTTTGGACAGTTGGAGTGC  
 CTCAAGCTTATTGCCTCTCAAAAATTTACAGACAAACGCATTGGCTATTTAGGGGCAATGCTGCTTTAG  
 ATGAAAGACAAGATGTCCATCTTCTCATGACCAACTGTATCAAGAATGATCTTAATCATAGCACGCAATT  
 CGTACAGGGGTTAGCACTTTGTACCCTCGGCTGCATGGGCTCCTCAGAGATGTGCAGAGATCTTGCAGGA  
 GAGGTAGAGAAGCTCCTGAAAACCTCCAACCTTACTTAAGAAAAAGGCAGCACTGTGTGCTGTTTCATG  
 TCATCAGGAAAGTTCCTGAACCTTATGGAGATGTTTTACCAGCAACAAAAATTTATTGAATGAGAAGAA  
 CCATGGTGTCTCCACACATCTGTAGTCTCCTCACAGAAATGTGTGAGCGAAGCCAGACATGCTTGCG  
 CATTTCAGAAAGAATGAAAAGCTTGTGCCCAATTAGTTCGTATTTAAAGAACCTCATCATGTCCGGAT  
 ATTCACCAAGAACATGATGTTTCTGGTATCAGTGACCCCTTTTGCAGGTACGAATTTTGGGTTATTAAG  
 AATTTTAGGACGAAATGATGATGATTCAAGTGAAGCTATGAATGATATATTAGCACAGGTTGCCACTAAT  
 ACTGAGACTAGTAAAAATGTAGGAAATGCTATTCTTTATGAAACGGTTTTGACTATCATGGATATTAAGT  
 CAGAGAGTGGATTGCGAGTCTAGCCATAAATATCCTGGGTCGTTTTCTTATTGAACAATGACAAGAATAT  
 TAGATATGTGGCTCTGACATCTTTGTTGAAGACTGTACAGACAGATCATAATGCAGTACAGAGGCACAGA  
 AGCACAATTGTGGACTGTCTAAAGATTTGGATGTCTCAATAAAACGGCGTCAATGGAATGAGTTTTG  
 CCCTGGTAAATGGGAATAATATCCGAGGCATGATGAAAGAATTACTTTATTTTCTGGATTGCTGAGCC  
 AGAATTTAAAGCAGACTGTGCATCTGGAATCTTTCTTGCTGCAGAAAAGTATGCACCTTCCAACGATGG  
 CATATAGACACAATTATGCGTGTGTTGACAACGGCAGGAAGTTATGTTCTGTGATGATGCAGTCCCAATT  
 TAATCCAGTTAATAACTAATAGTGTGGAGATGCATGCCTATACTGTCCAGCGCCTGTACAAGCAATTCT  
 TGGTGATTATTCTCAACAACCTTTGGTACAAGTGGCTGCATGGTGTATAGGTGAATATGGTATCTTCTT  
 GTATCTGGCCAGTGTGAAGAGGAAGAGCCTATTCAGGTAACAGAGGATGAAGTGTGGATATTTAGAAA  
 GTGTCCTAATCTAATATGTCCACCTCTGTGACACGAGGTTATGCCCTCACTGCCATTATGAAGCTTTC  
 CACTCGATTCACTTGTACTGTAAACCGAATTAAGAAAGTGGTTCCATCTACGGAAGCAGCATTGATGTG  
 GAACTCCAGCAGAGGGCAGTAGAATATAATGCACCTTTTCAAGAAATATGACCACATGAGGCTGCCCTAC  
 TTGAGAGAATGCCTGTATGAAAAAGTGACCACAAATGGCCCTACTGAGATTGTGCAGACAAATGGAGA  
 GACAGAACCAGCTCCACTAGAGACCAAACCGCCACCCTCTGGGCCACAGCCACCAGCCAGGCCAATGAT  
 TTATTGGATTTGTTGGGAGGAAATGACATAACACCTGTTATTCCAACCTGCGCCTACAAGCAAACCATCTT  
 CTGCTGGTGGAGAATCTTGTATTTGCTGGGAGACATCAACCTTACAGGTGCTCCAGCTGCTGCTCCTGC  
 CCCTGCCCTCAGTCCCACAGATATCCCAGCCCCCTTCTTGTGGATGGGCTTTCATCACAGCCTCTCTTC  
 AATGATATTGCTGCAGGCATCCCCTCCATCACAGCATACAGTAAGAATGGCTTGAAGATAGAATTCACCT  
 TTGAACGGTCAAATACCAACCCAGTGTAAACAGTATAACGATACAGGCCTCAACAGCAGAGAGCTAGA  
 TATGACGGACTTTGTTTTCCAAGCTGCAGTACCAAGACATTCCAGCTGCAGCTTGTCTCTCCTAGCAGC  
 AGCATTGTCCAGCATTAAACACGGGGACCATCACACAAGTCATTAAGTTCTGAACCCTCAGAAGCAAC  
 AGCTGCGAATGCGGATCAAGCTTACATATAATCAAGGGCTCAGCAATGCAAGATCTAGCAGAGGTGAA  
 CAACTTCCCCCTCAGTCTGGCAA

**ACGCGT**ACGCGGCCGCTCGAGCAGAAACTCATCTCAGAAGAGGATCTGGCAGCAATGATATCCTGGATT  
 ACAAGGATGACGACGATAAGGTTTAA

**Protein Sequence:** >RC216694 representing NM\_001128  
Red=Cloning site Green=Tags(s)

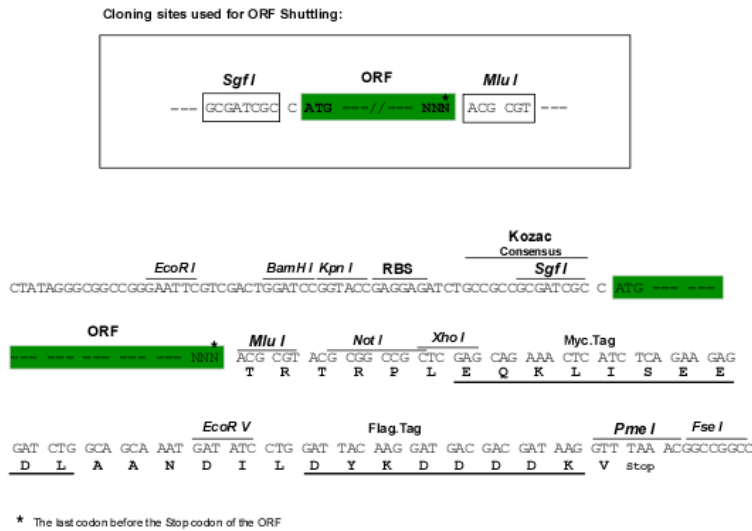
MPAPIRLRELIRTIRTARTQAEEREMIQKECAAIRSSFREEDNTYRCRNVAKLLYMHMLGYPAHFGQLEC  
LKLIASQKFTDKRIGYLGAMLLDERQDVHLLMTNCIKNDLNHSTQFVQGLALCTLGCMGSSEMCRDLA  
EVEKLLKTSNSYLKKAALCAVHVIRKVPPELMEFLPATKNLLNEKNHGVLTHTSVVLLTEMCERSPDMLA  
HFRKNEKLVLPQLVRILKNLIMSGYSPEHDVSGISDPFLQVRILRLLRILGRNDDDSSEAMNDILAQVATN  
TETSKNVGNAILYETVLTIMDIKSEGLRVLAINILGRFLLNNDKNIRYVALTSLKTVQTDHNAVQRHR  
STIVDCLKDLDVSIKRRAMELSFALVNGNIRGMMKELLYFLDSCEPEFKADCASGIFLAAEKYAPSKRW  
HIDTIMRVLTTAGSYVRDDAVPNLIQLITNSVEMHAYTVQRLYKAILGDYSQQPLVQVAAWCIGEYDGLL  
VSGQCEEEPIQVTEDEVLDILESVLISNMSTSVTRGYALTAIMKLSTRFTCTVNRKVVSIYSSIDV  
ELQQRAVEYNALFKKYDHMRSALLERMPVMEKVTNNGPTEIVQTNGETEPAPLETKPPPSGPQPTSQAND  
LLDLLGGNDITPVIPTAPTSKPSSAGGELLDLLGDINLTGAPAAAPAPASVPQISQPPFLLDGLSSQPLF  
NDIAAGIPSITAYSKNGLKIEFTFERSNTNPSVTVITIQASNSTELDMTDFVFQAAVPKTFQLQLLSPSS  
SIVPAFNTGTITQVIKVLNPQKQLRMRIKLTYNHKGSAQDLAEVNNFPPQSWQ

TRTRPLEQKLISEEDLAANDILDYKDDDDKV

**Chromatograms:** [https://cdn.origene.com/chromatograms/mk6597\\_b04.zip](https://cdn.origene.com/chromatograms/mk6597_b04.zip)

**Restriction Sites:** Sgfl-Mlul

Cloning Scheme:



ACCN: NM\_001128

ORF Size: 2475 bp

OTI Disclaimer: The molecular sequence of this clone aligns with the gene accession number as a point of reference only. However, individual transcript sequences of the same gene can differ through naturally occurring variations (e.g. polymorphisms), each with its own valid existence. This clone is substantially in agreement with the reference, but a complete review of all prevailing variants is recommended prior to use. [More info](#)

OTI Annotation: This clone was engineered to express the complete ORF with an expression tag. Expression varies depending on the nature of the gene.

Components: The ORF clone is ion-exchange column purified and shipped in a 2D barcoded Matrix tube containing 10ug of transfection-ready, dried plasmid DNA (reconstitute with 100 ul of water).

**Reconstitution Method:**

1. Centrifuge at 5,000xg for 5min.
2. Carefully open the tube and add 100ul of sterile water to dissolve the DNA.
3. Close the tube and incubate for 10 minutes at room temperature.
4. Briefly vortex the tube and then do a quick spin (less than 5000xg) to concentrate the liquid at the bottom.
5. Store the suspended plasmid at -20°C. The DNA is stable for at least one year from date of shipping when stored at -20°C.

**RefSeq:** [NM\\_001128.1](#)

**RefSeq Size:** 6841 bp

**RefSeq ORF:** 2469 bp

**Locus ID:** 164

**UniProt ID:** [O43747](#)

**Cytogenetics:** 16q22.2

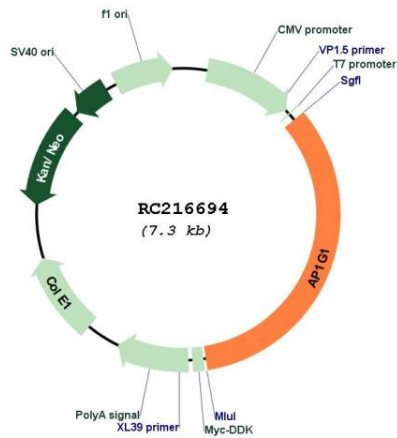
**Domains:** Adaptin\_N, Alpha\_adaptinC2

**Protein Pathways:** Lysosome

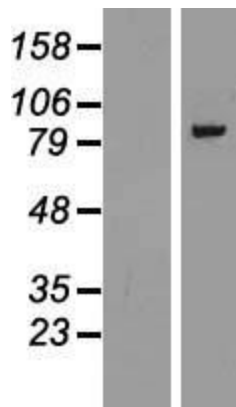
**MW:** 91.2 kDa

**Gene Summary:** Adaptins are important components of clathrin-coated vesicles transporting ligand-receptor complexes from the plasma membrane or from the trans-Golgi network to lysosomes. The adaptin family of proteins is composed of four classes of molecules named alpha, beta-, beta prime- and gamma- adaptins. Adaptins, together with medium and small subunits, form a heterotetrameric complex called an adaptor, whose role is to promote the formation of clathrin-coated pits and vesicles. The protein encoded by this gene is a gamma-adaptin protein and it belongs to the adaptor complexes large subunits family. Two transcript variants encoding different isoforms have been found for this gene. [provided by RefSeq, Jul 2008]

Product images:



Circular map for RC216694



Western blot validation of overexpression lysate (Cat# [LY420113]) using anti-DDK antibody (Cat# [TA50011-100]). Left: Cell lysates from untransfected HEK293T cells; Right: Cell lysates from HEK293T cells transfected with RC216694 using transfection reagent MegaTran 2.0 (Cat# [TT210002]).