

Product datasheet for **RC216693**

CD98 (SLC3A2) (NM_001012664) Human Tagged ORF Clone

Product data:

Product Type:	Expression Plasmids
Product Name:	CD98 (SLC3A2) (NM_001012664) Human Tagged ORF Clone
Tag:	Myc-DDK
Symbol:	CD98
Synonyms:	4F2; 4F2HC; 4T2HC; CD98; CD98HC; MDU1; NACAE
Mammalian Cell Selection:	Neomycin
Vector:	pCMV6-Entry (PS100001)
E. coli Selection:	Kanamycin (25 ug/mL)



[View online »](#)

ORF Nucleotide Sequence:

>RC216693 ORF sequence
 Red=Cloning site Blue=ORF Green=Tags(s)

TTTTGTAATACGACTCACTATAGGGCGGCCGGAATTCGTCGACTGGATCCGGTACCGAGGAGATCTGCC
 GCC**CGGATCGCC**

ATGGAGCTACAGCCTCCTGAAGCCTCGATCGCCGTCGTGTCGATTCCGCGCCAGTTGCCTGGCTCACATT
 CGGAGGCTGGTGTCCAGGTCTCAGCGCGGGGACGACTCAGGCACCATGAGCCAGGACACCGAGGTGGA
 TATGAAGGAGGTGGAGCTGAATGAGTTAGAGCCCGAGAAGCAGCCGATGAACGCGCGTCTGGGCGGCC
 ATGTCCCTGGCGGGAGCCGAGAAGAATGGTCTGGTGAAGATCAAGGTGGCGGAAGACGAGCGGAGGCGG
 CAGCCGCGGCTAAGTTCACGGCCCTGTCCAAGGAGGAGCTGCTGAAGGTGGCAGGACGCCCGGCTGGGT
 ACGCACCCGCTGGGCACTGCTGCTGCTCTTCTGGCTCGGCTGGCTCGGCATGCTTGTGCTGCCGTGGTC
 ATAATCGTGCAGCGCCGCTTGTGCGAGCTACCGCGCAGAAGTGGTGGCACACGGCGCCCTCTACC
 GCATCGGCGACCTTCAGGCCCTCAGGGCCACGGCGGGCAACCTGGCGGGTCTGAAGGGGCGTCTCGA
 TTACCTGAGCTCTCTGAAGGTGAAGGGCCTTGTGCTGGTCCAATTCACAAGAACCAGAAGGATGATGTC
 GCTCAGACTGACTTGCTGCAGATCGACCCCAATTTTGGCTCCAAGGAAGATTTTACAGTCTCTTGAAT
 CGGCTAAAAAAGAGCATCCGTGTCATTCTGGACCTTACTCCAACTACCGGGGTGAGAAGTCTGGTT
 CTCCACTCAGGTTGACTGTGGCCACCAAGGTGAAGGATGCTCTGGAGTTTGGCTGCAAGTGGCGTG
 GATGGGTTCCAGGTTCCGGACATAGAGAATCTGAAGGATGCATCCTCATTCTTGGCTGAGTGGCAAAATA
 TCACCAAGGGCTTCAGTGAAGACAGGCTCTTGAATGCGGGGACTAACTCCTCCGACCTTCAGCAGATCCT
 GAGCCTACTCGAATCCAACAAAGACTTGTGTTGACTAGCTCATACCTGTCTGATTCTGGTTCTACTGGG
 GAGCATAAAAAATCCCTAGTCACACAGTATTTGAATGCCACTGGCAATCGCTGGTGCAGCTGGAGTTTGT
 CTCAGCAAGGCTCCTGACTTCTTCTTCCGGCTCAACTTCTCGACTCTACCAGCTGATGCTCTCAC
 CCTGCCAGGGACCCCTGTTTTACGCTACGGGGATGAGATTGGCCTGGATGCAGTCCCTTCTGGACAG
 CCTATGGAGGCTCCAGTCATGCTGTGGGATGAGTCCAGCTTCCCTGACATCCCAGGGGCTGTAAGTGCCA
 ACATGACTGTGAAGGGCCAGAGTGAAGACCCTGGCTCCCTCCTTCTTGTTCGGCGGCTGAGTGACCA
 GCGGAGTAAGGAGCGCTCCCTACTGCATGGGGACTTCCACGCTTCTCCGCTGGGCTGGACTCTTCTCC
 TATATCCGCCACTGGGACCAGAATGAGCGTTTTCTGGTAGTGCTTAACCTTGGGGATGTGGGCTCTCGG
 CTGGACTGCAGGCTCCGACCTGCCTGCCAGCGCCAGCCTGCCAGCAAGGCTGACCTCTGCTCAGCAC
 CCAGCCAGGCGTGAGGAGGGCTCCCTCTTGAAGTGGAAACGCTGAAACTGGAGCTCACGAAGGGCTG
 CTGCTCCGCTTCCCTACGCGCC

AG**CGGACCG**ACGCGTACGCGGCCGCTCGAGCAGAACTCATCTCAGAAGAGGATCTGGCAGCAAATGATATCC
 TGGATTACAAGGATGACGACGATAAGGTTAA

Protein Sequence:

>RC216693 protein sequence
 Red=Cloning site Green=Tags(s)

MELQPPEASIAVVSIPRQLPGSHSEAGVQGLSAGDSDGMSQDTEVDMKEVELNELEPEKQPMNAASGAA
 MSLAGAENGLVKIKVAEDEAEAAAAAKFTGLSKEELLKVAGSPGWVTRWALLLLFWLWGLMLAGAVV
 IIVRAPRCRELP AQKWWHTGALYRIGDLQAFQGHGAGNLAGLKGRLDYLSLKVKGLVLPPIHKNQKDDV
 AQTDLLQIDPNFGSKEDFDSLLQSAKKKSIRVILDLPNYRGENSWFSTQVDTVATKVKDALEFWLQAGV
 DGFQVRDIENLKDASSFLAEWQNIKGFSEDRLLIAGTNSDLQQLSLLESNKDLLLSSYLSDSGSTG
 EHTKSLVTQYLNATGNRWCSWSLSQARLLTSFLPAQLLRLYLMLFTLPGTPVFSYGDEIGLDAALPGQ
 PMEAPVMLWDESSFPDIPGAVSANMTVKGQSEDPGSLLSLFRRLSDQRSKERSLLHGFHAFSAGPGLFS
 YIRHWDQNERFLVVLNFGDVGLSAGLQASDLPASASLPKADLLSTQPGREESPLELERLKLEPHEGL
 LLRFPYAA

SGP**TRTRPLEQKLI**SEEDLAANDILDYKDDDDKV

Chromatograms:

https://cdn.origene.com/chromatograms/mk6618_b10.zip

Restriction Sites:

Sgfl-RsrII

Cloning Scheme:


ACCN: NM_001012664

ORF Size: 1704 bp

OTI Disclaimer: The molecular sequence of this clone aligns with the gene accession number as a point of reference only. However, individual transcript sequences of the same gene can differ through naturally occurring variations (e.g. polymorphisms), each with its own valid existence. This clone is substantially in agreement with the reference, but a complete review of all prevailing variants is recommended prior to use. [More info](#)

OTI Annotation: This clone was engineered to express the complete ORF with an expression tag. Expression varies depending on the nature of the gene.

Components: The ORF clone is ion-exchange column purified and shipped in a 2D barcoded Matrix tube containing 10ug of transfection-ready, dried plasmid DNA (reconstitute with 100 ul of water).

- Reconstitution Method:**
1. Centrifuge at 5,000xg for 5min.
 2. Carefully open the tube and add 100ul of sterile water to dissolve the DNA.
 3. Close the tube and incubate for 10 minutes at room temperature.
 4. Briefly vortex the tube and then do a quick spin (less than 5000xg) to concentrate the liquid at the bottom.
 5. Store the suspended plasmid at -20°C. The DNA is stable for at least one year from date of shipping when stored at -20°C.

RefSeq: [NM_001012664.3](#)

RefSeq Size: 2161 bp

RefSeq ORF: 1707 bp

Locus ID: 6520

UniProt ID: [P08195](#)

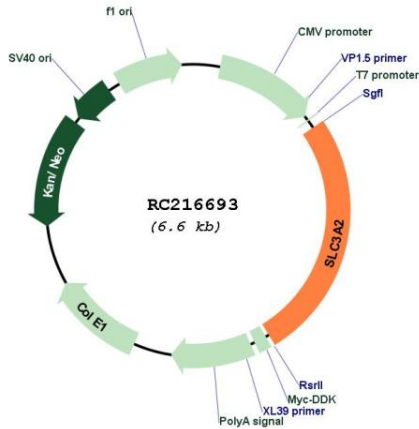
Cytogenetics: 11q12.3

Protein Families: Transmembrane

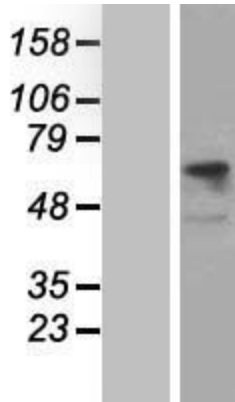
MW: 61.8 kDa

Gene Summary: This gene is a member of the solute carrier family and encodes a cell surface, transmembrane protein. The protein exists as the heavy chain of a heterodimer, covalently bound through di-sulfide bonds to one of several possible light chains. The encoded transporter plays a role in regulation of intracellular calcium levels and transports L-type amino acids. Alternatively spliced transcript variants, encoding different isoforms, have been characterized. [provided by RefSeq, Nov 2010]

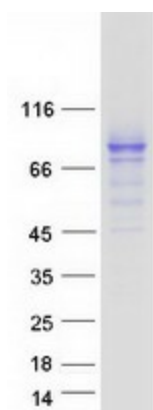
Product images:



Circular map for RC216693



Western blot validation of overexpression lysate (Cat# [LY422810]) using anti-DDK antibody (Cat# [TA50011-100]). Left: Cell lysates from untransfected HEK293T cells; Right: Cell lysates from HEK293T cells transfected with RC216693 using transfection reagent MegaTran 2.0 (Cat# [TT210002]).



Coomassie blue staining of purified SLC3A2 protein (Cat# [TP316693]). The protein was produced from HEK293T cells transfected with SLC3A2 cDNA clone (Cat# RC216693) using MegaTran 2.0 (Cat# [TT210002]).