

Product datasheet for **RC216690**

PDE9A (NM_002606) Human Tagged ORF Clone

Product data:

Product Type:	Expression Plasmids
Product Name:	PDE9A (NM_002606) Human Tagged ORF Clone
Tag:	Myc-DDK
Symbol:	PDE9A
Synonyms:	HSPDE9A2
Mammalian Cell Selection:	Neomycin
Vector:	pCMV6-Entry (PS100001)
E. coli Selection:	Kanamycin (25 ug/mL)



[View online »](#)

ORF Nucleotide Sequence:

>RC216690 representing NM_002606
 Red=Cloning site Blue=ORF Green=Tags(s)

TTTTGTAATACGACTCACTATAGGGCGGCCGGGAATTCGTCGACTGGATCCGGTACCGAGGAGATCTGCC
 GCC**GCGATCGCC**

ATGGGATCCGGCTCCTCCAGCTACCGGCCAAGGCCATCTACCTGGACATCGATGGACGCATTGAGAAGG
 TAATCTTCAGCAAGTACTGCAACTCCAGCGACATCATGGACCTGTTCTGCATCGCCACCGCCTGCCTCG
 GAACACGACCATCTCCCTGCTGACCACCGACGACGCCATGGTCTCCATCGACCCACCATGCCCGGAAT
 TCAGAACGCACTCCGTACAAAGTGAGACCTGTGGCCATCAAGCAACTCTCCGCTGGTGTGAGGACAAGA
 GAACCACAAGCCGTGGCCAGTCTGCTGAGAGACCACTGAGGGACAGACGGTTGTGGCCTGGAGCAGCC
 CCGGAGGGAAGGAGCATTGAAAGTGGACAGGTAGAGCCAGGCCAGAGAGCCCGAGGGCTGCTACCAG
 GAAGGCCAGCGCATCCCTCCAGAGAGAGAAGAATTAATCCAGAGCGTGTGGCGCAGTTGCAGAGCAGT
 TCTCAAGAGCATTCAAAATCAATGAACTGAAAGCTGAAGTTGCAATCACTTGGTGTCTAGAGAAAACG
 CGTGGAATTGGAAGGACTAAAAGTGGTGGAGATTGAGAAATGCAAGAGTGACATTAAGAAGATGAGGGAG
 GAGCTGGCGGCCAGAAGCAGCAGGACCAACTGCCCTGTAAAGTACAGTTTTTTGGATAACCAACAAGAAGT
 TGACTCTCGACGCGATGTTCCCACTTACCCCAAGTACCTGCTCTCTCCAGAGACCATCGAGGCCCTGCG
 GAAGCCGACCTTTGACGTCTGGCTTTGGGAGCCCAATGAGATGCTGAGCTGCCTGGAGCACATGTACCAC
 GACCTCGGGCTGGTCAGGGACTTCAGCATCAACCCTGTACCCTCAGGAGGTGGCTGTTCTGCGTCCACG
 ACAACTACAGAAACAACCCCTTCCACAACCTCCGGCACTGCTTCTGCGTGGCCAGATGATGTACAGCAT
 GGTCTGGCTCTGCAGTCTCCAGGAGAAGTTCTCACAACCGGATATCCTGATCCTAATGACAGCGGCCATC
 TGCCACGATCTGGACCATCCCGGCTACAACAACACGTACCAGATCAATGCCCGCACAGAGCTGGCGGTCC
 GCTACAATGACATCTCACCGCTGGAGAACCACCCTGCGCCGTGGCCTTCCAGATCCTCGCCGAGCTGA
 GTGCAACATCTTCTCAACATCCCACTGATGGGTTCAAGCAGATCCGACAGGGAATGATCACATTAATC
 TTGGCCACTGACATGGCAAGACATGCAGAAATTATGGATTCTTTCAAAGAGAAAATGGAGAAATTTGACT
 ACAGCAACGAGGAGCACATGACCCTGCTGAAGATGATTTTGATAAAATGCTGTGATATCTTAACGAGGT
 CCGTCCAATGGAAGTCGAGAGCCTTGGGTGGACTGTTTATTAGAGGAATATTTTATGCAGAGCGACCGT
 GAGAAGTCAGAAGCCTTCTGTGGCACCCTCATGGACCAGACAAAGTGACCAAGGCCACAGCCGAGA
 TTGGGTTTCATCAAGTTTGTCTGATCCCAATGTTTGAACAGTGACCAAGCTCTTCCCCATGTTGAGGA
 GATCATGTGCAGCCACTTTGGGAATCCCGAGATCGCTACGAGGAGCTGAAGCGGATAGATGACGCCATG
 AAAGAGTTACAGAAGAAGACTGACAGCTTGACGTCTGGGGCCACCGAGAAGTCCAGAGAGAGAAGCAGAG
 ATGTGAAAAACAGTGAAGGAGACTGTGCC

AC**GCGGCCGC**TCGAGCAGAACTCATCTCAGAAGAGGATCTGGCAGCAAATGATATCCTGGAA
 TTACAAGGATGACGACGATAAGGTTTAA

Protein Sequence:

>RC216690 representing NM_002606
 Red=Cloning site Green=Tags(s)

MGS~~SSSYR~~PKAIYLDIDGRIQKVI~~FSKYCN~~SSD~~IMDLFC~~IATGLPRNTTISLLTTDDAMVSI~~DPTMPAN~~
 SERTPYKVRPVAIKQLSAGVEDKRTTSRQ~~SAERPLR~~DRRVVGL~~EQPRREGAFESGQ~~VEPRPREPQGCYQ
 EGQRIPPEREELIQSVLAQVAEQFSRAFKINELKAEVANHLAVLEKRVLEGLKVVEIEKCKSDIKK~~MRE~~
 ELAARSSRTNCPCKYSFLDNHKKLTPRRDVPTYPKYLLSPETIEALRKPTFDVWLWEPNEMLS~~CLEHMYH~~
 DLGLVRDFINPVTLRRWLFVHDNYRNNPFHFRHCFVAQMMYSMVWLCSLQEKFSQTDILILMTAAI
 CHDLDPGYNNTYQINARTELVRYNDISPLENHHC~~AVAFQILAEPECNIFSNIP~~PDGFKQIRQGMITLI
 LATDMARHAEIMDSFKEKMFNDYSNEEHMTLLK~~MILIKCCDISNEVRPMEVAEPWVDCLLEEYFMQSDR~~
 EKSEGLPVAPFMDRDKVTKATAQIGFIK~~FVLIPMFETVTKL~~FPMVEEIMLQPLWESRDRYEELKRIDDAM
 KELQKTDLSLTSGATEKSRERSR~~RVKN~~SEGDC

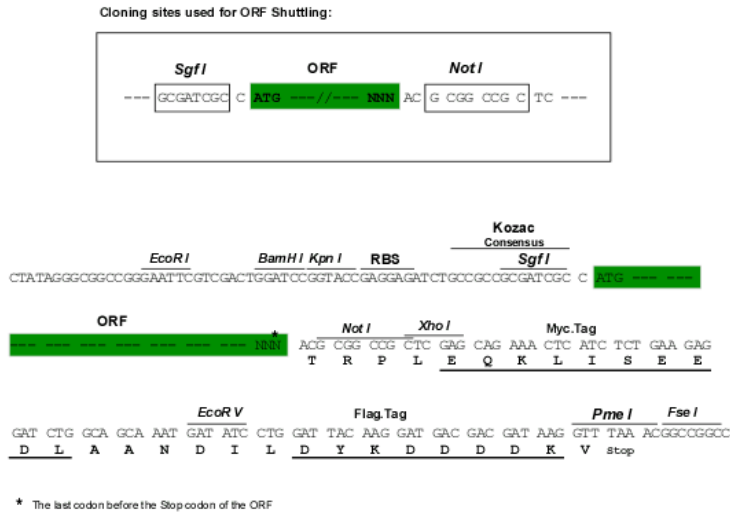
TRRLEQKLISEEDLAANDILDYKDDDDKV

Chromatograms:

https://cdn.origene.com/chromatograms/mg2697_e01.zip

Restriction Sites: Sgfl-NotI

Cloning Scheme:



ACCN: NM_002606

ORF Size: 1779 bp

OTI Disclaimer: The molecular sequence of this clone aligns with the gene accession number as a point of reference only. However, individual transcript sequences of the same gene can differ through naturally occurring variations (e.g. polymorphisms), each with its own valid existence. This clone is substantially in agreement with the reference, but a complete review of all prevailing variants is recommended prior to use. [More info](#)

OTI Annotation: This clone was engineered to express the complete ORF with an expression tag. Expression varies depending on the nature of the gene.

Components: The ORF clone is ion-exchange column purified and shipped in a 2D barcoded Matrix tube containing 10ug of transfection-ready, dried plasmid DNA (reconstitute with 100 ul of water).

- Reconstitution Method:
1. Centrifuge at 5,000xg for 5min.
 2. Carefully open the tube and add 100ul of sterile water to dissolve the DNA.
 3. Close the tube and incubate for 10 minutes at room temperature.
 4. Briefly vortex the tube and then do a quick spin (less than 5000xg) to concentrate the liquid at the bottom.
 5. Store the suspended plasmid at -20°C. The DNA is stable for at least one year from date of shipping when stored at -20°C.

RefSeq: [NM_002606.3](#)

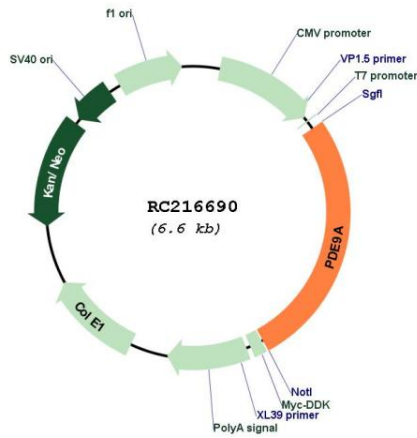
RefSeq Size: 2103 bp

RefSeq ORF: 1782 bp

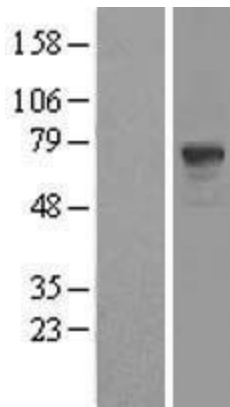
Locus ID: 5152

UniProt ID: [O76083](#)
Cytogenetics: 21q22.3
Domains: PDEase, HDc
Protein Families: Druggable Genome
Protein Pathways: Progesterone-mediated oocyte maturation, Purine metabolism
MW: 68.3 kDa
Gene Summary: The protein encoded by this gene catalyzes the hydrolysis of cAMP and cGMP to their corresponding monophosphates. The encoded protein plays a role in signal transduction by regulating the intracellular concentration of these cyclic nucleotides. Multiple transcript variants encoding several different isoforms have been found for this gene. [provided by RefSeq, Jul 2008]

Product images:



Circular map for RC216690



Western blot validation of overexpression lysate (Cat# [LY419224]) using anti-DDK antibody (Cat# [TA50011-100]). Left: Cell lysates from untransfected HEK293T cells; Right: Cell lysates from HEK293T cells transfected with RC216690 using transfection reagent MegaTran 2.0 (Cat# [TT210002]).