

Product datasheet for **RC216680**

DYRK1B (NM_006484) Human Tagged ORF Clone

Product data:

Product Type:	Expression Plasmids
Product Name:	DYRK1B (NM_006484) Human Tagged ORF Clone
Tag:	Myc-DDK
Symbol:	DYRK1B
Synonyms:	AOMS3; MIRK
Mammalian Cell Selection:	Neomycin
Vector:	pCMV6-Entry (PS100001)
E. coli Selection:	Kanamycin (25 ug/mL)



[View online »](#)

ORF Nucleotide Sequence:

>RC216680 representing NM_006484
 Red=Cloning site Blue=ORF Green=Tags(s)

TTTTGTAATACGACTCACTATAGGGCGGCCGGGAATTCGTCGACTGGATCCGGTACCGAGGAGATCTGCC
 GCC**CGGATCGCC**

ATGGCCGTCCACCGGGCCATGGTCCCTTCTCTGGCTTCCAGGGCCCCAGGAGCACACGCAGGTATTGC
 CTGATGTGCGGCTACTGCCTCGGAGGCTGCCCTGGCCTTCCGGGATGCAACCTCAGCCCCGCTGGGTAA
 GCTCTCTGTGGACCTCATCAAGACCTACAAGCACATCAATGAGGTATACTATGCGAAGAAGAAGCGCGG
 GCCCAGCAGGCGCCACCCAGGATTCGAGCAACAAGAAGGAGAAGAAGGTCTGAACCATGGTTATGATG
 ACGACAACCATGACTACATCGTGCGCAGTGGCAGCGCTGGTGGAGCGCTACGAAATTGACTCGCTCAT
 TGGCAAAGGCTCCTTTGGCCAGGTGGTAAAGCCTATGATCATCAGACCCAGGAGCTTGTGGCCATCAAG
 ATCATCAAGAACAAAAGGCTTTCTGAACCAGGCCAGATTGAGCTGCGGCTGTGGAGCTGATGAACC
 AGCATGACACGGAGATGAAGTACTATATAGTACACCTGAAGCGGCACTTCATGTTCCGGAACCACCTGTG
 CCTGGTATTTGAGCTGCTCCTACAACCTGTACGACCTCTGCGCAACCCCACTTCCGCGGCGTCTCG
 CTGAACCTGACCCGGAAGCTGGCGCAGCAGCTCTGCACGGCACTGCTCTTTCTGGCCACGCTGAGCTCA
 GCATATTCACTGCGACCTCAAGCCCGAAAACATCTTGCTGTGCAACCCCAAGCGCAGCGCCATCAAGAT
 TGTGGACTTCCGAGCTCCTGCCAGCTTGGCCAGAGGATCTACCAGTATATCCAGAGCCGCTTCTACCGC
 TCACCTGAGGTGCTCCTGGGCACACCCTACGACCTGGCCATTGACATGTGGTCCCTGGGCTGCATCCTTG
 TGGAGATGCACACCGGAGAGCCCTCTTCAAGTGGTCCAATGAGGTGACCCAGATGAACCGCATTGTGGA
 GGTGCTGGGATCCCACCGGCCCATGCTGGACCAGGCGCCCAAGGCTCGAAGTACTTTGAACGGCTG
 CCTGGGGTGGCTGGACCCTACGAAGGACGAAAGAAGTACAGGAAGGATTACCAGGGCCCCGGGACACCGG
 GGCTGCAGGAGGACCTGGTGTGCGCATGCTGGAGTATGAGCCCGCCCGCATCAGCCCTGGGGC
 TCTGCAGCACGGCTTCTCCGCGCACGGCCGACGAGGCCACCAACACGGGCCCGGACAGGATGCC
 TCCACCTCGCCCGCCCTCGACACCTGCCCTCTTCCAGCACCGCCAGCTCCATCTCCAGTTCTGGAG
 GCTCCAGTGGCTCCTCCAGTGACAACCGGACCTACCGCTACAGCAACCGATATTGTGGGGCCCTGGGCC
 CCCTATCACAGACTGTGAGATGAACAGCCCCAGGTCCCACCTCCCAGCCGCTGCGGCCCTGGGCAGGG
 GGTGATGTGCCCCACAAGACACATCAAGCCCTGCCTCTGCCTCGTCACTGCCTGGGACCGGGGCCAGT
 TACCCCCAGCCCCGATACCTTGGTCTCCCCATACCAACCTCACCACCACCCCGGAGCTGATGGA
 TGTGAGCCTGGTGGGCGCCCTGCTGACTGCTCCCCACCTCACCAGCGCTGCCCCAGCACCAGGCT
 GCCTCAGCCCTCCGACTCGGATGACTGGAGGTCTCCACCCCTCCCGCTCCTGATGACCTGCCACTC
 TGGGGCTCACCTGGGCTCCGTGGTGTACCCAGAGCACAGCAGCCAGCTCG

ACGCGTACGCGGCCGCTCGAGCAGAAACTCATCTCAGAAGAGGATCTGGCAGCAAATGATATCCTGGATT
 ACAAGGATGACGACGATAAGGTTTAA

Protein Sequence:

>RC216680 representing NM_006484
 Red=Cloning site Green=Tags(s)

MAVPPGHGPFSGFPGPQEHTQVLPDVRLPRRLPLAFRDATSAPLRKLSVDLIKTYKHINEVYYAKKRR
 AQQAPPQDSSNKKEKKVLNHGYDDNDHYIVRSGERWLEREIDSLIGKGSFGQVVKAYDHQTQELVAIK
 I IKNKKAFLNQAQIELRLELMNQHDTEMKYYIVHLKRHFMRNHLCLVFELLSYNLYDLLRNTHFRGVS
 LNLTRKLAQQLCTALLFLATPELSIIHCDLKPENILLCNPKRSAIKIVDFGSSCQLGQRIYQYIQSRFYR
 SPEVLLGTPYDLAIDMWSLGCILVEMHTGEPLFSGSNEVDQMNRIEVLGIPPAAMLQAPKARKYFERL
 PGGGWTLRRTKELRKDYQGPGRRLQEDLVLRLMEYEPAAARISPLGALQHGFRRRTADEATNTGPAGSSA
 STSPAPLDTCPPSSSTASSISSSSGSSGSSSDNRTYRYSNRYCGGPGPIITDCEMNSPQVPPSQPLRPWAG
 GDVPHKTHQAPASASSLPGTGAQLPPQPRYLGRPPSPTSPPPPELMDVSLVGGPADCSPPHPAPAPQHPA
 ASALRTRMTGGRPPLPPDDPATLGPLHLGRVQPSTAASS

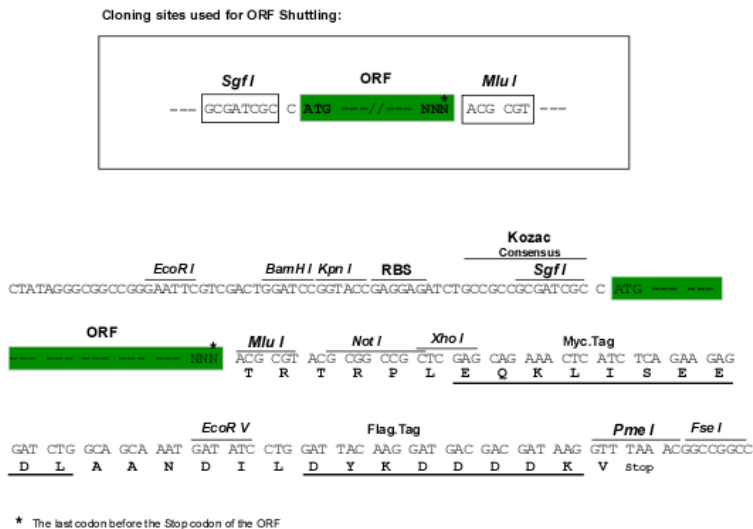
TRTRPLEQKLISEEDLAANDILDYKDDDDKV

Chromatograms:

https://cdn.origene.com/chromatograms/mk8069_b08.zip

Restriction Sites: SgfI-MluI

Cloning Scheme:



ACCN: NM_006484

ORF Size: 1803 bp

OTI Disclaimer: The molecular sequence of this clone aligns with the gene accession number as a point of reference only. However, individual transcript sequences of the same gene can differ through naturally occurring variations (e.g. polymorphisms), each with its own valid existence. This clone is substantially in agreement with the reference, but a complete review of all prevailing variants is recommended prior to use. [More info](#)

OTI Annotation: This clone was engineered to express the complete ORF with an expression tag. Expression varies depending on the nature of the gene.

Components: The ORF clone is ion-exchange column purified and shipped in a 2D barcoded Matrix tube containing 10ug of transfection-ready, dried plasmid DNA (reconstitute with 100 ul of water).

Reconstitution Method:

1. Centrifuge at 5,000xg for 5min.
2. Carefully open the tube and add 100ul of sterile water to dissolve the DNA.
3. Close the tube and incubate for 10 minutes at room temperature.
4. Briefly vortex the tube and then do a quick spin (less than 5000xg) to concentrate the liquid at the bottom.
5. Store the suspended plasmid at -20°C. The DNA is stable for at least one year from date of shipping when stored at -20°C.

RefSeq: [NM_006484.2](#), [NP_006475.1](#)

RefSeq Size: 2456 bp

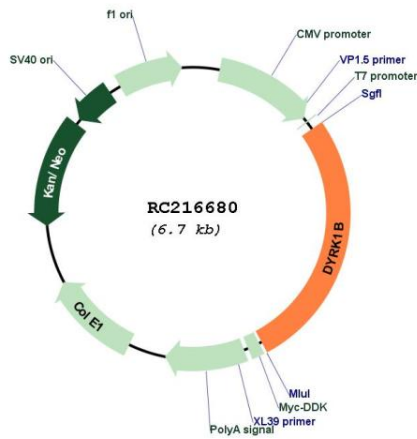
RefSeq ORF: 1806 bp

Locus ID: 9149

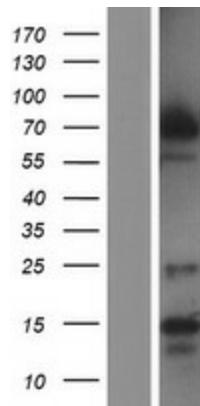
UniProt ID: [Q9Y463](#)
Cytogenetics: 19q13.2
Protein Families: Druggable Genome, Protein Kinase, Transcription Factors
MW: 66.2 kDa

Gene Summary: This gene encodes a member of a family of nuclear-localized protein kinases. The encoded protein participates in the regulation of the cell cycle. Expression of this gene may be altered in tumor cells, and mutations in this gene were found to cause abdominal obesity-metabolic syndrome 3. Alternative splicing results in multiple transcript variants. [provided by RefSeq, Jun 2014]

Product images:



Circular map for RC216680



Western blot validation of overexpression lysate (Cat# [LY416604]) using anti-DDK antibody (Cat# [TA50011-100]). Left: Cell lysates from untransfected HEK293T cells; Right: Cell lysates from HEK293T cells transfected with RC216680 using transfection reagent MegaTran 2.0 (Cat# [TT210002]).