

Product datasheet for **RC216640**

CD98 (SLC3A2) (NM_002394) Human Tagged ORF Clone

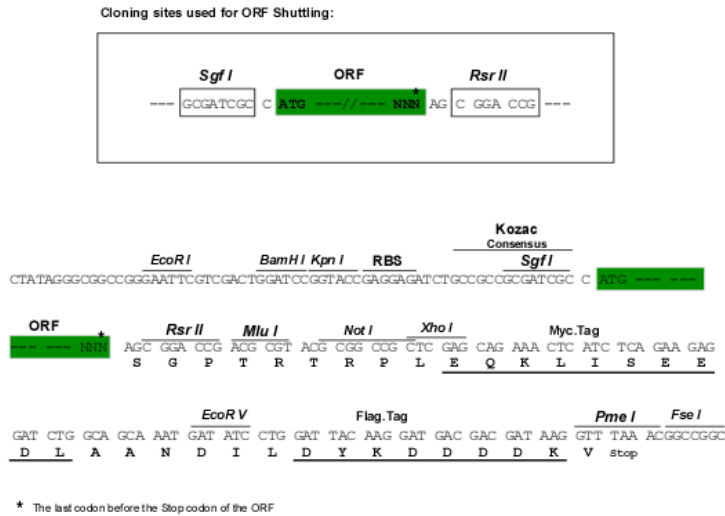
Product data:

Product Type:	Expression Plasmids
Product Name:	CD98 (SLC3A2) (NM_002394) Human Tagged ORF Clone
Tag:	Myc-DDK
Symbol:	CD98
Synonyms:	4F2; 4F2HC; 4T2HC; CD98; CD98HC; MDU1; NACAE
Mammalian Cell Selection:	Neomycin
Vector:	pCMV6-Entry (PS100001)
E. coli Selection:	Kanamycin (25 ug/mL)



[View online »](#)

Chromatograms: https://cdn.origene.com/chromatograms/mk6618_a10.zip
Restriction Sites: SgfI-RsrII
Cloning Scheme:



ACCN: NM_002394

ORF Size: 1890 bp

OTI Disclaimer: The molecular sequence of this clone aligns with the gene accession number as a point of reference only. However, individual transcript sequences of the same gene can differ through naturally occurring variations (e.g. polymorphisms), each with its own valid existence. This clone is substantially in agreement with the reference, but a complete review of all prevailing variants is recommended prior to use. [More info](#)

OTI Annotation: This clone was engineered to express the complete ORF with an expression tag. Expression varies depending on the nature of the gene.

Components: The ORF clone is ion-exchange column purified and shipped in a 2D barcoded Matrix tube containing 10ug of transfection-ready, dried plasmid DNA (reconstitute with 100 ul of water).

Reconstitution Method:

1. Centrifuge at 5,000xg for 5min.
2. Carefully open the tube and add 100ul of sterile water to dissolve the DNA.
3. Close the tube and incubate for 10 minutes at room temperature.
4. Briefly vortex the tube and then do a quick spin (less than 5000xg) to concentrate the liquid at the bottom.
5. Store the suspended plasmid at -20°C. The DNA is stable for at least one year from date of shipping when stored at -20°C.

Note: Plasmids are not sterile. For experiments where strict sterility is required, filtration with 0.22um filter is required.

RefSeq: [NM_002394.6](#)

RefSeq Size: 2347 bp

RefSeq ORF: 1893 bp

Locus ID: 6520

UniProt ID: [P08195](#)

Cytogenetics: 11q12.3

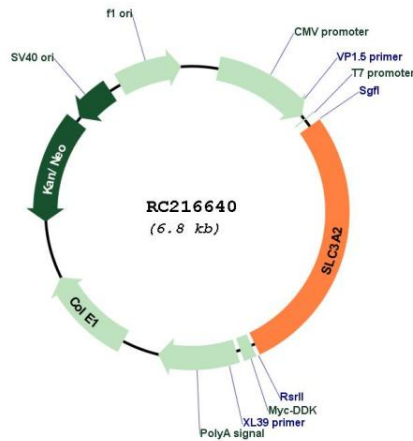
Domains: alpha-amylase, Amy

Protein Families: Transmembrane

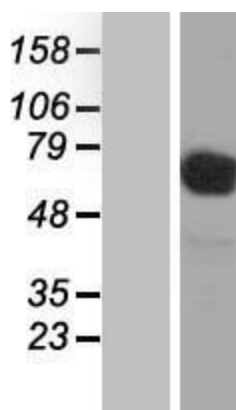
MW: 68 kDa

Gene Summary: This gene is a member of the solute carrier family and encodes a cell surface, transmembrane protein. The protein exists as the heavy chain of a heterodimer, covalently bound through di-sulfide bonds to one of several possible light chains. The encoded transporter plays a role in regulation of intracellular calcium levels and transports L-type amino acids. Alternatively spliced transcript variants, encoding different isoforms, have been characterized. [provided by RefSeq, Nov 2010]

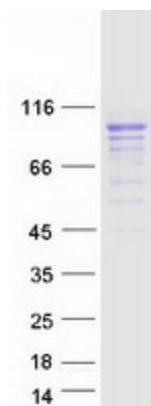
Product images:



Circular map for RC216640



Western blot validation of overexpression lysate (Cat# [LY419347]) using anti-DDK antibody (Cat# [TA50011-100]). Left: Cell lysates from untransfected HEK293T cells; Right: Cell lysates from HEK293T cells transfected with RC216640 using transfection reagent MegaTran 2.0 (Cat# [TT210002]).



Coomassie blue staining of purified SLC3A2 protein (Cat# [TP316640]). The protein was produced from HEK293T cells transfected with SLC3A2 cDNA clone (Cat# RC216640) using MegaTran 2.0 (Cat# [TT210002]).