

## Product datasheet for **RC216636**

### DDX42 (NM\_203499) Human Tagged ORF Clone

#### Product data:

Product Type:	Expression Plasmids
Product Name:	DDX42 (NM_203499) Human Tagged ORF Clone
Tag:	Myc-DDK
Symbol:	DDX42
Synonyms:	DDX42P; RHELP; RNAHP; SF3B8; SF3b125
Mammalian Cell Selection:	Neomycin
Vector:	pCMV6-Entry (PS100001)
E. coli Selection:	Kanamycin (25 ug/mL)



[View online »](#)

**ORF Nucleotide Sequence:**

>RC216636 representing NM\_203499  
 Red=Cloning site Blue=ORF Green=Tags(s)

TTTTGTAATACGACTCACTATAGGGCGGCCGGGAATTCGTCGACTGGATCCGGTACCGAGGAGATCTGCC  
 GCC**CGGATCGCC**

ATGAACTGGAATAAAGGTGGTCCTGGCACTAAGCGAGGATTTGGCTTTGGAGTTTTGCCATCAGTGCTG  
 GGAAAAAGGAGGAACCCAACTCCACAGCAGTCCACAGTGCCTTTGGGGCAACCAGCTCTTCTCTGG  
 ATTTGGAAAGTCAGCTCCACCACAGCTTCTTCTTCTACAAAATTGGATCTAAGCGGGCAACTTTGAT  
 GAAGAAAAATGCCTATTTTGAAGATGAGGAAGAAGATTCTAGCAACGTTGATTTACCTTACATTCCTGCTG  
 AAAACTCACCAACTCGCCAGCAATTCATTCCAAGCCAGTAGATTCTGACAGCGATGATGATCCCTTGGG  
 GGCATTTCATGGCTGAAGTGGAGGATCAGGCAGCTAGAGACATGAAGAGGCTTGAAGAAAAGGACAAGGAA  
 AGAAAAACGTAAGGGTATTTCGAGATGACATTGAAGAGGAAGATGACCAAGAAGCTTATTTTCGATACA  
 TGGCAGAAAACCAACTGCTGGTGTGGTTCAGGAGGAAGGAAGACAATCTAGAATATGATAGTGACGG  
 AAATCCAATTGCACCTACCAAAAAATCATTGATCCTCTTCCCCCATTGATCATTTCAGAGATTGACTAT  
 CCACCATTGAAAAAACTTTTACAATGAGCATGAAGAGATAACCAACCTCACTCCACAGCAGTTAATAG  
 ATCTCCGGCATAAGCTCAATCTTCGGGTCTCTGGTGTGCACCTCTAGACCAGGAAGTAGCTTTGTCTCA  
 TTTTGGGTTTGACGAACAACTTATGCACCAGATTTCGAAATCTGAATACACACAGCCCACTCCAATACAG  
 TGCCAGGGTGTGCCTGTGGCATTAAAGTGGTAGAGACATGATTGGTATTGCCAAAACAGGTAGTGGGAAAA  
 CTGCAGCCTTCATTTGGCCCATGTTGATTCATATAATGGACCAGAAGGAGTTGGAACCAGGTGATGGACC  
 AATTGCAGTGATTGTGTGCCTACCAGGGAGCTTTGCCAGCAGATCCATGCAGAATGTAAGCGGTTTGGG  
 AAAGCATATAATCTTCGATCAGTGGCCGTATATGGAGGAGGAGTATGTGGGAGCAGGCCAAGGCCCTTC  
 AGGAGGGGGCAGAGATTGTGTGTACCCAGGTCGACTGATAGATCATGTGAAAAAGAAAGCTACCAA  
 TCTTCAAAGAGTCTTTACCTTGTGTTTGTATGAAGCAGATCGAATGTTTGACATGGGATTTGAGTACCAA  
 GTTCGATCCATAGCAAGTCATGTTTCGCTGACAGGCAGACTCTTTATTTAGTGAACCTTTTCGGGAAGA  
 AGATTGAAAAGTTGGCCAGAGACATCCTGATCGACCCTATTTCGAGTGGTGCAGGGAGATATTGGAGAGGC  
 AAATGAAGATGTGACACAGATTGTGGAGATTCTCCATTCTGGACCTAGTAAATGGAAGTGGCTTACCCGG  
 CGTCTGGTAGAATTTACCTCTTCAGGGAGTGTCTCTCTTTGTTACTAAAAAGCCAATGCTGAAGAGC  
 TAGCGAATAACCTTAAACAGGAGGGTCATAATCTTGGGCTGCTCCATGGGGATATGGATCAGAGTGAGAG  
 AAACAAGGTCAATTCAGACTTTAAGAAAAAGGACATCCCAGTCTGGTGGCCACAGATGTTGCAGCCCGT  
 GGTCTGGACATTCCTTCAATTAAGACTGTCATTAATATGATGTGCACGAGACATTGATACCCACACGC  
 ATAGGATTGGCCGCACAGGAAGAGCGGGTGAGAAAGGTGTGGCCTATACCTACTCACTCCAAGGACAG  
 CAATTTTGTGGTGCCTGGTCCGGAATTTGGAAGGAGCCAATCAACACGTTTCTAAGGAACTCCTAGAT  
 CTGGCAATGCAGAATGCCTGGTTTCGAAATCTCGATTCAAAGGAGGGAAAGGAAAAAGCTGAACATTG  
 GTGGAGGAGGCCTAGGCTACAGGGAGCGGCCTGGCCTGGGCTCTGAGAACATGGATCGAGGAAATAACAA  
 TGTAATGAGCAATTATGAGGCCTACAAGCCTCCACAGGAGCTATGGGAGATCGACTAACGGCAATGAAA  
 GCAGCTTTCAGTCACAGTACAAGAGTCACTTTGTTGCAGCCAGTTTAAAGTAATCAGAAGGCTGGAAGTT  
 CTGCTGCTGGGCAAGTGGTGGACTAGTGCAGGGAGCTTGAATCTGTTCCAATAACTCAGCACAAACA  
 GGGCCATAACAGTCTGACAGCCCGTACCAGTCCCGCAAGGGCATCCAGGCTTTGGCAATACTGGC  
 AACATCAGTGGTGCCCTGTGACCTACCCGTCTGCCGGAGCCCAAGGAGTCAACAACACAGCTTCAGGGGA  
 ATAAACAGCCGAGAAGGGACTGGGGCAGCAACGGGAAAAGAGAGAGATATACTGAGAACCAGGGCAGCAG  
 CCGTCACAGTCACGGAGAGACTGGCAATCGGCATAGCGATAGTCCACGTACGGAGATGGTGGTCCGAT  
 GGAGATGGATACCGCCATCCAGAAAGCAGCAGCCGTCATACTGATGGCCATCGGCACGGGAGAACAGAC  
 ATGGAGGAAGCGCAGGCCGGCATGGGGAGAACCAGGGTGCAAATGATGGTGGAAATGGGGAAAGCAGGAA  
 AGAAGCTTTTAACTCGTGAAGCAAGATGGAGCCCAAGTGAACCCAAAGTGGACAGCAGCAAGATGGAC  
 AAGGTGGACAGCAAGACAGATAAGACAGCTGACGGCTTTGCTGTCCAGAGCCGCTAAACGCAAGAAAA  
 GTCGATGGGACAGT

**ACGCGT**ACGCGGCCGCTCGAGCAGAACTCATCTCAGAAGAGGATCTGGCAGCAAATGATATCCTGGATT  
 ACAAGGATGACGACGATAAGGTTTAA

**Protein Sequence:** >RC216636 representing NM\_203499  
 Red=Cloning site Green=Tags(s)

MNWNKGGPGTKRFGFGGFAISAGKKEEPKLPQQSHSAFGATSSSSGFGKSAPPQLPSFYKIGSKRANFD  
 EENAYFEDEEEDSSNDLPYIPAENSPTRQQFHSKPVDSDDDDLEAFMAEVEDQAARDMKRLEEKDKE  
 RKNVKGIRDDIEEEDDQEAYFRYMAENPTAGVVQEEEEEDNLEYSDGNPIAPTKKIIDPLPIDHSEIDY  
 PPFKFNFYNEHEEITNLTPQQIDLRHKLNLRVSGAAPPRPGSSFAHFGFDEQLMHQIRKSEYTPQPTIQ  
 CQGVPPVALSGRDMIGIAKTGSGKTAAFIWPLIHIIMDQKELEPGDGPIAVIVCPRELCCQIHAECKRFG  
 KAYNLRVAVYGGGSMWEQAKALQEGAEIVVCTPGRLIDHVKKKATNLQRVSYLVFDEADRMFDMGFEYQ  
 VRSIASHVRPDRQTLLFSATFRKKIEKLARDILIDPIRVVQGDIGEANEDVTQIVEILHSGPSKWNWLTR  
 RLVEFTSSGSVLLFVTKKANAEEANLNKQEGHNLGLLHGMDQSERNKVISDFKDKDIPVLVATDVAAR  
 GLDIPSIKTVINYDVARIDTHTHRIGRTGRAGEKGVAYTLLTPKDSNFAAGLVRNLEGANQHVSKELLD  
 LAMQNAWFRKSRFKGGKGLNIGGGGLGYRERPLGSENMDRGNNVMSNYEAYKPSTGAMGDRLTAMK  
 AAFQSQYKSHFVAASLSNQKAGSSAAGASGWTAGSLNSVPTNSAQGHNSPDPVTSAAKGIPIFGNTG  
 NISGAPVTYPSAGAQQVNNASGNNNSREGTGGNKGKRRERYTENRGSRRHSHGETGNRHSDSPRHGDGGRH  
 GDGYRHPESRRHTDGHHRHGENRHGGSAGRHHGENRGANDGRNGESRKEAFNRESKMEPKMEPKVDSSKMD  
 KVDSKTDKTADGFVPEPPKRRKSRWDS

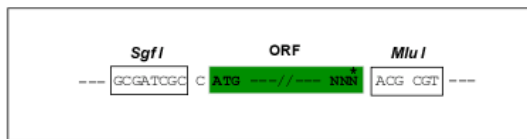
TRTRPLEQKLISEEDLAANDILDYKDDDDKV

**Chromatograms:** [https://cdn.origene.com/chromatograms/mk8101\\_c05.zip](https://cdn.origene.com/chromatograms/mk8101_c05.zip)

**Restriction Sites:** SgfI-MluI

**Cloning Scheme:**

Cloning sites used for ORF Shuttling:



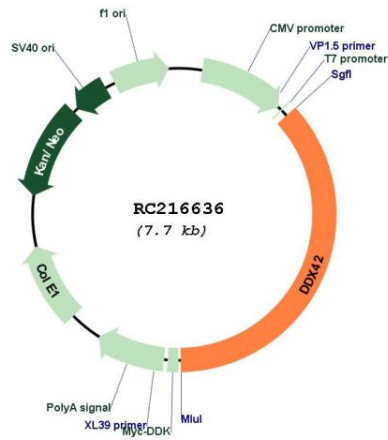
\* The last codon before the Stop codon of the ORF

**ACCN:** NM\_203499

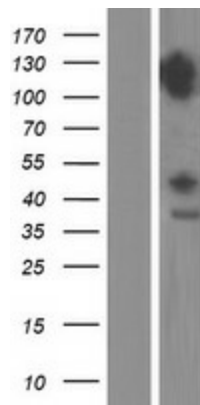
**ORF Size:** 2814 bp

<b>OTI Disclaimer:</b>	The molecular sequence of this clone aligns with the gene accession number as a point of reference only. However, individual transcript sequences of the same gene can differ through naturally occurring variations (e.g. polymorphisms), each with its own valid existence. This clone is substantially in agreement with the reference, but a complete review of all prevailing variants is recommended prior to use. <a href="#">More info</a>
<b>OTI Annotation:</b>	This clone was engineered to express the complete ORF with an expression tag. Expression varies depending on the nature of the gene.
<b>Components:</b>	The ORF clone is ion-exchange column purified and shipped in a 2D barcoded Matrix tube containing 10ug of transfection-ready, dried plasmid DNA (reconstitute with 100 ul of water).
<b>Reconstitution Method:</b>	<ol style="list-style-type: none"><li>1. Centrifuge at 5,000xg for 5min.</li><li>2. Carefully open the tube and add 100ul of sterile water to dissolve the DNA.</li><li>3. Close the tube and incubate for 10 minutes at room temperature.</li><li>4. Briefly vortex the tube and then do a quick spin (less than 5000xg) to concentrate the liquid at the bottom.</li><li>5. Store the suspended plasmid at -20°C. The DNA is stable for at least one year from date of shipping when stored at -20°C.</li></ol>
<b>RefSeq:</b>	<a href="#">NM_203499.3</a>
<b>RefSeq Size:</b>	3943 bp
<b>RefSeq ORF:</b>	2817 bp
<b>Locus ID:</b>	11325
<b>UniProt ID:</b>	<a href="#">Q86XP3</a>
<b>Cytogenetics:</b>	17q23.3
<b>Protein Pathways:</b>	Spliceosome
<b>MW:</b>	103 kDa
<b>Gene Summary:</b>	This gene encodes a member of the Asp-Glu-Ala-Asp (DEAD) box protein family. Members of this protein family are putative RNA helicases, and are implicated in a number of cellular processes involving alteration of RNA secondary structure such as translation initiation, nuclear and mitochondrial splicing, and ribosome and spliceosome assembly. Members of this family are believed to be involved in embryogenesis, spermatogenesis, and cellular growth and division. Two transcript variants encoding the same protein have been identified for this gene. [provided by RefSeq, Jul 2008]

Product images:



Circular map for RC216636



Western blot validation of overexpression lysate (Cat# [LY404249]) using anti-DDK antibody (Cat# [TA50011-100]). Left: Cell lysates from untransfected HEK293T cells; Right: Cell lysates from HEK293T cells transfected with RC216636 using transfection reagent MegaTran 2.0 (Cat# [TT210002]).