

## Product datasheet for **RC216628**

### **PLAG1 (NM\_002655) Human Tagged ORF Clone**

#### **Product data:**

Product Type:	Expression Plasmids
Product Name:	PLAG1 (NM_002655) Human Tagged ORF Clone
Tag:	Myc-DDK
Symbol:	PLAG1
Synonyms:	PSA; SGPA; SRS4; ZNF912
Mammalian Cell Selection:	Neomycin
Vector:	pCMV6-Entry (PS100001)
E. coli Selection:	Kanamycin (25 ug/mL)



[View online »](#)

**ORF Nucleotide Sequence:**

>RC216628 ORF sequence  
 Red=Cloning site Blue=ORF Green=Tags(s)

TTTTGTAATACGACTCACTATAGGGCGGCCGGAATTCGTCGACTGGATCCGGTACCGAGGAGATCTGCC  
 GCC**CGGATCGCC**

ATGGCCACTGTCAATTCCTGGTGATTTGTCAGAAGTAAAGATACCCAGAAAGTCCCTTCAGGAAACGTA  
 AGCGTGGTGAAACCAAACCAAGAAAAAACTTCCCTTGCCAACTGTGTGACAAGGCCTTAAACAGTGTGA  
 GAAATTAAGGTTCACTCCTACTCTCACACAGGAGAGAGGCCCTACAAGTGCATACAACAAGACTGCACC  
 AAGGCCTTTGTTTCTAAGTACAAATTACAAAGGCACATGGCTACTCATTCTCCTGAGAAAACCCACAAGT  
 GTAATTATTGTGAGAAAAATGTTTCACCGAAAGATCATCTGAAGAATCACCTCCATACACACGACCTAA  
 CAAAGAGACGTTAAGTGCAGAAGTGTGGCAAGAACTACAATACCAAGCTTGGATTTAAACGCTCACTTG  
 GCCTTGCATGCCGCAACAAGTGGTGACCTCACCTGTAAGGTATGTTTGCAAACCTTTGAAAGCACGGGAG  
 TGCTTCTGGAGCACCTTAAATCTCATGCAGGCAAGTCGTCTGGTGGGGTTAAAGAAAAAAGCACCAGTG  
 CGAACATTGTGATCGCCGTTCTACACCCGAAAGGATGTCGGGAGACACATGGTGGTGCACACTGGAAGA  
 AAGGACTTCTCTGTGAGTATTGTGCACAGAGATTTGGGCGAAAGGATCACCTGACTCGACATATGAAGA  
 AGAGTCACAATCAAGAGCTTCTGAAGGTCAAAACAGAACCAGTGGATTTCTTGACCCATTTACCTGCAA  
 TGTGTCTGTGCCTATAAAAGACGAGCTCCTCCGGTGATGTCCTTACCTCCAGTGAAGTGTATCAAAG  
 CCATTCACAAACACTTTGCAGTTAAACCTCTACAACACTCCATTTAGTCCATGCAGAGCTCGGGATCTG  
 CCCACCAATGATCACAACCTTACCTTTGGGAATGACATGCCCAATAGATATGGACACTGTTTATCCCTC  
 TCACCACCTTTCTTTCAAATATCCGTTCACTTCTACCTCATATGCAATTTCTATTCTGAAAAAGAACAG  
 CCATTAAGGGGGAAATTGAGAGTTACCTGATGGAGTTACAAGGTGGCGTGCCTCTTATCCCAAGATT  
 CTAAGCATCGTCATCATCTAAGCTAGGTTGGATCCTCAGATTGGTCCCTAGATGATGGTGCAGGAGA  
 CCTCTCCCTATCCAAAAGCTCTATCTCCATCAGTGACCCCTAAACACACCAGCATTGGATTTTTCTCAG  
 TTGTTTAAATTTACACTTTAAATGGTCTCCCTATAATCCTCTATCAGTGGGGAGCCTTGAATGAGCT  
 ATTCCAGGAAGAAGCACATTCTTCTGTTTCCAGCTCCCCCACAAACACAGGATCTTCAGGATCTGCG  
 AAACACTATAGGGCTTGGGTCTCTGCACTCACTGTGAGCAGCTTACCAGCAGTTAAGCACAAAGTACC  
 ACCCTCCACGTTTCCATCAAGCTTTTCAG

**ACGCGT**ACGCGGCCGCTCGAGCAGAAACTCATCTCAGAAGAGGATCTGGCAGCAAATGATATCCTGGATT  
 ACAAGGATGACGACGATAAGGTTTAA

**Protein Sequence:**

>RC216628 protein sequence  
 Red=Cloning site Green=Tags(s)

MATVIPGDLSEVRDTPQKVPVSGKRKRGETKPRKNFPCQLCDKAFNSVEKLVHSYSHTGERPYKCIQQDCT  
 KAFVSKYKLRHMATHSPEKTHKCNCEKMFHRKDLKNHLHHDHPNKEFKCEECGKNYNTKLGFKRHL  
 ALHAATSGDLTCKVCLQTFESTGVLLLEHLKSHAGKSSGGVKEKKHQCEHCDRRFYTRKDVRRHVMVHTGR  
 KDFLCQYCAQRFGRKDHLTRHMKKSHNQELLKVKTEPVDFLDPFTCNVSVPIKDELLPVMSLPSSELLSK  
 PFTNTLQLNLYNTPFQSMQSSGSAHQMITLPLGMTCPIDMDTVHPSHLSFKYPPFSSTSYAISIPKEQ  
 PLKGEIESYLMELQGGVPSSSQDSQASSSSKLGDPQIGSLDDGAGDLSLSKSSISISDPLNTPALDFSQ  
 LFNFIPLNGPPYNPLSVGSLGMSYSQEEAHSSVSQLPPQTQDLQDPANTIGLGSLSLSAAFTSSLSTST  
 TLPRFHQAFQ

**TR**TRPLEQKLISEEDLAANDILDYKDDDDKV

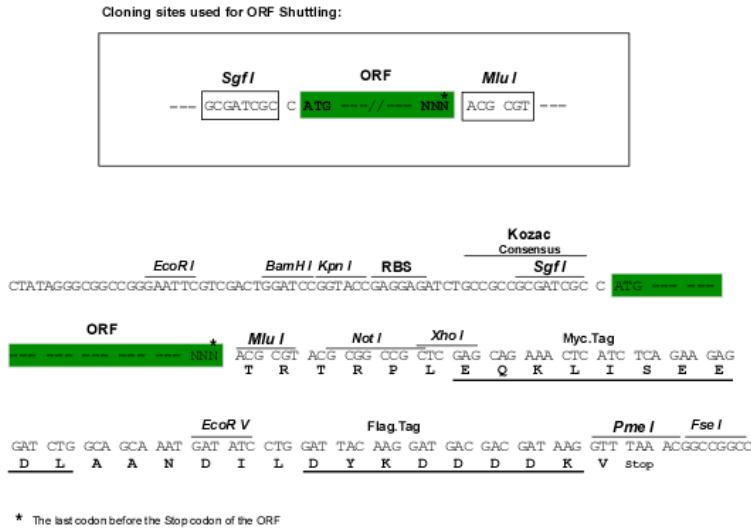
**Chromatograms:**

[https://cdn.origene.com/chromatograms/mk6584\\_b12.zip](https://cdn.origene.com/chromatograms/mk6584_b12.zip)

**Restriction Sites:**

Sgfl-Mlul

**Cloning Scheme:**



**ACCN:** NM\_002655

**ORF Size:** 1500 bp

**OTI Disclaimer:** The molecular sequence of this clone aligns with the gene accession number as a point of reference only. However, individual transcript sequences of the same gene can differ through naturally occurring variations (e.g. polymorphisms), each with its own valid existence. This clone is substantially in agreement with the reference, but a complete review of all prevailing variants is recommended prior to use. [More info](#)

**OTI Annotation:** This clone was engineered to express the complete ORF with an expression tag. Expression varies depending on the nature of the gene.

**Components:** The ORF clone is ion-exchange column purified and shipped in a 2D barcoded Matrix tube containing 10ug of transfection-ready, dried plasmid DNA (reconstitute with 100 ul of water).

- Reconstitution Method:**
1. Centrifuge at 5,000xg for 5min.
  2. Carefully open the tube and add 100ul of sterile water to dissolve the DNA.
  3. Close the tube and incubate for 10 minutes at room temperature.
  4. Briefly vortex the tube and then do a quick spin (less than 5000xg) to concentrate the liquid at the bottom.
  5. Store the suspended plasmid at -20°C. The DNA is stable for at least one year from date of shipping when stored at -20°C.

**RefSeq:** [NM\\_002655.3](#)

**RefSeq Size:** 7338 bp

**RefSeq ORF:** 1503 bp

**Locus ID:** 5324

**UniProt ID:** [Q6DJT9](#)

**Cytogenetics:** 8q12.1

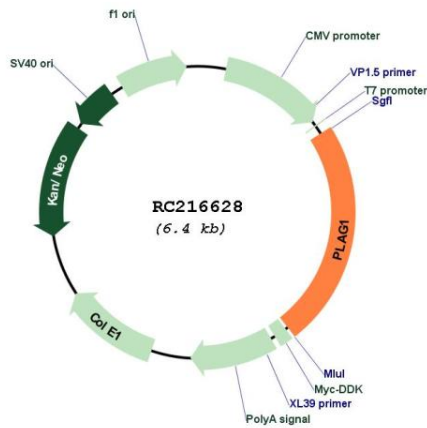
**Domains:** zf-C2H2

**Protein Families:** Transcription Factors

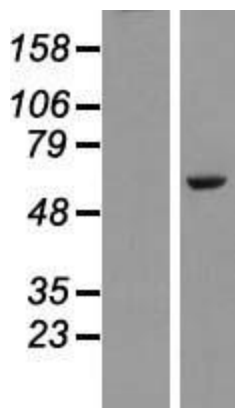
**MW:** 55.9 kDa

**Gene Summary:** Pleomorphic adenoma gene 1 encodes a zinc finger protein with 2 putative nuclear localization signals. PLAG1, which is developmentally regulated, has been shown to be consistently rearranged in pleomorphic adenomas of the salivary glands. PLAG1 is activated by the reciprocal chromosomal translocations involving 8q12 in a subset of salivary gland pleomorphic adenomas. Three transcript variants encoding two different isoforms have been found for this gene. [provided by RefSeq, Jul 2008]

**Product images:**



Circular map for RC216628



Western blot validation of overexpression lysate (Cat# [LY426500]) using anti-DDK antibody (Cat# [TA50011-100]). Left: Cell lysates from untransfected HEK293T cells; Right: Cell lysates from HEK293T cells transfected with [RC225859] using transfection reagent MegaTran 2.0 (Cat# [TT210002]).