

Product datasheet for RC216627

PHR1 (PLEKHB1) (NM_021200) Human Tagged ORF Clone

Product data:

Product Type:	Expression Plasmids
Product Name:	PHR1 (PLEKHB1) (NM_021200) Human Tagged ORF Clone
Tag:	Myc-DDK
Symbol:	PHR1
Synonyms:	KPL1; PHR1; PHRET1
Mammalian Cell Selection:	Neomycin
Vector:	pCMV6-Entry (PS100001)
E. coli Selection:	Kanamycin (25 ug/mL)
ORF Nucleotide Sequence:	>RC216627 representing NM_021200 Red=Cloning site Blue=ORF Green=Tags(s)

TTTTGTAATACGACTCACTATAGGGCGGCCGGAATTCGTCGACTGGATCCGGTACCGAGGAGATCTGCC
GCC**CGATCGCC**

ATGAGCCCTGCAGCCCCGGTCCCGCCTGACTCCGCTCTGGAAAGTCCTTTGAAGAAATGGCCCTGGTGA
GGGGCGGCTGGCTGTGGAGACAGAGCTCCATCCTCCGCCGCTGGAAGCGGAAGTGGTTTGCCTGTGGCT
GGACGGGACCTGGGATACTACCACGATGAGACAGCGCAGGACGAGGAGGACCGTGTGCTCATCCACTTC
AATGTCCGTGACATAAAGATCGGCCAGAGTGCCATGATGTGCAGCCCCAGAGGGCCGGAGCCGAGATG
GCCTGCTGACTGTGAACCTACGGGAAGGGCGCCGCTGCACCTCTGTGCGGAGACCAAGGATGATGCCCT
AGCATGGAAGACAGCACTGCTGGAGGCAAACCTCCACCCCGGCCCCAGCTGGAGCCACCGTCCCTCCAGG
AGCCCGCGGGTTTGTCCAAGGTCAGGTGTGTGACCCGCTCGTGGAGCCCTGTAAGGTTGAGAGGCGGA
TCTGGGTGCGCGTCTACAGCCGTACCAAGACTACTACGAGGTGGTGCSCCAATGCACACGAGGCCAC
GTATGTCCGACGCTACTACGGACCGCCCTACGCAGGCCCTGGCGTGACGCACGTGATAGTGCGGGAGGAT
CCCTGCTACAGCGCCGGCGCCCTCTGGCCATGGGCATGCTTGCGGGAGCCGCACTGGGGCGCGCTGG
GCTCGCTCATGTGGTCCGCTGCTGGTTC

ACGCGTACGCGGCCGCTCGAGCAGAACTCATCTCAGAAGAGGATCTGGCAGCAAATGATATCCTGGATT
ACAAGGATGACGACGATAAGGTTTAA



[View online »](#)

Protein Sequence: >RC216627 representing NM_021200
 Red=Cloning site Green=Tags(s)

MSPAAPVPPDSALESPFEEMALVRGGWLWRQSSILRRWKRNFALWLDGTLGYYHDETAQDEEDRVL IHF
 NVRDIKIGPECHDVQPPEGRSRDGLLTVNLREGGRLHLCAETKDDALAWKTALLEANSTPAPAGATVPPR
 SRRVCSKVRVCVTRSWSPCKVERRIWRVYSPYQDYIEVVPNAHEATYVRSYYGPPYAGPGVTHIVRED
 PCYSAGAPLAMGMLAGAATGAALGSLMWSPCWF

TRTRPLEQKLISEEDLAANDILDYKDDDDKV

Chromatograms: https://cdn.origene.com/chromatograms/mk8017_b10.zip

Restriction Sites: SgfI-MluI

Cloning Scheme:

Cloning sites used for ORF Shuttling:



* The last codon before the Stop codon of the ORF

ACCN: NM_021200

ORF Size: 729 bp

OTI Disclaimer: The molecular sequence of this clone aligns with the gene accession number as a point of reference only. However, individual transcript sequences of the same gene can differ through naturally occurring variations (e.g. polymorphisms), each with its own valid existence. This clone is substantially in agreement with the reference, but a complete review of all prevailing variants is recommended prior to use. [More info](#)

OTI Annotation: This clone was engineered to express the complete ORF with an expression tag. Expression varies depending on the nature of the gene.

Components: The ORF clone is ion-exchange column purified and shipped in a 2D barcoded Matrix tube containing 10ug of transfection-ready, dried plasmid DNA (reconstitute with 100 ul of water).

- Reconstitution Method:**
1. Centrifuge at 5,000xg for 5min.
 2. Carefully open the tube and add 100ul of sterile water to dissolve the DNA.
 3. Close the tube and incubate for 10 minutes at room temperature.
 4. Briefly vortex the tube and then do a quick spin (less than 5000xg) to concentrate the liquid at the bottom.
 5. Store the suspended plasmid at -20°C. The DNA is stable for at least one year from date of shipping when stored at -20°C.

RefSeq: [NM_021200.3](#)

RefSeq Size: 2402 bp

RefSeq ORF: 732 bp

Locus ID: 58473

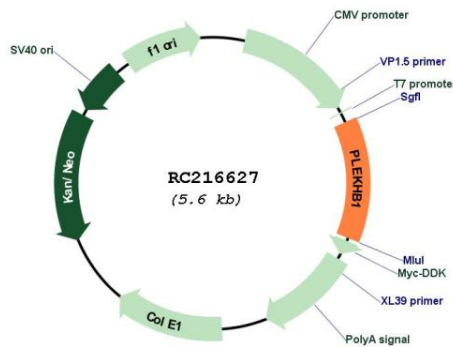
UniProt ID: [Q9UF11](#)

Cytogenetics: 11q13.4

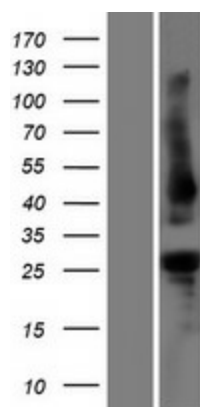
Domains: PH

MW: 27 kDa

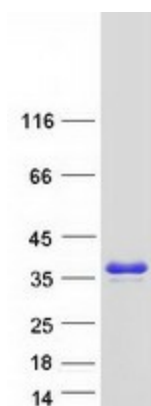
Product images:



Circular map for RC216627



Western blot validation of overexpression lysate (Cat# [LY412039]) using anti-DDK antibody (Cat# [TA50011-100]). Left: Cell lysates from untransfected HEK293T cells; Right: Cell lysates from HEK293T cells transfected with RC216627 using transfection reagent MegaTran 2.0 (Cat# [TT210002]).



Coomassie blue staining of purified PLEKHB1 protein (Cat# [TP316627]). The protein was produced from HEK293T cells transfected with PLEKHB1 cDNA clone (Cat# RC216627) using MegaTran 2.0 (Cat# [TT210002]).