

Product datasheet for RC216617

CNFN (NM_032488) Human Tagged ORF Clone

Product data:

Product Type: Expression Plasmids
Product Name: CNFN (NM_032488) Human Tagged ORF Clone
Tag: Myc-DDK
Symbol: CNFN
Synonyms: PLAC8L2
Mammalian Cell Selection: Neomycin
Vector: pCMV6-Entry (PS100001)
E. coli Selection: Kanamycin (25 ug/mL)
ORF Nucleotide Sequence: >RC216617 ORF sequence
Red=Cloning site Blue=ORF Green=Tags(s)

TTTTGTAATACGACTCACTATAGGGCGGCCGGAATTCGTCGACTGGATCCGGTACCGAGGAGATCTGCC
GCC**CGATCGCC**

ATGTCCTACCCTGTGACCAGTCAGCCCCAGTGCGCCACCACCAGCTGCTACCAGACCCAGCTCAGTGACT
GGCACACAGGTCTCACGGACTGCTGCAACGACATGCCTGTCTGTCTGTGCGGCACTTTGTCTCTGTG
CCTTGCTGCCGATCTCCGACGACTTTGGCGAGTGTCTGCTGCGGCCCTACCTGCCGGAGGCCTGCAC
TCCATCCGACCCGCATGCGGGAGCGCTACCACATCCAGGGCTCCGTCGGGCACGACTGGCGGCCCTCA
CCTTTGTCTGCCCTGCGCCCTCTGCCAGATGGCGCGGGAAGTGAAGATCCGAGAG

ACGCGTACGCGGCCGCTCGAGCAGAAACTCATCTCAGAAGAGGATCTGGCAGCAAATGATATCCTGGATT
ACAAGGATGACGACGATAAGGTTTAA

Protein Sequence: >RC216617 protein sequence
Red=Cloning site Green=Tags(s)

MSYPVTSQPQCATTSCYQTLSDWHTGLTDCNDMPVCLCGTFAPLCLACRISDDFGECCCAPYLPGLLH
SIRTGMRERYHIQGSVGHWAALTFCLPCALCQMARELKIRE

TRTRPLEQKLISEEDLAANDILDYKDDDDKV

Chromatograms: https://cdn.origene.com/chromatograms/mk6449_f03.zip

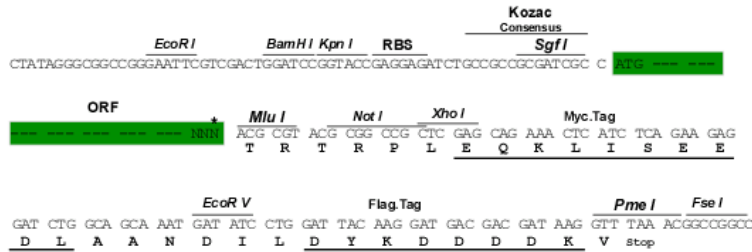
Restriction Sites: SgfI-MluI



[View online »](#)

Cloning Scheme:

Cloning sites used for ORF Shutting:



* The last codon before the Stop codon of the ORF

ACCN: NM_032488

ORF Size: 336 bp

OTI Disclaimer: The molecular sequence of this clone aligns with the gene accession number as a point of reference only. However, individual transcript sequences of the same gene can differ through naturally occurring variations (e.g. polymorphisms), each with its own valid existence. This clone is substantially in agreement with the reference, but a complete review of all prevailing variants is recommended prior to use. [More info](#)
OTI Annotation: This clone was engineered to express the complete ORF with an expression tag. Expression varies depending on the nature of the gene.

Components: The ORF clone is ion-exchange column purified and shipped in a 2D barcoded Matrix tube containing 10ug of transfection-ready, dried plasmid DNA (reconstitute with 100 ul of water).

Reconstitution Method:

1. Centrifuge at 5,000xg for 5min.
2. Carefully open the tube and add 100ul of sterile water to dissolve the DNA.
3. Close the tube and incubate for 10 minutes at room temperature.
4. Briefly vortex the tube and then do a quick spin (less than 5000xg) to concentrate the liquid at the bottom.
5. Store the suspended plasmid at -20°C. The DNA is stable for at least one year from date of shipping when stored at -20°C.

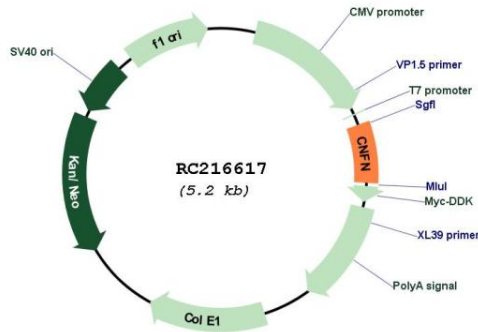
RefSeq: [NM_032488.4](#)
RefSeq Size: 543 bp

RefSeq ORF: 339 bp

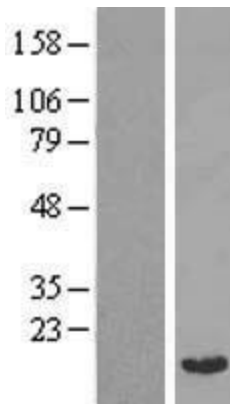
Locus ID: 84518

UniProt ID: [Q9BYD5](#)
Cytogenetics: 19q13.2
MW: 12.4 kDa
Gene Summary: Part of the insoluble cornified cell envelope (CE) of stratified squamous epithelia. [UniProtKB/Swiss-Prot Function]

Product images:



Circular map for RC216617



Western blot validation of overexpression lysate (Cat# [LY410115]) using anti-DDK antibody (Cat# [TA50011-100]). Left: Cell lysates from untransfected HEK293T cells; Right: Cell lysates from HEK293T cells transfected with RC216617 using transfection reagent MegaTran 2.0 (Cat# [TT210002]).