

## Product datasheet for **RC216614**

### NPRL3 (NM\_001077350) Human Tagged ORF Clone

#### Product data:

Product Type:	Expression Plasmids
Product Name:	NPRL3 (NM_001077350) Human Tagged ORF Clone
Tag:	Myc-DDK
Symbol:	NPRL3
Synonyms:	C16orf35; CGTHBA; FFEVF3; HS-40; MARE; NPR3; RMD11
Mammalian Cell Selection:	Neomycin
Vector:	pCMV6-Entry (PS100001)
E. coli Selection:	Kanamycin (25 ug/mL)



[View online »](#)

**ORF Nucleotide Sequence:**

>RC216614 representing NM\_001077350  
 Red=Cloning site Blue=ORF Green=Tags(s)

TTTTGTAATACGACTCACTATAGGGCGGCCGGAATTCGTCGACTGGATCCGGTACCGAGGAGATCTGCC  
 GCC**CGGATCGCC**

ATGCGGGACAACACCAGCCCATCAGCGTGATTCTGGTGAGCTCGGGGAGCAGGGCAATAAGCTGCTGT  
 TCAGGTACCCCTTCCAGAGAAGCCAGGAGCACCCGGCGTCCAGACAAGTAAGCCGCGTAGCAGATACGC  
 TGCCAGCAACACGGGCGACCATGCTGATGAGCAGGACGGCGATTCCAGGTTTTTCAGATGTTATTCTGGCA  
 ACAATTTTGGCAACCAAGTCTGAAATGTGTGGCAAAAATTTGAACTGAAGATTGATAATGTGCGATTTG  
 TTGGGCACCCAACACTGCTACAGCATGCTCTGGGGCAGATCTCCAAAACAGATCCTTCCCGAAGAGGGA  
 AGCACCTACTATGATTCTTTTTAATGTGGTGTTCGACTGAGGGCCAACGCAGACCCGTCAGTGATAAAC  
 TGTCTGCATAACCTGTCCCGTGTATCGCCACCGTGTGCAGCACGAGGAGCGCCGCTGCCAGTACCTCA  
 CCCGGGAGGCCAAGCTGATCCTGGCGCTCCAGGATGAGGTGTCCGCCATGGCTGATGAAATGAAGTCC  
 TCAGTCCCATTCCATCACATCTGCCAAGTGAAGCTGGCCAGGGACCTCAAGGAAGCTTATGACAGC  
 CTGTGCACGTCCGGCGTAGTTCGGCTTACATCAACAGCTGGCTGGAGGTGAGCTTCTGCCTGCCCCACA  
 AGATCCACTATGCGGCCTCCAGTCTGATCCCCCAGAGGCCATCGAACGGAGCCTGAAAGCCATCCGCC  
 CTACCATGCCCTGCTGCTGCTCAGTGATGAGAAGTCTTGTGGGTGAGCTTCTATTGACTGCTCCCT  
 GCCCTAGTGCGGGTGATCAAGACCACATCTGCTGTGAAGAACCTGCAGCAGCTAGCCCAAGATGCGGACC  
 TGGCCTTGTGTCAGGTTTTCCAGCTTGCAGTCTCTGGTGTACTGGGGCAAGGCCATCATCTACCTACCC  
 GCTGTGTGAGAACACGTCTACATGCTGTCTCCAATGCCAGCGTATGTCTGTACTCCCCGCTGGCCGAG  
 CAGTTCTCCACCAGTCCCATCTACGACTGCCGTCGGTCTTGTCCAAGTCTCCTTCCCGGTCTCCT  
 TGTGAGAATTTAGGAATCCCCTGGCCCCGCTGTGCAGGAGACCCAGCTCATCCAGATGGTGTGGAT  
 GCTGCAGCGCCGCTTCTCATCCAGCTGCACACCTATGTCTGCCTGATGGCCTCACCCAGCGAGGAGGAG  
 CCCCGTCCGCGAGAGGACGACGCTCCCTTCACTGCCCGGGTGGCGGTGCGAGCCTCAGCACGCCAACG  
 CCCTCAGCTTTGGCTCCCCAACAGCAGCGATGACATGACCCTACCAGCCCCAGCATGGACAACTCCAG  
 CGCAGAGCTACTTCCAGCGGGACTCGCCACTGAACCAGAGGATGACGGAGAACCTGCTGGCCAGCCTG  
 TCGGAGCATGAACGCGCAGCCATCCTCAGTGTACCCGAGCCAGAACCTGAGGACCTCCGCATGTTTG  
 CCAGGCTCCTTCACTACTCCGCGGCCGCCACCACCTGGAGGAGATTATGTACAACGAGAACACGCGGCG  
 CTCCAGCTGCTCATGCTGTTTGACAAGTCCGACGCGTGTGGTGTGACCACCACGAGGACCCTGTC  
 ATTGCCGCTTCCAGGCTCTGCTCCC

**ACGCGT**ACGCGGGCCGCTCGAGCAGAAACTCATCTCAGAAGAGGATCTGGCAGCAAATGATATCCTGGATT  
 ACAAGGATGACGACGATAAGGTTTAA

**Protein Sequence:**

>RC216614 representing NM\_001077350  
 Red=Cloning site Green=Tags(s)

MRDNTSPISVILVSSGRGNKLLFRYPFQRSQEHASQTSKPRSRYAASNTGDHADEQDGSRFSVDVILA  
 TILATKSEMCGQKFELKIDNRFVGHPTLLQHALGQISKTDPSPKREAPTMILFNVVFALRANADPSVIN  
 CLHNLRRRIATVLQHEERRCQYL TREAKLILALQDEVSAMADGNEGQSPFHILPKCKLARDLKEAYDS  
 LCTSGVRLHINSWLEVSFCLPHKIHYAASSLIPPEAIERSLKAIRPYHALLLL SDEKSLLGELPIDCSP  
 ALVRVIKTTSAVKNLQQLAQDADLALLQVFQLAHLVYWGKAI I IYPLCENNVYMLSPNASVCLYSLAE  
 QFSHQFP SHDLPSVLAKFSLPVSLSEFRNPLAPAVQETQLIQMVVWMLQRRLLIQLHTYVCLMASPSEE  
 PRPREDDVPFTARVGGSLSTPNALSFGSPTSSDDMTL TSPSMDNSSAELLPSGDSPLNQRMENLLASL  
 SEHERAAILSVPAQNPEDLRMFARLLHYFRGRHHLLEEIMYNENTRRSQQLLMLFDKFRSVLVVTTTHEDPV  
 IAVFQALLP

**TR**TRPLEQKLISEEDLAANDILDYKDDDDKV

**Chromatograms:**

[https://cdn.origene.com/chromatograms/mk8067\\_g04.zip](https://cdn.origene.com/chromatograms/mk8067_g04.zip)

**Restriction Sites:**

Sgfl-Mlul

**Cloning Scheme:**


**ACCN:** NM\_001077350

**ORF Size:** 1707 bp

**OTI Disclaimer:** The molecular sequence of this clone aligns with the gene accession number as a point of reference only. However, individual transcript sequences of the same gene can differ through naturally occurring variations (e.g. polymorphisms), each with its own valid existence. This clone is substantially in agreement with the reference, but a complete review of all prevailing variants is recommended prior to use. [More info](#)

**OTI Annotation:** This clone was engineered to express the complete ORF with an expression tag. Expression varies depending on the nature of the gene.

**Components:** The ORF clone is ion-exchange column purified and shipped in a 2D barcoded Matrix tube containing 10ug of transfection-ready, dried plasmid DNA (reconstitute with 100 ul of water).

- Reconstitution Method:**
1. Centrifuge at 5,000xg for 5min.
  2. Carefully open the tube and add 100ul of sterile water to dissolve the DNA.
  3. Close the tube and incubate for 10 minutes at room temperature.
  4. Briefly vortex the tube and then do a quick spin (less than 5000xg) to concentrate the liquid at the bottom.
  5. Store the suspended plasmid at -20°C. The DNA is stable for at least one year from date of shipping when stored at -20°C.

**RefSeq:** [NM\\_001077350.3](#)

**RefSeq Size:** 2713 bp

**RefSeq ORF:** 1710 bp

**Locus ID:** 8131

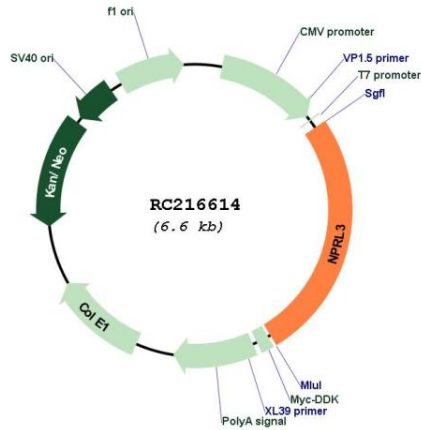
**UniProt ID:** [Q12980](#)

**Cytogenetics:** 16p13.3

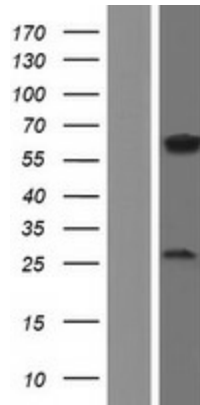
**MW:** 63.4 kDa

**Gene Summary:** The function of the encoded protein is not known. [provided by RefSeq, Aug 2011]

**Product images:**



Circular map for RC216614



Western blot validation of overexpression lysate (Cat# [LY421399]) using anti-DDK antibody (Cat# [TA50011-100]). Left: Cell lysates from untransfected HEK293T cells; Right: Cell lysates from HEK293T cells transfected with RC216614 using transfection reagent MegaTran 2.0 (Cat# [TT210002]).