

Product datasheet for RC216613

SPATIAL (TBATA) (NM_152710) Human Tagged ORF Clone

Product data:

Product Type:	Expression Plasmids
Product Name:	SPATIAL (TBATA) (NM_152710) Human Tagged ORF Clone
Tag:	Myc-DDK
Symbol:	SPATIAL
Synonyms:	C10orf27; SPATIAL
Mammalian Cell Selection:	Neomycin
Vector:	pCMV6-Entry (PS100001)
E. coli Selection:	Kanamycin (25 ug/mL)
ORF Nucleotide Sequence:	>RC216613 representing NM_152710 Red=Cloning site Blue=ORF Green=Tags(s)

TTTTGTAATACGACTCACTATAGGGCGCCGGGAATTCGTCGACTGGATCCGGTACCGAGGAGATCTGCC
GCC**CGATCGCC**

ATGGCTACAGATGTTCAATTGGCTGGTTATCCACTGATGAGTCCAAGGCTGAGCTGAACTGGAGAAGA
AGTCAGGGCGCAAGCCAAGGAGCCCCAGGGACAGTGGGCCACAGAAAGAACTGGTGATCCAGGGATTGT
GGATTTTCGAGCGGATCCGCCGGCATTGAGGACCCAAAGCCCCAAACCCTGGCACCTACTGCTTTGGA
CGCCTCAGTCACCACTCCTTCTTCTCCCGGCACCCACACCCCAAGCAGCTGACCCACATCCAAGATC
TCACCGGAAGCCTGTCTGTGTCGTGAGGATTTCCAGCCCCCTGCTGAGTCAACTGTCTTTCCGG
CTGTCAAATGGGGATACCCACCATCTGTCCCAATTGGAGACCCACAGTCTAATCGGAACCCCAAGCTT
TCTTCTGAAGCCTGGAAGAAGGAGTTGAAGGAGCTAGCTTCCCGGTGGCCTTCCCTACCAAGGAGGATG
AACTGAAGAAGAAAGAGAAGGAGCAGAAGGAGGAGCCTCTGCGGGAGCAGGGGGCAAAGTACTCAGCAGA
GACTGGGAGGCTCATCCCCGCTTCCACCCGGGCTGTGCGGCCGCCGAGATCTCACCAGGGCCAGCAGAGT
CAGTCTTCCAGCAGACATGAAGGAGTCCAGGCCTTCTCCTTCAGGATCAGGAGCTGTGGTCTGGAGC
TCCTGTGCAGATCCTGGAACAGACTTGCTAAGCGCAATCCAGTCTGGCTGCTCTACGCTCCGCCCAA
GGAAAAAGACCTCGCTCTGGGACTCCTGCAGACAGCAGTGGCTCAGCTCCTTCCCAGCCCCTAGTCTCC
ATCCCTACAGAAAAGCTCCTAAGCCAGCTTCCAGAAGTGCATGAACCTCCTCAAGAGAAGCAAGAGCCAC
CCTGCAGTCAATCCCGAAGAAAACGAAGATACACCTTTTACAAAAAGCGAAAAACAGAGTACATTGG
AGAAGCTCAAGTCTCCAGATGCATTCAAGCCAGAACACAGAGAAGAAGACATCGAAGCCGAGGGCAGAG
AGC

ACGCGTACGCGGCCGCTCGAGCAGAACTCATCTCAGAAGAGGATCTGGCAGCAAATGATATCCTGGATT
ACAAGGATGACGACGATAAGGTTAA



[View online »](#)

Protein Sequence: >RC216613 representing NM_152710
Red=Cloning site Green=Tags(s)

MATDVQLAGYPLMSPKAEKLEKKSGRKPRSPRDSGPQKELVIPGIVDFERIRRALRTPKPQTPGTTCYCFGR
 RLSHHSFFSRHHPHQHVTHIQDLTGKPVVVRDFPAPLPESTVFSGCQMGIPITISVPIGDPQSNRNPQL
 SSEAWKKELKELASRVAFLTKEDELKKKEKEQKEEPLREQGAKYSAETGRLIPASTRAVGRRRSHQGGQS
 QSSSRHEGVQAFLLQDQELLVLELLCQILETDLLSAIQFWLLYAPPKEKDLALGLLQTAVAQLLPQPLVS
 IPTEKLLSQLPEVHEPPQEKQEPPCSQSPKTKISPFTKSEKPEYIGEAQVLQMHSQNTEKTKSKPRAE
 S

TRTRPLEQKLISEEDLAANDILDYKDDDDKV

Chromatograms: https://cdn.origene.com/chromatograms/mk6506_c10.zip

Restriction Sites: SgfI-MluI

Cloning Scheme:



* The last codon before the Stop codon of the ORF

ACCN: NM_152710

ORF Size: 1053 bp

OTI Disclaimer: The molecular sequence of this clone aligns with the gene accession number as a point of reference only. However, individual transcript sequences of the same gene can differ through naturally occurring variations (e.g. polymorphisms), each with its own valid existence. This clone is substantially in agreement with the reference, but a complete review of all prevailing variants is recommended prior to use. [More info](#)

OTI Annotation: This clone was engineered to express the complete ORF with an expression tag. Expression varies depending on the nature of the gene.

Components: The ORF clone is ion-exchange column purified and shipped in a 2D barcoded Matrix tube containing 10ug of transfection-ready, dried plasmid DNA (reconstitute with 100 ul of water).

Reconstitution Method:

1. Centrifuge at 5,000xg for 5min.
2. Carefully open the tube and add 100ul of sterile water to dissolve the DNA.
3. Close the tube and incubate for 10 minutes at room temperature.
4. Briefly vortex the tube and then do a quick spin (less than 5000xg) to concentrate the liquid at the bottom.
5. Store the suspended plasmid at -20°C. The DNA is stable for at least one year from date of shipping when stored at -20°C.

RefSeq: [NM_152710.1](#), [NP_689923.1](#)

RefSeq Size: 1583 bp

RefSeq ORF: 1056 bp

Locus ID: 219793

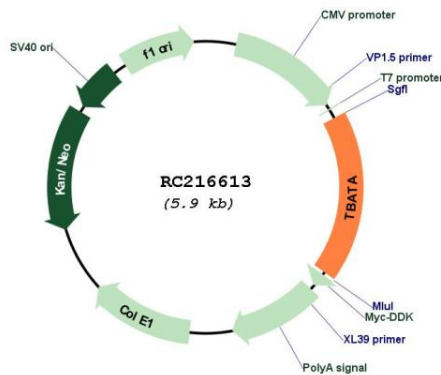
UniProt ID: [Q96M53](#)

Cytogenetics: 10q22.1

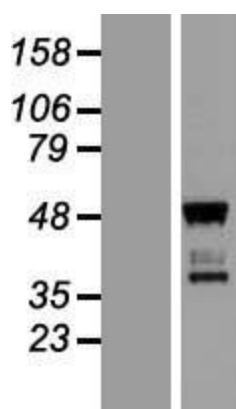
MW: 39.3 kDa

Gene Summary: This gene encodes a protein that regulates thymic epithelial cell proliferation and thymus size. It has been identified as a ligand for the class I human leukocyte antigen (HLA-I) in thymus. Studies of the orthologous mouse protein suggest that it may also play a role in spermatid differentiation, as well as in neuronal morphogenesis and synaptic plasticity. Polymorphisms in this gene are associated with susceptibility for multiple sclerosis (MS). Alternative splicing results in multiple transcript variants. [provided by RefSeq, Dec 2015]

Product images:



Circular map for RC216613



Western blot validation of overexpression lysate (Cat# [LY407352]) using anti-DDK antibody (Cat# [TA50011-100]). Left: Cell lysates from untransfected HEK293T cells; Right: Cell lysates from HEK293T cells transfected with RC216613 using transfection reagent MegaTran 2.0 (Cat# [TT210002]).