

Product datasheet for RC216612

PNMA6A (NM_032882) Human Tagged ORF Clone

Product data:

Product Type:	Expression Plasmids
Product Name:	PNMA6A (NM_032882) Human Tagged ORF Clone
Tag:	Myc-DDK
Symbol:	PNMA6A
Synonyms:	MA6; PNMA6; PNMA6C
Mammalian Cell Selection:	Neomycin
Vector:	pCMV6-Entry (PS100001)
E. coli Selection:	Kanamycin (25 ug/mL)
ORF Nucleotide Sequence:	>RC216612 ORF sequence Red=Cloning site Blue=ORF Green=Tags(s)

TTTTGTAATACGACTCACTATAGGGCGGCCGGAATTCGTCGACTGGATCCGGTACCGAGGAGATCTGCCGCCGCGATCGCC

ATGGCGGTGACCATGCTGCAGGACTGGTGCCGGTGGATGGGGTCAACGCTCGCAGGGCCCTGCTCATCC
TGGGCATCCCGGAGGACTGTGATGATGCCGAATCCAAGAGTCCCTCGAGGCTGCCCTGAGGCTATGGG
ACACTTTACAGTGTAGGCAAAGCGTTTCGAGAGGAGGATAATGCCACCGCGGCCCTGGTCGAGCTCGAC
CGGAAGTCAACTATGCTTTGGTCCCAGGAAATCCCCGGCACTGGGGCCCGTGAACGTGGTCTTTG
TGCCCCGTGCTCAGGCGAGGAGTTTCTCGGTCTCGGTGCGGTGTCCACTTCCCGAGCAAGAGGGCA
GATGGTGGAGAGCGTGGCCGGCGCCCTGGGTGTGGGGCTGCGCAGGGTGTGCTGGCTGCGATCCATCGGT
CAGGCGGTCCAGCCCTGGGTGGAGGCCGTGAGGTGCCAGAGCCTGGGCGTGTTCGGGAGGGACAGC
CAGCCCCAGGGGAGGAGTCTTTGAGGTCTGGTAGACCACACCACCGAAATGCTGCATGTGTGGCAGGG
GGTCTCGAAAGGGAGAGGAGGAGGAGGCTGCTGGAAGGCTTGCCTGGGACCGCCCTGCAGCTCGTGCAC
GCGCTCCTGGCGGAGAACCCCGCAGGACGGCGCAGGACTGTCTGGCGCCCTGGCCAGGTGTTTGAG
ACAACGAGTCCCAGGCGACCATCCGGTGAAGTGTCTGACCGCTCAGCAGCAGTCAGGCGAGCGTCTCTC
AGCTTTCTGTGTCGGCTGGAAGTGTCTGCTGCAGAAGGCCATGGAGAAGGAGGCCCTGGCCAGAGCATCC
GCCAGCCGCTGCGCCTGAGGCAGATGCTCACCAGGGCCACTTACTGAGCCTTGATGAAGCACTGA
GGAAGCTGAGAATGGCCGGGAGGTCTCCAAGTTTCTGGAGATGCTGGGGCTCGTTCGGGAGTCTGAGGC
ATGGGAGGCCAGTCTAGCCAGGAGCGTGAGAGCCAGACACAGGAAGGGCCCGTGGCCGGGCTGGTGGC
CAGGCTGTTGCCAGAGCCAGCACTAAAGTAGAGCGGTCCAGGAGGTCCTGGTGGGAGCCAGAGGGCC
TCCTCCAGGCAAGGAGGCCAGGAGGCTGAGGAGCTCCTCCAGGAGGGCTCAAGCCGTCCTGGAGGAATG
TGATAAC

ACGCGTACGCGGCCGCTCGAGCAGAACTCATCTCAGAAGAGGATCTGGCAGCAAATGATATCCTGGATT
ACAAGGATGACGACGATAAGGTTTAA



Protein Sequence: >RC216612 protein sequence
Red=Cloning site Green=Tags(s)

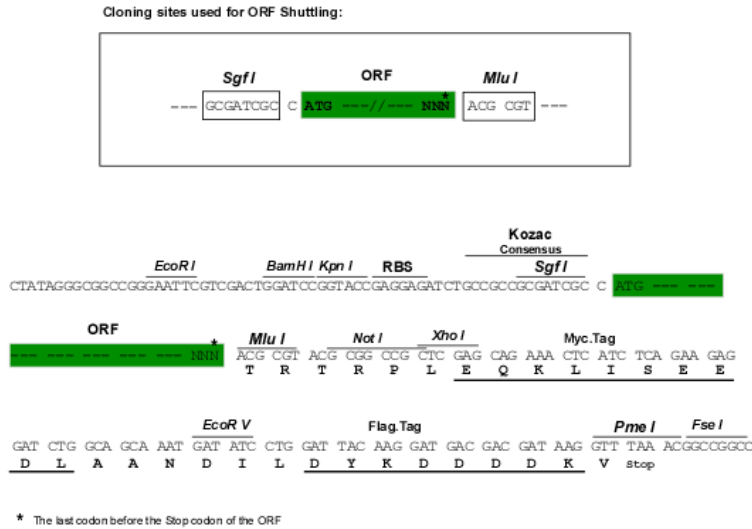
```
MAVTMLQDWCRWGMVNARRGLLILGIPEDCDDAEFQESLEAALRPMGHFTVLGKAFREEDNATAALVELD
REVNYALVPREIPGTGGPWNVVFVPRCSGEEFLGLGRVFHFPEQEGQMVESVAGALGVGLRRVCWLRSIG
QAVQPWVEAVRCQSLGVFSGRDQPAPGEESEFEVLDHTTEMLHVWQGVSERERRRRLLEGLRGTALQLVH
ALLAENPARTAQDCLAALAQVFGDNESQATIRVKCLTAQQQSGERLSAFVLRLEVLQKAMEKEALARAS
ADRVRLRQMLTRAHLTEPLDEALRKLRMAGRSPSFLLEMLGLVRESEAWESLARSVRAQTQEGAGARAGA
QAVARASTKVEAVPGGPGREPEGLLQAGGQAEELLQEGLKPVLEECDN
```

TRTRPLEQKLISEEDLAANDILDYKDDDDKV

Chromatograms: https://cdn.origene.com/chromatograms/mk6413_a06.zip

Restriction Sites: SgfI-MluI

Cloning Scheme:



ACCN: NM_032882

ORF Size: 1197 bp

OTI Disclaimer: The molecular sequence of this clone aligns with the gene accession number as a point of reference only. However, individual transcript sequences of the same gene can differ through naturally occurring variations (e.g. polymorphisms), each with its own valid existence. This clone is substantially in agreement with the reference, but a complete review of all prevailing variants is recommended prior to use. [More info](#)

OTI Annotation: This clone was engineered to express the complete ORF with an expression tag. Expression varies depending on the nature of the gene.

Components: The ORF clone is ion-exchange column purified and shipped in a 2D barcoded Matrix tube containing 10ug of transfection-ready, dried plasmid DNA (reconstitute with 100 ul of water).

- Reconstitution Method:**
1. Centrifuge at 5,000xg for 5min.
 2. Carefully open the tube and add 100ul of sterile water to dissolve the DNA.
 3. Close the tube and incubate for 10 minutes at room temperature.
 4. Briefly vortex the tube and then do a quick spin (less than 5000xg) to concentrate the liquid at the bottom.
 5. Store the suspended plasmid at -20°C. The DNA is stable for at least one year from date of shipping when stored at -20°C.

RefSeq: [NM_032882.6](#)

RefSeq Size: 2278 bp

RefSeq ORF: 1200 bp

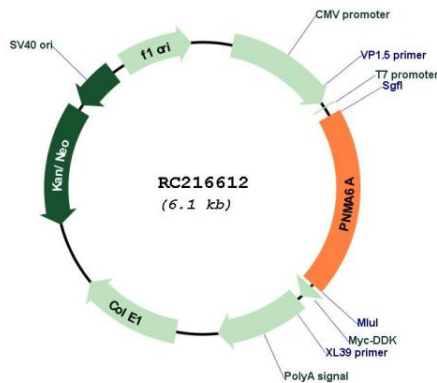
Locus ID: 84968

UniProt ID: [P0CW24](#)

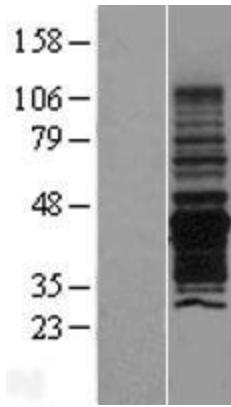
Cytogenetics: Xq28

MW: 43.9 kDa

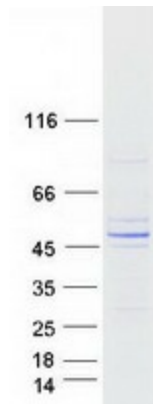
Product images:



Circular map for RC216612



Western blot validation of overexpression lysate (Cat# [LY409808]) using anti-DDK antibody (Cat# [TA50011-100]). Left: Cell lysates from untransfected HEK293T cells; Right: Cell lysates from HEK293T cells transfected with RC216612 using transfection reagent MegaTran 2.0 (Cat# [TT210002]).



Coomassie blue staining of purified PNMA6A protein (Cat# [TP316612]). The protein was produced from HEK293T cells transfected with PNMA6A cDNA clone (Cat# RC216612) using MegaTran 2.0 (Cat# [TT210002]).