

Product datasheet for **RC216610**

TFAP2D (NM_172238) Human Tagged ORF Clone

Product data:

Product Type:	Expression Plasmids
Product Name:	TFAP2D (NM_172238) Human Tagged ORF Clone
Tag:	Myc-DDK
Symbol:	TFAP2D
Synonyms:	TFAP2BL1
Mammalian Cell Selection:	Neomycin
Vector:	pCMV6-Entry (PS100001)
E. coli Selection:	Kanamycin (25 ug/mL)



[View online »](#)

ORF Nucleotide Sequence:

>RC216610 representing NM_172238
 Red=Cloning site Blue=ORF Green=Tags(s)

TTTTGTAATACGACTCACTATAGGGCGGCCGGAATTCGTCGACTGGATCCGGTACCGAGGAGATCTGCC
 GCC**CGGATCGCC**

ATGTCAACTACCTTTCCGGGACTAGTCCACGATGCCGAGATACGTCACGACGGATCAAACAGCTACCGTT
 TGATGCAGCTTGCTGTCTGGAGTCAGTAGCCAATTCCTGTGCCTATTCTCTCCTCTCTCTTAAC
 TTA^TCTCCACCACCGGCACCGAGTTTGCCTCCCTACTTCTCCTAACCACCAGTACACCCCGCTCCAC
 CACCAGTCTTCCATTACGAGTTTCAGCACAGCCACCCGGCCGTACCCCGACGCTACTCTCTGAACT
 CTCTCCACCCTCGAACAGTACTACCAGCAGATCCACCACGGGGAGCCACCGACTTTATTAACCTGCA
 CAATGCGCGGGCGCTCAAGTCGTCTGCCTGGACGAGCAGAGGGCGGGAGCTGGGCTGCCTCGATGCCTAC
 CGCGCCATGACCTGTCCCTCATGAGCCATGGCTCTCAGTATGGAATGCACCCAGATCAAAGACTCTGC
 CAGGGCCAGCCTGGGGCTGGCCGCCGGGAGCAGACGACTTGCAGGGCTCTGTGGAGGCCAGTGTGG
 GCTTGTCTCAATGGCCAAGGTGGAGTGATAAGAAGAGGTGGCACCTGTGTGGTCAACCCACAGACTTA
 TTTTGCTCTGTCCCTGGCCGTTTGTCCCTTCTAGTTCTACTTCAAATACAAGGTGACCATTGCTGAGG
 TAAAGAGGCGCCTCTCCACCTGAGTGCTCAATGCTTCACTCTGGGAGGCATTTTGAGAAGAGCAAA
 ATCAAAGAATGGGGCCGCTGCCTGAGAGAGAAATGGATAGGCTTGGCTTAAACTTACCAGCAGGAAGA
 CGGAAAGCAGCTAATGTCACCCTCTTACTTCTTGGTTGAAGGGGAGGCTTGGCACTTGGCTCGGGATT
 TTGGCTACACTTGTGAACAGAGTTTCCAGCCAAAGCAGTAGGAGAACATCTTCCAGACAACATATGGA
 ACAGAAAGAACAGACAGCAAGAAAAAGATGATCCTGGCGACCAAACTCTGTAAAGAATCCAAGAC
 CTCTTGAGCCAAGATAGATCACCCTGGGATCCTCCAGACCCACTCCAATTCTAGACCTTGACATCCAGA
 GACATTTAACACATTTTCAGTTTGCATCACTCATGGCTTTGGGACTCCGGCAATATGTGCAGCTCTAAGCAC
 TTTCCAAACAGTTCTCAGTGAAATGCTGA^TACTTGGAAAAACACTACTCACAAAGAACGGCGGAGCG
 GCGGATTCTGGCCAAGGACATGCCAACTCGGAGAAAGCTCCCCTGCGGAAAACCTCAGAGGCTGCCGTGA
 AAGAGGGCAAAACAGAAAAGACAGAC

ACGCGTACGCGGCCGCTCGAGCAGAACTCATCTCAGAAGAGGATCTGGCAGCAATGATATCCTGGATT
 ACAAGGATGACGACGATAAGGTTTAA

Protein Sequence:

>RC216610 representing NM_172238
 Red=Cloning site Green=Tags(s)

MSTTFPGLVHDAEIRHDGSNSYRLMQLGCLSVANSTVAYSSSSPLTYSTTGTEFASPYFSTNHQYTPLH
 HQSFHYEFQHSHPAVTPDAYSLNSLHHSQQYYQIHHGEPTDFINLHNARALKSSCLDEQRRELGLCLDAY
 RRHDL^SLSMHSQYGMHPDQRLLPGPSLGLAAAGADDLQGSVEAQCGLVNQGQGVIRRGGTCVVNPTDL
 FCSVPGRLSLLSSTSKYKVTIAEVKRR^LSPPECLNASLLGGILRRAKSKNGGRCLREKLDRLGLNLPAGR
 RKAANVTLTSLVEGEALHLARDFGYTCE^TEFPAKAVGEHLARQHMEQKEQTARKKMILATKQICK^EFQD
 LLSQDRSPLGSSRPTILDLDIQRHLTHFSLITHGF^TPAICAALSTFQTVLSEMLN^LEKHTTHKNGGA
 ADSGQGHANSEKAPLRKTSEAAVKEGKTEKTD

TRTRPLEQKLISEEDLAANDILDYKDDDDKV

Chromatograms:

https://cdn.origene.com/chromatograms/mk8017_b01.zip

Restriction Sites:

Sgfl-Mlul

Cloning Scheme:


ACCN: NM_172238

ORF Size: 1356 bp

OTI Disclaimer: The molecular sequence of this clone aligns with the gene accession number as a point of reference only. However, individual transcript sequences of the same gene can differ through naturally occurring variations (e.g. polymorphisms), each with its own valid existence. This clone is substantially in agreement with the reference, but a complete review of all prevailing variants is recommended prior to use. [More info](#)

OTI Annotation: This clone was engineered to express the complete ORF with an expression tag. Expression varies depending on the nature of the gene.

Components: The ORF clone is ion-exchange column purified and shipped in a 2D barcoded Matrix tube containing 10ug of transfection-ready, dried plasmid DNA (reconstitute with 100 ul of water).

- Reconstitution Method:**
1. Centrifuge at 5,000xg for 5min.
 2. Carefully open the tube and add 100ul of sterile water to dissolve the DNA.
 3. Close the tube and incubate for 10 minutes at room temperature.
 4. Briefly vortex the tube and then do a quick spin (less than 5000xg) to concentrate the liquid at the bottom.
 5. Store the suspended plasmid at -20°C. The DNA is stable for at least one year from date of shipping when stored at -20°C.

RefSeq: [NM_172238.4](#)

RefSeq Size: 2040 bp

RefSeq ORF: 1359 bp

Locus ID: 83741

UniProt ID: [Q7Z6R9](#)

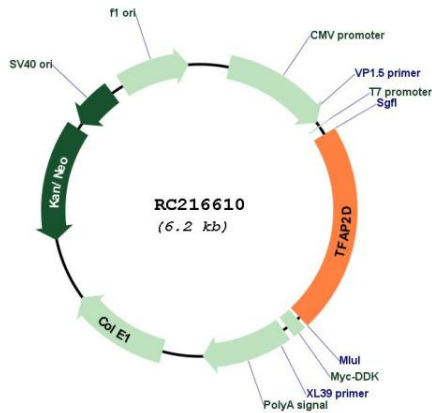
Cytogenetics: 6p12.3

Protein Families: Transcription Factors

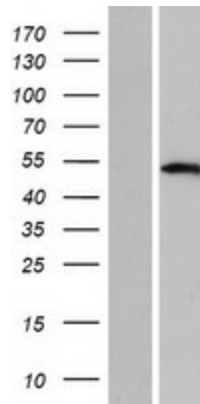
MW: 49.4 kDa

Gene Summary: Sequence-specific DNA-binding protein that interacts with inducible viral and cellular enhancer elements to regulate transcription of selected genes. AP-2 factors bind to the consensus sequence 5'-GCCNNNGGC-3' and activate genes involved in a large spectrum of important biological functions including proper eye, face, body wall, limb and neural tube development. They also suppress a number of genes including MCAM/MUC18, C/EBP alpha and MYC (By similarity).[UniProtKB/Swiss-Prot Function]

Product images:



Circular map for RC216610



Western blot validation of overexpression lysate (Cat# [LY406757]) using anti-DDK antibody (Cat# [TA50011-100]). Left: Cell lysates from untransfected HEK293T cells; Right: Cell lysates from HEK293T cells transfected with RC216610 using transfection reagent MegaTran 2.0 (Cat# [TT210002]).