

Product datasheet for RC216609

DSN1 (NM_024918) Human Tagged ORF Clone

Product data:

Product Type:	Expression Plasmids
Product Name:	DSN1 (NM_024918) Human Tagged ORF Clone
Tag:	Myc-DDK
Symbol:	DSN1
Synonyms:	C20orf172; dj469A13.2; hKNL-3; KNL3; MIS13
Mammalian Cell Selection:	Neomycin
Vector:	pCMV6-Entry (PS100001)
E. coli Selection:	Kanamycin (25 ug/mL)
ORF Nucleotide Sequence:	>RC216609 representing NM_024918 Red=Cloning site Blue=ORF Green=Tags(s)

TTTTGTAATACGACTCACTATAGGGCGGCCGGAATTCGTCGACTGGATCCGGTACCGAGGAGATCTGCC
GCC**CGATCGC**C

ATGACTTCAGTGACTAGATCAGAGATCATAGATGAAAAAGGACCAGTGATGTCTAAGACTCATGATCATC
AATTGGAATCAAGTCTCAGTCTGTGGAAGTGTTGCTAAAACATCTGCCTCCCTGGAGATGAATCAAGG
CGTTTCAGAGGAAAGAATTCACCTTGGCTCTAGCCCTAAAAAGGGGAAATTGTGATCTCAGCCACCAG
GAAAGACTTCAGTCGAAGTCCCTTCATTTGTCTCCTCAAGAACAATCTGCCAGTTATCAAGACAGGAGGC
AATCCTGGCGGCGAGCAAGTATGAAAGAAACGAACCGGCGGAAGTCGCTGCATCCATTCACCAGGGCAT
CACAGAGCTCAGCCGGTCTATCAGTGTCGATTTAGCAGAAAGCAAACGGCTTGGCTGTCTCTGCTTTCC
AGTTTCCAGTTCTCTATTAGAACTTGAACCTTTCTAAGGGACACTAAGGGCTTCAGTCTTGAAGTT
TTAGAGCCAAAGCATCTTCTCTTCTGAAGAATTGAAACATTTTGCAGACGGACTGGAACTGATGGAAC
TCTACAAAAATGTTTTGAAGATTCAAATGGAAAAGCATCAGATTTTTCTTGGAAAGCATCTGTGGCTGAG
ATGAAGGAATACATAACAAAGTTTTCTTTAGAACGTCAGACTTGGGATCAGCTCTTGCTTCACTACCAGC
AGGAGGCTAAAGAGATATTGTCCAGAGGATCAACTGAGGCCAAAATTACTGAGGTCAAAGTGAACCTAT
GACATATCTTGGGTCTTCTCAGAATGAAGTTCTTAATACAAAACCTGACTACCAGAAAATATTACAGAAC
CAGAGCAAAGTCTTTGACTGTATGGAGTTGGTGATGGATGAACTGCAAGGATCAGTGAACAGCTGCAGG
CCTTTATGGATGAAAGTACCCAGTGTCTCCAGAAGGTGTGATACAGCTCGGAAAAGAGAAGCATGCAACA
ATTAGATCCCTCACCAGCTCGAAAACCTGTTGAAGCTTCAGCTACAGAACCACCTGCCATACATGGATCT
GGATCTGGATCTTGTCAG

ACGCGTACGCGGCCGCTCGAGCAGAACTCATCTCAGAAGAGGATCTGGCAGCAAATGATATCCTGGATT
ACAAGGATGACGACGATAAGGTTAA



[View online »](#)

Protein Sequence: >RC216609 representing NM_024918
Red=Cloning site Green=Tags(s)

MTSVTRSEIIDEKGPVMSKTHDHLQLESSLSPVEVFAKTSASLEMNQGVSEERIHGSSPKKGGNCDLSHQ
 ERLQSKSLHLSPQEQSASYQDRRQSWRRASMKETNRRKSLHPIHQGITELSRISVDLAESKRLGCLLLS
 SFQFSIQKLEPFLRDTKGFSLSEFRKASSLSEELKHFADGLETDLQKCFEDSNGKASDFLEASVAE
 MKEYITKFSLERQTWDQLLLHYQQEAKEILSRGSTEAKITEVKVEPMTYLGSSQNEVLNTPDYQKILQN
 QSKVFDCMELVMDELQGSVKQLQAFMDESTQCFQKVSVQLGKRSMQQLDPSARKLLKLQLQNPPAIHGS
 GSGSCQ

TRTRPLEQKLISEEDLAANDILDYKDDDDKV

Chromatograms: https://cdn.origene.com/chromatograms/mk8017_b02.zip

Restriction Sites: SgfI-MluI

Cloning Scheme:



ACCN: NM_024918

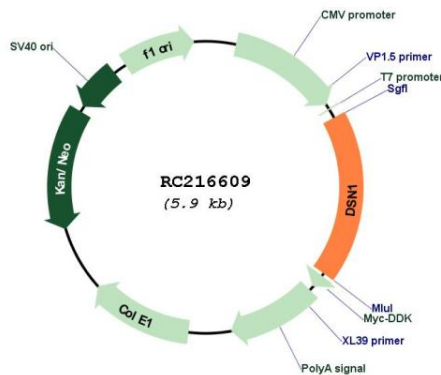
ORF Size: 1068 bp

OTI Disclaimer: Due to the inherent nature of this plasmid, standard methods to replicate additional amounts of DNA in E. coli are highly likely to result in mutations and/or rearrangements. Therefore, OriGene does not guarantee the capability to replicate this plasmid DNA. Additional amounts of DNA can be purchased from OriGene with batch-specific, full-sequence verification at a reduced cost. Please contact our customer care team at custsupport@origene.com or by calling 301.340.3188 option 3 for pricing and delivery.

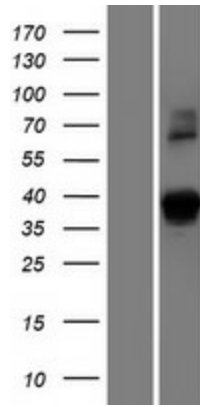
The molecular sequence of this clone aligns with the gene accession number as a point of reference only. However, individual transcript sequences of the same gene can differ through naturally occurring variations (e.g. polymorphisms), each with its own valid existence. This clone is substantially in agreement with the reference, but a complete review of all prevailing variants is recommended prior to use. [More info](#)

- OTI Annotation:** This clone was engineered to express the complete ORF with an expression tag. Expression varies depending on the nature of the gene.
- Components:** The ORF clone is ion-exchange column purified and shipped in a 2D barcoded Matrix tube containing 10ug of transfection-ready, dried plasmid DNA (reconstitute with 100 ul of water).
- Reconstitution Method:**
1. Centrifuge at 5,000xg for 5min.
 2. Carefully open the tube and add 100ul of sterile water to dissolve the DNA.
 3. Close the tube and incubate for 10 minutes at room temperature.
 4. Briefly vortex the tube and then do a quick spin (less than 5000xg) to concentrate the liquid at the bottom.
 5. Store the suspended plasmid at -20°C. The DNA is stable for at least one year from date of shipping when stored at -20°C.
- RefSeq:** [NM_024918.4](#)
- RefSeq Size:** 2095 bp
- RefSeq ORF:** 1071 bp
- Locus ID:** 79980
- UniProt ID:** [Q9H410](#)
- Cytogenetics:** 20q11.23
- MW:** 39.9 kDa
- Gene Summary:** This gene encodes a kinetochore protein that functions as part of the minichromosome instability-12 centromere complex. The encoded protein is required for proper kinetochore assembly and progression through the cell cycle. Alternative splicing results in multiple transcript variants. [provided by RefSeq, Feb 2009]

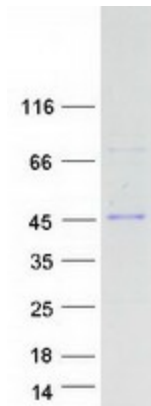
Product images:



Circular map for RC216609



Western blot validation of overexpression lysate (Cat# [LY411014]) using anti-DDK antibody (Cat# [TA50011-100]). Left: Cell lysates from untransfected HEK293T cells; Right: Cell lysates from HEK293T cells transfected with RC216609 using transfection reagent MegaTran 2.0 (Cat# [TT210002]).



Coomassie blue staining of purified DSN1 protein (Cat# [TP316609]). The protein was produced from HEK293T cells transfected with DSN1 cDNA clone (Cat# RC216609) using MegaTran 2.0 (Cat# [TT210002]).