

Product datasheet for **RC216600**

CDK5RAP1 (NM_016408) Human Tagged ORF Clone

Product data:

Product Type:	Expression Plasmids
Product Name:	CDK5RAP1 (NM_016408) Human Tagged ORF Clone
Tag:	Myc-DDK
Symbol:	CDK5RAP1
Synonyms:	C20orf34; C42; CGI-05; HSPC167
Mammalian Cell Selection:	Neomycin
Vector:	pCMV6-Entry (PS100001)
E. coli Selection:	Kanamycin (25 ug/mL)



[View online »](#)

ORF Nucleotide Sequence:

>RC216600 ORF sequence
 Red=Cloning site Blue=ORF Green=Tags(s)

TTTTGTAATACGACTCACTATAGGGCGGCCGGGAATTCGTCGACTGGATCCGGTACCGAGGAGATCTGCC
 GCC**CGCATCGCC**

ATGCACCCTTTACAGTGTCTCCAAGTGCAGAGGTCTCTGGGGTGGGACCATTGGCCTCTGTGTCTT
 GGCTGTCGCTGAGGATGTGCAGGGCACACAGCAGTCTCTAGTACCATGTGCCAGTCCAGAGAGGCA
 GGAGGATGGAGCTCGGAAGGATTTACAGTCCAGGCTGGCTGCTGGACCGACTTTTCAACATTTTTAAAA
 AGTGCCTCAGCTCCTCAGGAGAAGCTGTCTTCAAGTGAAGACCCACCTCCCTATCTCATGATGGATG
 AACTTCTTGAAGGCAGAGAAAAGTCTACCTCGAGACCTATGGCTGCCAGATGAATGTGAATGACACAGA
 GATAGCCTGGTCCATCTTACAGAAGAGTGGCTACCTGCGGACCAGTAACCTCCAAGAGGCAGATGTGATT
 CTCCTTGTACGTGCTCTATCAGGGAGAAGGCTGAGCAGACCCTGGAACCGTTTACATCAGCTTAAAG
 CCTTGAAGACAAGGCGGCCCGCTCCCGGGTTCCTCTGAGGATTGGAATTTAGGCTGCATGGCTGAGAG
 GTTGAAGGAGGAGATTCTCAACAGAGAGAAAATGGTAGATATTTGGCTGGTCTGATGCCTACCGGGAC
 CTTCCCGGCTGCTGGCTGTTGCTGAGTCGGGCCAGCAAGCTGCCAACGTGCTGCTCTCTGGACGAGA
 CCTATGCTGATGTCATGCCAGTCCAGACAAGCGCCAGTGCCACGTCTGCCTTTGTGTCAATCATGCGAGG
 CTGTGACAACATGTGTAGCTACTGCATTGTTCTTTACCCGGGGCAGGGAGAGGAGTCCGCCTATTGCC
 TCCATTCTAGAGGAAGTGAAGAAGCTTTCTGAGCAGGGGCTGAAAGAAGTACACTTCTTGGTCAGAATG
 TTAATAGTTTTCCGGACAATTCGGAGGTCCAGTTCAACAGTGCAGTGCCTACCAATCTCAGTCGTGGCTT
 TACCACCAACTATAAAACCAAGCAAGGAGGACTTCGTTTTGCTCATCTTCTGGATCAGGTCTCCAGAGTA
 GATCCTGAAATGAGGATCCGTTTTACCTCTCCCAACCAAGGATTTTCTGATGAGTCTCCAGAGTA
 TTCATGAGAGAGATAACATCTGTAACAGATCCACCTGCCAGCCAGAGTGAAGCAGCCGTGTGTTGGA
 GGCCATGCGGAGGGGATATTCAAGAGAAGCTTATGTGGAGTTAGTTACCATATTAGAGAATCTATTCCA
 GGTGTGAGCCTCAGCAGCGATTTTATTGCTGGCTTTTGTGGTGAAGCAGGGAAGATCACGTCCAGACAG
 TCTCTTTGCTCCGGGAAGTTCAGTACAACATGGGCTTCTCTTTGCCTACAGCATGAGACAGAAGACAG
 GGCATATCATAGGCTGAAGGATGATGTCCCGGAAGAGGTAATAAGGCGTTTGGAGGAACATCACT
 ATCTTCCGAGAAGAAGCAACAAAAGCCAATCAGACCTCTGTGGGCTGTACCCAGTTGGTGTAGTGAAG
 GGCTCAGTAAACGCTCTGCCACTGACCTGTGTGGCAGGAATGATGAAACCTTAAGTGATCTTCCCTGA
 TGCAGAGATGGAGGATGTCAATAACCTGGGCTCAGGGTCAGAGCCAGCCTGGGACTATGTGCTGGT
 AAGATCACCTCAGCCAGTCTCAGACACTTAGGGGACATGTTCTCTGCAGGACCCTCTGAGGGACTCTT
 CTGCATATTGC

ACGCGTACGCGGCCGCTCGAGCAGAAACTCATCTCAGAAGAGGATCTGGCAGCAAATGATATCCTGGATT
 ACAAGGATGACGACGATAAGGTTTAA

Protein Sequence:

>RC216600 protein sequence
 Red=Cloning site Green=Tags(s)

MHPLQCVLQVQRSLGWGPLASVSWLSLRMCRAHSSLSTMCPSPERQEDGARKDFSSRLAAGPTFQHFLK
 SASAPQEKLSSEVEDPPPYLMMDELLGRQRKVVLETYGCQMNVDTEIAWSILQKSGYLRTSNLQEAADI
 LLVTCISIREKAEQTIWNRLHQLKALKTRRPRSRVPLRIGILGCMAERLKEEILNREKMDILAGPDAYRD
 LPRLLAVAESGQQAANVLLSLDETYADVMPVQTSASATSAFVSIMRGCDNMCSYIVPFRGRERSRPIA
 SILEEVKKLSEQGLKEVTLGQNVNSFRDNSEVQFNSAVPTNLSRGFTTNYKTKQGLRFAHLLDQVSRV
 DPEMRIRFTSPHPKDFPDEVLLQIHERDNICKQIHLPAQSGSSRVLEAMRRGYSREAYVELVHHIRESIP
 GVSLSSEDFIAGFCGETEEDHVQTVSLLREVQYNMGFLFAYSMRQKTRAYHRLKDDVPEEVKLRRLLEELIT
 IFREEATKANQTSVGCTQLVLEGLSKRSATDLGRNDGNLKVIFPDAEMEDVNNPGLRVRAQPQDYYVLV
 KITSASSQTLRGHVLCRTTLRDSSAYC

TRTRPLEQKLISEEDLAANDILDYKDDDDKV

Chromatograms:

https://cdn.origene.com/chromatograms/mk6526_a07.zip

Restriction Sites: SgfI-MluI

Cloning Scheme:



ACCN: NM_016408

ORF Size: 1761 bp

OTI Disclaimer: The molecular sequence of this clone aligns with the gene accession number as a point of reference only. However, individual transcript sequences of the same gene can differ through naturally occurring variations (e.g. polymorphisms), each with its own valid existence. This clone is substantially in agreement with the reference, but a complete review of all prevailing variants is recommended prior to use. [More info](#)

OTI Annotation: This clone was engineered to express the complete ORF with an expression tag. Expression varies depending on the nature of the gene.

Components: The ORF clone is ion-exchange column purified and shipped in a 2D barcoded Matrix tube containing 10ug of transfection-ready, dried plasmid DNA (reconstitute with 100 ul of water).

Reconstitution Method:

1. Centrifuge at 5,000xg for 5min.
2. Carefully open the tube and add 100ul of sterile water to dissolve the DNA.
3. Close the tube and incubate for 10 minutes at room temperature.
4. Briefly vortex the tube and then do a quick spin (less than 5000xg) to concentrate the liquid at the bottom.
5. Store the suspended plasmid at -20°C. The DNA is stable for at least one year from date of shipping when stored at -20°C.

RefSeq: [NM_016408.4](#)

RefSeq Size: 2143 bp

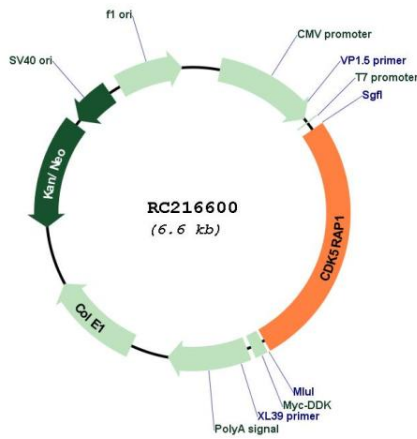
RefSeq ORF: 1764 bp

Locus ID: 51654

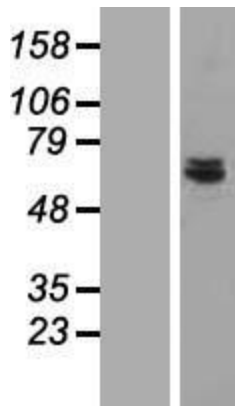
UniProt ID: [Q96SZ6](#)
Cytogenetics: 20q11.21
Domains: TRAM, UPF0004, Elp3, Radical_SAM
MW: 66.1 kDa

Gene Summary: This gene encodes a regulator of cyclin-dependent kinase 5 activity. This protein has also been reported to modify RNA by adding a methylthio-group and may thus have a dual function as an RNA methylthiotransferase and as an inhibitor of cyclin-dependent kinase 5 activity. Alternative splicing results in multiple transcript variants that encode different isoforms. [provided by RefSeq, May 2013]

Product images:



Circular map for RC216600



Western blot validation of overexpression lysate (Cat# [LY414004]) using anti-DDK antibody (Cat# [TA50011-100]). Left: Cell lysates from untransfected HEK293T cells; Right: Cell lysates from HEK293T cells transfected with RC216600 using transfection reagent MegaTran 2.0 (Cat# [TT210002]).