

Product datasheet for **RC216596**

XRRA1 (NM_182969) Human Tagged ORF Clone

Product data:

Product Type:	Expression Plasmids
Product Name:	XRRA1 (NM_182969) Human Tagged ORF Clone
Tag:	Myc-DDK
Symbol:	XRRA1
Mammalian Cell Selection:	Neomycin
Vector:	pCMV6-Entry (PS100001)
E. coli Selection:	Kanamycin (25 ug/mL)



[View online »](#)

ORF Nucleotide Sequence:

>RC216596 representing NM_182969
 Red=Cloning site Blue=ORF Green=Tags(s)

TTTTGTAATACGACTCACTATAGGGCGGCCGGGAATTCGTCGACTGGATCCGGTACCGAGGAGATCTGCC
 GCC**CGATCGCC**

ATGGCCTTCTCAGGAATCTACAAGCTGGATGATGGGAAGCCTTACCTGAACAACCTGCTTCCAGCCAGAA
 ATCTGCTTCGCGTGCCGGAGGAAGGCCAAGGACTGTTAGTGGTTTCAAAAAGGTAACCTCAAGAAGAA
 GCCCAAGGGTTTGGTTGGAGCACAACTGAACGTCGGGAAAGCCTGAAGGCGACTTCTTTTGGATTCAAG
 GGAAGAAAGAGTCTCGGCGGAAAAATCAGGTGGACCTTCTGGACATATCCTGGACCAGGCTTTTCTGC
 TGAAGCACCAGTGTGAGGAAGCCATCAGATCTGTGCACCTAATGCCAAGGAAAAATGACTTCAAGCA
 TTTTCATTCTGTGATTTATCAATGCCTCAGAAAACCTGCTGCCTCTAGAGGCATTTACACGTTTCCA
 GCCCTAAAGGAAGTGGATCTCGCATTTAATGGCATCAAACTATCTACGTGAAATATGGAGACTTTAAGT
 TATTAGAATTCTGGACCTTTCCTCAACAGCCTGACTGTGGAGCCATCTGTGATTTGGGATTCTGCC
 ACACCTCCGTGTCTGCTCCTCACAGGCAATGGCCTTACCTCCCTGCCGCCAATTTGGCGTTCGAGAA
 CAGGAGGCATCTGTAACATCGCTGACAAGCAAGAGGTACATCCTGAGGTTCCAGCGCTGGAGACTGA
 TGCTGGATGACAACAGACTCTCCAACCCAGTTGCTTTGCCAGCCTGGCTGGGCTCAGGAGACTGAAGAA
 GTTAAGCTTGGATGAAAACAGGATTATCAGGATCCCATACCTACAGCAAGTTTACGCTCTATGACGAGTCA
 GTAGACTGGAAATGGAGGCAGGGGAAGTCCCATAAAGAGCCCAATTCATGCTGCAGTCCAAGCCAAGGA
 TGCTTGAGGACTCAGATGAGCAACTGGATTATACTGTACTGCCATGAAAAAGGATGTTGACCGGACAGA
 GGTTGTGTTTTTTCATTTACCCTGGATTTTCAACCTCAGAGACAACCAAGATATGTTCACTTCTCCATA
 TTCGAGATCCTTCTGTGAAGTCACTGAAGGCCAGGAACCAGAGCTGGCCCCACCCTTCCAGAGCTGA
 GATACCTTAGCCTGGCTACAACAAGATCGAAAAGAGGATGCTGCTACCAGTAGCTCTTCCATC
 TCTCTGCGAGTTGCTTTTATAACAACCTCTGGTGGCCATACACGAGGGTCCCTCCACTGCTGAAG
 AGCTTCTCCAGGAGCGACTGGGAATCCACTTAATTCGAAGGAAGATAGTAAAGCCTAAGCATCATGTTT
 TGATGTCTCGGAAGGAATCATGGAAGGTGAAAAGCGAAAATCCAAAGGTGCCAAGCAGCCTCTGGTGTCT
 CCATCACCCGCGCATGACGACAACCAAGTCTCCCTCAAAGGATATGCTAGAGCCAGAGGCAGAGCTGGCT
 GAAGATCTGCCACTACCAAAAGCACTTCTGTGGAGTCAAGATGCCACTGAGAACCTGGAAGGCCATT
 CCCCCTTGGCCGACCTTCGTGCCACTGCCTCCATCTGCTCCAACCTCACTGTGCATAGTGAAGAGAC
 CCTGTCCACCTGAGTGACACAACCTGTCCGCTCAGCCAGAGCGCCATCAGATGAGGACTCCAAGAGC
 ACAGAGTCCATCTTCTGACCCAGGTGAGTGAAGTGCCTTCTCCGTATCCATAAGGATGATTTAGAGT
 TAAAGGAGAAAGACCAAAAGAAACCAACCGCACCCAGAGAGGTGAAAGGGACTCGGAGGAAACTCCC
 AACTGCCTTCTTCCAGCAAGTACCACGGCTATGAAGAAGTGTGACAGCCAAGCCTGATCCAGCCTTC
 ATTGAGCCAAAGGGAATCCAGAAGAATGCAACAAGCCTGCAACAATGCTGAAGCACCCACTCTGTGCC
 ACTCTCCAAGCCAAAGCTGGACTCTTCAAAAACCTATGTTCAAAAAGAAAACGGGCCAGAGAAT
 CCCGATTCACCCCAAGAAAGACTAGAGCCAACTTCTGGATGACATCTTATTTCGTTGCGGGATCCC
 CGGAACATTACAGAGGCTCCACTAGGTGCTGTCTGCACCAGTGGACAGAACGGCGGCTGGTGAACCACA
 AGCAGTACCTGGAGGCCAAGAGGCTGTTGAAGGAGTCCAGGCAGTTACCGGCAGCTGGTGAAGTGGCTC
 TCTGCGCACAGTGTTCGGGACTACCCGCTCCCATGGCTGCCAGCGCTGAGTGAGAGCCAGCCCAAG
 TTGGCCACTTCTCGAGTTCATGGATGAGTTCTGCCAGGAGCCACAGCCAGTACTCACAAGGC

ACGCGTACGCGGCCGCTCGAGCAGAAACTCATCTCAGAAGAGGATCTGGCAGCAAATGATATCTGGATT
 ACAAGGATGACGACGATAAGGTTTAA

Protein Sequence: >RC216596 representing NM_182969
Red=Cloning site Green=Tags(s)

MAFSGIYKLDGKPYLNCFARNLLRVPEEGQGHVWVQKGNLKKKPKGLVGAQAERRESLKATSFEEK
GKKESRRENQVDLPGHILDQAFLLKHCVRKPSDLCTINAKENDFKHFHSVIYINASENLLPLEAFHTFP
ALKELDLAFNGIKTIYVKYGDFKLEFLDLNFNSLTVEAICDLGILPHLRVLLL TGNGLTSLPPNLAVAE
QEASVTSLSKRYILRFPALLETMLDDNRLSNPSCFASLAGLRRLKLSLDENRIIRIPYLQQVQLYDES
VDWNGGRGSPHKEPQFMLQSKPRMLEDSDQLDYTVLPMKKDVRTEVVFSSYPGFSTSETTKICSLPPI
FEILPVKSLKARNQTLAPPFPELRYLSLAYNKIAKEDAVLPVALFPSLCEVFVHNNPLVAHTRGVPLLLK
SFLQERLGIHLIRRKIVKPKHHVLSMRKESWKVKSEIPKVPKQPLVHHPRMTTTSKSPKDMLEPEAELA
EDLPTTKSTVSEEMPTENLEGHSPSCRTFVPLPPICSNSTVHSEETLSHLSDTTVRLSPERPSDEDSKS
TESIFLTQVSELPSVVIHKDDLELKEKQKPPPTAPREVKGTRRKLPTAFLPSKYHGYEELLTAKPDPAF
IEPKGIQKNAQALQQMLKHPLLCHSSKPKLDTLQKPYVHKEKRAQRIPPPPCKTRAQLDDIFIRLRDP
RNITEAPLGAVLHQWTERRLVNHKQYLEAKRLLKEFQARYRQLVSGSLRTVFGTTPLPMACPALSESQPK
FGHFLEFMDFECQEPTASDSQG

TRTRPLEQKLISEEDLAANDILDYKDDDDKV

Chromatograms: https://cdn.origene.com/chromatograms/mk8017_b06.zip

Restriction Sites: Sgfl-Mlul

Cloning Scheme:


ACCN: NM_182969

ORF Size: 2376 bp

OTI Disclaimer: The molecular sequence of this clone aligns with the gene accession number as a point of reference only. However, individual transcript sequences of the same gene can differ through naturally occurring variations (e.g. polymorphisms), each with its own valid existence. This clone is substantially in agreement with the reference, but a complete review of all prevailing variants is recommended prior to use. [More info](#)

OTI Annotation: This clone was engineered to express the complete ORF with an expression tag. Expression varies depending on the nature of the gene.

Components: The ORF clone is ion-exchange column purified and shipped in a 2D barcoded Matrix tube containing 10ug of transfection-ready, dried plasmid DNA (reconstitute with 100 ul of water).

Reconstitution Method:

1. Centrifuge at 5,000xg for 5min.
2. Carefully open the tube and add 100ul of sterile water to dissolve the DNA.
3. Close the tube and incubate for 10 minutes at room temperature.
4. Briefly vortex the tube and then do a quick spin (less than 5000xg) to concentrate the liquid at the bottom.
5. Store the suspended plasmid at -20°C. The DNA is stable for at least one year from date of shipping when stored at -20°C.

RefSeq: [NM_182969.4](#)

RefSeq Size: 5028 bp

RefSeq ORF: 2379 bp

Locus ID: 143570

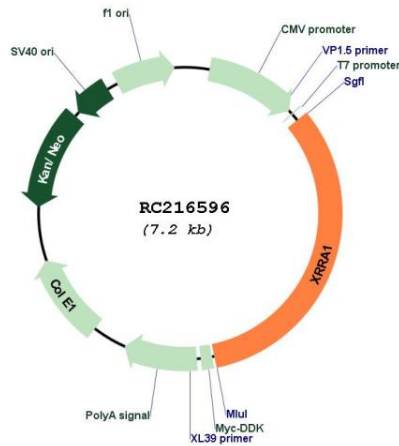
UniProt ID: [Q6P2D8](#)

Cytogenetics: 11q13.4

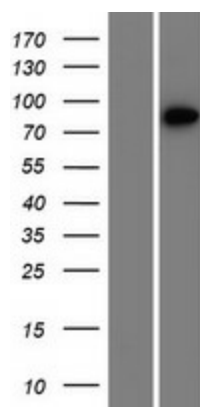
MW: 89.7 kDa

Gene Summary: May be involved in the response of cells to X-ray radiation.[UniProtKB/Swiss-Prot Function]

Product images:



Circular map for RC216596



Western blot validation of overexpression lysate (Cat# [LY405284]) using anti-DDK antibody (Cat# [TA50011-100]). Left: Cell lysates from untransfected HEK293T cells; Right: Cell lysates from HEK293T cells transfected with RC216596 using transfection reagent MegaTran 2.0 (Cat# [TT210002]).