

## Product datasheet for RC216582

### CIB3 (NM\_054113) Human Tagged ORF Clone

#### Product data:

Product Type: Expression Plasmids  
 Product Name: CIB3 (NM\_054113) Human Tagged ORF Clone  
 Tag: Myc-DDK  
 Symbol: CIB3  
 Synonyms: KIP3  
 Mammalian Cell Selection: Neomycin  
 Vector: pCMV6-Entry (PS100001)  
 E. coli Selection: Kanamycin (25 ug/mL)  
 ORF Nucleotide Sequence: >RC216582 ORF sequence  
 Red=Cloning site Blue=ORF Green=Tags(s)

TTTTGTAATACGACTCACTATAGGGCGCCGGGAATTCGTCGACTGGATCCGGTACCGAGGAGATCTGCC  
 GCC**CGATCGCC**

ATGGGCAACAAGCAGACAGTCTTCACACACGAGCAGCTGGAAGCGTATCAGGACTGCACATTTTTCAAA  
 GGAAGGAGATCATGAGGCTCTTCTATCGCTACCAGGACCTGGCCCCACAGCTCGTGCCCTCGACTATAC  
 CACCTGCCCGATGTGAAGGTGCCCTACGAGCTCATTGGCAGCATGCCCGAGCTGAAGGACAACCCCTTC  
 CGCCAGAGGATTGCCAGGATTCTCTGAGGATGGGGATGGCCACATGACCTGGACAACTTTTGGACA  
 TGTTTTCCGTGATGAGTAAAATGGCTCCCGCGACCTCAAGGCTTACTATGCTTTTAAAATTTATGATTT  
 TAACAACGACGACTACATTTGTGCGTGGGACCTGGAGCAGACGGTGACCAAAGTACGCGGGGGGAGCTG  
 AGTGCCGAGGAGGTGAGCCTGGTATGTGAGAAGGTGCTGGATGAGGCTGATGGAGACCATGATGGGCGGC  
 TGTCCCTGGAAGATTTCCAGAACATGATCCTCCGGGCACCCAGACTTCTCAGCACCTTCCACATCCGAAT  
 C

**ACGCGT**ACGCGGCCGCTCGAGCAGAACTCATCTCAGAAGAGGATCTGGCAGCAAATGATATCCTGGATT  
 ACAAGGATGACGACGATAAGGTTTAA

Protein Sequence: >RC216582 protein sequence  
 Red=Cloning site Green=Tags(s)

MGNKQTVFTHEQLEAYQDCTFFTRKEIMRLFYRYQDLAPQLVPLDYTTCPDVKVPYELIGSMPELKDNP  
 RQRIAQVFSEDGDGHMTLDNFLDMFSVMSEMAPRDLKAYAFKIYDFNDDYICAWDLEQTVTKLTRGEL  
 SAEVSLVCEKVLDEADGDHGRSLSEDFQNMILRAPDFLSTFHIRI

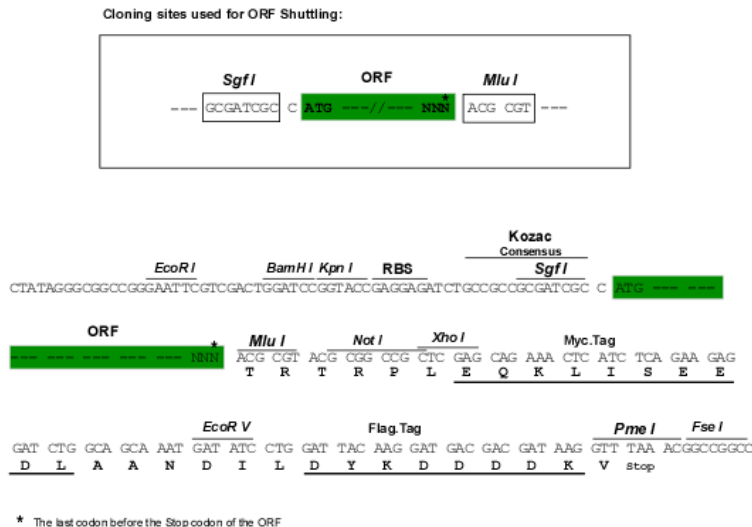
**TRTRPLEQKLI**SEEDLAANDILDYKDDDDKV



**Chromatograms:** [https://cdn.origene.com/chromatograms/mk6610\\_d05.zip](https://cdn.origene.com/chromatograms/mk6610_d05.zip)

**Restriction Sites:** SgfI-MluI

**Cloning Scheme:**



**ACCN:** NM\_054113

**ORF Size:** 561 bp

**OTI Disclaimer:** The molecular sequence of this clone aligns with the gene accession number as a point of reference only. However, individual transcript sequences of the same gene can differ through naturally occurring variations (e.g. polymorphisms), each with its own valid existence. This clone is substantially in agreement with the reference, but a complete review of all prevailing variants is recommended prior to use. [More info](#)

**OTI Annotation:** This clone was engineered to express the complete ORF with an expression tag. Expression varies depending on the nature of the gene.

**Components:** The ORF clone is ion-exchange column purified and shipped in a 2D barcoded Matrix tube containing 10ug of transfection-ready, dried plasmid DNA (reconstitute with 100 ul of water).

**Reconstitution Method:**

1. Centrifuge at 5,000xg for 5min.
2. Carefully open the tube and add 100ul of sterile water to dissolve the DNA.
3. Close the tube and incubate for 10 minutes at room temperature.
4. Briefly vortex the tube and then do a quick spin (less than 5000xg) to concentrate the liquid at the bottom.
5. Store the suspended plasmid at -20°C. The DNA is stable for at least one year from date of shipping when stored at -20°C.

**RefSeq:** [NM\\_054113.4](#)

**RefSeq Size:** 725 bp

**RefSeq ORF:** 564 bp

**Locus ID:** 117286

UniProt ID: [Q96Q77](#)

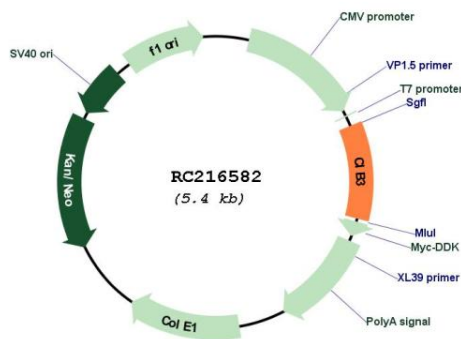
Cytogenetics: 19p13.11

Protein Families: Druggable Genome

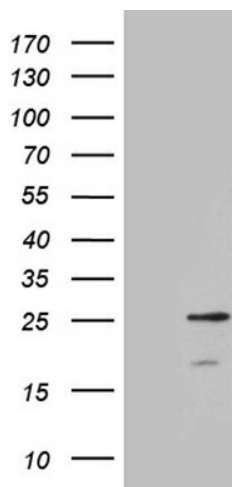
MW: 21.9 kDa

**Gene Summary:** This gene product shares a high degree of sequence similarity with DNA-dependent protein kinase catalytic subunit-interacting protein 2 in human and mouse, and like them may bind the catalytic subunit of DNA-dependent protein kinases. The exact function of this gene is not known. Alternative splicing results in multiple transcript variants. [provided by RefSeq, Jul 2014]

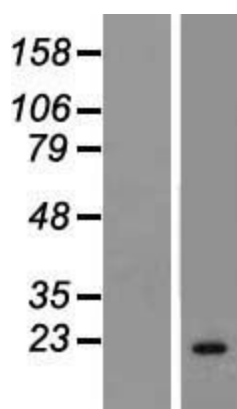
**Product images:**



Circular map for RC216582



HEK293T cells were transfected with the pCMV6-ENTRY control (Cat# [PS100001], Left lane) or pCMV6-ENTRY CIB3 (Cat# RC216582, Right lane) cDNA for 48 hrs and lysed. Equivalent amounts of cell lysates (5 ug per lane) were separated by SDS-PAGE and immunoblotted with anti-CIB3 (Cat# [TA811077]). Positive lysates [LY409288] (100ug) and [LC409288] (20ug) can be purchased separately from OriGene.



Western blot validation of overexpression lysate (Cat# [LY409288]) using anti-DDK antibody (Cat# [TA50011-100]). Left: Cell lysates from untransfected HEK293T cells; Right: Cell lysates from HEK293T cells transfected with RC216582 using transfection reagent MegaTran 2.0 (Cat# [TT210002]).