

Product datasheet for RC216580

CMTM3 (NM_144601) Human Tagged ORF Clone

Product data:

Product Type:	Expression Plasmids
Product Name:	CMTM3 (NM_144601) Human Tagged ORF Clone
Tag:	Myc-DDK
Symbol:	CMTM3
Synonyms:	BNAS2; CKLFSF3
Mammalian Cell Selection:	Neomycin
Vector:	pCMV6-Entry (PS100001)
E. coli Selection:	Kanamycin (25 ug/mL)
ORF Nucleotide Sequence:	>RC216580 representing NM_144601 Red=Cloning site Blue=ORF Green=Tags(s)

TTTTGTAATACGACTCACTATAGGGCGGCCGGAATTCGTCGACTGGATCCGGTACCGAGGAGATCTGCC
GCC**CGATCGCC**

ATGTGGCCCCAGACCCGACCCGACCCGACCCGACCCGAGCCTGCCGGCGGCTCCCGTCCCGGCCCGCGG
TCCCGGGCTCCGCGCCCTGCTGCCGGCGGGCTTTCCTCTGCTCTCAAAGGCCGCCTCTGCTGGC
CGAGTCGGGTCTCTATTCACTTTTATCTGCTATGTGGCGTCTCAGCATCTGCCTTCTCACAGCG
CCTCTGCTGGAGTTCCTGCTGGCCTTGTACTTCTCTTTGCTGATGCCATGCAGCTGAATGACAAGTGGC
AGGGCTTGTGCTGGCCATGATGGACTTCTGCGCTGTGTACCAGCGGCCCTCATCTACTTTGCTATCTC
CATCACGGCCATCGCAAGTACTCGGATGGGGCTTCAAAGCCGCTGGGGTGTGGCTTTGCTTACC
ATCGTGTGGCACTGATTTCTACCTGATCTTTAACGACGTGGCCAAATTCCTCAAACAAGGGGACTCTG
CAGATGAGACCACAGCCACAAGACAGAAGAAGAATTCGACTCGGACTCTGAC

ACGCGTACGCGGCCGCTCGAGCAGAACTCATCTCAGAAGAGGATCTGGCAGCAATGATATCCTGGATT
ACAAGGATGACGACGATAAGGTTTAA

Protein Sequence:	>RC216580 representing NM_144601 Red=Cloning site Green=Tags(s)
-------------------	--

MWPPDPDPDPPEPAGGSRPGPAVPLRALLPARAFLCSLKGRLLLAESGLSFITFICYVASSASAFLLTA
PLLEFLLALYFLFADAMQLNDKWQGLCWPMDFLRCVTAALYFAISITAIKYSYDYGASKAAGVGFAT
IVFATDFYLIIFNDVAKFLKQGSADETTAHKTEEENSDDSD

TRTRPLEQKLISEEDLAANDILDYKDDDDKV

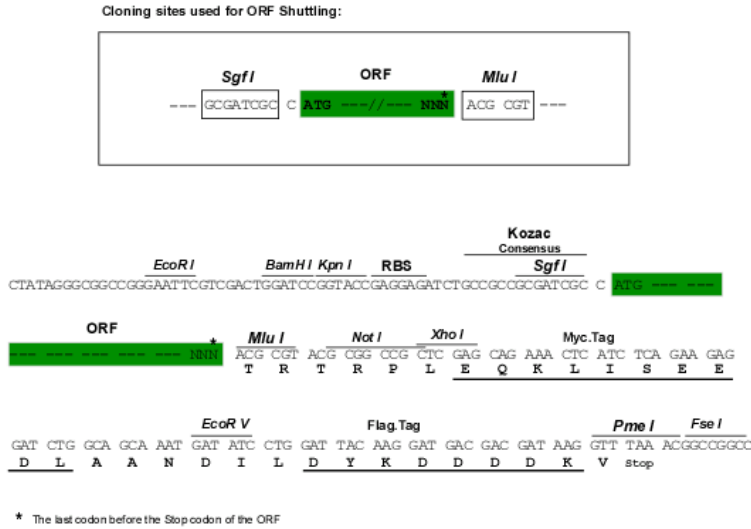
Chromatograms:	https://cdn.origene.com/chromatograms/mk6349_g03.zip
----------------	---



[View online »](#)

Restriction Sites: SgfI-MluI

Cloning Scheme:



ACCN: NM_144601

ORF Size: 546 bp

OTI Disclaimer: The molecular sequence of this clone aligns with the gene accession number as a point of reference only. However, individual transcript sequences of the same gene can differ through naturally occurring variations (e.g. polymorphisms), each with its own valid existence. This clone is substantially in agreement with the reference, but a complete review of all prevailing variants is recommended prior to use. [More info](#)

OTI Annotation: This clone was engineered to express the complete ORF with an expression tag. Expression varies depending on the nature of the gene.

Components: The ORF clone is ion-exchange column purified and shipped in a 2D barcoded Matrix tube containing 10ug of transfection-ready, dried plasmid DNA (reconstitute with 100 ul of water).

Reconstitution Method:

1. Centrifuge at 5,000xg for 5min.
2. Carefully open the tube and add 100ul of sterile water to dissolve the DNA.
3. Close the tube and incubate for 10 minutes at room temperature.
4. Briefly vortex the tube and then do a quick spin (less than 5000xg) to concentrate the liquid at the bottom.
5. Store the suspended plasmid at -20°C. The DNA is stable for at least one year from date of shipping when stored at -20°C.

RefSeq: [NM_144601.4](#)

RefSeq Size: 2126 bp

RefSeq ORF: 549 bp

Locus ID: 123920

UniProt ID: [Q96MX0](#)

Cytogenetics: 16q22.1

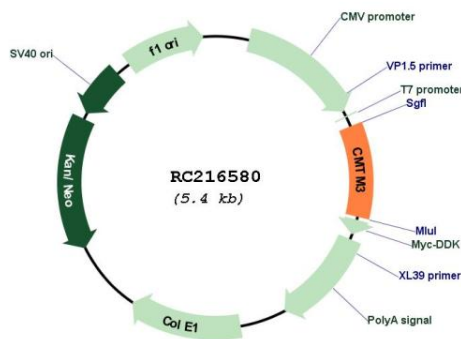
Domains: MARVEL

Protein Families: Transmembrane

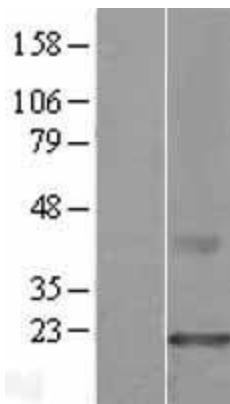
MW: 19.7 kDa

Gene Summary: This gene belongs to the chemokine-like factor gene superfamily, a novel family that is similar to the chemokine and the transmembrane 4 superfamilies of signaling molecules. This gene is one of several chemokine-like factor genes located in a cluster on chromosome 16. Alternatively spliced transcript variants containing different 5' UTRs, but encoding the same protein, have been identified. [provided by RefSeq, Jul 2008]

Product images:



Circular map for RC216580



Western blot validation of overexpression lysate (Cat# [LY405702]) using anti-DDK antibody (Cat# [TA50011-100]). Left: Cell lysates from untransfected HEK293T cells; Right: Cell lysates from HEK293T cells transfected with [RC216635] using transfection reagent MegaTran 2.0 (Cat# [TT210002]).