

Product datasheet for RC216572

BMP1 (NM_006129) Human Tagged ORF Clone

Product data:

Product Type:	Expression Plasmids
Product Name:	BMP1 (NM_006129) Human Tagged ORF Clone
Tag:	Myc-DDK
Symbol:	BMP1
Synonyms:	OI13; PCOLC; PCP; PCP2; TLD
Mammalian Cell Selection:	Neomycin
Vector:	pCMV6-Entry (PS100001)
E. coli Selection:	Kanamycin (25 ug/mL)
ORF Nucleotide Sequence:	>RC216572 representing NM_006129 Red=Cloning site Blue=ORF Green=Tags(s)

TTTTGTAATACGACTCACTATAGGGCGGCCGGAATTCGTCGACTGGATCCGGTACCGAGGAGATCTGCC
GCC**CGATCGCC**

ATGCCCGCGTGGCCCGCTGCCGCTGCTGCTCGGGCTGCTGCTGCCCGCTCCCGCCGGCCGCTGG
ACTTGGCCGACTACACCTATGACCTGGCGGAGGAGGACGACTCGGAGCCCTCACTACAAGACCCCTG
CAAGGCGGCTGCCTTTCTGGGGACATTGCCCTGGACGAAGAGGACCTGAGGGCCTCCAGGTACAGCAG
GCTGTGGATCTCAGACGGCACACAGCTCGTAAGTCTCCATCAAAGCTGCAGTTCAGGAAACACTTCTA
CCCCAGCTGCCAGACCAACGGGCAGCCTCAGAGGGGAGCCTGTGGGAGATGGAGAGGTAGATCCCG
TAGCCCGCGGGCGGCGACGTCCCGACCAGAGCGTGTGGCCCGATGGGGTCATCCCTTTGTATTGGG
GGAAACTTCACTGGTAGCCAGAGGGCAGTCTCCGGCAGGCCATGAGGCACTGGGAGAAGCACACCTGTG
TCACCTTCTGGAGCGCACTGACGAGGACAGCTATATTGTGTTACCTATCGACCTTGGCGGTGCTGCTC
CTACGTGGGTGCGCCGGCGGGGCCCCAGGCCATCTCCATCGGCAAGAAGTGTGACAAGTTGGGCATT
GTGGTCCACGAGCTGGCCACGTCGTCGGCTTCTGGCACGAACACACTCGGCCAGACCGGGACCGCCACG
TTTCCATCGTTTCGTGAGAACATCCAGCCAGGGCAGGAGTAACTTCTGAAGATGGAGCCTCAGGAGGT
GGAGTCCCTGGGGAGACCTATGACTTCGACAGCATCATGCATTACGCTCGGAACACATTCTCAGGGGC
ATCTTCTGGATACCATTGTCCCAAGTATGAGGTGAACGGGGTAAAACCTCCCATTGGCCAAAGGACAC
GGCTCAGCAAGGGGACATTGCCCAAGCCGCAAGCTTTACAAGTGCCACGCTGTGGAGAGACCCGTGCA
AGACAGCACAGGCAACTTCTCCTCCCCTGAATACCCCAATGGCTACTCTGCTCACATGCACTGCGTGTGG
CGCATCTCTGTACACCCGGGGAGAAGATCATCTGAACTTACGTCCTGGACCTGTACCGCAGCCGCC
TGTGCTGGTACGACTATGTGGAGGTCCGAGATGGCTTCTGGAGGAAGGCGCCCTCCGAGGCCGCTTCTG
CGGGTCCAAACTCCCTGAGCCTATCGTCTCCACTGACAGCCGCTCTGGGTTGAATTCGCAGCAGCAGC
AATTGGGTTGAAAGGGCTTCTTTGAGTCTACGAAGCCATCTGCGGGGGTATGTGAAAAGGACTATG
GCCACATTCAATCGCCAACTACCCAGACGATTACCGCCAGCAAAGTCTGCATCTGGCGGATCCAGGT
GTCTGAGGGCTTCCAGTGGCCTCACATTCCAGTCTTTGAGATTGAGCGCCACGACAGCTGTGCCTAC



[View online »](#)

GACTATCTGGAGGTGCGCGACGGGCACAGTGAGAGCAGCACCCCTCATCGGGCGCTACTGTGGCTATGAGA
 AGCCTGATGACATCAAGAGCACGTCCAGCCGCCTCTGGCTCAAGTTCGTCTCTGACGGGTCCATTAACAA
 AGCGGGCTTTGCCGTCACCTTTTCAAAGAGGTGGACGAGTGCTCTCGGCCAACCGCGGGGCTGTGAG
 CAGCGGTGCCCAACACCCTGGGAGCTACAAGTGCAGCTGTGACCCCGGTACGAGCTGGCCCCAGACA
 AGCGCCGTGTGAGGCTGCTTGTGGCGGATTCTCACCAAGCTCAACGGCTCCATCACCAGCCCGGGCTG
 GCCCAAGGAGTACCCCCCAACAAGAAGTGCATCTGGCAGCTGGTGGCCCCACCCAGTACCGCATCTCC
 CTGCAGTTTGACTTATTTGAGACAGAGGGCAATGATGTGTGCAAGTACGACTTCGTGGAGGTGCGCAGTG
 GACTCACAGCTGACTCCAAGCTGCATGGCAAGTCTGTGGTTCTGAGAAGCCCGAGGTATCACCTCCCA
 GTACAACAACATGCGCGTGGAGTTCAAGTCCGACAACACCGTGTCCAAAAAGGGTTC AAGGCCACTTC
 TTCTCAGACAAGGACGAGTGCTCCAAGGATAACGGCGGCTGCCAGCAGGACTGCGTCAACACGTTTCGGCA
 GTTATGAGTGCCAATGCCGAGTGGCTTCGTCTCCATGACAACAAGCAGACTGCAAAGAAGCCGGCTG
 TGACCACAAGGTGACATCCACCAGTGGTACCATCACCAGCCCAACTGGCTGACAAGTATCCCAGCAAG
 AAGGAGTGACAGTGGCCATCTCCAGCACCCCGGGCACCGGGTCAAGCTGACCTTCATGGAGATGGACA
 TCGAGTCCAGCCTGAGTGTGCTACGACCACCTAGAGGTGTTGACGGGCGAGACGCCAAGGCCCCCGT
 CCTCGGCCGCTTCTGTGGGAGCAAGAAGCCGAGCCCGTCTGGCCACAGCAGCCGATGTTCTCGCGC
 TTCTACTCAGATAACTCGGTCCAGCGAAAGGGCTTCCAGGCCCTCCACGCCACAGAGTGGCGGGGCCAGG
 TACGGGACAGCTGAAGACCAAGGACCTTTACTCCACGCCAGTTTGGCGACAACAACCTACCCTGGGGG
 TGTGGACTGTGAGTGGGTCAATTGTGGCCGAGGAAGGCTACGGCGTGGAGCTCGTGTTCAGACCTTTGAG
 GTGGAGGAGGAGACCGACTGCGGCTATGACTACATGGAGCTCTTCGACGGCTACGACAGCACAGCCCCCA
 GGCTGGGGCGCTACTGTGGCTCAGGGCTCCTGAGGAGGTGACTCGGGGGAGATTCTGTCTGGTGAA
 GTTCCACTCGGATGACACCATCACCAAAAAAGGTTTCCACCTGCGATACACCAGCACCAAGTTCAGGAC
 AACTCCACAGCAGGAAG

ACGCGTACGCGGCGCTCGAGCAGAACTCATCTCAGAAGAGGATCTGGCAGCAAATGATATCCTGGATT
 ACAAGGATGACGACGATAAGGTTTAA

Protein Sequence:

>RC216572 representing NM_006129
Red=Cloning site Green=Tags(s)

MPGVARLPLLLGLLLLPRPGRPLDLADYTYDLAEEDDSEPLNYKDPCKAAFLGDIALDEEDLRAFVQQQ
 AVDLRRHTARKSSIKAAPVPGNTSTPSCQSTNGQPORGACGRWRGRSRRRAATSRRPERVWPDGVIPIFVIG
 GNFTGSQRAVFRQAMRHWEKHTCVTFLERTDEDSYIVFTYRPGCCSYVGRGGGQQAISIGKNCDFGI
 VVHELGHVGVFWHEHTRPDRDRHVSIVRENIQPGQEYNFLKMEPQEVESLGETYDFDSIMHYARNTFSRG
 IFLDTIVPKYEVNGVKPPIGQRTRL SKGDI AQARKLYKCPACGETLQDSTGNFSSPEYPNGYSAHMHCVW
 RISVTPGEKIIILNFTSLDL YRSRLCWYDYVEVRDGFWRKAPLRGRFCGSKLPEPIVSTDSRLWVEFRSS
 NWWGKGF FAVYEAI CGGDVKKDYGHIQSPNYPDDYRPSKVICIWRIQVSEGFHVGLTFQSFEIERHDSCAY
 DYLEV RDGHSESSTLIGRYCGYEKPD DIKSTSSRLWLFVSDGSINKAGFAVNFKEVDECSRPNRGGCE
 QRCLNTLGSYKCSDPGYELAPDKRRCEAACGGFLTKLNGSITSPGWPKEYPPNKNCIWQLVAPTQYRIS
 LQFDL FETEGNDVCKYDFVEVRSGLTADSKLHGKFCGSEKPEVITSQYNNMRVEFKSDNTVSKKGFKAHF
 FSDKDECSKDNNGCQDCVNTFGSYECQCRSGFVLHDNKHDCKEAGCDHKVTSTSGTITSPNWPDKYPSK
 KECTWAISSTPGHRVKLTFMEMDIESQPECAYDHLEVFDGRDAKAPVLRGFCGSKKPEPVLATGSRMFLR
 FYSDNSVQRKGFQASHATECGGQVRADVKTDLYSHAQFGDNNYPGGVDCIEWIVAAEEGYVELVFQTFE
 VEEETDCGYDYMELFDGYDSTAPRLGRYCGSGPPEEVYSAGDSVLVKFHSDDTITKKGHFLRYTSTKFDQD
 TLHSRK

TRTRPLEQKLISEEDLAANDILDYKDDDDKV

Chromatograms:

https://cdn.origene.com/chromatograms/mg3128_c05.zip

Restriction Sites:

Sgfl-MluI

Cloning Scheme:


ACCN: NM_006129

ORF Size: 2958 bp

OTI Disclaimer: The molecular sequence of this clone aligns with the gene accession number as a point of reference only. However, individual transcript sequences of the same gene can differ through naturally occurring variations (e.g. polymorphisms), each with its own valid existence. This clone is substantially in agreement with the reference, but a complete review of all prevailing variants is recommended prior to use. [More info](#)

OTI Annotation: This clone was engineered to express the complete ORF with an expression tag. Expression varies depending on the nature of the gene.

Components: The ORF clone is ion-exchange column purified and shipped in a 2D barcoded Matrix tube containing 10ug of transfection-ready, dried plasmid DNA (reconstitute with 100 ul of water).

Reconstitution Method:

1. Centrifuge at 5,000xg for 5min.
2. Carefully open the tube and add 100ul of sterile water to dissolve the DNA.
3. Close the tube and incubate for 10 minutes at room temperature.
4. Briefly vortex the tube and then do a quick spin (less than 5000xg) to concentrate the liquid at the bottom.
5. Store the suspended plasmid at -20°C. The DNA is stable for at least one year from date of shipping when stored at -20°C.

RefSeq: [NM_006129.5](#)

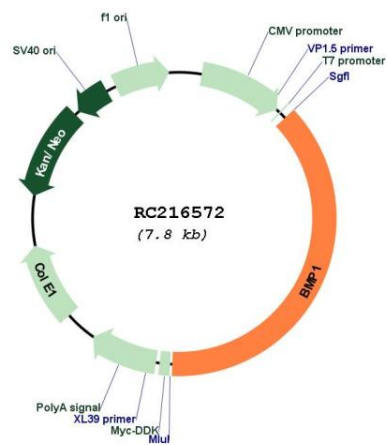
RefSeq Size: 3552 bp

RefSeq ORF: 2961 bp

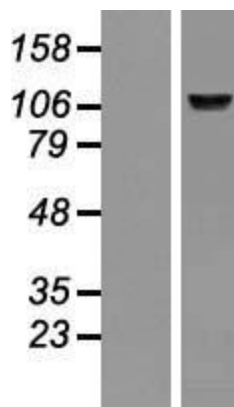
Locus ID: 649
UniProt ID: [P13497](#)
Cytogenetics: 8p21.3
Protein Families: Druggable Genome, Protease
MW: 111.21 kDa

Gene Summary: This gene encodes a protein that is capable of inducing formation of cartilage in vivo. Although other bone morphogenetic proteins are members of the TGF-beta superfamily, this gene encodes a protein that is not closely related to other known growth factors. This gene is expressed as alternatively spliced variants that share an N-terminal protease domain but differ in their C-terminal region. [provided by RefSeq, Aug 2008]

Product images:



Circular map for RC216572



Western blot validation of overexpression lysate (Cat# [LY416856]) using anti-DDK antibody (Cat# [TA50011-100]). Left: Cell lysates from untransfected HEK293T cells; Right: Cell lysates from HEK293T cells transfected with RC216572 using transfection reagent MegaTran 2.0 (Cat# [TT210002]).