

Product datasheet for **RC216570**

PI4KB (NM_002651) Human Tagged ORF Clone

Product data:

Product Type:	Expression Plasmids
Product Name:	PI4KB (NM_002651) Human Tagged ORF Clone
Tag:	Myc-DDK
Symbol:	PI4KB
Synonyms:	NPIK; PI4K-BETA; PI4K92; PI4KBETA; PI4KIII; PI4KIIIBETA; PIK4CB
Mammalian Cell Selection:	Neomycin
Vector:	pCMV6-Entry (PS100001)
E. coli Selection:	Kanamycin (25 ug/mL)



[View online »](#)

ORF Nucleotide
Sequence:

>RC216570 representing NM_002651
 Red=Cloning site Blue=ORF Green=Tags(s)

TTTTGTAATACGACTCACTATAGGGCGGCCGGGAATTCGTCGACTGGATCCGGTACCGAGGAGATCTGCC
 GCCGCGATCGCC

ATGAGATTCTTGAAGCTCGAAGTCTGGCTGTGGCCATGGGAGATACAGTAGTGGAGCCTGCCCCCTTGA
 AGCCAACCTCTGAGCCCACTTCTGGCCACCAGGGAATAATGGGGGTCCCTGCTAAGTGTATCACGGA
 GGGGTTCGGGAACTATCAGTGATTGACCTGAGGTGGCCAGAAGGCCTGCCAGGAGGTGTTGGAGAAA
 GTCAAGCTTTTGCATGGAGGCGTGGCAGTCTCTAGCAGAGGCACCCCACTGGAGTTGGTCAATGGGGATG
 GTGTGGACAGTGAGATCCGTTGCCTAGATGATCCACCTGCCAGATCAGGGAGGAGGAAGATGAGATGGG
 GGCCGCTGTGGCCTCAGGCACAGCCAAAGGAGCAAGAAGACGGCGGCAGAACTCAGCTAAACAGTCT
 TGGCTGCTGAGGCTGTTGAGTCAAACCTGTTGACATCTCCATGGCCATTTACACCTGTATAACTCCA
 AGGAGCCTGGAGTACAAGCCTACATTGGCAACCGGCTCTTCTGCTTCGCAACGAGGACGTGGACTTCTA
 TCTGCCCAAGTTGCTTAACATGTACATCCACATGGATGAGGACGTGGGTGATGCCATTAAGCCCTACATA
 GTCCACCGTTGCCGCCAGAGCATTAACTTTCCCTCCAGTGTGCCCTGTTGCTTGGGGCCTATTCTTCAG
 ACATGCACATTTCCACTCAACGACACTCCCGTGGGACCAAGCTACGGAAGCTGATCCTCTCAGATGAGCT
 AAAGCCAGCTCACAGGAAGAGGGAGCTGCCCTCCTTGAGCCCGGCCCTGACACAGGGGTGTCTCCCTCC
 AAAAGGACTCACAGCGCTTAAGTCAAGTCCACTGCCAGCATAAGTCTCAGCAGCAACCTGAAACGAA
 CAGCCAGCAACCCCTAAAGTGGAGAATGAGGATGAGGAGCTCTCCTCCAGCACCGAGAGTATTGATAATTC
 ATTCAGTTCCTGTTGACTGGCTCCTGAGAGAGAATTCATCAAGTCCCTGATGGCGATCGGCAAGCGG
 CTGGCCACGCTCCCCACAAAGAGCAGAAAACACAGAGGCTGATCTCAGAGCTCTCCCTGCTCAACCATA
 AGCTCCCTGCCGAGTCTGGCTGCCACTGCTGGCTTTGACCACCAGTGGTCCGTGTACCCACACACA
 GGCTGTTGCTCCTCAACTCCAAGGACAAGGCTCCCTACCTGATTTATGTGGAAGTCCCTGAATGTGAAAAC
 TTTGACACCACAGTGTCCCTGCCCGGATCCCCGAGAACCGAATTCGGAGTACGAGGTCCGTAGAAAAC
 TGCCCGAATGTGGTATTACCCATGAGCAGCGAGCTGGCAGCTTCAGCACTGTGCCCAACTATGACAACGA
 TGATGAGGCTGGTGGTGGATGACATAGGCGAGCTGCAAGTGGAGCTCCCCGAAGTGCATACCAACAGC
 TGTGACAACATCTCCAGTCTCTGTGGACAGCATCACAGCCAGGAGCAAGGAGCCTGTGTTTATTG
 CAGCAGGGGACATCCGCCGGCCTTTCCGAACAGCTGGCTCATACCCCGACAGCCTTCAAACGAGACCC
 AGAAGATCCTTCTGCAGTTGCTCTCAAAGAGCCCTGGCAGGAGAAAGTACGGCGGATCAGAGAGGGCTCC
 CCCTACGGCCATCTCCCAATTGGCGGCTCCTGTCAAGTATTGTCAAGTGTGGGGATGACCTTCGGCAAG
 AGCTTCTGGCCTTTCAGGTGTTGAAGCAACTGCAGTCCATTTGGGAACAGGAGCGAGTGCCCTTTGGAT
 CAAGCCATACAAGATTCTTGATTTCCGGTGTAGTGGCATGATTGAACCAAGTGGTCAATGCTGTGTCC
 ATCCATCAGGTGAAGAAACAGTCAAGCTCTCCTTGTCTGATTACTTCTACAGGAGCACGGCAGTTACA
 CCACTGAGGCAATTCCTCAGTGCACAGCGCAATTTGTGCAAAAGTGTGCTGGGTACTGCTTGGTCTGCTA
 CCTGCTGCAAGTCAAGGACAGACACAATGGGAATATCCTTTTGGACGCAGAAAGGCCACATCATCCACATC
 GACTTTGGCTTCACTCCTCCAGCTCACCCGAAATCTGGGCTTTGAGACGTGAGCCTTTAAGCTGACCA
 CAGAGTTTGTGGATGTGATGGCGGCTGGATGGCGACATGTTCAACTACTATAAGATGCTGATGCTGCA
 AGGGCTGATTGCCGCTCGGAAACACATGGACAAGGTGGTGCAGATCGTGGAGATCATGCAGCAAGTTCT
 CAGCTTCCCTTCCATGGCTCCAGCACCATTGAAAACCTCAAAGAGAGGTTCCACATGAGCATGACTG
 AGGAGCAGCTGCAGTGTGTTGGAGCAGATGGTGGATGGCAGTATGCGGTCTATCACCACCAAACCTCTA
 TGACGGCTTCCAGTACCTACCAACGGCATCATG

ACGCGTACGCGCGGCTCGAGCAGAACTCATCTCAGAAGAGGATCTGGCAGCAATGATATCCTGGATT
 ACAAGGATGACGACGATAAGGTTTAA

Protein Sequence: >RC216570 representing NM_002651
 Red=Cloning site Green=Tags(s)

MRFL EARSLAVAMGDTVVEPAPLKPTSEPTSGPPGNNNGSLLSVITEGVGELSVIDPEVAQKACQEVLEK
 VKLLHGGVAVSSRGTPLELVNGDGDVSEIRCLDDPPAQIREEEDEMGAAVASGTAKGARRRRQNNNAKQS
 WLLRFLFESKLFDISMAISYLNSKEPGVQAYIGNRLF CFRNEDVDFYLPQLLNMYIHMDDEDVGD AIKPYI
 VHRCRQSINFLQCALLLGAYSSDMHISTQRHSRGTCLRKLILSDELKPAHRKRELPSPAPDTGLSPS
 KRTHQRSKSDATASISLSSNLKRTASNPKVENEDEELSSSTESIDNSFSSPVRLAPEREFIKSLMAIGKR
 LATLPTKEQKTQRLISELSLLNHLKPARVWLPTAGFDHHVVRVPHQTAVVLNSKDKAPYLIYVEVLECE
 NFDTTSVPARIPENRIRSTRSVENLPECGITHEQRAGSFSTVPNYDNDDEAWSVDDIGELQVELPEVHTNS
 CDNISQFSVDSITSQESKEPVFIAAGDIRRRLSEQLAHTPTAFKRDPEDPSAVALKEPWQEKVRRIREGS
 PYGHLPNWRLLSVIVKCGDDL RQELLAFQVLKQLQSIWEQERVPLWIKPYKILVISADSGMIEPVVNAV
 S IHQVKKQSLSLLDYFLQE HGSYTTEAFLSAQRNFVQSCAGYCLVCYLLQVKDRHNGNILLDAEGHIIHI
 DFGFILSSPRNLGFETSAFKLTTEFVDVMGGLDGMFNYYKMLMLQGLIAARKHMDKVVQIVEIMQQGS
 QLPCFHGSS TIRNLKERFHMSMTEEQLQLLVEQMVDGSMRSITTKLYDGFQYLTNGIM

TRTRPLEQKLI SEEDLAANDILDYKDDDDKV

Restriction Sites: Sgfl-MluI

Cloning Scheme:


ACCN: NM_002651

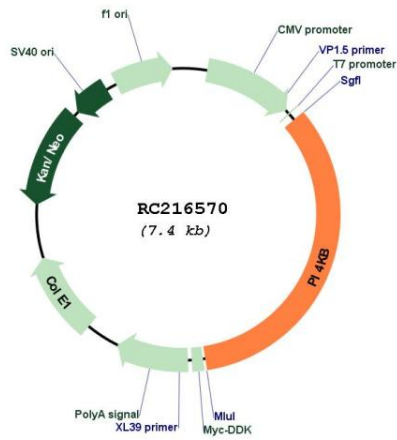
ORF Size: 2484 bp

OTI Disclaimer: Due to the inherent nature of this plasmid, standard methods to replicate additional amounts of DNA in E. coli are highly likely to result in mutations and/or rearrangements. Therefore, OriGene does not guarantee the capability to replicate this plasmid DNA. Additional amounts of DNA can be purchased from OriGene with batch-specific, full-sequence verification at a reduced cost. Please contact our customer care team at custsupport@origene.com or by calling 301.340.3188 option 3 for pricing and delivery.

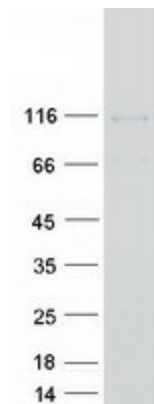
The molecular sequence of this clone aligns with the gene accession number as a point of reference only. However, individual transcript sequences of the same gene can differ through naturally occurring variations (e.g. polymorphisms), each with its own valid existence. This clone is substantially in agreement with the reference, but a complete review of all prevailing variants is recommended prior to use. [More info](#)

OTI Annotation:	This clone was engineered to express the complete ORF with an expression tag. Expression varies depending on the nature of the gene.
Components:	The ORF clone is ion-exchange column purified and shipped in a 2D barcoded Matrix tube containing 10ug of transfection-ready, dried plasmid DNA (reconstitute with 100 ul of water).
Reconstitution Method:	<ol style="list-style-type: none">1. Centrifuge at 5,000xg for 5min.2. Carefully open the tube and add 100ul of sterile water to dissolve the DNA.3. Close the tube and incubate for 10 minutes at room temperature.4. Briefly vortex the tube and then do a quick spin (less than 5000xg) to concentrate the liquid at the bottom.5. Store the suspended plasmid at -20°C. The DNA is stable for at least one year from date of shipping when stored at -20°C.
RefSeq:	NM_002651.4
RefSeq Size:	3471 bp
RefSeq ORF:	2487 bp
Locus ID:	5298
UniProt ID:	Q9UBF8
Cytogenetics:	1q21.3
Domains:	PI3_PI4_kinase
Protein Families:	Druggable Genome
Protein Pathways:	Inositol phosphate metabolism, Metabolic pathways, Phosphatidylinositol signaling system
MW:	92.5 kDa
Gene Summary:	Phosphorylates phosphatidylinositol (PI) in the first committed step in the production of the second messenger inositol-1,4,5,-trisphosphate (PIP). May regulate Golgi disintegration/reorganization during mitosis, possibly via its phosphorylation. Involved in Golgi-to-plasma membrane trafficking (By similarity).[UniProtKB/Swiss-Prot Function]

Product images:



Circular map for RC216570



Coomassie blue staining of purified PI4KB protein (Cat# [TP316570]). The protein was produced from HEK293T cells transfected with PI4KB cDNA clone (Cat# RC216570) using MegaTran 2.0 (Cat# [TT210002]).