

Product datasheet for RC216566

CHMP1A (NM_001083314) Human Tagged ORF Clone

Product data:

Product Type:	Expression Plasmids
Product Name:	CHMP1A (NM_001083314) Human Tagged ORF Clone
Tag:	Myc-DDK
Symbol:	CHMP1A
Synonyms:	CHMP1; PCH8; PCOLN3; PRSM1; VPS46-1; VPS46A
Mammalian Cell Selection:	Neomycin
Vector:	pCMV6-Entry (PS100001)
E. coli Selection:	Kanamycin (25 ug/mL)
ORF Nucleotide Sequence:	>RC216566 representing NM_001083314 Red=Cloning site Blue=ORF Green=Tags(s)

TTTTGTAATACGACTCACTATAGGGCGCCGGGAATTCGTCGACTGGATCCGGTACCGAGGAGATCTGCC
GCC**CGATCGC**C

ATGGACGTTACGGCGAAGCAGCTGGAGAAGCTGGCCAAGAAGGCGGAGAAGGACTCCAAGGCGGAGCAG
GCCAAAGTGAAGAAGGCCCTTTCGAGAAAAATGTAGAGTGTGCCCGTGTGTATGCCGAGAACGCCATCC
GCAAGAAGAACGAAGGTGTGAAGTGGCTTCGGATGGCGTCCCGCTAGACGCAGTGGCTCCAAGGTGCA
GACAGCTGTGACTATGAAGGGGGTGACCAAGAATATGGCCAGGTGACCAAGCCCTGGACAAGGCCCTG
AGCACCATGGACCTGCAGAAGGTCTCCTCAGTGTGGACAGGTTGAGCAGCAGGTGCAGAACCTGGACG
TCCATACATCGGTGATGGAGGACTCCATGAGCTCGGCCACCACCTGACCACGCCGAGGAGCAGGTGGA
CAGCCTCATCATGCAGATCGCCGAGGAGAATGGCTGGAGGTGCTGGACCAGCTCAGCCAGCTGCCCGAG
GGCGCCTCTGCCGTGGGCGAGAGCTCTGTGCGCAGCCAGGAGGACCAGCTGTACGGAGGTTGGCCGCT
TGAGGAACTAGCCGTGCCCGCCGGTGTGACCCGCTCTGCCCGTGTGTGCTGGAAGGCTCCTGTCTCT
CTCCCCACCGCTTTCCTTTGTGCTGACCCCGGGGCTGCGGCCGCGAGCCACTCTGCGTCTCTCAC
CTGCCAGGCTGCGTGGCCT

ACGCGTACGCGGCCGCTCGAGCAGAACTCATCTCAGAAGAGGATCTGGCAGCAAATGATATCCTGGATT
ACAAGGATGACGACGATAAGGTTTAA



[View online »](#)

Protein Sequence: >RC216566 representing NM_001083314
 Red=Cloning site Green=Tags(s)

MDVHGEAAGEAGQEGGEGLQGGAGQSEEGPSAEKCRVPCVCRCRERHPQEERRCELASDGVPRRRSGLQGA
 DSCDYEGGDQEQYGPQDQSPGGQPEHHGPAEGLLSDGQVRAAGAEPGRPYIGDGGLHELGHHPDHAAGAGG
 QPHHADRRGEWPGGAGPAQPAARGRLCRGRELCAQPGGPAVTEVGRLEELAVPRRCAPPLPRDVLEGSCP
 LPTASCLCADPAGLRPAATLRLSPARPAWP

TRTRPLEQKLISEEDLAANDILDYKDDDDKV

Chromatograms: https://cdn.origene.com/chromatograms/ja1486_a09.zip

Restriction Sites: SgfI-MluI

Cloning Scheme:

Cloning sites used for ORF Shuttling:



* The last codon before the Stop codon of the ORF

ACCN: NM_001083314

ORF Size: 720 bp

OTI Disclaimer: The molecular sequence of this clone aligns with the gene accession number as a point of reference only. However, individual transcript sequences of the same gene can differ through naturally occurring variations (e.g. polymorphisms), each with its own valid existence. This clone is substantially in agreement with the reference, but a complete review of all prevailing variants is recommended prior to use. [More info](#)

OTI Annotation: This clone was engineered to express the complete ORF with an expression tag. Expression varies depending on the nature of the gene.

Components: The ORF clone is ion-exchange column purified and shipped in a 2D barcoded Matrix tube containing 10ug of transfection-ready, dried plasmid DNA (reconstitute with 100 ul of water).

Reconstitution Method:

1. Centrifuge at 5,000xg for 5min.
2. Carefully open the tube and add 100ul of sterile water to dissolve the DNA.
3. Close the tube and incubate for 10 minutes at room temperature.
4. Briefly vortex the tube and then do a quick spin (less than 5000xg) to concentrate the liquid at the bottom.
5. Store the suspended plasmid at -20°C. The DNA is stable for at least one year from date of shipping when stored at -20°C.

RefSeq: [NM_001083314.4](#)

RefSeq Size: 2353 bp

RefSeq ORF: 723 bp

Locus ID: 5119

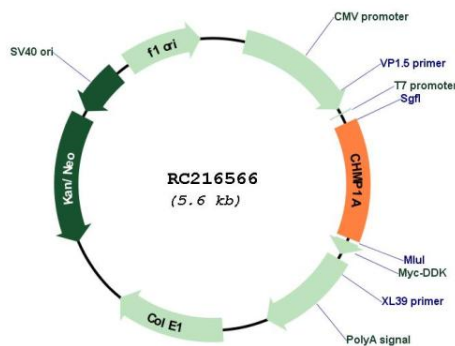
Cytogenetics: 16q24.3

Protein Families: Druggable Genome, Transcription Factors

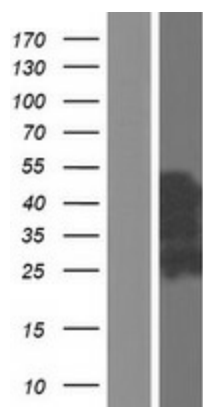
MW: 24.5 kDa

Gene Summary: This gene encodes a member of the CHMP/Chmp family of proteins which are involved in multivesicular body sorting of proteins to the interiors of lysosomes. The initial prediction of the protein sequence encoded by this gene suggested that the encoded protein was a metalloproteinase. The nomenclature has been updated recently to reflect the correct biological function of this encoded protein. Several transcripts encoding different isoforms have been found for this gene. [provided by RefSeq, Dec 2012]

Product images:



Circular map for RC216566



Western blot validation of overexpression lysate (Cat# [LY421212]) using anti-DDK antibody (Cat# [TA50011-100]). Left: Cell lysates from untransfected HEK293T cells; Right: Cell lysates from HEK293T cells transfected with RC216566 using transfection reagent MegaTran 2.0 (Cat# [TT210002]).