

## Product datasheet for RC216565

### SNX16 (NM\_022133) Human Tagged ORF Clone

#### Product data:

Product Type:	Expression Plasmids
Product Name:	SNX16 (NM_022133) Human Tagged ORF Clone
Tag:	Myc-DDK
Symbol:	SNX16
Mammalian Cell Selection:	Neomycin
Vector:	pCMV6-Entry (PS100001)
E. coli Selection:	Kanamycin (25 ug/mL)
ORF Nucleotide Sequence:	>RC216565 ORF sequence Red=Cloning site Blue=ORF Green=Tags(s)

TTTTGTAATACGACTCACTATAGGGCGGCCGGAATTCGTCGACTGGATCCGGTACCGAGGAGATCTGCC  
GCC**CGATCGCC**

ATGGCAACTCCTTATGTCCCAGTTCCTATGCCCATAGGAACTCTGCTTCCAGTTTTACAACAACAGAA  
ATCAAAGAAGTTCTTCTTTGGCAGTGTCTCAACAAGCTCAAATCTTCTAAGGGCCAGTTAGAAGACTC  
AAATATGGGTAATTTAAACAGACAAGTGTTCCTGATCAAATGGATAATACTTCATCTGTCTGTAGCAGT  
CCCCTCATTAGGACTAAATTTACAGGTACAGTTCCTCCATTGAGTATTCTACTAGACCAAGAGACTG  
AAGAACAAAATCCGGAACAGTGAATTGGGAAGATAGACCATCTACACCTACTATACTGGGTTATGAAGT  
GATGGAAGAAAGAGCTAAATTTACTGTATATAAAATACTAGTAAAGAAAACCCAGAAAGAAAGCTGGGTA  
GTTTTCAGAAGATACACTGACTTCTCTAGGCTTAATGACAAATTAAGAGATGTTTCCAGTGTTCGAC  
TAGCACTTCTCCAAAACGCTGGTTAAAGATAATTACAATGCTGACTTTTTAGAAGACAGACAATTAGG  
ATTACAAGCGTTTCTTAAAATTTAGTAGCTCACAAGGACATTGCTAACTGCCTTGCACTGAGAGAATTT  
CTTTGTTGGATGATCCACCGGTCCATTTGATAGCCTAGAAGAAAGCAGGGCATTCTGTGAACTTTAG  
AAGAGACAACTACCGCTTACAGAAAGAACTACTTGA AAAACAAAAGGAGATGGAATCACTAAAGAACT  
GCTCAGTGAGAAGCAACTTCATATAGACTTTAGAGAACAGAATCAGAACATTGCTTTAGAACCTGAA  
GAATCACTGGATGTGTCAGAAACAGAAGGTGAACAGATCCTAAAGTGGAGTCTCTGCCTTGAGGTTG  
ATCAAGATGTCCTGGATGAAGAATCTAGAGCTGATAATAAACCATGCTTAAGTTTTAGTGAACCTGAAAA  
TGCTGTATCAGAGATAGAAGTAGCAGAAGTGGCATATGATGCTGAAGAAGAC

**ACGCGT**ACGCGGCCGCTCGAGCAGAACTCATCTCAGAAGAGGATCTGGCAGCAAATGATATCCTGGATT  
ACAAGGATGACGACGATAAGGTTTAA



[View online »](#)

**Protein Sequence:** >RC216565 protein sequence  
Red=Cloning site Green=Tags(s)

MATPYVPVMPPIGNSASSFTTNRNQRSSSFSGSVSTSSNSSKGQLEDSNMGNFKQTSVPDQMDNTSSVCSS  
 PLIRTKFTGTASSIEYSTRPRDTEEQNPETVNWEDRPSTPTILGYEVMEERAKFTVYKILVKKTPEESWV  
 VFRRYTDF SRLNDKLEMFPGFRLALPPKRWFKDNYNADFLEDROLGLQAFQLNLVAHKDIANCLAVREF  
 LCLDDPPGPFDSLEESRAFCETLEETNYRLQKELLEKQKEMESLKKLLSEKQLHIDTLENRIRTLSEPE  
 ESLDVSETEGEQILKVESSALEVDQDVLDEESRADNKPCLSFSEPENAVSEIEVAEVAAYDAEED

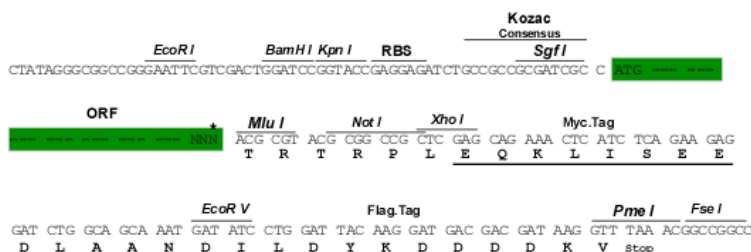
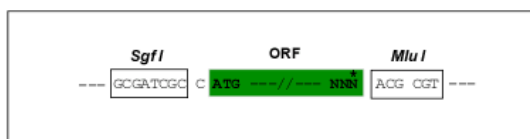
TRTRPLEQKLISEEDLAANDILDYKDDDDKV

**Chromatograms:** [https://cdn.origene.com/chromatograms/mk6336\\_a07.zip](https://cdn.origene.com/chromatograms/mk6336_a07.zip)

**Restriction Sites:** Sgfl-MluI

**Cloning Scheme:**

Cloning sites used for ORF Shuttling:



\* The last codon before the Stop codon of the ORF

**ACCN:** NM\_022133

**ORF Size:** 1032 bp

**OTI Disclaimer:** The molecular sequence of this clone aligns with the gene accession number as a point of reference only. However, individual transcript sequences of the same gene can differ through naturally occurring variations (e.g. polymorphisms), each with its own valid existence. This clone is substantially in agreement with the reference, but a complete review of all prevailing variants is recommended prior to use. [More info](#)

**OTI Annotation:** This clone was engineered to express the complete ORF with an expression tag. Expression varies depending on the nature of the gene.

**Components:** The ORF clone is ion-exchange column purified and shipped in a 2D barcoded Matrix tube containing 10ug of transfection-ready, dried plasmid DNA (reconstitute with 100 ul of water).

**Reconstitution Method:**

1. Centrifuge at 5,000xg for 5min.
2. Carefully open the tube and add 100ul of sterile water to dissolve the DNA.
3. Close the tube and incubate for 10 minutes at room temperature.
4. Briefly vortex the tube and then do a quick spin (less than 5000xg) to concentrate the liquid at the bottom.
5. Store the suspended plasmid at -20°C. The DNA is stable for at least one year from date of shipping when stored at -20°C.

**RefSeq:** [NM\\_022133.3](#)

**RefSeq Size:** 3471 bp

**RefSeq ORF:** 1035 bp

**Locus ID:** 64089

**UniProt ID:** [P57768](#)

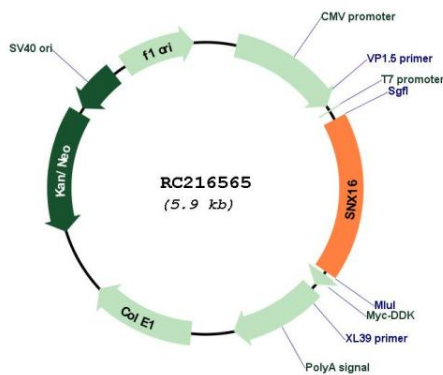
**Cytogenetics:** 8q21.13

**Domains:** PX

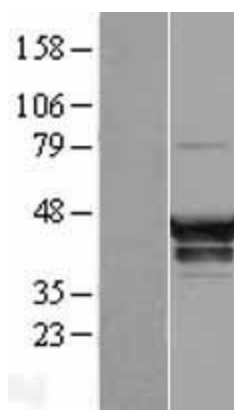
**MW:** 39.2 kDa

**Gene Summary:** This gene encodes a member of the sorting nexin family. Members of this family contain a phox (PX) domain, which is a phosphoinositide binding domain, and are involved in intracellular trafficking. The protein encoded by this gene associates with late endosome membranes as is involved in tubule formation, cholesterol transport, and transport of tetraspanin CD81. The encoded protein also inhibits cell migration and tumorigenesis. [provided by RefSeq, Jan 2017]

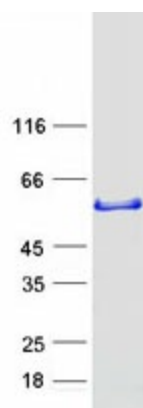
### Product images:



Circular map for RC216565



Western blot validation of overexpression lysate (Cat# [LY411753]) using anti-DDK antibody (Cat# [TA50011-100]). Left: Cell lysates from untransfected HEK293T cells; Right: Cell lysates from HEK293T cells transfected with RC216565 using transfection reagent MegaTran 2.0 (Cat# [TT210002]).



Coomassie blue staining of purified SNX16 protein (Cat# [TP316565]). The protein was produced from HEK293T cells transfected with SNX16 cDNA clone (Cat# RC216565) using MegaTran 2.0 (Cat# [TT210002]).