

Product datasheet for **RC216561**

FAM13A (NM_014883) Human Tagged ORF Clone

Product data:

| | |
|---------------------------|---|
| Product Type: | Expression Plasmids |
| Product Name: | FAM13A (NM_014883) Human Tagged ORF Clone |
| Tag: | Myc-DDK |
| Symbol: | FAM13A |
| Synonyms: | ARHGAP48; FAM13A1 |
| Mammalian Cell Selection: | Neomycin |
| Vector: | pCMV6-Entry (PS100001) |
| E. coli Selection: | Kanamycin (25 ug/mL) |
| ORF Nucleotide Sequence: | >RC216561 representing NM_014883 Red=Cloning site Blue=ORF Green=Tags(s) |

TTTTGTAATACGACTCACTATAGGGCGGCCGGAATTCGTCGACTGGATCCGGTACCGAGGAGATCTGCC
GCC**CGATCGCC**

ATGGGGGCAGGAGCTCTAGCCATCTGTCAAAGTAAAGCAGCGGTTCCGGCTGAAAGAAGACATGAAAAAGA
TAGTGGCAGTGCCATTAATGAACAGAAGGATTTACCTATCAGAAGTTATTTGGAGTCAGTCTCCAAGA
ACTTGAACGGCAGGGGCTCACCGAGAATGGCATTCCAGCAGTAGTGTGGAATATAGTGAATATTTGACG
CAGCATGGACTTACCCAAGAAGTCTTTTTAGGGTGAATGGTAACGTGAAGGTGGTGAACAACCTCGAC
TGAAGTTCGAGAGTGGAGTGCCCGTGGAGCTCGGGAAGGACGGTGATGTCTGCTCAGCAGCCAGTCTGTT
GAAGCTGTTTCTGAGGGAGCTGCCTGACAGTCTGATCACCTCAGCGTTGCAGCCTCGATTCACTCAACT
TTTCAGGATGGCAGAAATGATGTTCCAGGAGAGTAGCTTAAGAGACTTAATAAAAAGAGCTGCCAGACACCC
ACTACTGCCTCCTCAAGTACCTTTGCCAGTTCTTGACAAAAGTAGCCAAGCATCATGTGCAGAATCGCAT
GAATGTTCAACATCTCGCCACTGTATTTGGGCCAAATTGCTTTCATGTGCCACCTGGGCTTGAAGGCATG
AAGAACAGGACCTGTGCAACAAGATAATGGCTAAAATTCTAGAAAATTACAATACCCTGTTTGAAGTAG
AGTATACAGAAAATGATCATCTGAGATGTGAAAACCTGGCTAGGCTTATCATAGTAAAAGAGGTCTATTA
TAAGAATCCCTGCCATCCTTTAACAAGAGGCTTAGAAAAGAGACATGCCAAAACACCTCCAAAAACC
AAGATCCCAAAATCCAGGAGTGAGGGATCTATTCAGGCCACAGAGTACTGCAACCAGAGCTATCTGATG
GCATTCCCTCAGCTCAGCTTGCAGGCTAAGTTATAGAAAAGCTGCTTGAAGACATGAATTCAGCAGAGGG
TGCTATTAGTGCCAAGTTGGTACCCAGTTCACAGGAAGATGAAAGACCTCTGTACCTTTCTATTTGAGT
GCTCATGTACCCCAAGTCAGCAATGTGTCTGCAACCGGAGAACTCTAGAAAAGAACCATCCGATCAGCTG
TAGAACACATCTTTTGTGTTAATAACTCTGGAGGTCAAAGTTCAGAGGACTCAGAACTCTGGAACACT
ATCAGCATCTTCTGCCACATCTGCCAGACAGCGCCGCCAGTCCAAGGAGCAGGATGAAGTTCGACAT
GGGAGAGACAAGGGACTTATCAACAAAAGAAAATACTCCTTCTGGGTTCAACCACCTTGATGATTGTATT
TGAATACTCAGGAAGTCGAAAAGGTACACAAAATACTTTTGGTGTGCTGGAGAAAGGAGCAAGCCTAA
ACGTCAGAAATCCAGTACTAACTTTCTGAGCTTCATGACAATCAGGACGGTCTTGTGAATGAAAGT



[View online »](#)

CTCAATCCACACGATCTCATGAGAGAACTGGACCTGATGATTTTGAATGGATGTCTGATGAAAGGAAAG
 GAAATGAAAAAGATGGTGGACACACTCAGCATTTTGGAGCCCCACAATGAAGATCCAGGAGCATCCAG
 CCTATCTGACACCAAACAGCAGAGAAAATCAAGATGCCGGTGACCAGGAGGAGCCTTTGTCTCCGAAGTG
 CCCAGTCGGACCTGACTGCATTGTGTGATGAAAAAGAACTGGGAAGAGCCTATCCCTGCTTTCTCCTCT
 GGCAGCGGGAGAACAGTACTCTGATGAAGCCCACCTCTCGCCGAGGCTGGGCGCCTGATCCGTGAGT
 GCTGGACGAAGACAGCGACCCCATGCTCTCTCCTCGGTTTACGCTTATGGGCAGAGCAGCAATACTCTG
 GATGACACAGAAGTGCCTCTTCCCAACAACTCCCATTCTTTTATGAGCGCGGAAGCTCCTCTCTGG
 GGTCTATGATGATGAGCAAGAGGACCTGACACCTGCCAGCTCACACGAAGGATTCAGAGCCTTAAAAA
 GAAGATCCGGAAGTTTGAAGATAGATTCGAAGAAGAGAAGAACTACAGACCTTCCACAGTGACAAAAGCA
 GCCAATCCGGAGGTTCTGAAATGGACAAATGACCTTGCCAAATCCGGAGACAACTTAAAGAATCAAAAC
 TAAAGATATCTGAAGAGGACCTAACTCCAGGATGCGGCAGCGAAGCAACACACTCCCAAGAGTTTGG
 TTCCCACTTGAGAAAAGAAGATGAGAAGAAGCAAGAGCTGGTGGATAAAGCAATAAAGCCCAGTGTGAA
 GCCACATTGGAATCTATTAGAGGAAGCTCCAGGAGAAGCGAGCGGAAAGCAGCCGCCCTGAGGACATTA
 AGGATATGACCAAAGACCAGATTGCTAATGAGAAAAGTGGCTCTGCAGAAAAGCTCTGTTATATTATGAAAG
 CATTTCATGGACGCGCGGTAAACAAAGAACGAACGCGAGGTGATGAAGCCACTATACGACAGGTACCGGCTG
 GTCAAACAGATCCTCTCCCGAGCTAACACCATACCCATCATTGGTTCCCCCTCCAGCAAGCGGAGAAAGCC
 CTTTGCTGCAGCAATTATCGAGGGCGAACTGCTTCCTTCTTCAAGGAGATAAAGGAAGAAGAGGAGGG
 GTCAGAAGACGATAGCAATGTGAAGCCAGACTTCATGGTCACTCTGAAAACCGATTTTCAGTGCACGATGC
 TTTCTGGACCAATTCGAAGATGACGCTGATGGATTTATTTCCCAATGGATGATAAAATACCATCAAAAT
 GCAGCCAGGACACAGGGCTTTCAAATCTCCATGCTGCCTCAATACCTGAACTCCTGGAACACCTCCAGGA
 AATGAGAGAAGAAAAGAAAAGGATTGAAAAGAACTTCGGGATTTTGAAGACAACTTTTTCAGACAGAAT
 GGAAGAAATGTCCAGAAGGAAGACCGCACTCCTATGGCTGAAGAATACAGTGAATATAAGCACATAAAGG
 CGAACTGAGGCTCCTGGAGGTCTCATCAGCAAGAGAGACACTGATTCCAAGTCCATG

ACGCGTACGCGGCGCTCGAGCAGAACTCATCTCAGAAGAGGATCTGGCAGCAATGATATCCTGGATT
 ACAAGGATGACGACGATAAGGTTTAA

Protein Sequence:

>RC216561 representing NM_014883
 Red=Cloning site Green=Tags(s)

MGAGALAIQCSCAAVRLKEDMKIIVAVPLNEQKDFTYQKLVFVSLQELERQGLTENGIPAVVWNIIVEYLT
 QHGLTQEGLFRVNGNVKVEQLRLKFESEVPELVGKGDVCSAASLLKFLREL PDSLITSALQPRFIQL
 FQDGRNDVQESSLRDLIKELPDTHYCLLKYLQFLTKVAKHHVQNRMNHNLATVFGPNCFHVPPGLEGM
 KEQDLCKNIMAKILENYNTLFEVEYTENDHLRCENLARIIVKEVYYKNSLPILLTRGLERDMPKPPPKT
 KIPKSRSEGSIQAHRVLQPELSDGIPQLSLRLSYRKACLEDMNSAEGAI SAKLVPSSQEDERPLSPFYLS
 AHVPQVSNVSATGELLERTIRSAVEQHLFDVNNSGGQSSSESESGTLSASSATSARQRRRSKEQDEVHR
 GRDKGLINKENTPSGFNHLDDCILNTQEVEKVHKNFTGCAGERSKPKRQKSSTKSELHDNQDGLVNMES
 LNSTRSHERTPGDDFEWMSDERKGNEKDGHTQHFESPTMKIQEHPSLSDTKQQRNQDAGDQEESEFVSEV
 PQSDLTALCDEKNWEEPIPAFSSWQRENSDSDEAHLSPQAGRLIRQLLDESDPMLSPRFYAYGQSRQYL
 DDETEVPPSPNSHFMRRRSSLSGSYDDEQEDLTPAQLTRRIQSLKKKIRKFEDRFEKRYRPSHSDKA
 ANPEVLKWTNDLAKFRRQLKESLKI SEEDLTPRMRQRSNTLPKSFQSLEKEDEKQELVDKAIKPSVE
 ATLESIQRKLQEKRAESSRPEDIKDMTKDQIANEKVALQKALLYESIHRPVTKNERQVMKPLYDRYRL
 VKQILSRANTIPIIGSPSSKRRSPLLQPIIEGETASFFKEIKEEEESEDDSNVKPDFMVTLKTDF SARC
 FLDQFEDDADGFI SPMDKIPSKCSQDTGLSNLHAASIPELLEHLQEMREEKKRIRKLRDFEDNFRQN
 GRNVQKEDRTPMAEEYSEYKHIKAKLRLLLEVLISKRD TDSKSM

TRTRPLEQKLI SEEDLAANDILDYKDDDDKV

Chromatograms:

https://cdn.origene.com/chromatograms/mk8016_f12.zip

Restriction Sites:

Sgfl-Mlul

Cloning Scheme:


ACCN: NM_014883

ORF Size: 3069 bp

OTI Disclaimer: The molecular sequence of this clone aligns with the gene accession number as a point of reference only. However, individual transcript sequences of the same gene can differ through naturally occurring variations (e.g. polymorphisms), each with its own valid existence. This clone is substantially in agreement with the reference, but a complete review of all prevailing variants is recommended prior to use. [More info](#)

OTI Annotation: This clone was engineered to express the complete ORF with an expression tag. Expression varies depending on the nature of the gene.

Components: The ORF clone is ion-exchange column purified and shipped in a 2D barcoded Matrix tube containing 10ug of transfection-ready, dried plasmid DNA (reconstitute with 100 ul of water).

- Reconstitution Method:**
1. Centrifuge at 5,000xg for 5min.
 2. Carefully open the tube and add 100ul of sterile water to dissolve the DNA.
 3. Close the tube and incubate for 10 minutes at room temperature.
 4. Briefly vortex the tube and then do a quick spin (less than 5000xg) to concentrate the liquid at the bottom.
 5. Store the suspended plasmid at -20°C. The DNA is stable for at least one year from date of shipping when stored at -20°C.

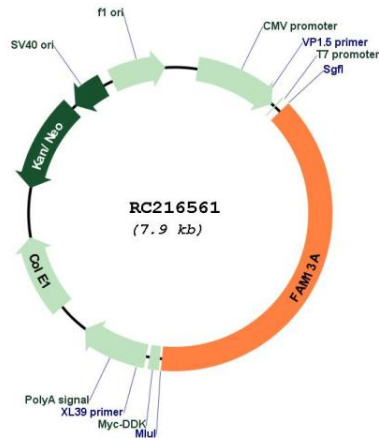
Note: Plasmids are not sterile. For experiments where strict sterility is required, filtration with 0.22um filter is required.

RefSeq: [NM_014883.4](#)

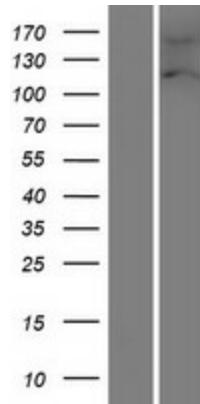
RefSeq Size: 5858 bp

RefSeq ORF: 3072 bp
 Locus ID: 10144
 UniProt ID: [O94988](#)
 Cytogenetics: 4q22.1
 MW: 116.8 kDa

Product images:



Circular map for RC216561



Western blot validation of overexpression lysate (Cat# [LY414954]) using anti-DDK antibody (Cat# [TA50011-100]). Left: Cell lysates from untransfected HEK293T cells; Right: Cell lysates from HEK293T cells transfected with RC216561 using transfection reagent MegaTran 2.0 (Cat# [TT210002]).