

## Product datasheet for RC216560

### CADPS2 (NM\_017954) Human Tagged ORF Clone

#### Product data:

|                           |   |
|---------------------------|---|
| Product Type:             | Expression Plasmids   |
| Product Name:             | CADPS2 (NM_017954) Human Tagged ORF Clone                                   |
| Tag:                      | Myc-DDK   |
| Symbol:                   | CADPS2  |
| Synonyms:                 | CAPS2   |
| Mammalian Cell Selection: | Neomycin  |
| Vector:                   | pCMV6-Entry (PS100001)  |
| E. coli Selection:        | Kanamycin (25 ug/mL)  |
| ORF Nucleotide Sequence:  | >RC216560 representing NM_017954<br>Red=Cloning site Blue=ORF Green=Tags(s) |

TTTTGTAATACGACTCACTATAGGGCGGCCGGAATTCGTCGACTGGATCCGGTACCGAGGAGATCTGCC  
GCC**CGATCGCC**

ATGCTGGACCCGTCTTCCAGCGAAGAGGAGTCCGACGAGGGGCTGGAAGAGGAAAGCCGCGATGTGCTGG  
TGGCAGCCGGCAGCTCGCAGCGAGCTCCTCCAGCCCCGACTCGGGAAGGGCGGGGACGCGCCGGGGCG  
CGCGGGCGGGCGGGCGGCCAGATCTGTGAGCCGAGCCCCTCTGTGCTCAGCGAGGGGCGAGACGAG  
CCCCAGCGGCAGCTGGACGATGAGCAGGAGCGGAGGATCCGCCTGCAGCTCTACGTCTTCGTCTGAGGT  
GCATCGGTACCCCTTCAACGCCAAGCAGCCACCGACATGGCCCGAGGCGAGCAGAAGCTTAACAAACA  
ACAGTTGCAGTTACTGAAAGAACGGTTCAGGCCCTTCTCAATGGGAAACCCAAATTGTAGCTGACGAA  
GCATTTTGAACGAGTTCGGAGTTATTATGAGGTTTTCTAAAGAGTGACCGAGTGCCAGAATGGTAC  
AGAGTGGAGGGTGTCTGCTAATGACTTCAGAGAAGTATTTAAGAAAAACATAGAAAAACGTGTGCGGAG  
TTTGCCAGAAATAGATGGCTTGAGCAAAGACAGTGTGAGCTCATGGATAGCCAAATATGATGCCATT  
TACAGAGGTGAAGAGGACTTGTGCAAACAGCCAAATAGAATGGCCCTAAGTGCAGTGTCTGAACTTATTC  
TGAGCAAGGAACAACTCTATGAAATGTTTCAGCAGATTCTGGGTATTAATAAACTGGAACACCAGCTCCT  
TTATAATGCATGTCAGCTGGATAACGCAGATGAACAAGCAGCCCAGATCAGAAGGGAAGTGTGAGGAGTA  
TGCAATTGGCAGATAAAATGGCAAAGGAAAGAAAATCCCAAATTTATAGCAAAGATATGGAGAATA  
TGTATATAGAAGAGTTGGGCTTTCAGTGAATTTGCTAATGGCCAATTTGGAAAGTCTTCCAGTTTCGAA  
AGGTGGTCCGGAATTTAATTACAAAAATTAACGTTTACAGAACTCTGCATTTTTGGACATAGGAGAT  
GAGAATGAGATTCAGCTGTCAAAGTCCGACGTGGTACTGTCACTCACCTTAGAGATTGTCATAATGGAAG  
TGCAAGGCCTGAAGTCAAGTTCCTCCCAATCGAATGTTTACTGTACAATGGAAGTGAAGGAGAAAAACT  
TCAGACAGACCAGGCCGAAGCCTCAAGGCCACAATGGGGACTCAAGGAGATTTACCACCACCCATCCT  
CGGCCTGTGGTCAAAGTGAAGTCTTACAGAAAGCACTGGAGTCTGGCCCTGGAAGATAAAGAAGTGG  
GAAGGGTGAATTTATACCAACTTCTAATAGCTCAAATCAGCTGAATTACCCGAATGGTAGTTCCAAA  
AAATAGCCAGGATTCTGACTTAAAAATCAAAGTGGCAGTGGCAATGGATAAACCAGCACATGAAGCAT



[View online »](#)

AGTGGATATCTGTATGCCCTTGGACAGAAGGTTTGGAAAAGATGGAAAAACGTTACTTTGTTCTAGTTC  
AGGTTAGCCAATATACCTTTGCTATGTGCAGTTATAGAGAAAAGAAGTCTGAACCACAAGAATTAATGCA  
GCTTGAAGGCTATACTGTGGATTATACCGATCCCACCCAGGCCTTCAGGGTGGTTGTATGTTCTTTAAT  
GCTGTTAAAGAAGGAGATACTGTAACTTTGCCAGTGATGATGAACAGGACAGAATATTATGGGTTCAAG  
CCATGTATAGGGCCACAGGTCAATCATATAAACAGTTCCTGCAATCAAACCCAGAACTGAATCCTAA  
AGGAGGAACTCTCCATGCAGATGCTCAGCTTTCTGGTAAAGATGCAGATCGTTTTTCAGAAACATGGTATG  
GATGAGTTTATTTCTGCAAACCCCTGCAAGCTTGATCATGCCTTCTTTTTAGAATACTCCAGAGGCAGA  
CTTTGGATCACAGACTGAATGATTCTTCTTGGCTTGGGATGGTTTAGCCCTGGCCAAGTCTTTGTGTT  
AGATGAGTACTGTGCCCTTATGGTGTGAGAGGCTGTCACAGACATCTCTGCTACCTTGCAAACTGATG  
GAACATTCAGAAAATGGTGTGCTGTCATTGACCTACCCTGCTCCATTACAGCTTTGCATTCTGTGCCTCTC  
ATGTGCACGGCAACAGGCCTGATGGAATTGGGACTGTTTCAGTGGAGAAAAAGAAAGTTTGAGGAGAT  
AAAAGAGAGACTCTTCCCTTTAGAAAATCAGATAAGCCATTTAGATACTGTTTTCCCTTTGGACGA  
CCTGAAGTGTCTAAAAGCTACACTTTCATTACTTGAAGGGTTTTAATGAAAGATATTGCCACTCCCA  
TACCAGCAGAAGAGGTGAAGAAAGTGGTCAGAAAATGTCTCGAGAAAGCTGCCTTGATCAATTACACTAG  
ACTCACAGAATATGCCAAAATAGAAGAGACCATGAACCAGGCATCTCCTGCTAGAAAGCTGGAAGAGATT  
CTTCATCTGGCAGAGCTCTGCATAGAAGCTTACAGCAGAATGAAGAGCATCATGCAGAGGGAAGAGAGG  
CATTTGCCTGGTGGCCTGATTTATTGGCTGAACATGCAGAGAAAATTTGGGCTTTATTTACAGTGGATAT  
GGCACTGCCTAGAGGCTCAACCGCAAGACTCCTGGGATAGTTTTCTCTTTTCCAAGTCTTAATAAT  
TTCTCCGAAATGACACACTTTTGTGTAATGGAAAATTTCAAAACACTTGCAAGAAATCTTTGTACCTT  
TGGTTGTCCGCTATGTGGATCTCATGGAGTCTCCATCGCCAGTCAATTCACAGAGTTTTGAGCAGGA  
GACATGGCAGCCTGTCAAGAATATCGCCAACAGTCTTCCCAATGTAGCTTCCAAAAGTTCCAAGTCTG  
CCTCTTAATCTTCCACAGATTCTAACATTTCTACTGCTTCGTGGATGCCTTCTTTATATGAGTCCACCA  
ATGGCTCAGCAACATCAGAAGACCTTTTTTGGAACTTGATGCCTGCAAAATGTTTGTCTTTGATCTGCA  
CTGGCCAGAACAGGAATTTGCCACCCTTAGAGCAAAGACTTAACTAATGGCCAGTGATATGCTAGAG  
GCCTGTGTCAAAAAGAACAAAGACTGCAATTTGAACTCAAGCTACAAAAGGCAAGCAAAAACACTGACTTGC  
GCATTCAGCTTCCGTTTGCCTATGTTAATGTATTAGTCGATGCCAAAAGCAAGCACCAAAACCTCTG  
TGCCCTGGATGGAGGACAAGAGCAACAGTACCATTCAAAAATAGATGATCTGATCGACAACAGTGTAAAA  
GAAATCATTTCACTGTTAGTTTCAAAGTTTGTTCAGTGTGGAAGGCGTGTGTCTAAGCTGTCAAGGT  
ATGATGAAGGCACTTTCTTTTCCATCTGTCACTTCACTGTGAAAGCAGCTGCAAAATATGTTGATGT  
TCCAAAACCAGGAATGGATCTGGCAGACACCTATATTATGTTTGTTCGGCAAAACCAAGATATTCTCGA  
GAAAAGGTCAATGAGGAAATGTATAGAAAAGTTATTTGATCAATGGTACAGCAGTTCCATGAAAGTCA  
TTTGCCTGTGGTTGACTGATAGATTAGACCTCCAACCTCATATTTACCAGCTGAAGACGCTCATCAAGAT  
TGTGAAGAAAACCTACAGGGACTTTGATTGCAGGGTGTGTTGGAAGGAACACTGAACAGTAAGACTTAT  
GATACTGTGCACAGACGTTTAAACAGTAGAGGAGGCCACAGCCTCTGTTTCAGAAGGAGGAGGACTTCAGG  
GCATTACTATGAAAGACAGTGACGAAGAAGAAGAGGC

ACGCGTACGCGGCCGCTCGAGCAGAACTCATCTCAGAAGAGGATCTGGCAGCAATGATATCCTGGATT  
ACAAGGATGACGACGATAAGGTTTAA

**Protein Sequence:** >RC216560 representing NM\_017954  
 Red=Cloning site Green=Tags(s)

```

MLDPSSEEEESDEGLEEEESRDVLAAGSSQRAPPAPTREGRRDAPGRAGGGGAARSVSPSPSVLSEGRDE
PQRQLDDEQERRIRLQLYVFFVRCIAYPFNAKQPTDMARRQQLNKOQLQLLKERFQAFNLGETQIWADE
AFCNAVRSYYEVFLKSDRVARMVQSGGCSANDFREVFKKKIEKRVRSLEIDGLSKETVLSWIAKYDAI
YRGEEDLCKQPNRMLSAVSELILSKEQLYEMFQQILGIIKLEHQLLYNACQLDNAEQAAQIRRELDGR
LQLADKMAKERKFPKFIKMDMENMYIEELRSSVNLNMANLESLPVSKGGPEFKLQKLKRSQNSAFLDIGD
ENEIQLSKSDVVLSTLEIVIMEVQGLKSVAPNRIVYCTMEVEGEKLQTDQAEASRPQWGTQGDFTTTHP
RPVVKVKLFTTESTGVLALADKELGRVILYPTSNSKSAELHRMVVPKNSQSDLKIKLAVRMDKPAHMKH
SGLYALGQKQVWKRWKRYFVLVQVSQYTFAMCSYREKKSEPQELMQLGYTVDYDTPHPGLQGGCMFFN
AVKEGDTVIFASDDEQDRILWVQAMYRATGQSYKPVPAIQTKLNPKGGLHADAQLSGKDADRQKHGM
DEFISANPCKLDHAFRLRQRTLDHRLNDSYSLGWFSFGQVFLDEYCARYGVRGCHRHLCYLAELM
EHSNGAVIDPTLLHYSFAFCASHVHGSRPDGIGTVSVEEKERFEEIKERLSSLLENQISHFRYCFPFGR
PEGALKATLSLLERVLKMDIATPIPAEEVKKVVRKCLEKAALINRYTRLTEYAKIEETMNQASPAKLEEI
LHLAELCIEVLQQNEEHHAEGREAFWPPDLLAEHAKEFWALFTVDMDTALEAQDSDWDFPLFQLLNN
FLRNDTLLCNGKFHKLQEIFVPLVVRVYVDMESSIAQSIHRGFEQETWQPVKNIANSLPNVALPKVPSL
PLNLPQIPNISTASWMPPLYESTNGSATSEDLFWKLDALQMFVFDLHWPEQEFQAHHLEQRLKLMASDMLE
ACVKRTRTAFELKQKASKTTDLRIPASVCTMFNVLDVAKKQSTKLCALDGGQEQYHYSKIDDLIDNSVK
EIIISLLVSKFVSVLEGLSKLSRYDEGTFSSILSFTVKAALKYVDVPPKPGMDLADTYIMFVRQNQDILR
EKVNEEMYIEKLFQWYSSSMKVICVWLTDRLDLQLHIYQLKTLIKIVKKTYRDFRLQGVLEGLNSKTY
DTVHRRLTVEEATASVSEGGGLQGITMKDSDEEEEG
  
```

TRTRPLEQKLISEEDLAANDILDYKDDDDKV

**Chromatograms:** [https://cdn.origene.com/chromatograms/mk8016\\_g01.zip](https://cdn.origene.com/chromatograms/mk8016_g01.zip)

**Restriction Sites:** SgfI-MluI

**Cloning Scheme:**

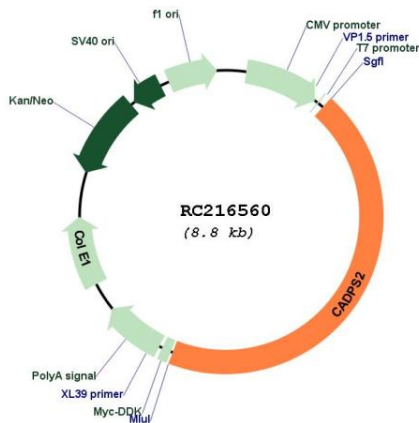


**ACCN:** NM\_017954

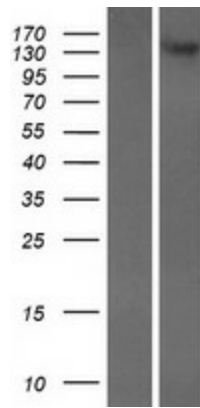
**ORF Size:** 3888 bp

|                               |   |
|-------------------------------|---|
| <b>OTI Disclaimer:</b>        | The molecular sequence of this clone aligns with the gene accession number as a point of reference only. However, individual transcript sequences of the same gene can differ through naturally occurring variations (e.g. polymorphisms), each with its own valid existence. This clone is substantially in agreement with the reference, but a complete review of all prevailing variants is recommended prior to use. <a href="#">More info</a>  |
| <b>OTI Annotation:</b>        | This clone was engineered to express the complete ORF with an expression tag. Expression varies depending on the nature of the gene.  |
| <b>Components:</b>            | The ORF clone is ion-exchange column purified and shipped in a 2D barcoded Matrix tube containing 10ug of transfection-ready, dried plasmid DNA (reconstitute with 100 ul of water).  |
| <b>Reconstitution Method:</b> | <ol style="list-style-type: none"><li>1. Centrifuge at 5,000xg for 5min.</li><li>2. Carefully open the tube and add 100ul of sterile water to dissolve the DNA.</li><li>3. Close the tube and incubate for 10 minutes at room temperature.</li><li>4. Briefly vortex the tube and then do a quick spin (less than 5000xg) to concentrate the liquid at the bottom.</li><li>5. Store the suspended plasmid at -20°C. The DNA is stable for at least one year from date of shipping when stored at -20°C.</li></ol> |
| <b>RefSeq:</b>                | <a href="#">NM_017954.9</a> , <a href="#">NP_060424.9</a>   |
| <b>RefSeq Size:</b>           | 5815 bp   |
| <b>RefSeq ORF:</b>            | 3891 bp   |
| <b>Locus ID:</b>              | 93664   |
| <b>UniProt ID:</b>            | <a href="#">Q86UW7</a>  |
| <b>Cytogenetics:</b>          | 7q31.32   |
| <b>Domains:</b>               | PH  |
| <b>MW:</b>                    | 147.6 kDa   |
| <b>Gene Summary:</b>          | This gene encodes a member of the calcium-dependent activator of secretion (CAPS) protein family, which are calcium binding proteins that regulate the exocytosis of synaptic and dense-core vesicles in neurons and neuroendocrine cells. Mutations in this gene may contribute to autism susceptibility. Multiple transcript variants encoding different isoforms have been found for this gene. [provided by RefSeq, Nov 2009]   |

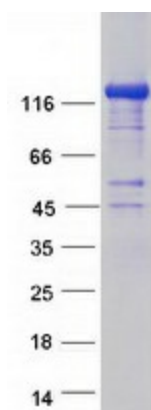
Product images:



Circular map for RC216560



Western blot validation of overexpression lysate (Cat# [LY413414]) using anti-DDK antibody (Cat# [TA50011-100]). Left: Cell lysates from untransfected HEK293T cells; Right: Cell lysates from HEK293T cells transfected with RC216560 using transfection reagent MegaTran 2.0 (Cat# [TT210002]).



Coomassie blue staining of purified CADPS2 protein (Cat# [TP316560]). The protein was produced from HEK293T cells transfected with CADPS2 cDNA clone (Cat# RC216560) using MegaTran 2.0 (Cat# [TT210002]).