

Product datasheet for **RC216558**

GCSF Receptor (CSF3R) (NM_156039) Human Tagged ORF Clone

Product data:

Product Type:	Expression Plasmids
Product Name:	GCSF Receptor (CSF3R) (NM_156039) Human Tagged ORF Clone
Tag:	Myc-DDK
Symbol:	GCSF Receptor
Synonyms:	CD114; GCSFR; SCN7
Mammalian Cell Selection:	Neomycin
Vector:	pCMV6-Entry (PS100001)
E. coli Selection:	Kanamycin (25 ug/mL)



[View online »](#)

ORF Nucleotide Sequence:

>RC216558 representing NM_156039
 Red=Cloning site Blue=ORF Green=Tags(s)

TTTTGTAATACGACTCACTATAGGGCGGCCGGGAATTCGTCGACTGGATCCGGTACCGAGGAGATCTGCC
 GCC**GCGATCGCC**

ATGGCAAGGCTGGAAACTGCAGCCTGACTTGGGCTGCCCTGATCATCCTGCTGCTCCCGGAAGTCTGG
 AGGAGTGCGGGCACATCAGTGTCTCAGCCCCATCGTCCACCTGGGGGATCCCATCACAGCCTCCTGCAT
 CATCAAGCAGAAGTGCAGCCATCTGGACCCGGAGCCACAGATTCTGTGGAGACTGGGAGCAGAGCTTCAG
 CCCGGGGCAGGCAGCAGCGTCTGTCTGATGGGACCCAGGAATCTATCATCACCTGCCCCACCTCAACC
 ACACTCAGGCCTTCTCTCCTGCTGCCTGAACTGGGGCAACAGCCTGCAGATCCTGGACCAGGTTGAGCT
 GCGCGCAGGCTACCTCCAGCCATACCCACAACCTCTCCTGCCTCATGAACTCACAACCAGCAGCCTC
 ATCTGCCAGTGGGAGCCAGGACCTGAGACCCACCTACCCACCAGCTTCACTCTGAAGAGTTCAAGAGCC
 GGGGCAACTGTCAGACCAAGGGGACTCCATCCTGGACTGCGTGCCCAAGGACGGGCAGAGCCACTGCTG
 CATCCCACGAAACACCTGCTGTTGTACCAGAATATGGGCATCTGGGTGCAGGCAGAGAATGCGCTGGGG
 ACCAGCATGTCCCACAACCTGTGCTTGTATCCCATGGATGTTGTGAACTGGAGCCCCCATGCTGCGGA
 CCATGGACCCAGCCCTGAAGCGGCCCTCCCCAGGCAGGCTGCCTACAGCTGTGCTGGGAGCCATGGCA
 GCCAGGCTGCACATAAATCAGAAGTGTGAGCTGCGCCACAAGCCGACGCGTGGAGAAGCCAGCTGGGCA
 CTGGTGGGCCCCCTCCCCTGGAGGCCCTTCAATGAGCTCTGCGGGCTCCTCCAGCCACGGCCTACA
 CCCTGCAGATACGCTGCATCCGCTGGCCCTGCCTGGCCACTGGAGCGACTGGAGCCCCAGCCTGGAGCT
 GAGAACTACGAACGGGCCCCACTGTGAGACTGGACACATGGTGGCGGCAGAGGCAGCTGGACCCAGG
 ACAGTGCAGCTGTTCTGGAAGCCAGTGCCTGGAGGAAGACAGCGGACGGATCCAAGGTTATGTGGTTT
 CTTGGAGACCTCAGGCCAGGCTGGGGCCATCCTGCCCTTGCACACCACAGAGCTCAGCTGCACCTT
 CCACCTGCCTTCAGAAGCCAGGAGGTGGCCCTTGTGGCCTATAACTCAGCCGGGACCTCTCGTCCCACC
 CCGGTGGTCTTCTCAGAAAGCAGAGGCCAGCTCTGACCAGACTCCATGCCATGGCCGAGACCCTCACA
 GCCTCTGGGTAGGCTGGGAGCCCCCAATCCATGGCCTCAGGGCTATGTGATTGAGTGGGCGCTGGGCC
 CCCCAGCGCAGCAATAGCAACAAGACCTGGAGGATGGAACAGAATGGGAGAGCCACGGGTTTCTGCTG
 AAGGAGAACATCAGGCCCTTTCAGCTCTATGAGATCATCGTGACTCCCTTGTACCAGGACACCATGGGAC
 CCTCCAGCATGTCTATGCCTACTCTCAAGAAATGGCTCCCTCCCATGCCCCAGAGCTGCATCTAAAGCA
 CATTGGCAAGACCTGGGCACAGCTGGAGTGGTGCCTGAGCCCCCTGAGCTGGGAAGAGCCCCCTTACC
 CACTACACCATCTTCTGGACCAACGCTCAGAACCAGTCTTCTCCGCCATCCTGAATGCCTCCTCCCGTG
 GCTTTGTCTCCATGGCCTGGAGCCCGCAGTCTGTATACATCCACCTCATGGCTGCCAGCCAGGCTGG
 GGCCACCAACAGTACAGTCTCACCTGATGACCTTGACCCAGAGGGGTGCGGAGCTACACATCATCCTG
 GGCTGTTGCGCCTCCTGCTGTTGCTCACCTGCCTCTGTGGAAGTGCCTGGCTCTGTTGCAGCCCCAACA
 GGAAGAAATCCCCTCTGGCCAAGTGTCCCAGACCCAGCTCACAGCAGCCTGGGCTCCTGGGTGCCCAAT
 CATGGAGGAGGATGCCTTCCAGCTGCCCGGCTTGGCACGCCACCCATCACCAAGCTCACAGTGTGGAG
 GAGGATGAAAAGAAGCCGGTGCCTGGGAGTCCCATAACAGCTCAGAGACCTGTGGCCTCCCACCTCTGG
 TCCAGACCTATGTGCTCCAGGGGACCCAAGAGCAGTTTCCACCCAGCCCCAATCCCAGTCTGGCACCAG
 CGATCAGGTCCTTATGGGCAGCTGCTGGGCAGCCCCACAAGCCAGGGCCAGGGCACTATCTCCACTGT
 GACTCCACTCAGCCCCTTGGCGGCCTCACCCCAGCCCCAAGTCTATGAGAACCTCTGGTTCCAGG
 CCAGCCCCCTGGGACCCCTGGTAACCCCAGCCCCAAGCCAGGAGGACGACTGTGTCTTGGGCCACTGCT
 CAACTCCCCCTCCTGCAGGGGATCCGGGTCCATGGGATGGAGGCGCTGGGGAGCTTC

ACGCGTACGCGGCCGCTCGAGCAGAAACTCATCTCAGAAGAGGATCTGGCAGCAATGATATCCTGGATT
 ACAAGGATGACGACGATAAGGTTTAA

Protein Sequence: >RC216558 representing NM_156039
Red=Cloning site Green=Tags(s)

MARLGNCSLTWAALIILLPGSLEECGHISVSAPIVHLGDPITASCIKQNCSHLDPEPQILWRLGAELQ
PGGRQQRLSDGTQESIITLPHLNHTQAFLLSCCLNWGNSLQILDQVELRAGYPPAIPHNLSCLMNLTSSSL
ICQWEPGPETHLPTSFTLKSFKSRGNCQTQGDSILDCVPKDGQSHCCIPRKHLLLYQNMGIWVQAENALG
TSMSPQLCLDPM DVV KLEPPMLRTMDPSPEAAPQAGCLQLCWEPWQPGLHINQKCELRHKPQRGEASWA
LVGPLPLEALQYELCGLLPATAYTLQIRCIRWPLPGHWSWSPSLELRTERAPT VRLDTWWRQRQLDPR
TVQLFWKPVPLEEDSGRIQGYVVSWRPSGQAGAILPLCNTTEL SCTFHLPSEAQEV ALVAYNSAGTSRPT
PVVFSERGPALTRLHAMARDPHSLWVGWEPNPWPQGYVIEWGLGPPSASNSNKTWRMEQNGRATGFL
KENIRPFQLYEIIVTPL YQDTMGPSQHVYAYSQEMAPSHAPELHLKHIGKTWAQLEWVPEPPEL GKSP
LTYTIFWTNAQNQSFSAILNASSRGFVLHGLEPASLYHIHLMAASQAGATNSTVL TLMTLTPEGSELH
ILGLFGLLLLLTCLCGTAWLCCSPNRKNPLWPSVDP AHSSLGSWVPTIMEEDAFQLPGLGTPPITKLTV
LE EDEK KPVWESHNSSETCGLPTLVQTYVLQGDPRAVSTQPQSQSGTSDQVLYGQLLGSPTSPGPGHYL
HC DSTQPLL AGLTPSPKSYENLWFQASPLGLVTPAPSQEDDCVFGPLLNFPLLQGIRVHGMEALGSF

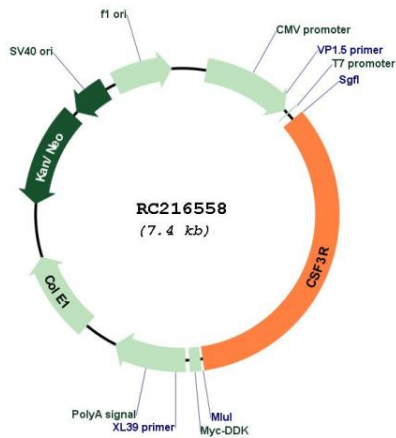
TRTRPLEQKLI SEEDLAANDILDYKDDDDKV

Chromatograms: https://cdn.origene.com/chromatograms/mk6163_c01.zip

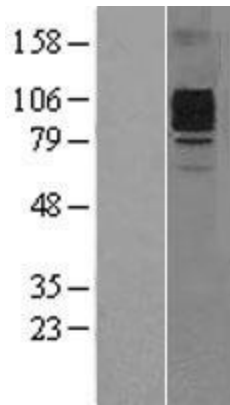
Restriction Sites: Sgfl-Mlul

Reconstitution Method:	<ol style="list-style-type: none">1. Centrifuge at 5,000xg for 5min.2. Carefully open the tube and add 100ul of sterile water to dissolve the DNA.3. Close the tube and incubate for 10 minutes at room temperature.4. Briefly vortex the tube and then do a quick spin (less than 5000xg) to concentrate the liquid at the bottom.5. Store the suspended plasmid at -20°C. The DNA is stable for at least one year from date of shipping when stored at -20°C.
Note:	Plasmids are not sterile. For experiments where strict sterility is required, filtration with 0.22um filter is required.
RefSeq Size:	3084 bp
RefSeq ORF:	2592 bp
Locus ID:	1441
UniProt ID:	Q99062
Cytogenetics:	1p34.3
Protein Families:	Druggable Genome, ES Cell Differentiation/IPS, Secreted Protein, Transmembrane
Protein Pathways:	Cytokine-cytokine receptor interaction, Hematopoietic cell lineage, Jak-STAT signaling pathway, Pathways in cancer
MW:	92.5 kDa
Gene Summary:	The protein encoded by this gene is the receptor for colony stimulating factor 3, a cytokine that controls the production, differentiation, and function of granulocytes. The encoded protein, which is a member of the family of cytokine receptors, may also function in some cell surface adhesion or recognition processes. Alternatively spliced transcript variants have been described. Mutations in this gene are a cause of Kostmann syndrome, also known as severe congenital neutropenia. [provided by RefSeq, Aug 2010]

Product images:



Circular map for RC216558



Western blot validation of overexpression lysate (Cat# [LY403523]) using anti-DDK antibody (Cat# [TA50011-100]). Left: Cell lysates from untransfected HEK293T cells; Right: Cell lysates from HEK293T cells transfected with RC216558 using transfection reagent MegaTran 2.0 (Cat# [TT210002]).