

## Product datasheet for RC216555

### Kallikrein 12 (KLK12) (NM\_145894) Human Tagged ORF Clone

#### Product data:

Product Type:	Expression Plasmids
Product Name:	Kallikrein 12 (KLK12) (NM_145894) Human Tagged ORF Clone
Tag:	Myc-DDK
Symbol:	Kallikrein 12
Synonyms:	KLK-L5; KLKL5
Mammalian Cell Selection:	Neomycin
Vector:	pCMV6-Entry (PS100001)
E. coli Selection:	Kanamycin (25 ug/mL)
ORF Nucleotide Sequence:	>RC216555 representing NM_145894 Red=Cloning site Blue=ORF Green=Tags(s)

TTTTGTAATACGACTCACTATAGGGCGCCGGAATTCGTCGACTGGATCCGGTACCGAGGAGATCTGCC  
GCC**CGATCGCC**

ATGGGGCTCAGCATCTTTTTGCTCCTGTGTCTTGGGCTCAGCCAGGCAGCCACACCGAAGATTTTCA  
ATGGCACTGAGTGTGGGCGTAACACAGCCGTGGCAGGTGGGGCTGTTGAGGGCACCAGCCTGCGCTG  
CGGGGGTGTCTTATTGACCACAGGTGGTCTCACAGCGGCTCACTGCAGCGGCAGCAGGTACTGGGTG  
CGCCTGGGGAAACACAGCCTCAGCCAGCTCGACTGGACCGAGCAGATCCGGCACAGCGGCTTCTCTGTGA  
CCCATCCCGGCTACCTGGGAGCCTCGACGAGCCACGAGCAGACCTCCGGCTGCTGCGGCTGCGCCTGCC  
CGTCCGGTAACACAGCAGGTTCAACCCCTGCCCTGCCCAATGACTGTGCAACCGCTGGCACCGAGTGC  
CAGTCTCAGGCTGGGGATCACCAACCCACGGAACCCATCCCGGATCTGTCCAGTGCCCAACC  
TCTCCATCGTCTCCATGCCACCTGCCATGGTGTGTATCCCGGGAATCACGAGCAACATGGTGTGTGC  
AGGCGGCTCCCGGGCAGGATGCCTGCCAGGGTATTCTGGGGCCCCCTGGTGTGTGGGGGAGTCCCT  
CAAGGTCTGGTCTCTGGGGTCTGTGGGGCCCTGTGGACAAGATGGCATCCCTGGAGTCTACACCTATA  
TTTGAAGTATGTGGACTGGATCCGGATGATCATGAGGAACAAC

**ACGCGT**ACGCGGCCGCTCGAGCAGAACTCATCTCAGAAGAGGATCTGGCAGCAAATGATATCCTGGATT  
ACAAGGATGACGACGATAAGGTTTAA



[View online »](#)

**Protein Sequence:** >RC216555 representing NM\_145894  
Red=Cloning site Green=Tags(s)

MGLSIFLLLCVLGLSQAATPKIFNGTECGRNSQPWQVGLFEGTSLRCGGVLIDHRWVLTAAHCSGSRYWV  
 RLGEHLSQLDWTEQIRHSGFSVTHPGYLGASTSHEHDLRLRLPVRVTSSVQPLPLPNDCATAGTEC  
 HVSGWGITNHPNPFDPDLLQCLNLSIVSHATCHGVYPGRITSNMVCAGGVPQDACQGDSSGGLVCGGVV  
 QGLVSWGSGVPCGQDGIPIGVYTYICKYVDWIRMIMRNN

TRTRPLEQKLISEEDLAANDILDYKDDDDKV

**Chromatograms:** [https://cdn.origene.com/chromatograms/mg3750\\_g12.zip](https://cdn.origene.com/chromatograms/mg3750_g12.zip)

**Restriction Sites:** SgfI-MluI

**Cloning Scheme:**

Cloning sites used for ORF Shuttling:



\* The last codon before the Stop codon of the ORF

**ACCN:** NM\_145894

**ORF Size:** 744 bp

**OTI Disclaimer:** The molecular sequence of this clone aligns with the gene accession number as a point of reference only. However, individual transcript sequences of the same gene can differ through naturally occurring variations (e.g. polymorphisms), each with its own valid existence. This clone is substantially in agreement with the reference, but a complete review of all prevailing variants is recommended prior to use. [More info](#)

**OTI Annotation:** This clone was engineered to express the complete ORF with an expression tag. Expression varies depending on the nature of the gene.

**Components:** The ORF clone is ion-exchange column purified and shipped in a 2D barcoded Matrix tube containing 10ug of transfection-ready, dried plasmid DNA (reconstitute with 100 ul of water).

**Reconstitution Method:**

1. Centrifuge at 5,000xg for 5min.
2. Carefully open the tube and add 100ul of sterile water to dissolve the DNA.
3. Close the tube and incubate for 10 minutes at room temperature.
4. Briefly vortex the tube and then do a quick spin (less than 5000xg) to concentrate the liquid at the bottom.
5. Store the suspended plasmid at -20°C. The DNA is stable for at least one year from date of shipping when stored at -20°C.

**Note:** Plasmids are not sterile. For experiments where strict sterility is required, filtration with 0.22um filter is required.

**RefSeq:** [NM\\_145894.2](#)

**RefSeq Size:** 1074 bp

**RefSeq ORF:** 747 bp

**Locus ID:** 43849

**UniProt ID:** [Q9UKR0](#)

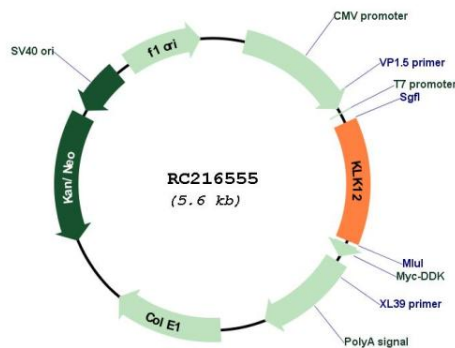
**Cytogenetics:** 19q13.41

**Protein Families:** Druggable Genome, Protease, Secreted Protein

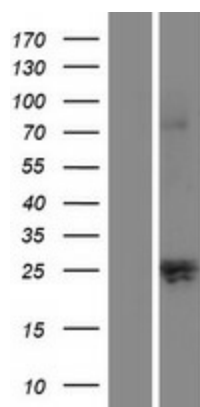
**MW:** 26.6 kDa

**Gene Summary:** Kallikreins are a subgroup of serine proteases having diverse physiological functions. Growing evidence suggests that many kallikreins are implicated in carcinogenesis and some have potential as novel cancer and other disease biomarkers. This gene is one of the fifteen kallikrein subfamily members located in a cluster on chromosome 19. Alternate splicing of this gene results in three transcript variants encoding different isoforms. [provided by RefSeq, Jul 2008]

### Product images:



Circular map for RC216555



Western blot validation of overexpression lysate (Cat# [LY407832]) using anti-DDK antibody (Cat# [TA50011-100]). Left: Cell lysates from untransfected HEK293T cells; Right: Cell lysates from HEK293T cells transfected with RC216555 using transfection reagent MegaTran 2.0 (Cat# [TT210002]).