

## Product datasheet for RC216544

### NEDL2 (HECW2) (NM\_020760) Human Tagged ORF Clone

#### Product data:

Product Type:	Expression Plasmids
Product Name:	NEDL2 (HECW2) (NM_020760) Human Tagged ORF Clone
Tag:	Myc-DDK
Symbol:	NEDL2
Synonyms:	NDHSAL; NEDL2
Mammalian Cell Selection:	Neomycin
Vector:	pCMV6-Entry (PS100001)
E. coli Selection:	Kanamycin (25 ug/mL)
ORF Nucleotide Sequence:	>RC216544 representing NM_020760 Red=Cloning site Blue=ORF Green=Tags(s)

TTTTGTAATACGACTCACTATAGGGCGGCCGGAATTCGTCGACTGGATCCGGTACCGAGGAGATCTGCC  
GCC**CGATCGCC**

ATGGCTAGTTCAGCCCGGGAGCACCTGCTTTTTGTGAGGCGTCGAAATCCCCAGATGCGGTACACATTGA  
GCCAGAGAACCTCCAGAGCCTTCCCGCCAGAGCTCCATGCCAGAGAACATGACCCTGCAGCGGGCCAA  
CAGCGACACCGACCTGGTACTTCTGAGAGCCGCTCCAGCTTAACTGCCAGCATGTACGAGTACACGCTG  
GGCAAGCCAGAACCTCATTATCTTCTGGACATTAAGAGGAGGTGGACCCAGTGATTGGATTGGAC  
TTTATCATATAGATGAGAATTCTCCAGCCAACCTCTGGGATTCTAAGAACAGGGGTGACTGGAACACA  
AAAAGGGCAAATTGTATGGAGAATTGAGCCTGGACCCTATTTTCATGGAACCGGAGATAAAAACTGTTTT  
AAATATTACCACGGCATTAGTGGAGCCCTGCGAGCCACGACCCCTGCATCACCGTGAAGAACCCAGCTG  
TGATGATGGGGCAGAAGGCATGGAGGGAGGTGCTTCAGGAAACCTGCATTCTCGAAAACCTGTTAGCTT  
TACATTGTCAGATCTTAGGGCAGTTGGGCTAAAGAAAGGGATGTTCTTCAATCCTGACCCTTATCTTAAG  
ATGTCAATTCAGCCAGGAAAGAAGAGCAGTTTCCCACCTGTGCCACCACGGGCAGGAGAGACGGTCTA  
CTATCATCAGTAACACCACCAATCCAATTTGGCACCGAGAGAAATATTCCTTTTTGCACTTCTTACTGA  
TGCTTTAGAAATTGAAATTAAGACAAATTTGCCAAGAGCCGTCATCATCAAGCGTTTTCTGGGGAAA  
CTAACCTCCAGTCCAGAGGCTGCTGGAGCGACAAGCCATCGGTGATCAAATGCTCAGCTACAACCTTG  
GCAGAAGGCTCCCAGCTGACCAGTGAGTGGTACCTCCAGTTTAAAGTGGAGGTTACGTCTTCTGTTCA  
TGAAGATGCCTCTCCAGAAGCTGTTGGCACAATACTTGGAGTCAATTCGTGAATGGAGACTTAGGTAGC  
CCTTCCGATGACGAGGACATGCCAGGGAGCCATCACGACAGCCAGGTGTGCTCTAATGGGCCAGTTTCTG  
AGGACAGTGTGCCGATGGAACCCCAAGCATTTCATTGAGGACTAGTCCACTCTGGAAATAGACACAGA  
GGAATTAACCTCTACGTCTTCAAGGACCTCACCTCCCAGAGGACGTCAGGATTCACTCAATGATTACTTA  
GATGCTATCGAACACAATGGCCACTCCAGGCCAGGACAGCGACCTGCTCTGAGAGGTCCATGGGTGCCT  
CTCCGAAACTGAGGAGTAGTTTTCCCACTGACACAAGACTCAATGCCATGCTTCATATTGATTGAGATGA  
AGAAGATCACGAGTTCAGCAAGACCTGGGTTACCCATCTTCTTGGAGGAGGAGGGAGGCTGATCATG



[View online »](#)

TTTAGCAGGGCATCCAGAGCTGATGATGGAAGCCTGACATCTCAGACAAAGCTGGAGGACAACCCCTGTTG  
AGAATGAGGAAGCCTCCACACACGAAGCTGCTTCTTTGAGGATAAGCCAGAAAACTTCCAGAGCTTGC  
AGAGAGCTCCTTACCTGCAGGCCAGCCCCAGAGGAAGGTGAAGGCGGCCAGAGCCTCAACCCAGTGCT  
GACCAGGGCAGTGCTGAACTGTGTGGCTCTCAAGAGGTAGATCAGCCACAAGTGGCGCAGACACAGGGA  
CTTCCGATGCATCAGGAGGAAGCCGAAGAGCCGTCAGTGAGACCGAGTCTCTCGATCAGGGCTCTGAGCC  
TTCCCAGGTGTCTCTGAAACAGAACCAGTGATCCTGCCAGGACAGAGAGTGTGAGCGAAGCCAGCACC  
AGGCCTGAGGAGAGAGTGACCTGGAATGCGCTGACAGTCTTCAATGAGAGTGTGACCACGCAGCTGT  
CCTCTGTGGACACCGGTGCTCCTCTTTGAGAGCGCACGGTTTCTGAAACCCAGCCTTTTCTTCTCA  
GGAGGAGGAAGACGGAGCCTGTGCAGCAGAGCCACCAGCAGTGGCCCTGCCGAAGGGTTCGAGGAATCC  
GTGTGCACTGCTGGTTCTTTACCTGTGGTACAGGTGCCAGTGGGGAGGATGAAGGGCCAGGGGAGAAAT  
CGGCCACTGTACCTGACCAGGAGGAGCTGGGGAGGTCTGGCAGCGGAGGGGGAGCCTGGAGGGAGCTGC  
AGCTGCTGCCGAGAGCCACCAGCAAGAAGAAGGCAGTGTGGGGAGGCCAAGGCACCTGTGAAGGGGCA  
ACTGCCAGGAGGAGGGCGCTACTGGAGGTTCTCAAGCCAACGGCCACCAGCCACTGCGATCACTACCTT  
CAGTGCGCCAGGATGTTAGCCGGTACCAGAGGGTGGACGAGGCTCTCCACCAAACCTGGGAGGCACGCAT  
TGACAGCCACGGCAGGATCTTCTACGTGGATCACGTAACAGAACCACGAGTGGCAGCGACCCGACAGCT  
CCCCAGCCCCGAGGTGCTGCAGAGATCTAATCCATACAGCAAATGGAGCAGCTGAACCGGCGATATC  
AGAGTATCCGAGAACCATGACCAATGAGAGGCCTGAGGAAAATACCAATGCTATTGATGGGGCAGGGGA  
GGAAGCTGACTTTACCAAGCCAGTGCAGATTTCCGACGGGAGAACATCCTGCCTCACTCTACCTCCAGA  
TCCAGGATCACGTTGCTGTTACAGTCTCCCCCGTGAAGTTTCTCATCAGCCAGAGTCTTCCACCGTGC  
TGCACTTAACCTAGTGCCTACCGCATGTTTACAACAACACGTTTGAAGCAGATGATCACCAGGATGTTT  
CCGGAGGGACACCACCTTTGAACGCTACCAGCATAACCGCGACCTTGTGGGATTCTCAACATGTTT  
TGGACCAACTCCCGCACCACCTTTTATTGATCCCCGGCTCCCACTTCAGAGCAGTAGACCCACAAG  
TGCCTGTGTTTATCGGCAACACCTGACAAGGCAACGCAGCCACAGTGGGGTGGAGTAGGAGAAGATTCT  
CGACATGCAGGACCACGTTTCTCCAGGCCATCCAGTACATTCAATACAGTCACTAGGCCACAGTACC  
AGGACATGGTTCCAGTGGCTTACAATGACAAGATTGTTGCATTTCTACGTCACCCCAATATCTTTGAAAT  
TCTACAGGAGCGTCAACCTGATCTTACCAGGAATCACTCACTCAGGGAGAAGATCCAATTTATCCGAACT  
GAAGGGACTCCAGGATTGGTGCCTTTCAAGCGATGCAGACCTTGTATGTTGCTGAGCTTATTTGAAG  
AAGAGATAATGTCATATGTCCTCCACATGCCTTACTCCACCCAGCTACTGTCACTCCACGTTGGCTC  
TCCCGTGCATCTCCTCAGAACTCGCCAGGTACCAGCGTGCCAAATGCCGGGCTCCAGCCCTTACAAG  
CGGGATTTGCAAGCCAACTGAGGAACTTTTACAGGAAGTTAGAGACTAAAGGATATGGACAAGGCCAG  
GGAAGTTAAAGTTAATTATCCGAAGAGATCACTTACTAGAAGATGCTTTTAAATCAGATTATGGGCTACTC  
CAGAAAAGACCTGCAGAGAAATAAGCTATATGTCACCTTCGTTGGGGAGGAAGGGCTGGATTACAGTGGG  
CCTTCTAGAGAGTTTTTCTTCTGGTATCCAGAGAACTCTTAAACCCATATTATGGCTTATTTGAATATT  
CAGCCAAATGACACATACACAGTACAAAATAAGTCCTATGTCTGCTTTTGTAGACAAACACCATGAATGGTT  
CCGATTCAGTGGTAGGATCCTTGGTCTTGCCTAATACACCAGTATTTGTTGGATGCCTTCTTACACCG  
CCTTTTATAAGGCTCTTCTCAGAATCTATGTGACCTGAGTGACCTAGAATACCTTGATGAAGAGTTCC  
ATCAGAGCCTGCAGTGGATGAAAGACAATGATATCCATGACATCCTAGACCTCACGTTCACTGTGAACGA  
AGAAGTATTTGGCAGATAACTGAACGAGAATTAAGCCAGGGGTGCCAATATCCAGTTACAGAGAAG  
AACAAAGAAGGAGTACATCGAGAGGATGGTGAAGTGGAGGATTGAGAGGGGTGTTGTACAGCAAACAGAGA  
GCTTAGTGCGTGGCTTCTATGAGGTGGTGGATGCCAGGCTGGTATCTGTTTTTGTGCAAGAGAAGTGG  
ATTGGTCAATGCAGGCACAGCTGAAATAGACCTAAGTATTGGAGAAACAACACAGAATATAGAGGAGGA  
TACCATGACAATCATATTGTAATTCGGTGGTCTGGGCTGCAGTGGAAAGATTCAACAATGAACAACGC  
TAAGGTTGTTACAGTTTGTACAGGCACATCCAGCATTCCCTATGAAGGATTTGCTTCACTCCGAGGGAG  
TAACGGCCCAAGAAGATTCTGTGTGGAGAAATGGGGGAAATCACTGCTCTTCCAGAGCGCATACATGT  
TTTAAACCGTCTGGATCTGCCTCCCTACCATCCTTTTCCATGCTTTATGAAAACTGTTGACAGCAGTTG  
AAGAAACCAGTACTTTTGGACTTGAG

ACGCGTACGCGGCCGCTCGAGCAGAACTCATCTCAGAAGAGGATCTGGCAGCAAATGATATCCTGGATT  
ACAAGGATGACGACGATAAGGTTTAA

Protein Sequence: >RC216544 representing NM\_020760  
 Red=Cloning site Green=Tags(s)

MASSAREHLLFVRRRNPQMRYTLSPENLQSLAAQSSMPENMTLQRANSDDLVTSESRSSLTASMYEYTL  
 GQAQNLIIIFWDIKEEVDPSDWIGLYHIDENSPANFWSKNRGVTGTQKQIIVWRIEPPYFMEPEIKICF  
 KYHHGISGALRATTPCITVKNPVMGAEGMEGGASGNLHSRKLVSFTLSDLRAVGLKKGFFNPDPYLK  
 MSIQPGKKSSFPPTCAHHGQERRSTIIISNTNPIWHREKYSFFALLTDVLEIEIKDKFAKSRPIIKRFLGK  
 LTIPVQRLLEQAIGDQMLSYNLGRRLPADHVSGYLQFKVEVTSVHEDASPEAVGTILGVNSVNGDLGS  
 PSDDEDMPGSHHDSQVC SNGPVSEDSAADGTPKHSFRTSSTLEIDTEELTSTSSRTSPPRGRQDSLNDYL  
 DAIEHNGHSRPGTATCSERSMGASPKLRSSFPDTRLNAMLHIDSDEEDHEFQQDLGYSSLEEEGLIM  
 FSRASRADDGSLTSQTKLEDNPVENEEASTHEAASFEDKPENLPELAESSLPAGPAPEEGEGGPEQPSPA  
 DQGSaelCGSQEVDQPTSGADTGTSDASGGRRRAVSETESLDQGSEPSQVSSETEPSPARTE SVSEAST  
 RPEGESDLECADSSCNESVTTQLSSVDTRCSSLESARFPETPAFSSQEEEDGACAAEPTSSGPAEGSQES  
 VCTAGSLPVVQVPSGEDEGPGAESATVPDQEEELGEVWQRRGSLGAAAAAESPPQEEGSAGEAQTCEGA  
 TAQEEGATGGSQANGHQPLRSLPSVRQDVSRYQRVDEALPPNWEARIDSHGRIFYVDHVNRTTTWQRPTA  
 PPAPQVLQRSNSIQMEQLNRRYQSIIRRTMTNERPEENTNAIDGAGEEADFHQASADFRRENILPHSTSR  
 SRITLLLQSPVKFLISPEFFTVLHNSPAYSAMFTNNTCLKHMITKVRDRDTHHFERYQHNRDLVGFLLMF  
 ANKQLELPRGWEMKHDHQGAFFVDHNSRTTTFIDPRLPLQSSRPTSALVHRQHLTRQRSHSAGEVGEDS  
 RHAGPPVLRPSSTFNTVSRPQYQDMVPVAYNDKIVAFLRQPNIFEILQERQPDLTRNHSLEKIQFIRT  
 EGTPGLVRLSSDADLVMLLSLFEIEIMSYPVPHALLHPSYCQSPRGSPVSSPQNSPGTQRANARAPAYK  
 RDFEAKLRNFYRKLETKGYGQGPGLKLIIRRDHLLLEDAFNQIMGYSRKDLQRNKLVTYVGEGLDYSG  
 PSREFFFLVSRELFPYGLFEYSANDTYTVQISPMFAFVDNHHEWFRFSGRILGLALIHQYLLDAFFTR  
 PFYKALLRILCDLSDLEYLDEEFHQSLQWMDNDIHDILDLTFTVNEEVFGQITERELKPGGANIPVTEK  
 NKKEYIERMVKWRIERG VVQTESLVRGFYEVVDARLVSVFDARELELVIAGTAEIDLSDWRNNTTEYRGG  
 YHDNHIVIRFWAAVERFNNEQRLRLQLFVTGTSSIPYEGFASLRG SNGPRRRCVEKWKITALPRAHTC  
 FNRLDLPYPSPF SMLYEKLLTAVEETSTFGLE

TRTRPLEQKLISEEDLAANDILDYKDDDDKV

Chromatograms: [https://cdn.origene.com/chromatograms/mg3951\\_d07.zip](https://cdn.origene.com/chromatograms/mg3951_d07.zip)

Restriction Sites: Sgfl-MluI

Cloning Scheme:



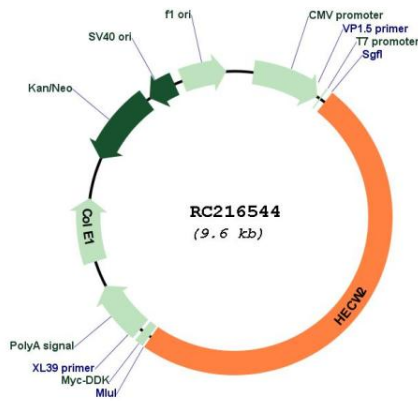
ACCN: NM\_020760

<b>ORF Size:</b>	4716 bp
<b>OTI Disclaimer:</b>	<p>Due to the inherent nature of this plasmid, standard methods to replicate additional amounts of DNA in E. coli are highly likely to result in mutations and/or rearrangements. Therefore, OriGene does not guarantee the capability to replicate this plasmid DNA. Additional amounts of DNA can be purchased from OriGene with batch-specific, full-sequence verification at a reduced cost. Please contact our customer care team at <a href="mailto:custsupport@origene.com">custsupport@origene.com</a> or by calling 301.340.3188 option 3 for pricing and delivery.</p> <p>The molecular sequence of this clone aligns with the gene accession number as a point of reference only. However, individual transcript sequences of the same gene can differ through naturally occurring variations (e.g. polymorphisms), each with its own valid existence. This clone is substantially in agreement with the reference, but a complete review of all prevailing variants is recommended prior to use. <a href="#">More info</a></p>
<b>OTI Annotation:</b>	This clone was engineered to express the complete ORF with an expression tag. Expression varies depending on the nature of the gene.
<b>Components:</b>	The ORF clone is ion-exchange column purified and shipped in a 2D barcoded Matrix tube containing 10ug of transfection-ready, dried plasmid DNA (reconstitute with 100 ul of water).
<b>Reconstitution Method:</b>	<ol style="list-style-type: none"> <li>1. Centrifuge at 5,000xg for 5min.</li> <li>2. Carefully open the tube and add 100ul of sterile water to dissolve the DNA.</li> <li>3. Close the tube and incubate for 10 minutes at room temperature.</li> <li>4. Briefly vortex the tube and then do a quick spin (less than 5000xg) to concentrate the liquid at the bottom.</li> <li>5. Store the suspended plasmid at -20°C. The DNA is stable for at least one year from date of shipping when stored at -20°C.</li> </ol>
<b>Note:</b>	Plasmids are not sterile. For experiments where strict sterility is required, filtration with 0.22um filter is required.
<b>RefSeq:</b>	<a href="#">NM_020760.4</a>
<b>RefSeq Size:</b>	6926 bp
<b>RefSeq ORF:</b>	4719 bp
<b>Locus ID:</b>	57520
<b>UniProt ID:</b>	<a href="#">Q9P2P5</a>
<b>Cytogenetics:</b>	2q32.3
<b>Protein Families:</b>	Druggable Genome
<b>MW:</b>	175.6 kDa

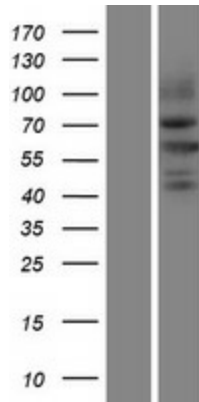
**Gene Summary:**

This gene encodes a member of a family of E3 ubiquitin ligases which plays an important role in the proliferation, migration and differentiation of neural crest cells as a regulator of glial cell line-derived neurotrophic factor (GDNF)/Ret signaling. This gene also plays an important role in angiogenesis through stabilization of endothelial cell-to-cell junctions as a regulator of angiomin-1 stability. The encoded protein contains an N-terminal calcium/lipid-binding (C2) domain involved in membrane targeting, two-four WW domains responsible for cellular localization and substrate recognition, and a C-terminal homologous with E6-associated protein C-terminus (HECT) catalytic domain. Naturally occurring mutations in this gene are associated with neurodevelopmental delay, hypotonia, and epilepsy. The decreased expression of this gene in the aganglionic colon is associated with Hirschsprung's disease. Alternative splicing results in multiple transcript variants. [provided by RefSeq, Feb 2017]

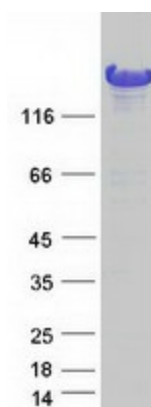
**Product images:**



Circular map for RC216544



Western blot validation of overexpression lysate (Cat# [LY412317]) using anti-DDK antibody (Cat# [TA50011-100]). Left: Cell lysates from untransfected HEK293T cells; Right: Cell lysates from HEK293T cells transfected with RC216544 using transfection reagent MegaTran 2.0 (Cat# [TT210002]).



Coomassie blue staining of purified HECW2 protein (Cat# [TP316544]). The protein was produced from HEK293T cells transfected with HECW2 cDNA clone (Cat# RC216544) using MegaTran 2.0 (Cat# [TT210002]).