

Product datasheet for RC216543

C4orf33 (NM_001099783) Human Tagged ORF Clone

Product data:

Product Type: Expression Plasmids
Product Name: C4orf33 (NM_001099783) Human Tagged ORF Clone
Tag: Myc-DDK
Symbol: C4orf33
Mammalian Cell Selection: Neomycin
Vector: pCMV6-Entry (PS100001)
E. coli Selection: Kanamycin (25 ug/mL)
ORF Nucleotide Sequence: >RC216543 representing NM_001099783
Red=Cloning site Blue=ORF Green=Tags(s)

TTTTGTAATACGACTCACTATAGGGCGGCCGGAATTCGTCGACTGGATCCGGTACCGAGGAGATCTGCC
GCC**CGATCGCC**

ATGGATTTTAAAATTGAACACACTTGGGATGGTTTTCCAGTGAAGCATGAGCCCGTATTTATCAGGCTGA
ATCCAGGTGACAGAGGAGTGATGATGGACATTAGTGCTCCATTTTTTCAGGGATCCTCCAGCCCCACTTGG
AGAACCAGGAAAACCTTTCAATGAAGTGTGGGATTATGAAGTTGTGGAAGCATTTTTCTTGAATGATATA
ACTGAGCAATATTTAGAAGTTGAACCTTTGTCCACGGACAGCATTTAGTGCTTTTACTTTCTGGAAGAA
GAAATGTGTGGAACAAGAAGTTCCTTTATCGTTCAGAATGTCCAGAGGAGAGACAAAATGGGAAGGCAA
AGCTTATCTCCCTTGGAGTTATTTTCCACCAAATGTGACAAAATTCGAATTCATTTGCAATTCATGGATCA
AAAGATAAACGAAGTTATGAAGCTCTTTACCCTGTACCTCAGCATGAACTGCAGCAAGGACAAAAACCTG
ATTTCCATTGCCTAGAATACTTCAAGTCTTTCAATTTTAAACACTGCTTGGAGAAGAGTGGAAACAACC
GGAATCAGACCTGTGGCTAATAGAGAAATGTGATATA

ACGCGTACGCGGCCGCTCGAGCAGAACTCATCTCAGAAGAGGATCTGGCAGCAAATGATATCCTGGATT
ACAAGGATGACGACGATAAGGTTTAA

Protein Sequence: >RC216543 representing NM_001099783
Red=Cloning site Green=Tags(s)

MDFKIEHTWDGFPVKHEPVFIRLNPGRGVMMDISAPFFRDPPAPLGEKGFNFELWDYEVVEAFFLNDI
TEQYLEVELCPHGQHLVLLLSGRRNVWKQELPLSFRMSRGETKWEKAYLPWSYFPPNVTKFNSFAIHGS
KDKRSYEALYPVQHELQGGKPDFHCLYFKSFNFNTLLGEEWKQPESDLWLIKCDI

TRTRPLEQKLISEEDLAANDILDYKDDDDKV

Chromatograms: https://cdn.origene.com/chromatograms/mk6337_a12.zip



[View online »](#)

Restriction Sites: SgfI-MluI

Cloning Scheme:



ACCN: NM_001099783

ORF Size: 597 bp

OTI Disclaimer: The molecular sequence of this clone aligns with the gene accession number as a point of reference only. However, individual transcript sequences of the same gene can differ through naturally occurring variations (e.g. polymorphisms), each with its own valid existence. This clone is substantially in agreement with the reference, but a complete review of all prevailing variants is recommended prior to use. [More info](#)

OTI Annotation: This clone was engineered to express the complete ORF with an expression tag. Expression varies depending on the nature of the gene.

Components: The ORF clone is ion-exchange column purified and shipped in a 2D barcoded Matrix tube containing 10ug of transfection-ready, dried plasmid DNA (reconstitute with 100 ul of water).

- Reconstitution Method:**
1. Centrifuge at 5,000xg for 5min.
 2. Carefully open the tube and add 100ul of sterile water to dissolve the DNA.
 3. Close the tube and incubate for 10 minutes at room temperature.
 4. Briefly vortex the tube and then do a quick spin (less than 5000xg) to concentrate the liquid at the bottom.
 5. Store the suspended plasmid at -20°C. The DNA is stable for at least one year from date of shipping when stored at -20°C.

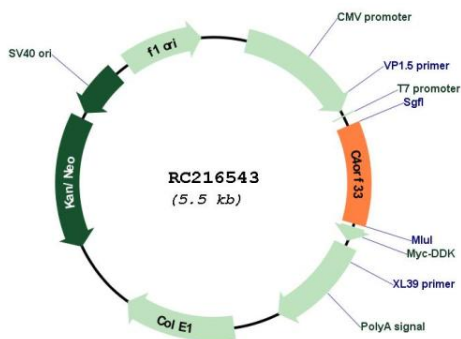
Note: Plasmids are not sterile. For experiments where strict sterility is required, filtration with 0.22um filter is required.

RefSeq: [NM_001099783.2](#)

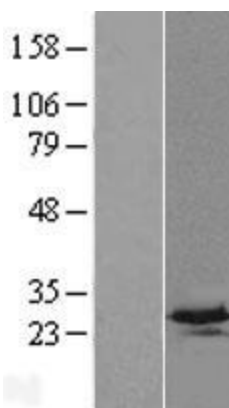
RefSeq Size: 1601 bp

RefSeq ORF: 600 bp

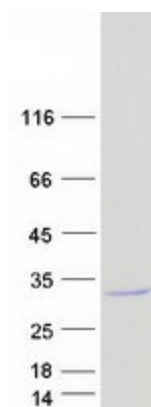
Locus ID: 132321
UniProt ID: [Q8N1A6](#)
Cytogenetics: 4q28.2
MW: 23.3 kDa

Product images:


Circular map for RC216543



Western blot validation of overexpression lysate (Cat# [LY420533]) using anti-DDK antibody (Cat# [TA50011-100]). Left: Cell lysates from untransfected HEK293T cells; Right: Cell lysates from HEK293T cells transfected with RC216543 using transfection reagent MegaTran 2.0 (Cat# [TT210002]).



Coomassie blue staining of purified C4orf33 protein (Cat# [TP316543]). The protein was produced from HEK293T cells transfected with C4orf33 cDNA clone (Cat# RC216543) using MegaTran 2.0 (Cat# [TT210002]).