

Product datasheet for **RC216540**

HGSNAT (NM_152419) Human Tagged ORF Clone

Product data:

Product Type:	Expression Plasmids
Product Name:	HGSNAT (NM_152419) Human Tagged ORF Clone
Tag:	Myc-DDK
Symbol:	HGSNAT
Synonyms:	HGNAT; MPS3C; RP73; TMEM76
Mammalian Cell Selection:	Neomycin
Vector:	pCMV6-Entry (PS100001)
E. coli Selection:	Kanamycin (25 ug/mL)



[View online »](#)

ORF Nucleotide
Sequence:

>RC216540 representing NM_152419
Red=Cloning site Blue=ORF Green=Tags(s)

TTTTGTAATACGACTCACTATAGGGCGGCCGGAATTCGTCGACTGGATCCGGTACCGAGGAGATCTGCC
GCCGCGATCGCC

ATGAGCGGGCGGGCAGGGCGCTGGCCGCGCTGCTGCTGGCCGCTCCGTGCTGAGCGCCGCGCTGCTGG
CCCCCGGCGGCTCTTCGGGGCGCGATGCCAGGCCGCGCCGACGAGACTTAGACAAAAAAGACATGC
AGAGCTGAAGATGGATCAGGCTTTGCTACTCATCCATAATGAACTTCTCTGGACCAACTGACCGTCTAC
TGGAAATCTGAATGCTGTATCACTGCTTGTTCAGGTTCTGGTAAACGTTCTCAGAGTCCAAAAGCAG
GGAAGCCTAGTGTGCAGCTGCCTCTGTGACACCCAGCAGGATCTATCCTGCAGCTGAACGACACCTT
GGAAGAGAAGAAGTTTGTAGGTTGGAATACAGATTTGGAGAATTTGGAACTATTCTCTTTGGTAAAG
AACATCCATAATGGAGTTAGTGAATTGCCTGTGACCTGGCTGTGAACGAGGATCCAGTTGATAGTAACC
TTCTGTGAGCATTGCATTCTTATTGGTCTTGTGTCATCATTGTGATATCCTTTCTGAGGCTCTTGT
GAGTTTGGATGACTTTAAACAATTGGATTTCTAAAGCCATAAGTTCTCGAGAACTGATCGCCTCATCAAT
TCTGAGCTGGGATCTCCAGCAGGACAGACCCTCTCGATGGTGTGTTCCAGCCAGCAACGTGGCGTCTAT
CTGCCCTGCCGCCCGCCTCCGACGCTGGACACCTTCAGGGGGATTGCTCTTATACTCATGGTCTTTGT
CAATTATGGAGGAGAAAATATTGGTACTTCAAACATGCAAGTTGGAATGGGCTGACAGTGGCTGACCTC
GTGTTCCCGTGGTTTGTATTTATATGGGATCTCCATTTTTCTATCGATGACTTCTATACTGCAACGGG
GGTGTAAAAATTGAGTTGCTGGGGAAGATTGCATGGAGGAGTTTCTGTTAATCTGCATAGGAATTAT
CATTGTGAATCCCAATTATTGCCTTGGTCCATTGTCTTGGGACAAGGTGCCATTCTGGTGTGCTGCAG
CGATTGGGAGTGACATACTTTGTGGTTGCTGTGTTGGAGCTCCTTTTGTAAACCTGTGCCTGAACATT
GTGCCTCGGAGAGGAGCTGCCTTTCTCTCGAGACATCACGTCCAGCTGGCCCCAGTGGCTGCTCATCCT
GGTGTGGAAGGCCTGTGGCTGGGCTTGACATTCTCCTGCCAGTCCCTGGGTGCCCTACTGGTTATCTT
GGTCTGGGGCATTGGAGATTTTGGCAAGTATCCAAATTGCACTGGAGGAGCTGCAGGCTACATCGACC
GCCTGCTGCTGGGAGACGATCACCTTTACCAGCACCCATCTTCTGCTGTACTTTACCACACCGAGGTGGC
CTATGACCCCGAGGGCATCCTGGGCACCATCAACTCCATCGTGATGGCCTTTTTAGGAGTTCAGGCAGGA
AAAATACTATTGTATTACAAGGCTCGGACCAAAGACATCCTGATTGATTCACTGCTTGGTGTGATTCT
TTGGGCTCATTCTGTTGCTCTGACGAAGGTTTCTGAAAATGAAGGCTTTATTCCAGTAAACAAAAATCT
CTGGTCCCTTTTCGTATGCTACTACGCTCAGTTCTTTTGCCTTCTTCATCCTGCTGGTCTGTACCCAGTT
GTGGATGTGAAGGGCTGTGGACAGGAACCCATTCTTTATCCAGGAATGAATCCATTCTGGTATATG
TCGGCCACGAGGTGTTTGAGAACTACTTCCCCTTTCAGTGAAGCTGAAGGACAACCCAGTCCACAAAGGA
GCACCTGACTCAGAACATCGTCGCCACTGCCCTCTGGGTGCTCATTGCCTACATCCTCTATAGAAAGAAG
ATTTTTTGGAAAATC

ACGCGTACGCGGCCGCTCGAGCAGAACTCATCTCAGAAGAGGATCTGGCAGCAATGATATCCTGGATT
ACAAGGATGACGACGATAAGGTTTAA

Protein Sequence: >RC216540 representing NM_152419
 Red=Cloning site Green=Tags(s)

MSGAGRALAALLLAASVLSAALLAPGGSSGRDAQAAPPRDLDKKRHAELKMDQALLIHNELLWTNLT VY
 WKSECCYHCLFQVLVNPVQSPKAGKPSAAAAVSTQHGSILQLNDTLEEKEVCRLEYRFGFEGNYSLLVK
 NIHNGVSEIACDLAVNEDPVDSNLPVSI AFLIGLAVIIVISFLRLLSLDDFNNWISKAISSRETDRLIN
 SELGSPSRTPDLGDGVQPATWRLSALPPRLRSVDTFRGIALILMVFNYYGGKYWYFKHASWNLTVADL
 VFPWFVFIGSSIFLSMTSILQRGCSKFRLLGKI AWRSFLLICIGIIVNPNYCLGPLSWDKVRIPGVLQ
 RLGVTYFVAVLELLFAKPVPEHCASERSCLSRLDITSSWPQWLLILVLEGLWGLTFLLPVPGCPTGYL
 GPGGIGDFGKYPNCTGGAAGYIDRLLLGDHLYQHPSSAVLYHTEVAYDPEGILGTINSIVMAFLGVQAG
 KILLYKARTKDILIRFTA WCCILGLISVALTKVSENEGFI PVNKNLWLSYVTTLSSFAFFILLVLYPV
 VDVKGLWTGTPFFYPGMNSILVYVGHEVFENYFPFQWKLKDNQSHKEHLTQNI VATALWVLIAYILYRKK
 IFWKI

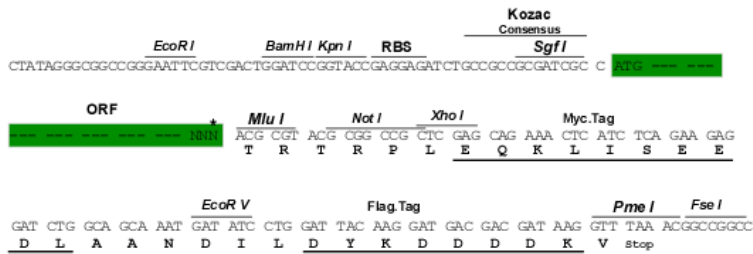
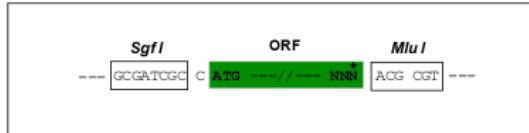
TRTRPLEQKLI SEEDLAANDILDYKDDDDKV

Chromatograms: https://cdn.origene.com/chromatograms/mg4141_c08.zip

Restriction Sites: SgfI-MluI

Cloning Scheme:

Cloning sites used for ORF Shuttling:



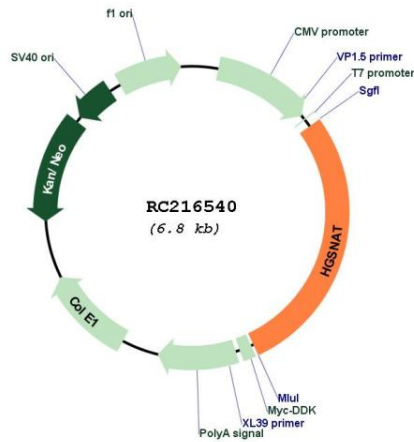
* The last codon before the Stop codon of the ORF

ACCN: NM_152419

ORF Size: 1905 bp

OTI Disclaimer:	Due to the inherent nature of this plasmid, standard methods to replicate additional amounts of DNA in E. coli are highly likely to result in mutations and/or rearrangements. Therefore, OriGene does not guarantee the capability to replicate this plasmid DNA. Additional amounts of DNA can be purchased from OriGene with batch-specific, full-sequence verification at a reduced cost. Please contact our customer care team at custsupport@origene.com or by calling 301.340.3188 option 3 for pricing and delivery.
	The molecular sequence of this clone aligns with the gene accession number as a point of reference only. However, individual transcript sequences of the same gene can differ through naturally occurring variations (e.g. polymorphisms), each with its own valid existence. This clone is substantially in agreement with the reference, but a complete review of all prevailing variants is recommended prior to use. More info
OTI Annotation:	This clone was engineered to express the complete ORF with an expression tag. Expression varies depending on the nature of the gene.
Components:	The ORF clone is ion-exchange column purified and shipped in a 2D barcoded Matrix tube containing 10ug of transfection-ready, dried plasmid DNA (reconstitute with 100 ul of water).
Reconstitution Method:	<ol style="list-style-type: none"> 1. Centrifuge at 5,000xg for 5min. 2. Carefully open the tube and add 100ul of sterile water to dissolve the DNA. 3. Close the tube and incubate for 10 minutes at room temperature. 4. Briefly vortex the tube and then do a quick spin (less than 5000xg) to concentrate the liquid at the bottom. 5. Store the suspended plasmid at -20°C. The DNA is stable for at least one year from date of shipping when stored at -20°C.
RefSeq:	NM_152419.3
RefSeq Size:	5228 bp
RefSeq ORF:	1908 bp
Locus ID:	138050
UniProt ID:	Q68CP4
Cytogenetics:	8p11.21-p11.1
Protein Families:	Transmembrane
Protein Pathways:	Glycosaminoglycan degradation, Lysosome, Metabolic pathways
MW:	70.3 kDa
Gene Summary:	This gene encodes a lysosomal acetyltransferase, which is one of several enzymes involved in the lysosomal degradation of heparin sulfate. Mutations in this gene are associated with Sanfilippo syndrome C, one type of the lysosomal storage disease mucopolysaccharidosis III, which results from impaired degradation of heparan sulfate. [provided by RefSeq, Jan 2009]

Product images:



Circular map for RC216540