

## Product datasheet for **RC216534**

### HPSE2 (NM\_021828) Human Tagged ORF Clone

#### Product data:

Product Type:	Expression Plasmids
Product Name:	HPSE2 (NM_021828) Human Tagged ORF Clone
Tag:	Myc-DDK
Symbol:	HPSE2
Synonyms:	HPA2; HPR2; UFS; UFS1
Mammalian Cell Selection:	Neomycin
Vector:	pCMV6-Entry (PS100001)
E. coli Selection:	Kanamycin (25 ug/mL)



[View online »](#)

**ORF Nucleotide Sequence:**

>RC216534 ORF sequence  
 Red=Cloning site Blue=ORF Green=Tags(s)

TTTTGTAATACGACTCACTATAGGGCGGCCGGGAATTCGTCGACTGGATCCGGTACCGAGGAGATCTGCC  
 GCC**CGGATCGCC**

ATGAGGGTGTCTTGTGCCTTCCCTGAAGCCATGCCTCCAGCAACTCCCGCCCCCGCGTGCCTAGCCC  
 CGGGGCTCTCTACTTGGCTCTGTTGCTCCATCTCTCCCTTCTCCAGGCTGGAGACAGGAGACCCTT  
 GCCTGTAGACAGAGCTGCAGGTTGAAGGAAAAGACCCTGATTCTACTTGATGTGAGCACCAAGAACCCA  
 GTCAGGACAGTCAATGAGAACTTCTCTCTGACGCTGGATCCGTCATCATTGATGATGGCTGGCTCG  
 ATTTCTAAGCTCCAAGCGCTTGGTGACCTGGCCGGGGACTTTCGCCCGCTTCTGCGCTTCGGGGG  
 CAAAAGGACCGACTTCTGCAGTCCAGAACCTGAGGAACCCGGCGAAAAGCCGCGGGGGCCGGGCCCG  
 GATTACTATCTCAAAAATATGAGGATGACATTGTTGAAAGTATGTTGCCTTAGATAAACAGAAAGGCT  
 GCAAGATTGCCAGCACCTGATGTTATGCTGGAGCTCAAAGGGAGAAGGCAGCTCAGATGCATCTGGT  
 TCTTCTAAAGGAGCAATTCTCAAACTTACAGTAATCTCATATTAACAGCCAGGCTCTAGACAAACTT  
 TATAACTTTGCTGATTGCTCTGGACTCCACCTGATATTTGCTCTAAATGCACTGCGTCTGATCCCAATA  
 ACTCTGGAACAGTTCTAGTGCCCTGAGTCTGTTGAAGTACAGCGCCAGCAAAAAGTACAACATTTCTTG  
 GAACTGGGTAATGAGCCAAATAACTATCGGACCATGCATGGCCGGGAGTAAATGGCAGCCAGTTGGGA  
 AAGGATTACATCCAGCTGAAGAGCCTGTTGACGCCATCCGGATTTATCCAGAGCCAGCTTATATGGCC  
 CTAATATTGGGCGGCCGAGGAAGAATGTCATCGCCCTCTAGATGGATTCATGAAGGTGGCAGGAAGTAC  
 AGTAGATGCAGTTACCTGGCAACATTGCTACATTGATGGCCGGTGGTCAAGGTGATGGACTTCTGAAA  
 ACTCGCTGTTAGACACACTCTGACCAAGATTAGGAAAATTAGAAAAGTGGTAAATACATACACTCCAG  
 GAAAGAAGATTTGGCTTGAAGGTGGTGACCACTCAGCTGGAGGCACAAAACATCTATCCGATTCCTA  
 TGCTGCAGGATCTTATGGTTGAACACTTAGGAATGCTGGCCAATCAGGGCATTGATGTCGTGATACGG  
 CACTCATTTTTTACCAGTGGATAACAATCACCTCGTGGACCAAGATTTTAAACCATTACCAGACTACTGGC  
 TCTCTCTCTCTACAAGCGCCTGATCGGCCCAAAGTCTTGGCTGTGCATGTGGCTGGGCTCCAGCGGAA  
 GCCACGGCTGGCCGAGTATCCGGGACAACTAAGGATTTATGCTCACTGCACAAACCACCACAACCAC  
 AACTACGTTCTGGGTCCATTACACTTTTTATCATCAACTGCATCGATCAAGAAAGAAAATCAAGCTGA  
 CTGGGACTCTCAGAGACAAGCTGGTCCACAGTACCTGCTGCAGCCCTATGGGCAGGAGGCGCTAAAGTC  
 CAAGTCAGTCAACTGAATGGCCAGCCCTTAGTGATGGTGGACGACGGGACCCTCCAGAATTGAAGCCC  
 CGCCCCCTTCGGCCGGCCGGACATTGGTCATCCCTCCAGTACCATGGGCTTTTTTGTGGTCAAGAAATG  
 CAATGCTTTGGCTGCCCTACCGA

**ACGCGT**ACGCGGCCGCTCGAGCAGAAACTCATCTCAGAAGAGGATCTGGCAGCAAATGATATCCTGGATT  
 ACAAGGATGACGACGATAAGGTTTAA

**Protein Sequence:**

>RC216534 protein sequence  
 Red=Cloning site Green=Tags(s)

MRVLCAPPEAMPSSNSRPPACLAPGALYLALLLHLSLSSQAGDRRPLPVDRAAGLKEKTLILLDVSTKNP  
 VRTVNFENFLSLQLDPSIIHDGWLDFLSSKRLVTLARGLSPAFLRFGGKRTDFLQFQNLNRPASRGGPGP  
 DYLLKNYEDDIVRSDVALDKQKQCKIAQHPDVMLELQREKAAQMHLLVLLKEQFSNTYSNLILTARSLDKL  
 YNFADCSGLHLIFALNALRRNPNSWNSSALSLLKYSASKKYNI SWELGNEPNNYRTMHGRAVNGSQLG  
 KDYIQLKSLQLQIRIYSRASLYGPNIGRPRKNVIALLDGFMKVAGSTVDAVTWQHICYIDGRVVKVMDFLK  
 TRLLDTLSDQIRKIQKVNTYTPGKKIWLEGVVTT SAGGTNNLSDSYAAGFLWLNTLGMLANQGIDVVIR  
 HSFFDHGYNHLVDQNFNPLPDYWL SLLYKRLIGPKVLAVHVAGLQRKPRGRVIRDKLRIYAHCTNHHNH  
 NYVRGSITLFIINLHRSRKKIKLTGTLRDKLVHQYLLQPYQEGLEKSKSVQLNGQPLVMVDDGTLPELKP  
 RPLRAGRTLVIIPVMTMGFFVVKVNVNACRYR

**TRTRPLEQKLISEEDLAANDILDYKDDDDKV**

**Chromatograms:**

[https://cdn.origene.com/chromatograms/mk6747\\_d10.zip](https://cdn.origene.com/chromatograms/mk6747_d10.zip)



**Reconstitution Method:**

1. Centrifuge at 5,000xg for 5min.
2. Carefully open the tube and add 100ul of sterile water to dissolve the DNA.
3. Close the tube and incubate for 10 minutes at room temperature.
4. Briefly vortex the tube and then do a quick spin (less than 5000xg) to concentrate the liquid at the bottom.
5. Store the suspended plasmid at -20°C. The DNA is stable for at least one year from date of shipping when stored at -20°C.

**RefSeq:** [NM\\_021828.5](#)

**RefSeq Size:** 4349 bp

**RefSeq ORF:** 1779 bp

**Locus ID:** 60495

**UniProt ID:** [Q8WWQ2](#)

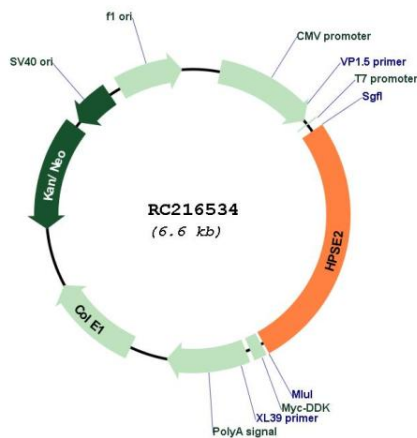
**Cytogenetics:** 10q24.2

**Protein Pathways:** Glycosaminoglycan degradation, Metabolic pathways

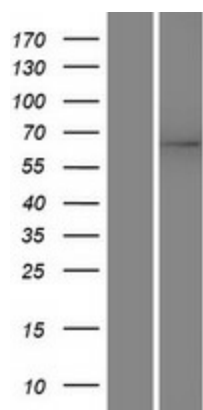
**MW:** 66.6 kDa

**Gene Summary:** This gene encodes a heparanase enzyme. The encoded protein is an endoglycosidase that degrades heparin sulfate proteoglycans located on the extracellular matrix and cell surface. This protein may be involved in biological processes involving remodeling of the extracellular matrix including angiogenesis and tumor progression. Alternate splicing results in multiple transcript variants. [provided by RefSeq, Oct 2009]

### Product images:



Circular map for RC216534



Western blot validation of overexpression lysate (Cat# [LY411910]) using anti-DDK antibody (Cat# [TA50011-100]). Left: Cell lysates from untransfected HEK293T cells; Right: Cell lysates from HEK293T cells transfected with RC216534 using transfection reagent MegaTran 2.0 (Cat# [TT210002]).