

Product datasheet for **RC216533**

CD35 (CR1) (NM_000573) Human Tagged ORF Clone

Product data:

Product Type:	Expression Plasmids
Product Name:	CD35 (CR1) (NM_000573) Human Tagged ORF Clone
Tag:	Myc-DDK
Symbol:	CD35
Synonyms:	C3BR; C4BR; CD35; KN
Mammalian Cell Selection:	Neomycin
Vector:	pCMV6-Entry (PS100001)
E. coli Selection:	Kanamycin (25 ug/mL)
ORF Nucleotide Sequence:	>RC216533 representing NM_000573 Red=Cloning site Blue=ORF Green=Tags(s)

TTTTGTAATACGACTCACTATAGGGCGGCCGGAATTCGTCGACTGGATCCGGTACCGAGGAGATCTGCC
GCC**CGATCGCC**

ATGGGGGCTCTTCTCCAAGAAGCCCGGAGCCTGTGGGGCCCGCGCCCGGTCTCCCCTTCTGCTGCG
GAGGATCCCTGCTGGCGTTGTGGTGTCTTGCCTGCCGTGGCTGGGTCAATGCAATGCCCCAGA
ATGGCTCCATTTGCCAGGCCTACCAACCTAACTGATGAATTTGAGTTTCCATTGGGACATATCTGAAC
TATGAATGCCGCCCTGGTTATCCGGAAGACCGTTTTCTATCATCTGCCTAAAAAAGTCTGACTG
GTGCTAAGGACAGGTGCAGACGTAATCATGTCTGAATCTCCAGATCCTGTGAATGGCATGGTGCATGT
GATCAAAGGCATCCAGTTCGGATCCCAAATTAATATTCTTGTACTAAAGGATACCGACTCATTGGTTCC
TCGTCTGCCACATGCATCATCTCAGGTGACTGTCAATTTGGGATAATGAAACACCTATTTGTGACAGAA
TTCTTGTGGGCTACCCCCACCATCACAATGGAGATTTCAATAGCACCAACAGAGAGAATTTTACTA
TGGATCAGTGGTACCTACCGCTGCAATCCTGGAAGCGGAGGGAGAAAGGTGTTTGAGCTTGTGGGTGAG
CCCTCCATATACTGCACCAGCAATGACGATCAAGTGGCATCTGGAGCGGCCCGCCCTCAGTGCATTA
TACCTAACAAATGCACGCCTCCAAATGTGAAAAATGGAATATTGGTATCTGACAACAGAAGCTTATTTTC
CTTAAATGAAGTTGTGGAGTTTAGTGTACGCTGGCTTTGTTCATGAAAGGACCCCGCGTGTGAAGTGC
CAGGCCCTGAACAAATGGGAGCCGGAGCTACCAAGCTGCTCCAGGTATGTCAGCCACCTCCAGATGTCC
TGATGCTGAGCGTACCCAAAGGACAAGGACAACCTTTTACCTGGGCAGGAAGTGTCTACAGCTGTGA
GCCCGGCTACGACCTCAGAGGGCTGCGTCTATGCGCTGCACACCCAGGAGACTGGAGCCCTGCAGCC
CCCACATGTGAAGTGAATCCTGTGATGACTTCATGGGCCAACTTCTTAATGGCCGTGTCTATTTCCAG
TAAATCTCCAGCTTGGAGCAAAAGTGGATTTTGTGGTGTGAAGGATTTCAATTAAGGCAGCTCTGC
TAGTACTGTGTCTTGGCTGGAATGAAAGCCTTTGGAATAGCAGTGTCCAGTGTGTGAACAAATCTTT
TGTCGAAGTCTCCAGTTATTCTAATGGGAGACACAGGAAAACCTCTGGAAGCTTTCCCTTTGGGA
AAACAGTAAATTACACATGCGACCCCAACAGACAGAGGGACGAGCTTCGACCTCATTGGAGAGAGCAC
CATCCGCTGCACAAGTGACCCTCAAGGGAATGGGTTTGGAGCAGCCCTGCCCTCGCTGTGAATCTGT



[View online >](#)

GGTCACTGTCAAGCCCCAGATCATTTTTCTGTTTGCCAAGTTGAAAACCCAAACCAATGCATCTGACTTTC
 CCATTGGGACATCTTTAAAGTACGAATGCCGCTGAGTACTACGGGAGGCCATTCTCTATCACATGTCT
 AGATAACCTGGTCTGGTCAAGTCCCAAAGATGTCTGTAACGTAATCATGTAAAACCTCCAGATCCA
 GTGAATGGCATGGTGCATGTGATCACAGACATCCAGGTTGGATCCAGAATCAACTATTCTGTACTACAG
 GGCACCGACTCATTGGTCACTCATCTGCTGAATGTATCCTCTCGGCAATGCTGCCATTGGAGCACGAA
 GCCGCCAATTTGTCAACGAATTCCTTGTGGGCTACCCCCACCATCGCCAATGGAGATTTTCATTAGCACC
 AACAGAGAGAATTTTCACTATGGATCAGTGGTGACCTACCGCTGCAATCCTGGAAGCGGAGGGAGAAGG
 TGTTTGAGCTTGTGGGTGAGCCCTCCATATACTGCACCAGCAATGACGATCAAGTGGGCATCTGGAGCGG
 CCCGGCCCTCAGTGCATTATACCTAACAAATGCACGCCTCCAAATGTGGAATTTGGAATATTGGTATCT
 GACAACAGAAGCTTATTTTCTTAAATGAAGTTGTGGAGTTTAGGTGTCAGCCTGGCTTTGTCATGAAAAG
 GACCCCGCGTGTGAAGTGCCAGGCCCTGAACAAATGGGAGCCGGAGCTACCAAGCTGCTCCAGGGTATG
 TCAGCCACCTCCAGATGTCTGCATGCTGAGCGTACCCAAAGGGACAAGGACAACTTTTACCCGGGCAG
 GAAGTGTCTACAGCTGTGAGCCCGCTATGACCTCAGAGGGGCTGCGTCTATGCGCTGCACACCCAGG
 GAGACTGGAGCCCTGCAGCCCCACATGTGAAGTAAAATCCTGTGATGACTTCATGGCCAACTTCTTAA
 TGCCCGTGTGCTATTTCCAGTAAATCTCCAGCTTGGAGCAAAAGTGGATTTTGTGGTGTGAAGGATTT
 CAATTAAGGAGCAGCTCTGCTAGTTATTGTGCTTGGCTGGAATGAAAGCCTTTGGAATAGCAGTGTTT
 CAGTGTGTGAACAAATCTTTTGTCCAAGTCTCCAGTTATTCTAATGGGAGACACACAGAAAACCTCT
 GGAAGTCTTTCCCTTTGGAAAAGCAGTAAATTACACATGCGACCCCAACCCAGACAGAGGGACGAGCTTC
 GACCTCATTGGAGAGAGCACCATCCGCTGCACAAGTGACCTCAAGGGAATGGGGTTTGGAGCAGCCCTG
 CCCCTCGCTGTGGAATTTCTGGTCACTGTCAAGCCCCAGATCATTTTTCTGTTTGCCAAGTTGAAAACCA
 AACCAATGCATCTGACTTTCCATTGGGACATCTTTAAAGTACGAATGCCGCTCTGAGTACTACGGGAGG
 CCATTCTCTATCACATGTCTAGATAACCTGGTCTGGTCAAGTCCCAAAGATGTCTGTAACGTAATCAT
 GTAAAACCTCCAGATCCAGTGAATGGCATGGTGCATGTGATCACAGACATCCAGGTTGGATCCAGAAT
 CAACTATTCTTGTACTACAGGGCACCGACTCATTGGTCACTCATCTGCTGAATGTATCCTCTCAGCAAT
 ACTGCCATTGGAGCACGAAGCCGCAATTTGTCAACGAATTCCTTGTGGGCTACCCCCAACCATCGCCA
 ATGGAGATTTTCATTAGCACCAACAGAGAGAATTTTCACTATGGATCAGTGGTGACCTACCGCTGCAATCT
 TGGAAAGCAGAGGGAGAAAAGGTGTTTGTGGTGTGGGCTCCATATACTGCACCAGCAATGACGAT
 CAAGTGGGCATCTGGAGCGGCCCGCCCTCAGTGCATTATACCTAACAAATGCACGCCTCCAAATGTGG
 AAAATGGAATATTGGTATCTGACAACAGAAGCTTATTTTCTTAAATGAAGTTGTGGAGTTTAGGTGTCA
 GCCTGGCTTTGTCATGAAAGGACCCCGCGTGTGAAGTGCCAGGCCCTGAACAAATGGGAGCCAGAGTTA
 CCAAGCTGCTCCAGGGTGTGTCAGCCGCTCCAGAAATCCTGCATGGTGAGCATACCCCAAGCCATCAGG
 ACAACTTTTACCTGGGACGAAAGTGTCTACAGCTGTGAGCCTGGCTATGACCTCAGAGGGGCTGCGTC
 TCTGCACTGCACACCCCAAGGAGACTGGAGCCCTGAAGCCCCGAGATGTGCAAGTAAAATCCTGTGATGAC
 TTCTTGGGTCACTCCCTCATGGCCGTGTGCTATTTCCACTTAATCTCCAGCTTGGGGCAAGGTGTCTT
 TTGTCTGTGATGAAGGGTTTTCGTTAAAGGGCAGTTCCGTTAGTCATTGTGTCTTGGTGGAAATGAGAAG
 CCTTTGGAATAACAGTGTCTGTGTGAACATATCTTTTGTCCAAATCCTCCAGCTATCCTTAATGGG
 AGACACACAGGAACTCCCTCTGGAGATATCCCTATGGAAGAAATATCTTACACATGTGACCCCCACC
 CAGACAGAGGGATGACCTTCAACCTCATTGGGGAGAGCACCATCCGCTGCACAAGTGACCCCTCATGGGAA
 TGGGGTTTGGAGCAGCCCTGCCCTCGCTGTGAACCTTTCTGTTGCTGCTGGTCACTGTAACCCAGAG
 CAGTTTCCATTTGCCAGTCTACGATCCCAATTAATGACTTTGAGTTTCCAGTCCGGACATCTTTGAATT
 ATGAATGCCGTCTGGGTATTTTGGAAAATGTTCTCTATCTCCTGCCTAGAAAACCTGGTCTGGTCAAG
 GTTTGAAGACAACGTAGACGAAAATCATGTGGACCTCCACCAGAACCCTTCAATGGAATGGTGCATATA
 AACACAGATACACAGTTTGGATCAACAGTTAATTATTCTTGAATGAAGGGTTTTCGACTCATTGGTTCCC
 CATCTACTACTTGTCTCGTCTCAGGCAATAATGTCACATGGGATAAGAAGGCACCTATTTGTGAGATCAT
 ATCTTGTGAGCCACCTCCAACCATATCCAATGGAGACTTCTACAGCAACAATAGAACATCTTTTCACAAT
 GGAACGGTGGTAACTTACCAGTGCCACACTGGACCAGATGGAGAACAGCTGTTTGTGAGCTTGTGGGAGA
 GGTCAATATATTGCACCAGCAAAGATGATCAAGTTGGTGTGGAGCAGCCCTCCCCTCGGTGATTTT
 TACTAATAAATGCACAGCTCCAGAAGTTGAAAATGCAATTAGAGTACCAGGAAACAGGAGTTTCTTACC
 CTCACTGAGATCATCAGATTTAGATGTCAGCCCGGTTTGTGATGGTAGGGTCCCACACTGTGCAAGTGC
 AGACCAATGGCAGATGGGGGCCAAGCTGCCACACTGCTCCAGGGTGTGTGAGCCGCTCCAGAAATCCT
 GCATGGTGTGAGCATACCCTAAGCCATCAGGACAACCTTTTCACTGGGCAGGAAGTGTCTACAGCTGTGAG
 CCCAGCTATGACCTCAGAGGGGCTGCGTCTGCACTGCACGCCCCAGGGAGACTGGAGCCCTGAAGCCC

CTAGATGTACAGTAAAATCCTGTGATGACTTCCTGGGCCAACTCCCTCATGGCCGTGTGCTACTTCCA
TAATCTCCAGCTTGGGGCAAAGGTGCCTTTGTTTGCATGAAGGGTTCCGATAAAAGGCAGGTCTGCT
AGTCATTGTGCTTGGCTGGAATGAAAGCCCTTTGGAATAGCAGTGTCCAGTGTGTGAACAAATCTTTT
GTCCAAATCCTCCAGCTATCCTTAATGGGAGACACACAGGAACTCCCTTTGGAGATATCCCTATGGAAA
AGAAATATCTTACGCATGCGACACCCACCCAGACAGAGGGATGACCTTCAACCTCATTGGGGAGAGCTCC
ATCCGCTGCACAAGTGACCCTCAAGGGAATGGGTTTGGAGCAGCCCTGCCCTCGCTGTGAACTTTCTG
TTCCTGTGCTGCCACATCCACCAAGATCCAAAACGGGCATTACATTGGAGGACACGTATCTCTATA
TCTTCTGGGATGACAATCAGCTACATTTGTGACCCCGCTACCTGTTAGTGGGAAAGGGCTTCATTTTC
TGTACAGACCAGGAATCTGGAGCCAATTGGATCATTATTGCAAAGAAGTAAATTGTAGCTTCCCCTGT
TTATGAATGGAATCTCGAAGGAGTTAGAAATGAAAAAGTATATCACTATGGAGATTATGTACTTTGAA
GTGTGAAGATGGGTATACTCTGGAAGGCAGTCCCTGGAGCCAGTGCCAGGCGGATGACAGATGGGACCT
CCTCTGGCCAAATGTACCTCTCGTACACATGATGCTCTCATAGTTGGCACTTTATCTGGTACGATCTTCT
TTATTTTACTCATATTTTCTCTCTTTGGATAATTCTAAAGCACAGAAAAGGCAATAATGCACATGAAAA
CCCTAAAGAAGTGGCTATCCATTTACATTTCTCAAGGAGGCAGCAGCGTTCATCCCGAACTCTGCAACA
AATGAAGAAAATAGCAGGGTCTTCCT

ACGCGTACGCGGCCGCTCGAGCAGAACTCATCTCAGAAGAGGATCTGGCAGCAAATGATATCCTGGATT
ACAAGGATGACGACGATAAGGTTAA

Protein Sequence: >RC216533 representing NM_000573
 Red=Cloning site Green=Tags(s)

MGASSPRSPPEVGPAPGLPFCCGGSLAVVLLALPVAWGQCNAPEWLPFARPTNLTDEFEFPIGTYLN
 YECRPGYSGRPFIIICLKNVWTGAKDRRCRRKSCRNPPDPVNGMVHVIKGIQFGSQIKYSCTKGYRLIGS
 SSATCIIISGDTVIWDNETPICDRIPCGLPPTITNGDFISTNRENFHYGSSVVTYRCNPGSGGRKVFELVGE
 PSYICTSNDDQVGIWGPAPQCIIPNKCTPPNVENGILVSDNRSLSLNEVVEFRCQPGFVMKGPRRVK
 QALNKWEPELPSCSRVCQPPDVLHAERTQRDKDNFSPGQEVFYSCEPGYDLGAASMRCTPQGDWSPA
 PTCEVKSCDDFMGQLLNGRVLFPVNLQLGAKVDFVCEGFLKGGSSASYCVLAGMESLWSSVVPVCEQIF
 CPSPPVIPNGRHTGKPLEVFPFGKTVNYTCDPHDRGTSFDLIGESTIRCTSDPQNGVWSSAPRCGIL
 GHCQAPDHFLFAKLKTQTNASDFPIGTSLKYECPPEYGRPFITCLDNLVWSSPKDVCKRKSCTKPPDP
 VNGMVHVIDIQVGSRIYNSCTTGHRILGHSSAECILSGNAAHWSTKPPICQRIQIPGLPPTIANGDFIST
 NRENFHYGSSVVTYRCNPGSGGRKVFELVGEPSYICTSNDDQVGIWGPAPQCIIPNKCTPPNVENGILV
 DNRSLFSLNEVVEFRCQPGFVMKGPRRVKQALNKWEPELPSCSRVCQPPDVLHAERTQRDKDNFSPGQ
 EVFYSCEPGYDLGAASMRCTPQGDWSPAAPTCEVKSCDDFMGQLLNGRVLFPVNLQLGAKVDFVCEG
 FLKGGSSASYCVLAGMESLWSSVVPVCEQIFCPSPPVIPNGRHTGKPLEVFPFGKAVNYTCDPHDRGTS
 DLIIGESTIRCTSDPQNGVWSSAPRCGILGHCQAPDHFLFAKLKTQTNASDFPIGTSLKYECPPEYGR
 PFSITCLDNLVWSSPKDVCKRKSCTKPPDPVNGMVHVIDIQVGSRIYNSCTTGHRILGHSSAECILSGN
 TAHWSTKPPICQRIQIPGLPPTIANGDFISTNRENFHYGSSVVTYRCNLGSRGRKVFELVGEPSYICTSND
 QVGIWGPAPQCIIPNKCTPPNVENGILVSDNRSLSLNEVVEFRCQPGFVMKGPRRVKQALNKWEPEL
 PSCSRVCQPPPEILHGEHTPSHQDNFSPGQEVFYSCEPGYDLGAASLHCTPQGDWSPEAPRCAVKSCDD
 FLGQLPHGRVLFPLNLQLGAKVDFVCEGFLKGGSSVSHCVLVGMRSWSSVVPVCEHIFCPNPPAILNG
 RHTGTSPGDIPIYGKEISYTCDPHPDRGTMFNLIIGESTIRCTSDPHGNGVWSSAPRCEL SVRAGHCKTPE
 QFFPASPTIPINDFEFPVGTSLNYECPGYFGKMFISISLENLVSSVEDNCRKSCGPPPEPFNGMVHI
 NTDTFQGSTVNYSCNEGFRILIGSPSTTCLVSGNNVTWKKAPICEIISCEPPTISNGDFYSNNRTSFHN
 GTVVTYQCHTGPDGEQLFELVGERSIYCTSKDDQVGVWSSPPRCISTNKCTAPEVENAIRVPGNRSFFT
 LTEIIRFRCQPGFVMVGSHTVQCQTNGRWGPKLPHCSRVCPPEILHGEHTLSHQDNFSPGQEVFYSCE
 PSYDLRGAASLHCTPQGDWSPEAPRCTVKSCDDFLGQLPHGRVLLPLNLQLGAKVDFVCEGFLKGRSA
 SHCVLAGMKALWSSVVPVCEQIFCPNPPAILNGRHTGTPFGDIPYGKEISYACDTHPDRGTMFNLI GESS
 IRCTSDPQNGVWSSAPRCEL SVPAACPHPPKIQNGHYIGGHVSLYLPGMTISYICDPGYLLVGKGFIF
 CTDQGIWSQLDHYCKEVNCSFPLFMNGISKELEMKKVYHYGDYVTLKCEDGYTLEGSPWSQCQADDRWDP
 PLAKCTSRTHDALIVGTLSGTIFILLIIFLSWIILKHKRKGNAHENPKEVAIHLHSQGGSSVHPRTLQT
 NEENSRVLP

TRTRPLEQKLISEEDLAANDILDYKDDDDKV

Restriction Sites: SgfI-MluI

Cloning Scheme:


ACCN: NM_000573

ORF Size: 6117 bp

OTI Disclaimer: Due to the inherent nature of this plasmid, standard methods to replicate additional amounts of DNA in E. coli are highly likely to result in mutations and/or rearrangements. Therefore, OriGene does not guarantee the capability to replicate this plasmid DNA. Additional amounts of DNA can be purchased from OriGene with batch-specific, full-sequence verification at a reduced cost. Please contact our customer care team at custsupport@origene.com or by calling 301.340.3188 option 3 for pricing and delivery.

The molecular sequence of this clone aligns with the gene accession number as a point of reference only. However, individual transcript sequences of the same gene can differ through naturally occurring variations (e.g. polymorphisms), each with its own valid existence. This clone is substantially in agreement with the reference, but a complete review of all prevailing variants is recommended prior to use. [More info](#)

OTI Annotation: This clone was engineered to express the complete ORF with an expression tag. Expression varies depending on the nature of the gene.

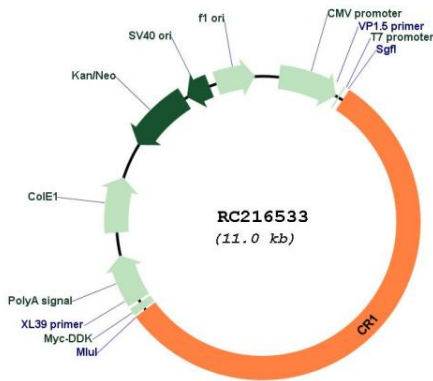
Components: The ORF clone is ion-exchange column purified and shipped in a 2D barcoded Matrix tube containing 10ug of transfection-ready, dried plasmid DNA (reconstitute with 100 ul of water).

- Reconstitution Method:**
1. Centrifuge at 5,000xg for 5min.
 2. Carefully open the tube and add 100ul of sterile water to dissolve the DNA.
 3. Close the tube and incubate for 10 minutes at room temperature.
 4. Briefly vortex the tube and then do a quick spin (less than 5000xg) to concentrate the liquid at the bottom.
 5. Store the suspended plasmid at -20°C. The DNA is stable for at least one year from date of shipping when stored at -20°C.

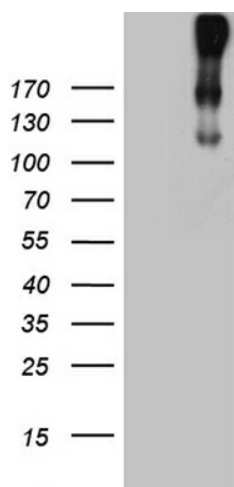
RefSeq: [NM_000573.4](#)
RefSeq Size: 8629 bp
RefSeq ORF: 6120 bp
Locus ID: 1378
UniProt ID: [P17927](#)
Cytogenetics: 1q32.2
Protein Families: Druggable Genome, Transmembrane
Protein Pathways: Complement and coagulation cascades, Hematopoietic cell lineage
MW: 223.7 kDa

Gene Summary: This gene is a member of the receptors of complement activation (RCA) family and is located in the 'cluster RCA' region of chromosome 1. The genome is polymorphic at this locus with allele-specific splice variants encoding different isoforms, based on the presence/absence of long homologous repeats (LHRs). The gene encodes a monomeric single-pass type I membrane glycoprotein found on erythrocytes, leukocytes, glomerular podocytes, and splenic follicular dendritic cells. The Knops blood group system is a system of antigens located on this protein. The protein mediates cellular binding to particles and immune complexes that have activated complement. Decreases in expression of this protein and/or mutations in this gene have been associated with gallbladder carcinomas, mesangiocapillary glomerulonephritis, systemic lupus erythematosus, sarcoidosis and Alzheimer's disease. Mutations in this gene have also been associated with a reduction in Plasmodium falciparum rosetting, conferring protection against severe malaria. [provided by RefSeq, May 2020]

Product images:



Circular map for RC216533



HEK293T cells were transfected with the pCMV6-ENTRY control (Cat# [PS100001], Left lane) or pCMV6-ENTRY CR1 (Cat# RC216533, Right lane) cDNA for 48 hrs and lysed. Equivalent amounts of cell lysates (5 ug per lane) were separated by SDS-PAGE and immunoblotted with anti-CR1 (Cat# [TA811726])(1:2000).