

Product datasheet for **RC216529**

PIST (GOPC) (NM_020399) Human Tagged ORF Clone

Product data:

Product Type:	Expression Plasmids
Product Name:	PIST (GOPC) (NM_020399) Human Tagged ORF Clone
Tag:	Myc-DDK
Symbol:	PIST
Synonyms:	CAL; dj94G16.2; FIG; GOPC1; PIST
Mammalian Cell Selection:	Neomycin
Vector:	pCMV6-Entry (PS100001)
E. coli Selection:	Kanamycin (25 ug/mL)



[View online »](#)

ORF Nucleotide Sequence:

>RC216529 representing NM_020399
 Red=Cloning site Blue=ORF Green=Tags(s)

TTTTGTAATACGACTCACTATAGGGCGGCCGGGAATTCGTCGACTGGATCCGGTACCGAGGAGATCTGCC
 GCC**CGGATCGCC**

ATGTCGGCGGGCGGTCCATGCCAGCAGCAGCCGGAGGGGGCCAGGGGGCGCCTCTGCTCCGTGGGGG
 CCCTGGCGGGGTATCCATGTTCCGGTGGCTGGAGGTGCTGGAGAAGGAGTTCGACAAAGCTTTTGTGGA
 TGTGGATCTGCTCTGGGAGAGATCGATCCAGACCAAGCGGACATCACTTATGAGGGCGACAGAAGATG
 ACCAGCCTGAGCTCTGCTTTGCACAGCTTTGCCACAAAGCCAGTCTGTGTCTCAAATCAACCACAAGC
 TGGAGGCACAGTTGGTGGATCTGAAATCTGAAGTACAGAAACCAAGCAGAGAAAGTTGTTTTGGAGAA
 AGAAGTACATGATCAGCTTTTACAGCTGCACTCTATTAGCTGCACTTTCATGCTAAAAGTGGTCAAAGT
 GCTGACTCTGGTACCATTAAGGCAAAATGTCTGGCCCTCTGTGGAGGAGCTGGAAAGAGAGCTTGAGG
 CAAACAAAAAGAAAAATGAAAGAAGCACAATTGAAGCTGAAGTGAATTTGTTGAGAAAAGAGAAATGA
 AGCCCTTCGTAGACATATAGCTGTTCTCCAGGCTGAAGTATATGGGGCGAGACTAGCTGCCAAGTACTTG
 GATAAGGAACTGGCAGGAAGGGTCCAACAGATACAATTGCTAGGACGAGATATGAAGGGACTGCTCATG
 ATAAGCTTTGGAACCAATTAGAAGCTGAAATACATTTGCATCGTCACAAAAGTGTGATCCGAGCCTGCAG
 AGGACGTAATGACTTGAACGACCAATGCAAGCACCACCAGGCCATGATCAAGATTCCCTAAAGAAAAGC
 CAAGGTGTTGGTCCAATTAGAAAAGTCTCCTCCTTAAGGAAGATCATGAAGGCCTTGGCATTTC AATTA
 CAGGTGGGAAAGAATCGGTGTTCCAATCCTCATCTCTGAGATCCATCCGGGGCAACCTGCTGATAGATG
 CGGAGGGCTGCACGTTGGGGATGCTATTTTGGCAGTCAACGGAGTTAACCTAAGGGACACAAAGCATAAA
 GAAGCTGTAAC TATTCTTCTCAGCAGAGAGGAGAGATTGAATTTGAAGTAGTTTATGTGGCTCCTGAAG
 TGGATTCTGATGATGAAAACGTAGAGTATGAAGATGAGAGTGGACATCGTTACCGTTTGTACCTTGATGA
 GTTAGAAGGAGGTGGTAACCTGGTGTAGTTGCAAGACACAAGTGGGGAAATCAAAGTATTACAAGGA
 TTTAATAAGAAGGCAGTAACTGACACACATGAAAATGGAGACCTGGGCACTGCAAGTGAAGTCCGCTAG
 ATGACGGTCTTCAAATTAGATGATCTGCACACTCTGTATCATAAAAAATCTTAT

ACGCGTACGCGGCCGCTCGAGCAGAACTCATCTCAGAAGAGGATCTGGCAGCAAATGATATCCTGGATT
 ACAAGGATGACGACGATAAGGTTTAA

Protein Sequence:

>RC216529 representing NM_020399
 Red=Cloning site Green=Tags(s)

MSAGGPCPAAAGGGPGGASCSVGPVSMFRWLEVLEKEFDKAFVDVLLLLGEIDPDQADITYEGRQKM
 TSLSSCFACLCHKAQSVSQINHKLEAQLVDLKSELTETQAEKVVLEKEVHDQLQLHSIQLQLHAKTGQS
 ADSGTIKAKLSGSPSVEELERELEANKKEKMKEAQLEAEVKLLRKENEALRRHIAVLQAEVYGARLAAKYL
 DKELAGRVOQIQLLGRDMKGPADKLNQLEAEIHLHRHKTVIRACRGRNDLKRPMQAPPGHDQDSLKKS
 QGVGPIRKVLLKEDHEGLGISITGGKEHGVPII SEIHPGQPADRCGGLHVGDAI LAVNGVNL RDTKHK
 EAVTILSQQRGEIEFEVYVAPEVDSDDENVEYEDES GHRYRLYLDELEGGNPGASCKDTSGEIKVLQG
 FNKKA VTDTHENGDLGTASETPLDDGASKLDDLHTLYHKKS Y

TRTRPLEQKLISEEDLAANDILDYKDDDDKV

Chromatograms:

https://cdn.origene.com/chromatograms/mk6507_c04.zip

Restriction Sites:

Sgfl-Mlul

Cloning Scheme:

ACCN: NM_020399

ORF Size: 1386 bp

OTI Disclaimer: The molecular sequence of this clone aligns with the gene accession number as a point of reference only. However, individual transcript sequences of the same gene can differ through naturally occurring variations (e.g. polymorphisms), each with its own valid existence. This clone is substantially in agreement with the reference, but a complete review of all prevailing variants is recommended prior to use. [More info](#)
OTI Annotation: This clone was engineered to express the complete ORF with an expression tag. Expression varies depending on the nature of the gene.

Components: The ORF clone is ion-exchange column purified and shipped in a 2D barcoded Matrix tube containing 10ug of transfection-ready, dried plasmid DNA (reconstitute with 100 ul of water).

Reconstitution Method:

1. Centrifuge at 5,000xg for 5min.
2. Carefully open the tube and add 100ul of sterile water to dissolve the DNA.
3. Close the tube and incubate for 10 minutes at room temperature.
4. Briefly vortex the tube and then do a quick spin (less than 5000xg) to concentrate the liquid at the bottom.
5. Store the suspended plasmid at -20°C. The DNA is stable for at least one year from date of shipping when stored at -20°C.

RefSeq: [NM_020399.4](#)
RefSeq Size: 4604 bp

RefSeq ORF: 1389 bp

Locus ID: 57120

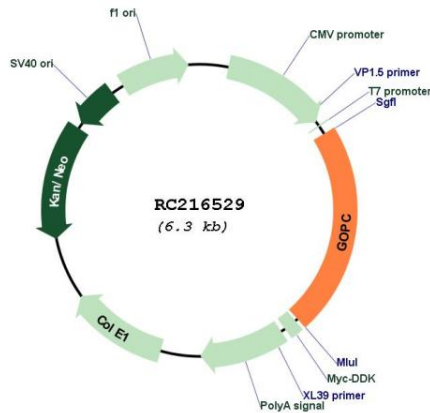
UniProt ID: [Q9HD26](#)
Cytogenetics: 6q22.1

Domains: PDZ

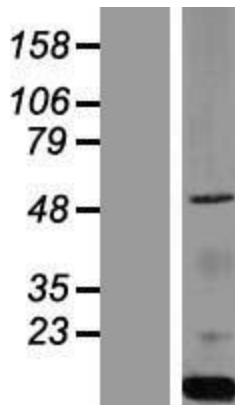
MW: 50.3 kDa

Gene Summary: This gene encodes a Golgi protein with a PDZ domain. The PDZ domain is globular and proteins which contain them bind other proteins through short motifs near the C-termini. Mice which are deficient in the orthologous protein have globozoospermia and are infertile. Multiple transcript variants encoding different isoforms have been found for this gene. [provided by RefSeq, Dec 2011]

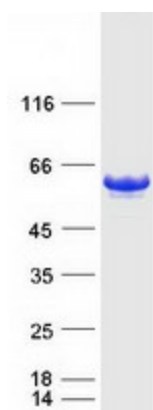
Product images:



Circular map for RC216529



Western blot validation of overexpression lysate (Cat# [LY412502]) using anti-DDK antibody (Cat# [TA50011-100]). Left: Cell lysates from untransfected HEK293T cells; Right: Cell lysates from HEK293T cells transfected with RC216529 using transfection reagent MegaTran 2.0 (Cat# [TT210002]).



Coomassie blue staining of purified GOPC protein (Cat# [TP316529]). The protein was produced from HEK293T cells transfected with GOPC cDNA clone (Cat# RC216529) using MegaTran 2.0 (Cat# [TT210002]).