

Product datasheet for **RC216528**

KCNIP4 (NM_147182) Human Tagged ORF Clone

Product data:

Product Type:	Expression Plasmids
Product Name:	KCNIP4 (NM_147182) Human Tagged ORF Clone
Tag:	Myc-DDK
Symbol:	KCNIP4
Synonyms:	CALP; KCHIP4
Mammalian Cell Selection:	Neomycin
Vector:	pCMV6-Entry (PS100001)
E. coli Selection:	Kanamycin (25 ug/mL)
ORF Nucleotide Sequence:	>RC216528 ORF sequence Red=Cloning site Blue=ORF Green=Tags(s)

TTTTGTAATACGACTCACTATAGGGCGGCCGGAATTCGTCGACTGGATCCGGTACCGAGGAGATCTGCC
GCC**CGATCGCC**

ATGAATGTGAGGAGGGTGGAAAGCATTTCGGCTCAGCTGGAGGAGGCCAGCTCTACAGGCGGTTTCCTGT
ACGCTCAGAACAGCACCAAGCGCAGCATTAAAGAGCGGCTCATGAAGCTTTGCCCTGCTCAGCTGCCAA
AACGTCGCTCCTGCTATTCAAACAGCGTGGAAGATGAACTGGAGATGGCCACCGTCAGGCATCGGCC
GAAGCCCTTGAGCTTCTGGAAGCCAGAGCAAATTTACCAAGAAAGAGCTTCAGATCCTTACAGAGGAT
TTAAGAACGAATGCCCCAGTGGTGTGTTAATGAAGAAACCTTCAAAGAGATTTACTCGCAGTTCCTTCC
ACAGGGAGACTCTACAACATATGCACATTTTCTGTTCAATGCATTTGATACAGACCAACAATGGAGCTGTG
AGTTTCGAGGATTTATCAAAGGTCTTTCCATTTTGTCCGGGGACAGTACAAGAAAACTCAATTGGG
CATTTAATCTGTATGACATAAATAAAGATGGCTACATCACTAAAGAGGAAATGCTTGATATAATGAAAGC
AATATACGATATGATGGGTAAATGTACATATCCTGTCTCAAAGAAGATGCTCCAGACAACACGTTGAA
ACATTTTTTCAGAAAATGGACAAAAATAAAGATGGGGTTGTTACCATAGATGAGTTCATTGAAAGCTGCC
AAAAAGATGAAAACATAATGCGCTCCATGCAGCTCTTTGAAAATGTGATT

ACGCGTACGCGGCCGCTCGAGCAGAACTCATCTCAGAAGAGGATCTGGCAGCAAATGATATCCTGGATT
ACAAGGATGACGACGATAAGGTTTAA



[View online »](#)

Protein Sequence: >RC216528 protein sequence
 Red=Cloning site Green=Tags(s)

MNVRVESISAQLEEASSTGGFLYAQNSTKRSIKERLMKLLPCSAAKTSSPAIQNSVEDELEMATVRHRP
 EALELLEAQSKFTKKELQILYRFGKNECPSGVVNEETFKEIYSQFFPQGDSTTYAHFLFNAFDTDHNGAV
 SFEDFIKGLSILLRGTVQEKLNWAFNLIDINKDGYITKEEMLDIMKAIYDMMGKCTYPVLKEDAPRQHV
 TFFQKMDKNKDGVVITIDEFIESCQKDENIMRSMQLFENVI

TRTRPLEQKLISEEDLAANDILDYKDDDDKV

Chromatograms: https://cdn.origene.com/chromatograms/mk6337_a11.zip

Restriction Sites: SgfI-MluI

Cloning Scheme:

Cloning sites used for ORF Shuttling:



* The last codon before the Stop codon of the ORF

ACCN: NM_147182

ORF Size: 753 bp

OTI Disclaimer: The molecular sequence of this clone aligns with the gene accession number as a point of reference only. However, individual transcript sequences of the same gene can differ through naturally occurring variations (e.g. polymorphisms), each with its own valid existence. This clone is substantially in agreement with the reference, but a complete review of all prevailing variants is recommended prior to use. [More info](#)

OTI Annotation: This clone was engineered to express the complete ORF with an expression tag. Expression varies depending on the nature of the gene.

Components: The ORF clone is ion-exchange column purified and shipped in a 2D barcoded Matrix tube containing 10ug of transfection-ready, dried plasmid DNA (reconstitute with 100 ul of water).

Reconstitution Method:

1. Centrifuge at 5,000xg for 5min.
2. Carefully open the tube and add 100ul of sterile water to dissolve the DNA.
3. Close the tube and incubate for 10 minutes at room temperature.
4. Briefly vortex the tube and then do a quick spin (less than 5000xg) to concentrate the liquid at the bottom.
5. Store the suspended plasmid at -20°C. The DNA is stable for at least one year from date of shipping when stored at -20°C.

RefSeq Size: 2371 bp

RefSeq ORF: 567 bp

Locus ID: 80333

UniProt ID: [Q6PIL6](#)

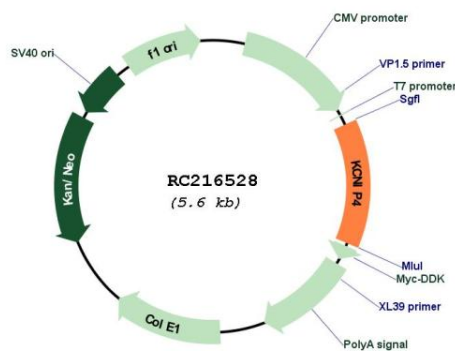
Cytogenetics: 4p15.31-p15.2

Protein Families: Druggable Genome, Ion Channels: Other

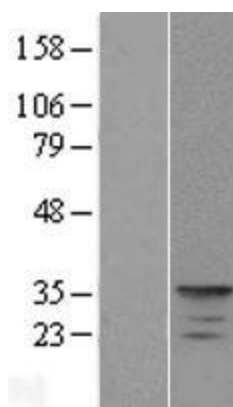
MW: 28.7 kDa

Gene Summary: This gene encodes a member of the family of voltage-gated potassium (Kv) channel-interacting proteins (KCNIPs), which belong to the recoverin branch of the EF-hand superfamily. Members of the KCNIP family are small calcium binding proteins. They all have EF-hand-like domains, and differ from each other in the N-terminus. They are integral subunit components of native Kv4 channel complexes. They may regulate A-type currents, and hence neuronal excitability, in response to changes in intracellular calcium. This protein member also interacts with presenilin. Multiple alternatively spliced transcript variants encoding distinct isoforms have been identified for this gene. [provided by RefSeq, Jul 2008]

Product images:



Circular map for RC216528



Western blot validation of overexpression lysate (Cat# [LY407777]) using anti-DDK antibody (Cat# [TA50011-100]). Left: Cell lysates from untransfected HEK293T cells; Right: Cell lysates from HEK293T cells transfected with RC216528 using transfection reagent MegaTran 2.0 (Cat# [TT210002]).