

## Product datasheet for **RC216523**

### CCDC50 (NM\_178335) Human Tagged ORF Clone

#### Product data:

Product Type:	Expression Plasmids
Product Name:	CCDC50 (NM_178335) Human Tagged ORF Clone
Tag:	Myc-DDK
Symbol:	CCDC50
Synonyms:	C3orf6; DFNA44; YMER
Mammalian Cell Selection:	Neomycin
Vector:	pCMV6-Entry (PS100001)
E. coli Selection:	Kanamycin (25 ug/mL)



[View online »](#)

**ORF Nucleotide Sequence:**

>RC216523 representing NM\_178335  
 Red=Cloning site Blue=ORF Green=Tags(s)

TTTTGTAATACGACTCACTATAGGGCGGCCGGAATTCGTCGACTGGATCCGGTACCGAGGAGATCTGCC  
 GCC**GCGATCGCC**

ATGGCTGAAGTCAGCATCGACCAGTCCAAGCTGCCTGGAGTCAAGGAAGTATGCCGAGATTTTGGCTGTCC  
 TGGAGGACCACACCTGGCTCACAGCCTGCAGGAACAAGAGATTGAGCATTATTTGGCATCGAACGTTCA  
 GCGGAACCGTTTTGGTCCAGCATGATCTCCAGTGGCTAAGCAGCTCCAAGAGGAAGATCTGAAAGCGCAG  
 GCCCAGCTCCAGAAGCGCTACAAAGACCTTGAACAACAAGACTGTGAAATTGCTCAGGAAATTCAGGAGA  
 AGCTGGCTATTGAGGCAGAGAGACGACGCATTCAGGAGAAGAAGGATGAGGACATAGCTCGCCTTTTGA  
 AGAAAAGGAGTTACAGGAAGAGAAAAAGAGAAAGAAACACTTTCCAGAGTTCCTGCAACCCGTGCTTAT  
 GCAGATAGTTACTATTATGAAGATGGAGACCAACCAGGGTCAAGGAGGGCCAGGGAATTTGGTTCTGGAT  
 TCTCAAGACCTTTAGACTCCAAAGAGATGAAAGACTGTGAAGCACAAGAAAGAGAAAACAGAACATCC  
 ACTGGAGAACTTGAAGAGCCAGAACAACATTGTTTCATCGAAGAGATCCCTGTCATCCTCTAGCTCGGGC  
 AAAGGGAGGGACAATCCCATATTAACAATGAGCAGCATGAAAGGAAACGGTCCACTCAGGAGAGGGCTC  
 GGAGACCTCTGCTTCCCACGATCAGTGGTGAAGTGTCTTGAGCACTGAATGTGATGACTGGGAGACTAA  
 GATTAACCATCAGACTCGAAATTTGGAAAAACAGTCTCGACACCAAGATCGACTTTCACCCAAGTCTCA  
 CAAAAAGCAGGGCTTCACTGCAAGGAAGTTGTATATGGGAGGGACCATGGGCAAGGTGAGCACAGAAAA  
 GGAGACACAGGCCAGGACTCCTCCATTCTCAGAGAGTGAAGGAGCAGCTCCACCTCCATGACGCAGGAAT  
 GAAGCCAAGAGTGATGAAAGAAGCTGTATCTACTCCATCAGCAATGGCCACAGGGATCAGGAATGGTAT  
 GATGCTGAAATTGCCAGAAAACGTCGACTTCTAATGGCTGAAGAAAAGAAAGCTTACAAAAAGCCAA  
 GGAGCGGGAGAAATCATCTTTGGACAAAAGCAAGACCCCGAGTGGAAAGCCAAAAACAGCTAAAGCA  
 GCAAAATCCAAGTCAAAAGAGAGTGATGAACCTACCATTCTAAGAATGAAAGGCCAGCAGCGCCACCAC  
 CACCTATCATGACAGATGGTGAAGATGCGGATTACACTCATTTTACAACCAGCAGAGTTCCACACGGCA  
 TTTCTCAAAATCAGAGTCTCTCATAAAGGTTTTTCATTACAAACAT

**ACGCGT**ACGCGGCCGCTCGAGCAGAAACTCATCTCAGAAGAGGATCTGGCAGCAATGATATCCTGGATT  
 ACAAGGATGACGACGATAAGGTTTAA

**Protein Sequence:**

>RC216523 representing NM\_178335  
 Red=Cloning site Green=Tags(s)

MAEVSIDQSKLPGVKEVCRDFAVLEDHTLAHSLQEQEIEHHLASNVQRNRLVQHDLQVAKQLQEEDLKAQ  
 AQLQKRYKDLEQQDCEIAQEIQEKLAIEAERRRIQEKKDEDIARLLQEKELQEEKRKKHFPEFPATRAY  
 ADSYYYEDGDQPGSRRARELGSFGSRPCRLQRDGKTVKHKKEKPEHLENLEEPEQHCSKRSLSSSSG  
 KGRDNPINNEQHERKRSTQERPRRPLPTISGEVFLSTECDDWETKINHQTRNWEKQSRHQDRLSPKSS  
 QKAGLHCKEVVYGRDHGQGEHRKRRHRPRTPPFSESEEQLHLHDAGMKPRVMKEAVSTPSRMAHRDQEWY  
 DAEIARKLQEEELLATQVDMRAAQVAQDEE IARLLMAEEKKAYKKAKEREKSSLDKRKQDPEWPKTAKA  
 ANSKSKESDEPHHSKNERPARPPPPIMTDGEDADYTHFTNQSSSTRHFSKSESSHKGFFHYKH

**TR**TRPLEQKLISEEDLAANDILDYKDDDDKV

**Chromatograms:**

[https://cdn.origene.com/chromatograms/mk8062\\_g10.zip](https://cdn.origene.com/chromatograms/mk8062_g10.zip)

**Restriction Sites:**

Sgfl-Mlul

**Cloning Scheme:**


**ACCN:** NM\_178335

**ORF Size:** 1446 bp

**OTI Disclaimer:** The molecular sequence of this clone aligns with the gene accession number as a point of reference only. However, individual transcript sequences of the same gene can differ through naturally occurring variations (e.g. polymorphisms), each with its own valid existence. This clone is substantially in agreement with the reference, but a complete review of all prevailing variants is recommended prior to use. [More info](#)

**OTI Annotation:** This clone was engineered to express the complete ORF with an expression tag. Expression varies depending on the nature of the gene.

**Components:** The ORF clone is ion-exchange column purified and shipped in a 2D barcoded Matrix tube containing 10ug of transfection-ready, dried plasmid DNA (reconstitute with 100 ul of water).

- Reconstitution Method:**
1. Centrifuge at 5,000xg for 5min.
  2. Carefully open the tube and add 100ul of sterile water to dissolve the DNA.
  3. Close the tube and incubate for 10 minutes at room temperature.
  4. Briefly vortex the tube and then do a quick spin (less than 5000xg) to concentrate the liquid at the bottom.
  5. Store the suspended plasmid at -20°C. The DNA is stable for at least one year from date of shipping when stored at -20°C.

**Note:** Plasmids are not sterile. For experiments where strict sterility is required, filtration with 0.22um filter is required.

**RefSeq:** [NM\\_178335.3](#)

**RefSeq Size:** 2454 bp

**RefSeq ORF:** 1449 bp

**Locus ID:** 152137

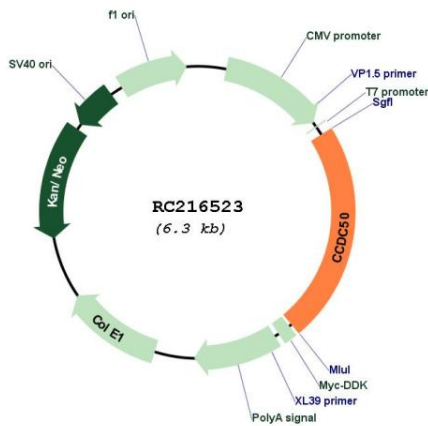
UniProt ID: [Q8IVM0](#)

Cytogenetics: 3q28

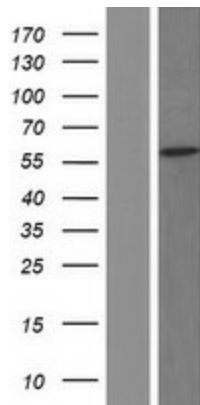
MW: 56.2 kDa

**Gene Summary:** This gene encodes a soluble, cytoplasmic, tyrosine-phosphorylated protein with multiple ubiquitin-interacting domains. Mutations in this gene cause nonsyndromic, postlingual, progressive sensorineural DFNA44 hearing loss. In mouse, the protein is expressed in the inner ear during development and postnatal maturation and associates with microtubule-based structures. This protein may also function as a negative regulator of NF- $\kappa$ B signaling and as an effector of epidermal growth factor (EGF)-mediated cell signaling. Alternative splicing results in multiple transcript variants encoding distinct isoforms. [provided by RefSeq, Oct 2008]

**Product images:**



Circular map for RC216523



Western blot validation of overexpression lysate (Cat# [LY405969]) using anti-DDK antibody (Cat# [TA50011-100]). Left: Cell lysates from untransfected HEK293T cells; Right: Cell lysates from HEK293T cells transfected with RC216523 using transfection reagent MegaTran 2.0 (Cat# [TT210002]).