

Product datasheet for RC216510

IDNK (NM_001001551) Human Tagged ORF Clone

Product data:

Product Type: Expression Plasmids
Product Name: IDNK (NM_001001551) Human Tagged ORF Clone
Tag: Myc-DDK
Symbol: IDNK
Synonyms: bA522I20.2; C9orf103; hGntK
Mammalian Cell Selection: Neomycin
Vector: pCMV6-Entry (PS100001)
E. coli Selection: Kanamycin (25 ug/mL)
ORF Nucleotide Sequence: >RC216510 representing NM_001001551
 Red=Cloning site Blue=ORF Green=Tags(s)

TTTTGTAATACGACTCACTATAGGGCGGCCGGAATTCGTCGACTGGATCCGGTACCGAGGAGATCTGCC
 GCC**CGATCGCC**

ATGGCGGCGCGGGCGCGCTGCTGGTATGGGCGTGAGCGGCTCGGGAAATCCACCGTGGGCGCCCTGC
 TGGCATCTGAGCTGGATGGAAATCTATGATGCTGATGATTATCACCCGAGGAAAATCGAAGGAAGAT
 GGGAAAAGGCATACCGCTCAATGACCAGGACCGGATCCATGGCTCTGTAACCTGCATGACATTTACTA
 AGAGATGTAGCCTCGGGACAGCGTGTGGTCTAGCCTGTTAGCCCTGAAGAAAACGTACAGAGACATAT
 TAACACAAGGAAAAGATGGTGTAGCTCTGAAGTGTGAGGAGTCGGGAAAGGAAGCAAAGCAGGCTGAGAT
 GCAGCTCCTGGTGGTCCATCTGAGCGGGTCGTTTGGAGTCTCTGGACGCTTACTCAAAAGAGAGGGGA
 CATTTTATGCCCCCTGAATTATTGCAGTCCCAGTTTGGAGCTCTGGAGCCCCAGCAGCTCCAGAAAAC
 TTATCAAATAAGTGTGGACAAAATGTTTCAGAGATAATTGCTACAATTATGAAAACCTAAAAATGAA
 A

ACGCGTACGCGGCCGCTCGAGCAGAACTCATCTCAGAAGAGGATCTGGCAGCAATGATATCCTGGATT
 ACAAGGATGACGACGATAAGGTTTAA

Protein Sequence: >RC216510 representing NM_001001551
 Red=Cloning site Green=Tags(s)

MAAPGALLVMGVSGSGKSTVGALLASELGWKFYDADDYHPEENRRKMGKGIPLNDQDRIPWLCNLHDILL
 RDVASGQRVVLACSALKKTYRDILTQKDGVALKCEESGKEAKQAEMQLLVVHLSGSFEVISGRLLKREG
 HFMPPELLQSQFETLEPPAAPENFIQISVDKNVSEIIATIMETLKMK

TRTRPLEQKLISEEDLAANDILDYKDDDDKV



[View online »](#)

Chromatograms: https://cdn.origene.com/chromatograms/mk8102_b12.zip

Restriction Sites: SgfI-MluI

Cloning Scheme:



ACCN: NM_001001551

ORF Size: 561 bp

OTI Disclaimer: The molecular sequence of this clone aligns with the gene accession number as a point of reference only. However, individual transcript sequences of the same gene can differ through naturally occurring variations (e.g. polymorphisms), each with its own valid existence. This clone is substantially in agreement with the reference, but a complete review of all prevailing variants is recommended prior to use. [More info](#)

OTI Annotation: This clone was engineered to express the complete ORF with an expression tag. Expression varies depending on the nature of the gene.

Components: The ORF clone is ion-exchange column purified and shipped in a 2D barcoded Matrix tube containing 10ug of transfection-ready, dried plasmid DNA (reconstitute with 100 ul of water).

Reconstitution Method:

1. Centrifuge at 5,000xg for 5min.
2. Carefully open the tube and add 100ul of sterile water to dissolve the DNA.
3. Close the tube and incubate for 10 minutes at room temperature.
4. Briefly vortex the tube and then do a quick spin (less than 5000xg) to concentrate the liquid at the bottom.
5. Store the suspended plasmid at -20°C. The DNA is stable for at least one year from date of shipping when stored at -20°C.

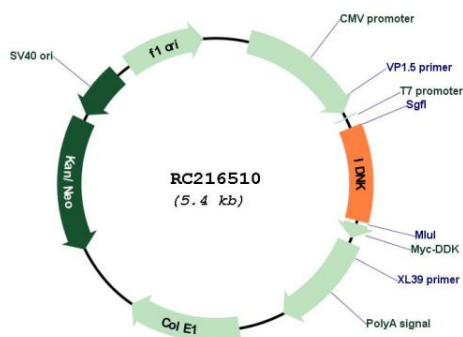
RefSeq: [NM_001001551.4](#)

RefSeq Size: 1058 bp

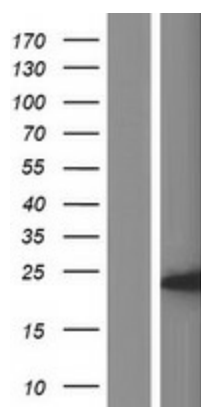
RefSeq ORF: 564 bp

Locus ID: 414328

UniProt ID: [Q5T6J7](#)
 Cytogenetics: 9q21.32
 MW: 20.6 kDa

Product images:


Circular map for RC216510



Western blot validation of overexpression lysate (Cat# [LY424376]) using anti-DDK antibody (Cat# [TA50011-100]). Left: Cell lysates from untransfected HEK293T cells; Right: Cell lysates from HEK293T cells transfected with RC216510 using transfection reagent MegaTran 2.0 (Cat# [TT210002]).